



Chipsmall Limited consists of a professional team with an average of over 10 year of expertise in the distribution of electronic components. Based in Hongkong, we have already established firm and mutual-benefit business relationships with customers from,Europe,America and south Asia,supplying obsolete and hard-to-find components to meet their specific needs.

With the principle of “Quality Parts,Customers Priority,Honest Operation,and Considerate Service”,our business mainly focus on the distribution of electronic components. Line cards we deal with include Microchip,ALPS,ROHM,Xilinx,Pulse,ON,Everlight and Freescale. Main products comprise IC,Modules,Potentiometer,IC Socket,Relay,Connector.Our parts cover such applications as commercial,industrial, and automotives areas.

We are looking forward to setting up business relationship with you and hope to provide you with the best service and solution. Let us make a better world for our industry!



## Contact us

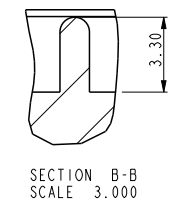
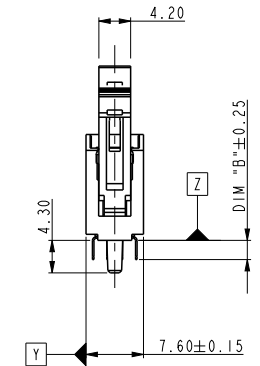
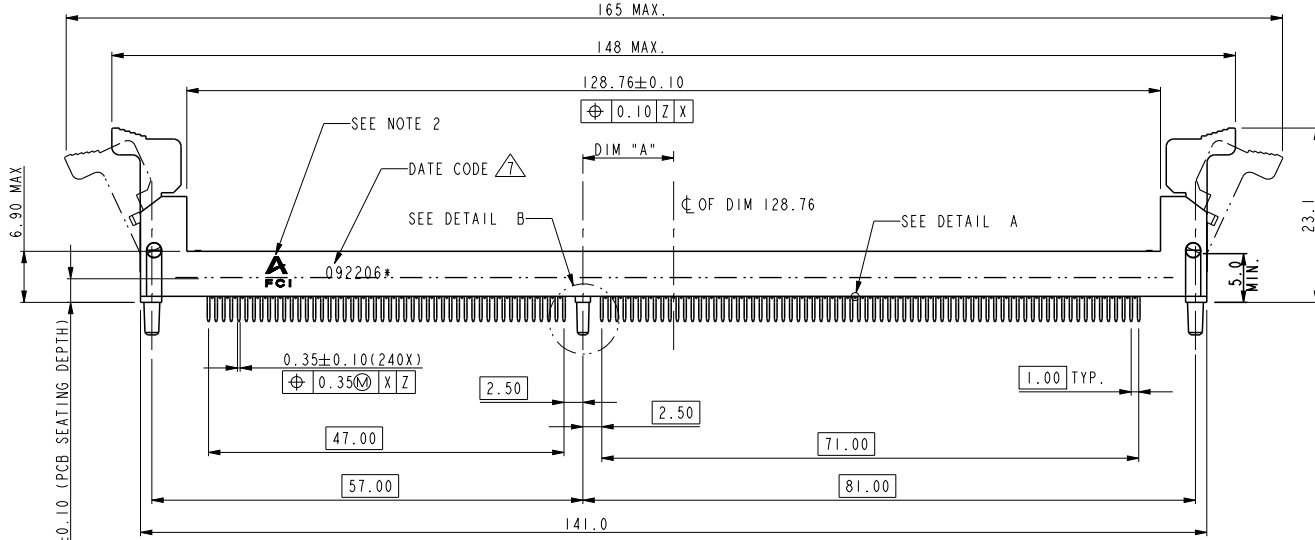
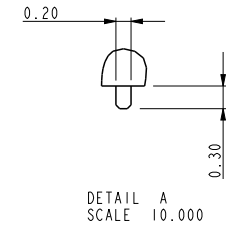
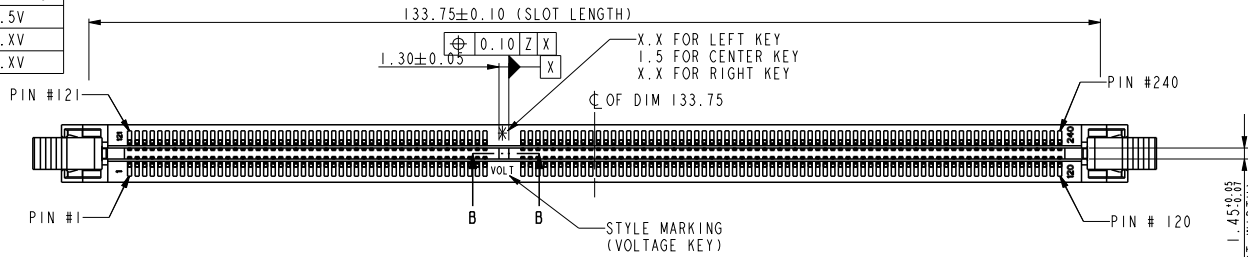
Tel: +86-755-8981 8866 Fax: +86-755-8427 6832

Email & Skype: info@chipsmall.com Web: www.chipsmall.com

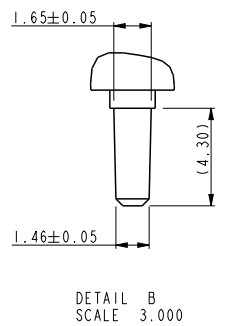
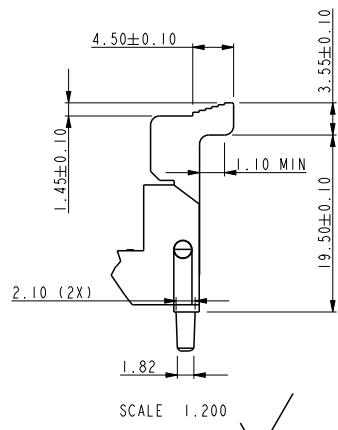
Address: A1208, Overseas Decoration Building, #122 Zhenhua RD., Futian, Shenzhen, China



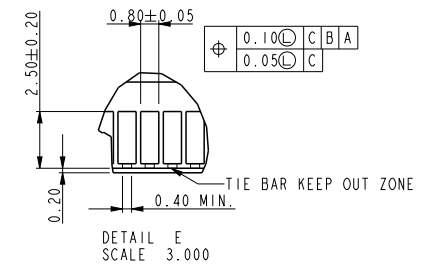
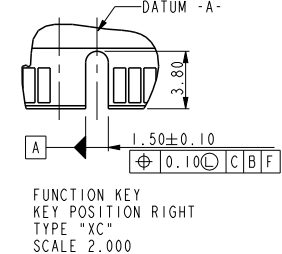
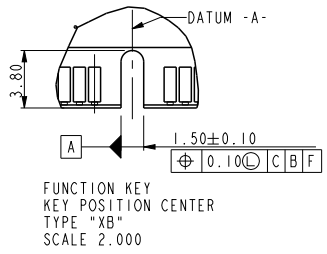
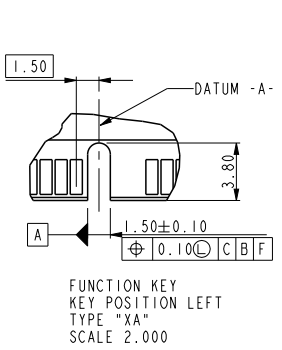
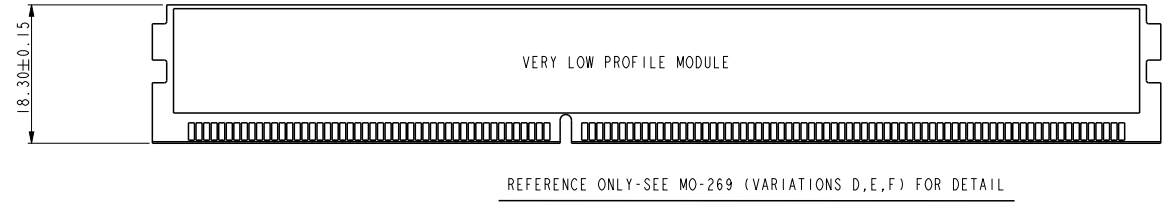
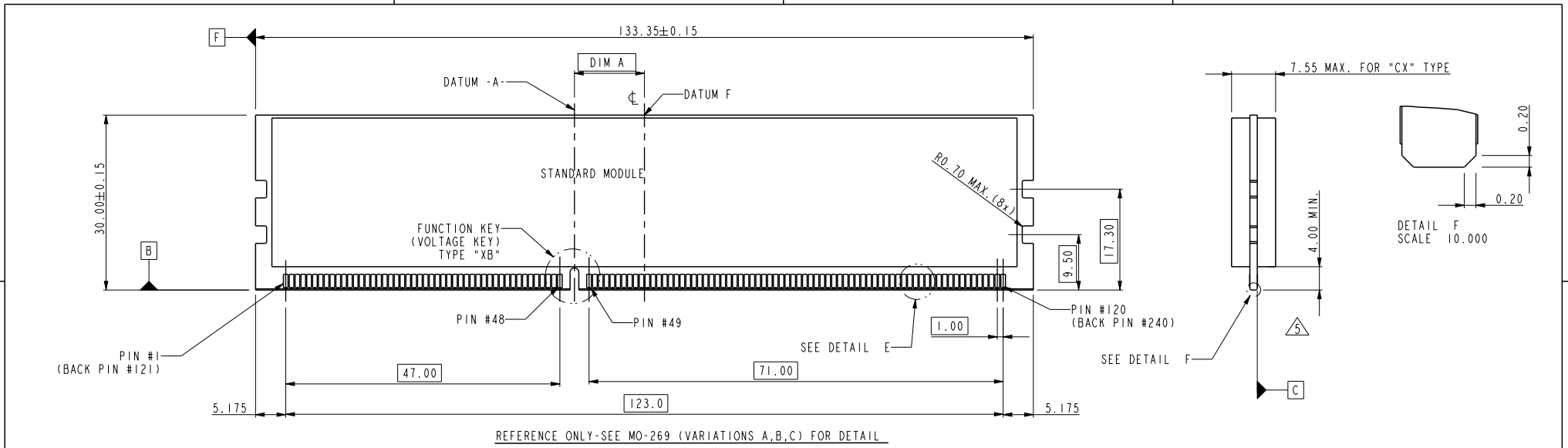
| PART NO.       | DIM "A" | DESCRIPTION |
|----------------|---------|-------------|
| 10081531-1**** | 12.00   | 1.5V        |
| 10081531-2**** | 11.00   | X.XV        |
| 10081531-3**** | 13.00   | X.XV        |



| tolerance unless otherwise specified |            |
|--------------------------------------|------------|
| linear                               | .X ± .38   |
|                                      | .XX ± .25  |
|                                      | .XXX ± .13 |
| angles                               | 0° ± 2°    |



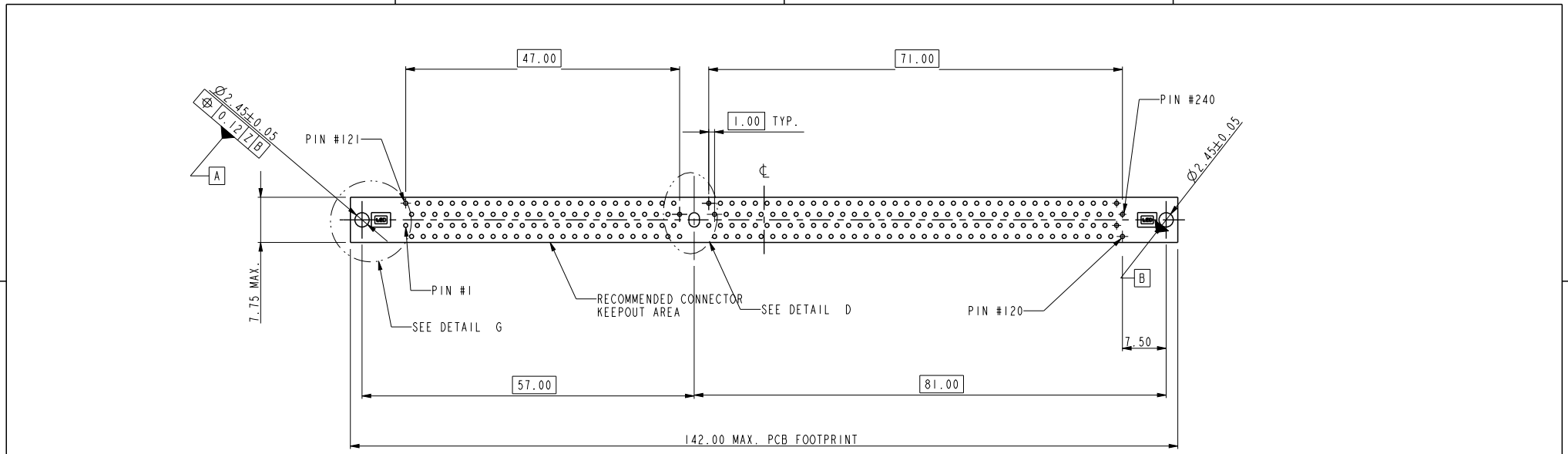
|              |            |            |                |        |                       |                |       |                        |   |              |
|--------------|------------|------------|----------------|--------|-----------------------|----------------|-------|------------------------|---|--------------|
| dr           | Rick Bian  | 2010/07/03 | projection<br> | MM<br> | size                  | A4             | scale | 0.500                  |   |              |
| eng          | Jeny Ren   | 2018/04/28 |                |        | ecn no                | ELX-DG-29895-1 |       |                        |   |              |
| chr          | -          | -          |                |        | rel level             | Released       |       |                        |   |              |
| appr         | Nickor Zuo | 2018/05/07 | product family | -      | dwg no                | 10081531       |       | rev                    | E |              |
| Amphenol FCI |            | title      |                |        | DDR3 R-DIMM CONNECTOR |                |       | cat. no.               |   | -            |
|              |            | title      |                |        | PEG TYPE              |                |       | Product - Customer Drw |   | sheet 1 of 4 |



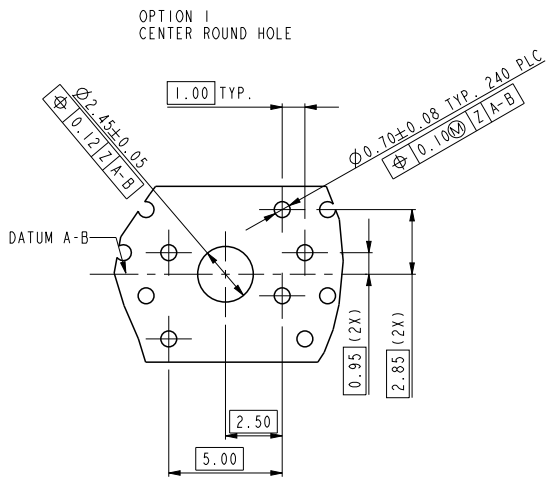
|                                      |                                     |
|--------------------------------------|-------------------------------------|
| tolerance unless otherwise specified |                                     |
| linear                               | .X ± .38<br>.XX ± .25<br>.XXX ± .13 |
| angles                               | 0° ± 2'                             |

|          |            |            |                        |    |                       |              |       |       |
|----------|------------|------------|------------------------|----|-----------------------|--------------|-------|-------|
| dr       | Rick Bian  | 2010/07/03 | projection             | MM | size                  | A4           | scale | 0.500 |
| eng      | Jeny Ren   | 2018/04/28 |                        |    | ecn no ELX-DG-29895-1 |              |       |       |
| chr      | -          | -          |                        |    | rel level Released    |              |       |       |
| appr     | Nickor Zuo | 2018/05/07 | product family         |    |                       | rev E        |       |       |
|          |            |            | title                  |    |                       | dwg no       |       | rev   |
|          |            |            | DDR3 R-DIMM CONNECTOR  |    |                       | 10081531     |       | E     |
|          |            |            | PEG TYPE               |    |                       |              |       |       |
| cat. no. |            |            | Product - Customer Drw |    |                       | sheet 2 of 4 |       |       |

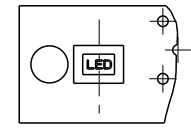
|                |             |
|----------------|-------------|
| TYPE "XA"      | X.X VOLTAGE |
| TYPE "XC"      | X.X VOLTAGE |
| TYPE "XB"      | 1.5 VOLTAGE |
| SUB KEY POS #I | DESCRIPTION |



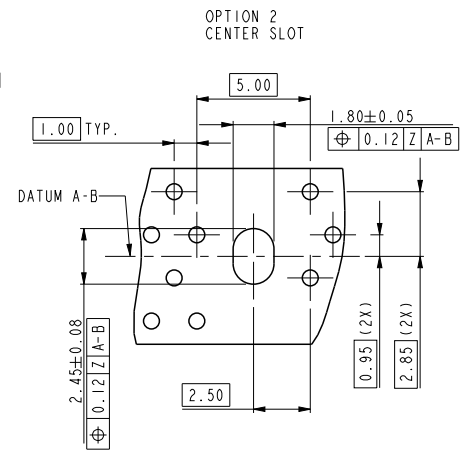
RECOMMENDED CIRCUIT BOARD HOLE LAYOUT



OPTION 1  
CENTER ROUND HOLE



DETAIL G  
SCALE 2.000



OPTION 2  
CENTER SLOT

DETAIL D  
SCALE 3.000

|                         |            |            |                |        |                        |                |              |       |
|-------------------------|------------|------------|----------------|--------|------------------------|----------------|--------------|-------|
| dr                      | Rick Bian  | 2010/07/03 | projection<br> | MM<br> | size                   | A4             | scale        | 0.500 |
| eng                     | Jeny Ren   | 2018/04/28 |                |        | ecn no                 | ELX-DG-29895-1 |              |       |
| chr                     | -          | -          |                |        | rel level              | Released       |              |       |
| appr                    | Nickor Zuo | 2018/05/07 | product family |        | rev                    |                | 10081531     |       |
| <b>Amphenol<br/>FCi</b> |            | title      |                |        | DDR3 R-DIMM CONNECTOR  |                | dwg no       |       |
|                         |            | title      |                |        | PEG TYPE               |                | rev          |       |
|                         |            | cat. no.   |                |        | Product - Customer Drw |                | sheet 3 of 4 |       |



10081531 - □ □ □ □

STYLE : MECHANICAL KEYING

- 1 : 1.5 VOLT. W/ CENTER KEY "XB"
- 2 : X.X VOLT. W/ LEFT KEY "XA"
- 3 : X.X VOLT. W/ RIGHT KEY "XC"

PLASTIC PEG LENTH

1 : 4.30

TAIL LENGTH

| CODE | DIM "B" |
|------|---------|
| 1    | 2.67    |
| 2    | 3.18    |

PLATING

| CODE | CONTACT                    | SOLDERTAIL                      | UNDERPLATE                              |
|------|----------------------------|---------------------------------|---|
| 2    | 15u" (0.38um)<br>MIN. GOLD | 100u" (2.54um)<br>MIN. TIN/LEAD | 50u" (1.27um)<br>MIN. NICKEL<br>OVERALL |
| 3    | 30u" (0.76um)<br>MIN. GOLD |                                 |   |
| 4    | 3u" (0.07um)<br>MIN. GOLD  | 100u" (2.54um)<br>MIN. 100% TIN | 50u" (1.27um)<br>MIN. NICKEL<br>OVERALL |
| 7LF  | 15u" (0.38um)<br>MIN. GOLD |                                 |   |
| 8LF  | 30u" (0.76um)<br>MIN. GOLD |                                 |   |
| 9LF  | 3u" (0.07um)<br>MIN. GOLD  |                                 |   |

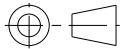
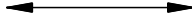
COLOR OF HOUSING AND EJECTOR

- 0 : BLACK HOUSING + IVORY EJECTOR
- 1 : BLUE HOUSING + IVORY EJECTOR
- 2 : BLACK HOUSING + BLACK EJECTOR
- 3 : BLACK HOUSING + CLEAR EJECTOR
- 4 : BLUE HOUSING + CLEAR EJECTOR
- 5 : IVORY HOUSING + CLEAR EJECTOR
- 6 : BLACK HOUSING + BLUE EJECTOR
- 7 : IVORY HOUSING + IVORY EJECTOR
- 9 : IVORY HOUSING + BLACK EJECTOR

NOTES:

1. MATERIAL:  
HOUSING: HIGH PERFORMANCE RESINS, GLASS FILLED UL94V-0 RATED.  
EJECTOR: HIGH PERFORMANCE RESINS, GLASS FILLED UL94V-0 RATED.  
TERMINAL: COPPER ALLOY.  
METAL CLIP: COPPER ALLOY.
2. FCI LOGO TO BE APPROXIMATELY LOCATED AS SHOWN ON PRINT.
3. PRODUCT SPECIFICATION: GS-12-486.
4. PACKAGING SPECIFICATION: GS-14-899.
5. CARD THICKNESS APPLIES ACROSS TABS AND INCLUDES PLATING AND/OR METALIZATION.
6. LEADING EDGE OF CONTACT PADS SPECIFIED BY THE KEEP OUT ZONE SHALL BE FREE OF BURRS AND EXTERNAL TIE BARS. FOR OPTIMUM PERFORMANCE. THE TIE BAR IS TO BE ON AN INTERNAL LAYER SO THAT THE REMNANT CANNOT CAUSE CONTACT DAMAGE.
7. THE DATE CODE IS SHOWN "MMDDYY\*"."\*" MEANS PRODUCTION LINE CODE.
8. SOCKET IS COMPLIANT TO JEDEC SO-007 AND ACCEPTS JEDEC MODULE MO-269, VARIATIONS AA THRU FC.
9. THIS PRODUCT MEETS EUROPEAN UNION DIRECTIVES AND OTHER COUNTRY REGULATIONS AS DESCRIBED IN GS-22-008.
10. THE HOUSING WILL WITH STAND EXPOSURE TO 260°C PEAK TEMPERATURE FOR 10 SECONDS IN A WAVE SOLDER APPLICATION.
11. THE CLEAR LATCH CAN WITHSTAND MAX 174°C EXPOSURE TEMPERATUER.



|      |            |            |   |   |                        |                       |          |              |
|------|------------|------------|---|---|------------------------|-----------------------|----------|--------------|
| dr   | Rick Bian  | 2010/07/03 | projection<br> | MM<br> | size                   | A4                    | scale    | 0.500        |
| eng  | Jeny Ren   | 2018/04/28 |   |   | ecn no                 | ELX-DG-29895-1        |          |              |
| chr  | -          | -          |   |   | product family         | rel level             | Released |              |
| appr | Nickor Zuo | 2018/05/07 | Amphenol FCI  |   | part no                | DDR3 R-DIMM CONNECTOR |          | rev          |
|      |            |            | PEG TYPE  |   | dwg no                 | 10081531              |          | E            |
|      |            |            | cat. no.  | *   | Product - Customer Drw |                       |          | sheet 4 of 4 |