



Chipsmall Limited consists of a professional team with an average of over 10 year of expertise in the distribution of electronic components. Based in Hongkong, we have already established firm and mutual-benefit business relationships with customers from,Europe,America and south Asia,supplying obsolete and hard-to-find components to meet their specific needs.

With the principle of “Quality Parts,Customers Priority,Honest Operation,and Considerate Service”,our business mainly focus on the distribution of electronic components. Line cards we deal with include Microchip,ALPS,ROHM,Xilinx,Pulse,ON,Everlight and Freescale. Main products comprise IC,Modules,Potentiometer,IC Socket,Relay,Connector.Our parts cover such applications as commercial,industrial, and automotives areas.

We are looking forward to setting up business relationship with you and hope to provide you with the best service and solution. Let us make a better world for our industry!



Contact us

Tel: +86-755-8981 8866 Fax: +86-755-8427 6832

Email & Skype: info@chipsmall.com Web: www.chipsmall.com

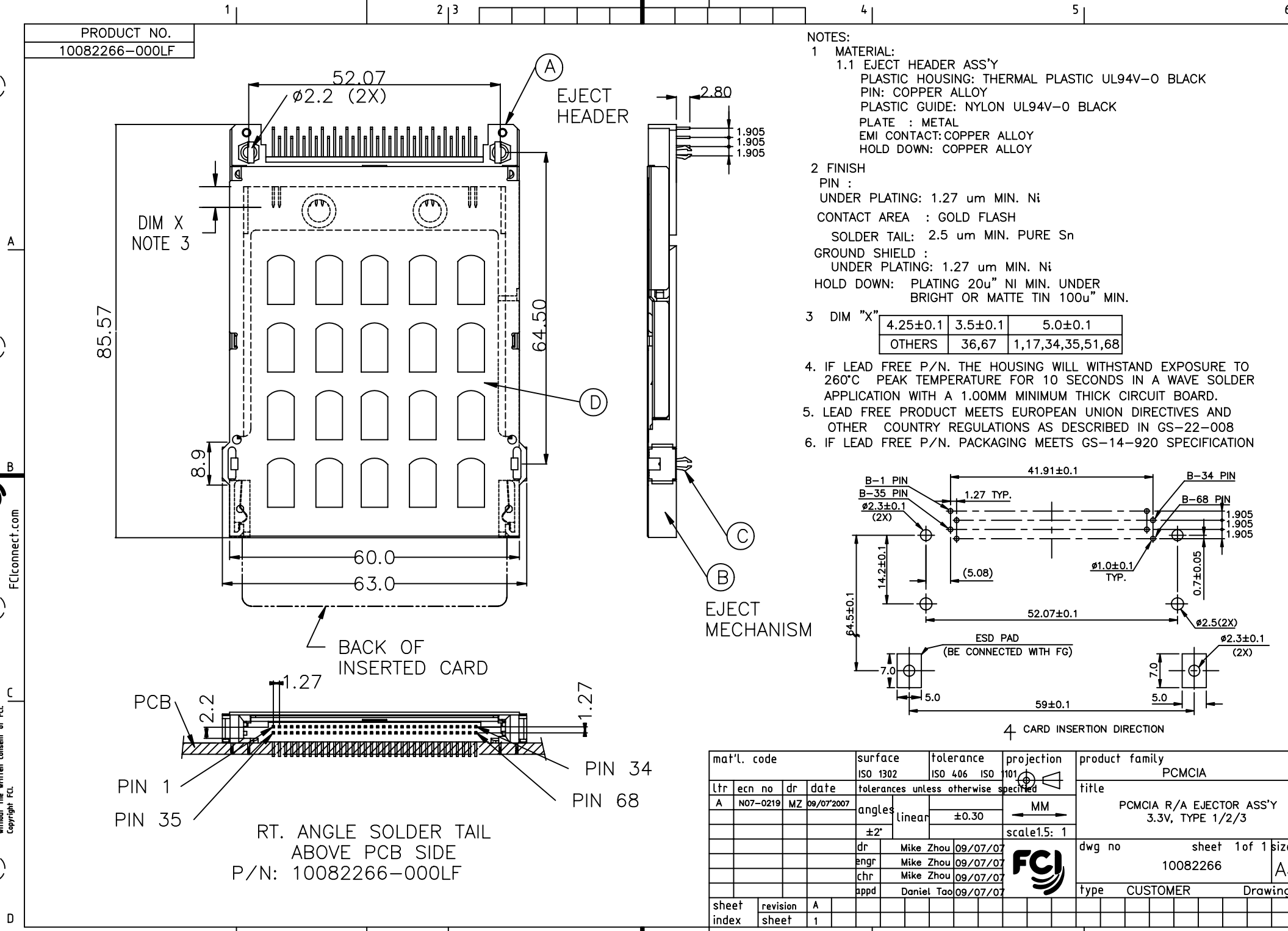
Address: A1208, Overseas Decoration Building, #122 Zhenhua RD., Futian, Shenzhen, China



FCI CONFIDENTIAL



This document is the property of and embodies CONFIDENTIAL and PROPRIETARY information of FCI. No part of the information shown on this document may be used in any way or disclosed to others without the written consent of FCI. Copyright FCI.



mat'l. code		surface	tolerance	projection	product family
		ISO 1302	ISO 406 ISO 101		PCMCIA
ltr		ecn no	dr	date	tolerances unless otherwise specified
A		N07-0219	MZ	09/07/2007	title
		angles	linear	±0.30	PCMCIA R/A EJECTOR ASS'Y 3.3V, TYPE 1/2/3
		±2'		MM	scale 15: 1
		dr	Mike Zhou	09/07/07	
		enr	Mike Zhou	09/07/07	
		chr	Mike Zhou	09/07/07	
		appd	Daniel Tao	09/07/07	
sheet	revision	A			
index	sheet	1			
		dwg no	sheet 1 of 1 size		
		10082266		A4	
		type	CUSTOMER	Drawing	