



Chipsmall Limited consists of a professional team with an average of over 10 year of expertise in the distribution of electronic components. Based in Hongkong, we have already established firm and mutual-benefit business relationships with customers from,Europe,America and south Asia,supplying obsolete and hard-to-find components to meet their specific needs.

With the principle of “Quality Parts,Customers Priority,Honest Operation,and Considerate Service”,our business mainly focus on the distribution of electronic components. Line cards we deal with include Microchip,ALPS,ROHM,Xilinx,Pulse,ON,Everlight and Freescale. Main products comprise IC,Modules,Potentiometer,IC Socket,Relay,Connector.Our parts cover such applications as commercial,industrial, and automotives areas.

We are looking forward to setting up business relationship with you and hope to provide you with the best service and solution. Let us make a better world for our industry!



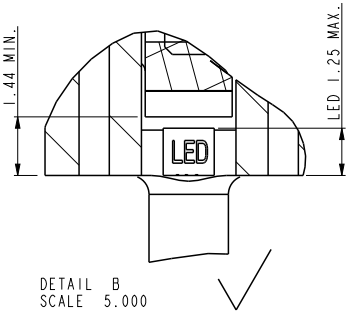
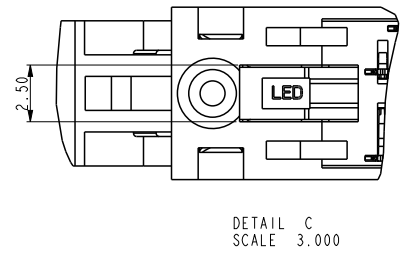
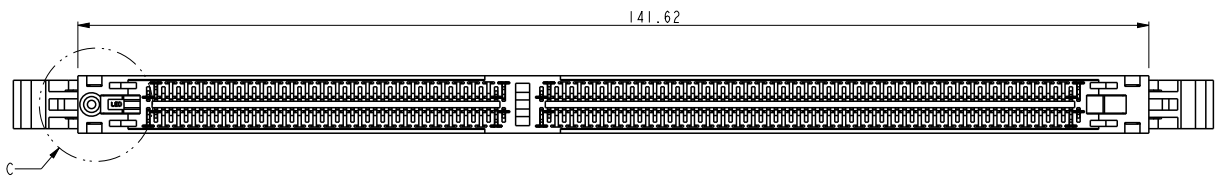
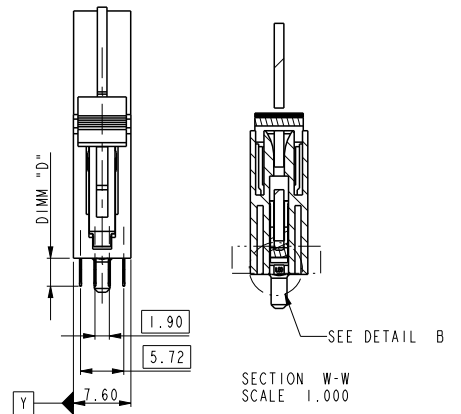
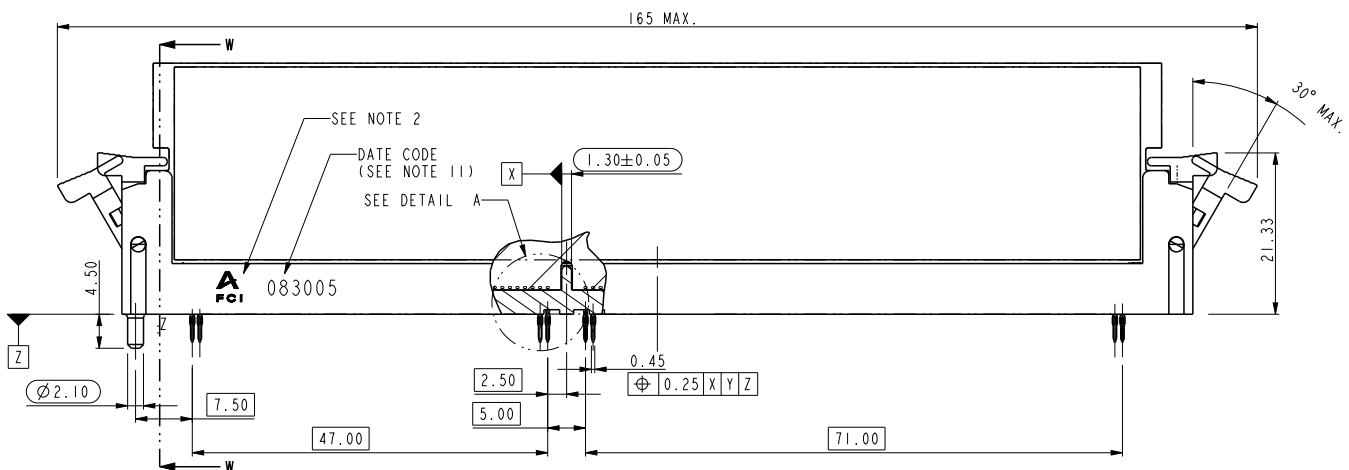
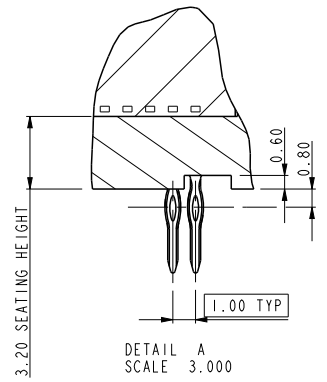
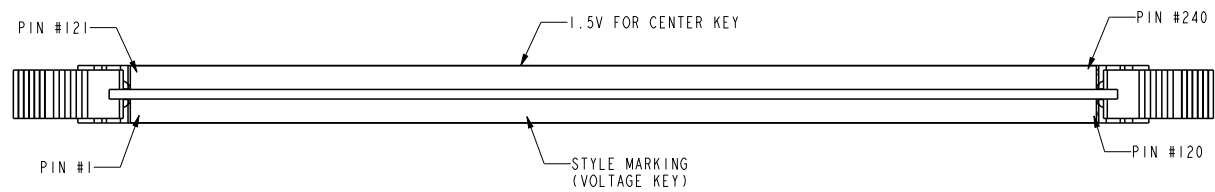
Contact us

Tel: +86-755-8981 8866 Fax: +86-755-8427 6832

Email & Skype: info@chipsmall.com Web: www.chipsmall.com

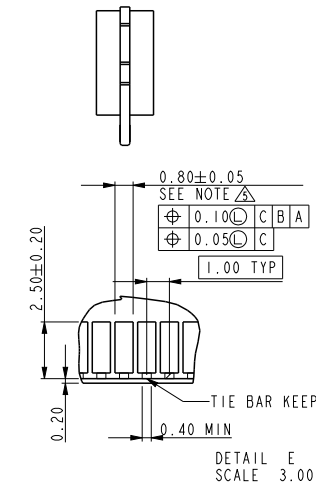
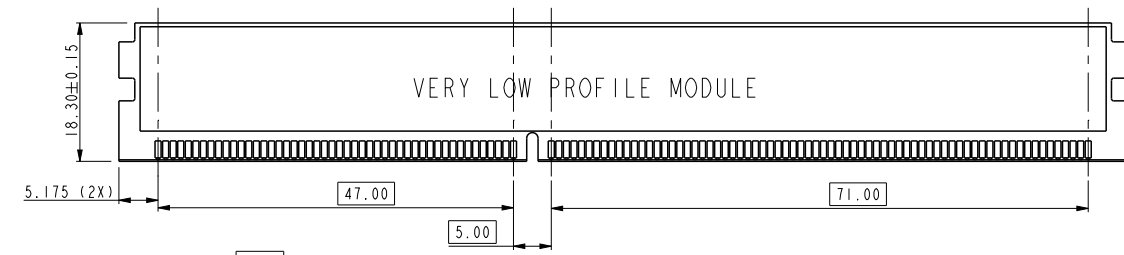
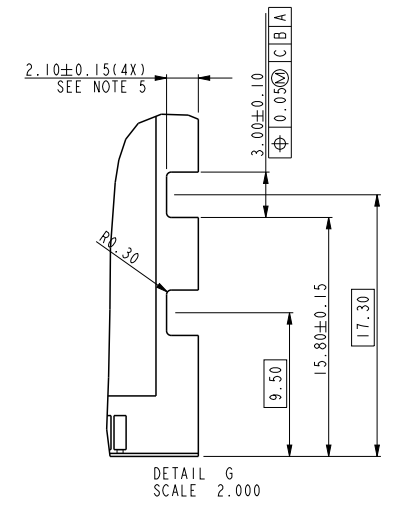
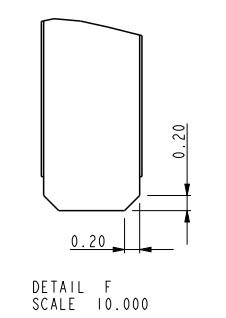
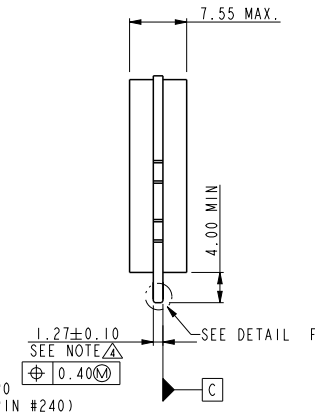
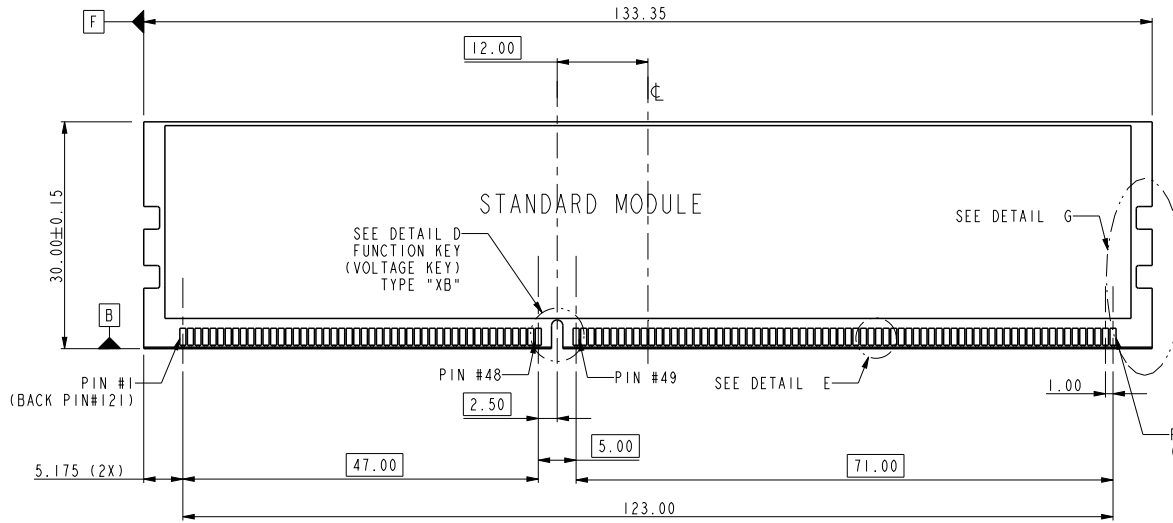
Address: A1208, Overseas Decoration Building, #122 Zhenhua RD., Futian, Shenzhen, China



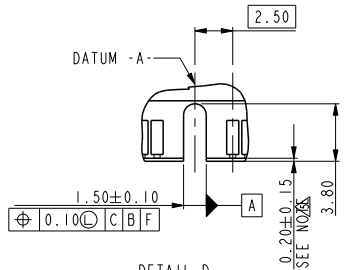


tolerance unless otherwise specified	
linear	.X ± .38
	.XX ± .25
	.XXX ± .13
angles	0° ± 2°

dr	Rick Bian	2010/07/03	projection 	mm ←→	size	A4	scale	0.500
eng	Jeny Ren	2018/05/02			ecn no	ELX-DG-29895-1		
chr	-	-			rel level	Released		
appr	Nickor Zuo	2018/05/07	product family		rev	C		
Amphenol FCi		title			dwg no		10087607	
www.fci.com		cat. no.			Product - Customer Drw		sheet 1 of 4	
		DDR III, 240P PRESS-FIT V/T HOUSING						



tolerance unless otherwise specified	
linear	.X ± .38
	.XX ± .25
	.XXX ± .13
angles	0° ± 2°



DETAIL D
FUNCTION KEY
KEY POSITION CENTER
TYPE "XB"
SCALE 2.000

NOTE:
1. MATERIAL : FR-4.
2. FINISH: SOLDER MASK.
3. BURR: 0.08 MAX.

TYPE "XB"	1.5 VOLTAGE
SUB KEY POS #1	DESCRIPTION

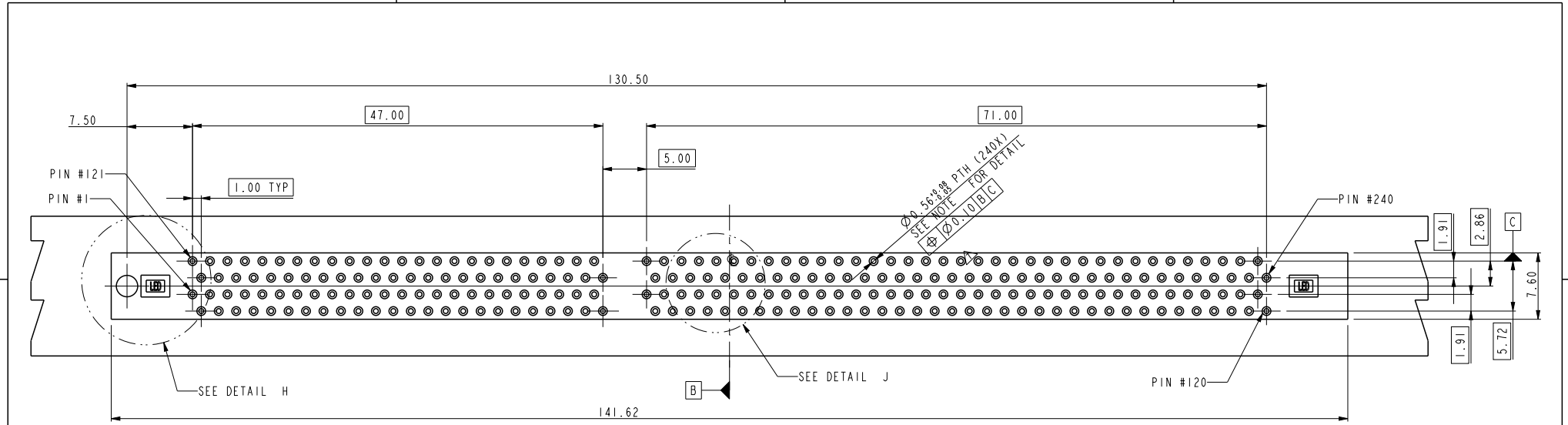
dr	Rick Bian	2010/07/03	projection	mm	size	A4	scale	0.500
eng	Jeny Ren	2018/05/02			ecn no ELX-DG-29895-1			
chr	-	-			rel level Released			
appr	Nickor Zuo	2018/05/07	product family		rev C			
			title		dwg no		rev	
www.fci.com			DDR III, 240P PRESS-FIT V/T HOUSING		10087607		C	
cat. no.			Product - Customer Drw		sheet 2 of 4			

A

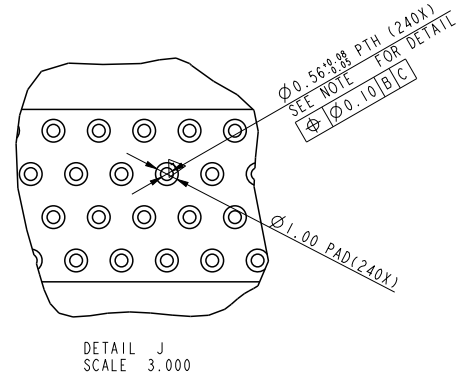
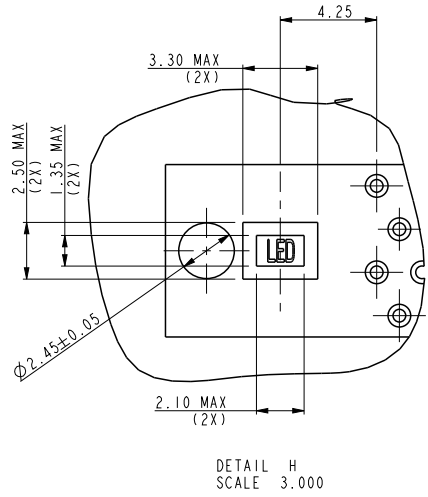
B

C

D



RECOMMENDED CIRCUIT BOARD HOLE LAYOUT



dr	Rick Bian	2010/07/03	projection 	mm ←→	size	A4	scale	0.500	
eng	Jeny Ren	2018/05/02			ecn no	ELX-DG-29895-1			
chr	-	-			rel level	Released			
appr	Nickor Zuo	2018/05/07	product family		rev				
Amphenol FCi		title		DDR III, 240P PRESS-FIT		dwg no		10087607	
www.fci.com		cat. no.		*		Product - Customer Drw		sheet 3 of 4	
tolerance unless otherwise specified		linear		.XX ± .25		.XXX ± .13		angles	0° ± 2°



10087607-□ □ □ □ □

STYLE: MECHANICAL KEYING

1 : 1.5 VOLT. W/CENTER KEY #1

REVISE

0

TAIL LENGTH

CODE	DIM. "D"
0	3.30
1	3.70
2	4.20

PLATING

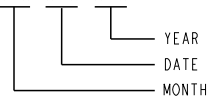
CODE	CONTACT	TAIL AREA	UNDERPLATE	CODE	CONTACT	TAIL AREA	UNDERPLATE
2B	15u" (0.38um) MIN. GOLD	35u"~100u" Tin/Lead PLATING	50u" (1.27um) MIN. NICKEL OVERALL	2LF	15u" (0.38um) MIN. GOLD	35u"~100u" Tin PLATING	50u" (1.27um) MIN. NICKEL OVERALL
3B	30u" (0.76um) MIN. GOLD			3LF	30u" (0.76um) MIN. GOLD		
4B	3u" (0.076um) MIN. GOLD			4LF	3u" (0.076um) MIN. GOLD		
6B	15u" (0.38um) MIN. GOLD (LUBRICATED)	35u"~100u" Tin/Lead PLATING	50u" (1.27um) MIN. NICKEL OVERALL	6LF	15u" (0.38um) MIN. GOLD (lubricated)	35u"~100i" Tin PLATING	50u" (1.27um) MIN. NICKEL OVERALL
7B	30u" (0.76um) MIN. GOLD (LUBRICATED)			7LF	30u" (0.76um) MIN. GOLD (LUBRICATED)		
8B	3u" (0.076um) MIN. GOLD (LUBRICATED)			8LF	3u" (0.076um) MIN. GOLD (LUBRICATED)		

NOTE:

- MATERIAL:
HOUSING: HIGH PERFORMANCE RESINS, GLASS FILLED UL94V-0 RATED, COLOR: BLACK.
EJECTOR: HIGH PERFORMANCE RESINS, GLASS FILLED UL94V-0 RATED, COLOR: NATURAL.
TERMINAL: COPPER ALLOY.
 - FCI LOGO TO BE APPROXIMATELY LOCATED AS SHOWN ON PRINT.
 - PRODUCT SPECIFICATION: GS-12-XXX(SPECIFICATION NOT YET AVAILABLE)
 - CARD THICKNESS APPLIES ACROSS TABS AND INCLUDES PLATING AND / OR METALIZATION.
 - LEADING EDGE OF CONTACT PADS SPECIFIED BY THE KEEP OUT ZONE SHALL BE FREE OF BURRS AND EXTERNAL TIE BARS.
FOR OPTIMUM PERFORMANCE, THE TIE BAR IS TO BE ON AN INTERNAL LAYER SO THAT THE REMNANT CANNOT CAUSE CONTACT DAMAGE.
 - PACKAGING SPECIFICATION: GS-14-528.
 - ALL PTH SHOULD BE 0.66mm DIA DRILLED AND 0.025mm MIN. ELECTRO-DEPOSITED COPPER THK ON THROUGH HOLE WALL.
 - THIS PRODUCT MEETS EUROPEAN UNION DIRECTIVES AND OTHER COUNTRY REGULATIONS AS DESCRIBED IN GS-22-008.
 - THE HOUSING WILL WITHSTAND EXPOSURE TO 260°C PEAK TEMPERATURE FOR 10 SECONDS IN A WAVE SOLDER APPLICATION.
 - THE AMBER EJECTOR CAN WITHSTAND MAX 174°C EXPOSURE TEMPERATURE
- DATE CODE: X X X X X X

COLOR OF HOUSING AN EJECTOR

- 0 : BLACK HOUSING + IVORY EJECTOR
- 1 : BLACK HOUSING + AMBER COLOR EJECTOR
- 2 : BLACK HOUSING + BLACK EJECTOR
- 3 : IVORY HOUSING + IVORY EJECTOR
- 4 : BLUE HOUSING + IVORY EJECTOR



dr	Rick Bian	2010/07/03	projection 	mm 	size	A4	scale	0.500	
eng	Jeny Ren	2018/05/02			ecn no	ELX-DG-29895-1			
chr	-	-			rel level	Released			
appr	Nickor Zuo	2018/05/07	product family		rev no	10087607		rev	C
Amphenol FCI		title			DDR III, 240P PRESS-FIT			V/T HOUSING	
www.fci.com		cat. no.	*	Product - Customer Drw			sheet 4 of 4		