



Chipsmall Limited consists of a professional team with an average of over 10 year of expertise in the distribution of electronic components. Based in Hongkong, we have already established firm and mutual-benefit business relationships with customers from,Europe,America and south Asia,supplying obsolete and hard-to-find components to meet their specific needs.

With the principle of “Quality Parts,Customers Priority,Honest Operation,and Considerate Service”,our business mainly focus on the distribution of electronic components. Line cards we deal with include Microchip,ALPS,ROHM,Xilinx,Pulse,ON,Everlight and Freescale. Main products comprise IC,Modules,Potentiometer,IC Socket,Relay,Connector.Our parts cover such applications as commercial,industrial, and automotives areas.

We are looking forward to setting up business relationship with you and hope to provide you with the best service and solution. Let us make a better world for our industry!



Contact us

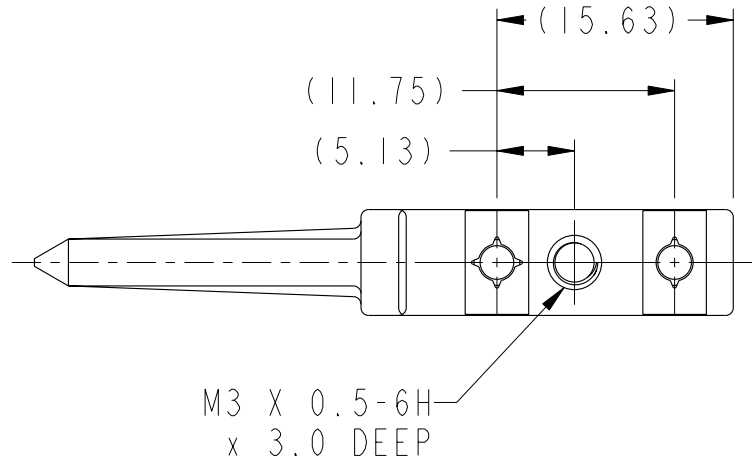
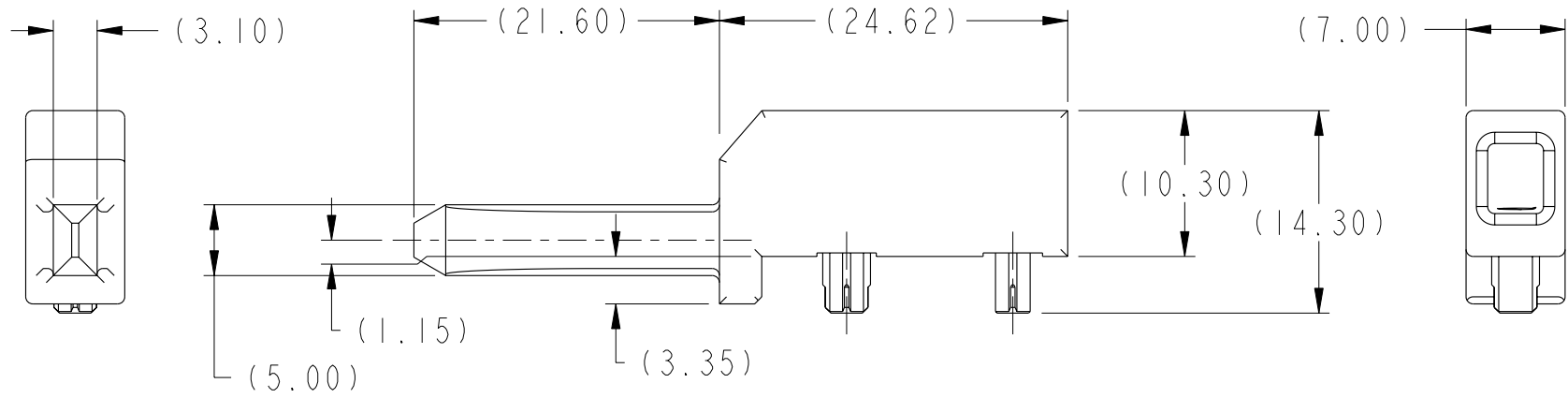
Tel: +86-755-8981 8866 Fax: +86-755-8427 6832

Email & Skype: info@chipsmall.com Web: www.chipsmall.com

Address: A1208, Overseas Decoration Building, #122 Zhenhua RD., Futian, Shenzhen, China



PRODUCT NUMBER
SEE TABLE, SHEET 2



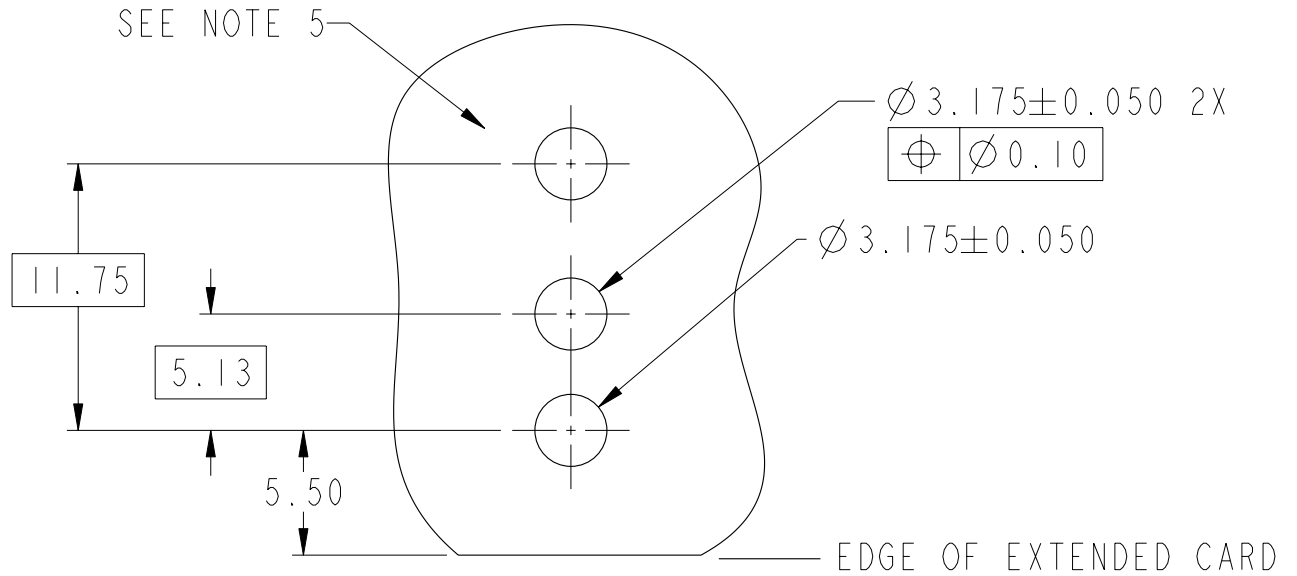
Copyright FCI.

rev	ecn no	dr	date
A	S09-0061	CH	2009-02-25
-	-	-	-
-	-	-	-
-	-	-	-
-	-	-	-
-	-	-	-

www.fciconnect.com		surface 3.2 ASME Y14.5	tolerance std ASME Y14.5	projection MM
TOLERANCES UNLESS OTHERWISE SPECIFIED		0.X ±0.3	0.XX ±0.10	0.XXX ±0.050
Dr	C. H. TAN	2008-05-02	ANGULAR	LINEAR
Eng	C. H. TAN	2008-05-02	0°	±°
Chr	C. H. TAN	2009-02-25	Product family AirMax Accessories	
Appr	JOEY NG	2009-02-25	Spec ref	
FCI			7.2mm R/A GUIDE BLADE	10088275
3 PR, INVERSE COPLANAR			CUSTOMER	Rev. A
catalog no			-	sheet 1 of 2

REV F - 2006-04-17

Product number
10088275-101LF



NOTES:

1. MATERIAL: ZINC ALLOY.
2. FINISH: TRIVALENT CHROMATE IRIDESCENT.
3. APPLICATION SPECIFICATION: GS-20-045.
4. REFER TO CUSTOMER DRAWING 10035911 FOR INFORMATION REGARDING PCB LAYOUT OF POWER AND GUIDE MODULES RELATIVE TO SIGNAL MODULES.
5. RIGHT ANGLE PIN MODULE HAS THE SAME PCB FOOTPRINT AS RIGHT ANGLE RECEPTACLE MODULE (REF P/N 10045367 SHEET 2).
6. THIS PRODUCT MEETS EUROPEAN DIRECTIVES AND OTHER COUNTRY REGULATIONS AS DESCRIBED IN GS-22-008
7. PACKAGING MEETS GS-14-920 LEAD FREE LABELING SPECIFICATION.

RECOMMENDED PCB LAYOUT
NOTE 4
SCALE 3:1

EDGE OF EXTENDED CARD



7.2mm R/A GUIDE BLADE
3 PR, INVERSE COPLANAR
catalog no

dwg no 10088275

Rev. A

CUSTOMER sheet 2 of 2