



Chipsmall Limited consists of a professional team with an average of over 10 year of expertise in the distribution of electronic components. Based in Hongkong, we have already established firm and mutual-benefit business relationships with customers from,Europe,America and south Asia,supplying obsolete and hard-to-find components to meet their specific needs.

With the principle of “Quality Parts,Customers Priority,Honest Operation,and Considerate Service”,our business mainly focus on the distribution of electronic components. Line cards we deal with include Microchip,ALPS,ROHM,Xilinx,Pulse,ON,Everlight and Freescale. Main products comprise IC,Modules,Potentiometer,IC Socket,Relay,Connector.Our parts cover such applications as commercial,industrial, and automotives areas.

We are looking forward to setting up business relationship with you and hope to provide you with the best service and solution. Let us make a better world for our industry!



Contact us

Tel: +86-755-8981 8866 Fax: +86-755-8427 6832

Email & Skype: info@chipsmall.com Web: www.chipsmall.com

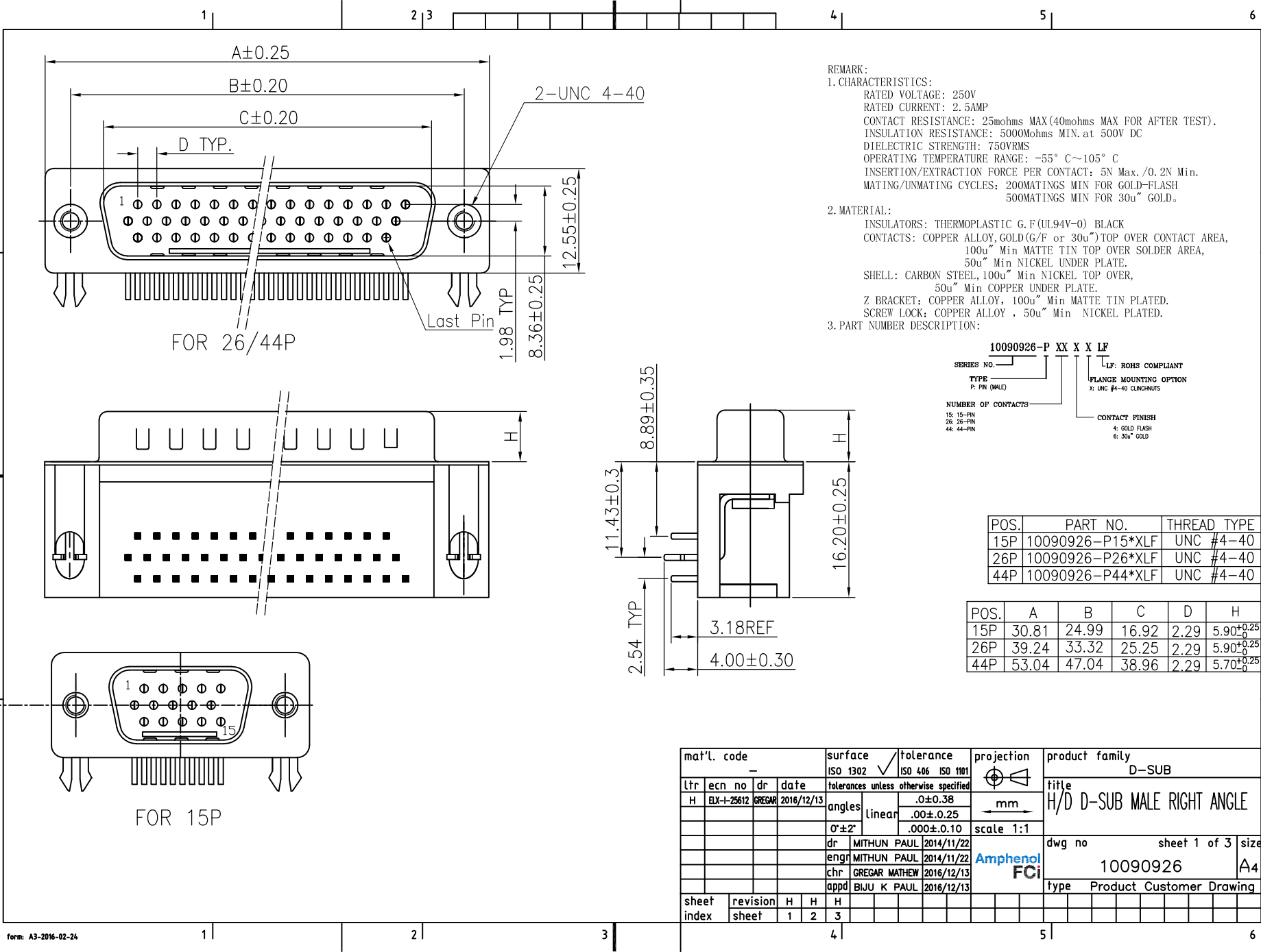
Address: A1208, Overseas Decoration Building, #122 Zhenhua RD., Futian, Shenzhen, China



AFCI CONFIDENTIAL

Amphenol
FCi

This document is the property of and embodies CONFIDENTIAL and PROPRIETARY information of AFCL. No part of the information shown on this document may be used in any way or disclosed to others without the written consent of Amphenol AFCL.



REMARK:
 1. CHARACTERISTICS:
 RATED VOLTAGE: 250V
 RATED CURRENT: 2.5AMP
 CONTACT RESISTANCE: 25mohms MAX(40mohms MAX FOR AFTER TEST).
 INSULATION RESISTANCE: 5000Mohms MIN. at 500V DC
 DIELECTRIC STRENGTH: 750VRMS
 OPERATING TEMPERATURE RANGE: -55° C~105° C
 INSERTION/EXTRACTION FORCE PER CONTACT: 5N Max./0.2N Min.
 MATING/UNMATING CYCLES: 200MATINGS MIN FOR GOLD-FLASH
 500MATINGS MIN FOR 30u" GOLD.
 2. MATERIAL:
 INSULATORS: THERMOPLASTIC G.F(UL94V-0) BLACK
 CONTACTS: COPPER ALLOY, GOLD(G/F or 30u")TOP OVER CONTACT AREA,
 100u" Min MATTE TIN TOP OVER SOLDER AREA,
 50u" Min NICKEL UNDER PLATE.
 SHELL: CARBON STEEL, 100u" Min NICKEL TOP OVER,
 50u" Min COPPER UNDER PLATE.
 Z BRACKET: COPPER ALLOY, 100u" Min MATTE TIN PLATED.
 SCREW LOCK: COPPER ALLOY, 50u" Min NICKEL PLATED.
 3. PART NUMBER DESCRIPTION:

10090926-P XX X X LF
 SERIES NO. _____
 TYPE P: PIN (MALE)
 NUMBER OF CONTACTS
 15: 15-PIN
 26: 26-PIN
 44: 44-PIN
 LF: ROHS COMPLIANT
 FLANGE MOUNTING OPTION
 X: UNC #4-40 CLINCHNUTS
 CONTACT FINISH
 4: GOLD FLASH
 6: 30u" GOLD

POS.	PART NO.	THREAD TYPE
15P	10090926-P15*XLF	UNC #4-40
26P	10090926-P26*XLF	UNC #4-40
44P	10090926-P44*XLF	UNC #4-40

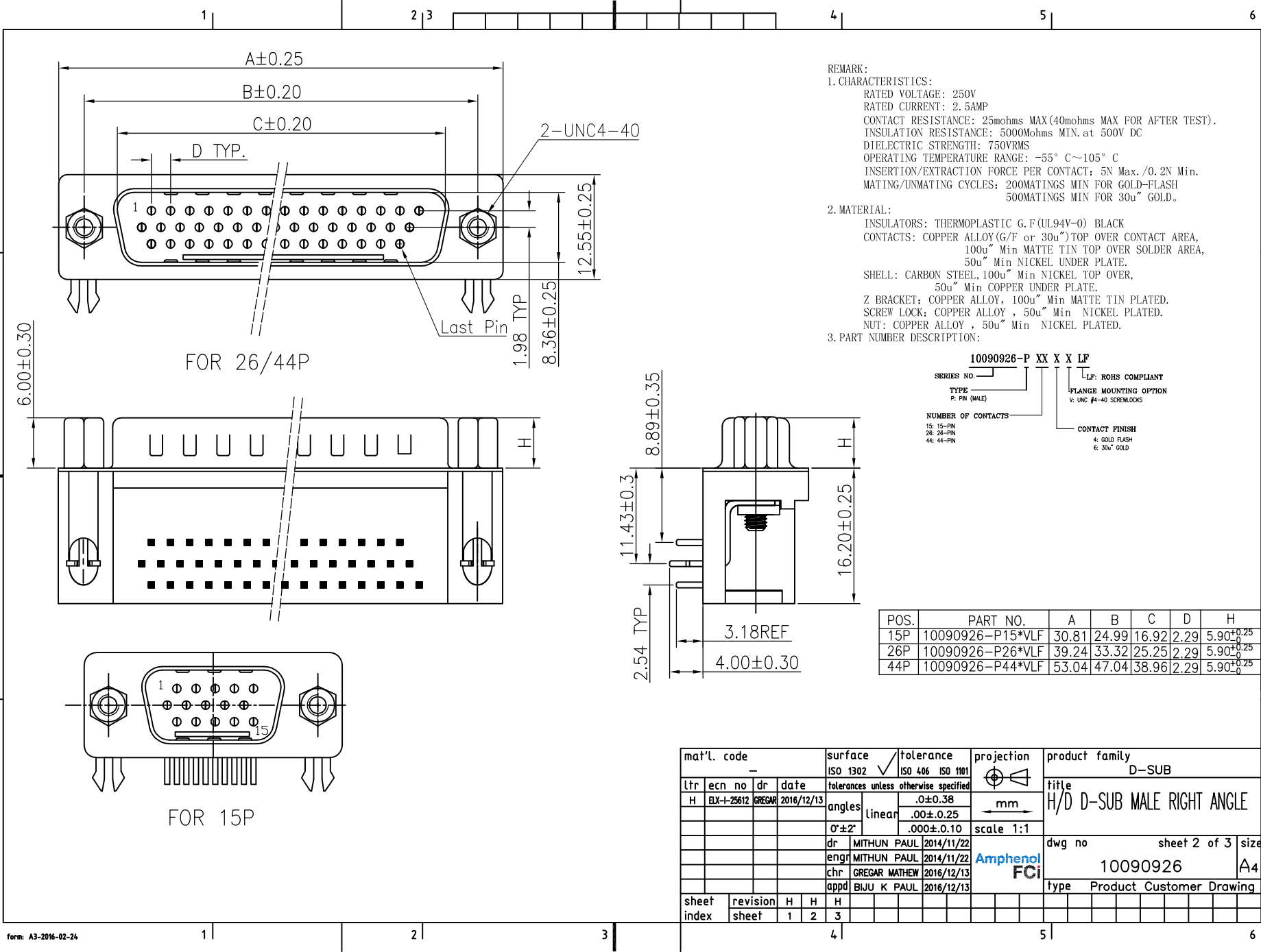
POS.	A	B	C	D	H
15P	30.81	24.99	16.92	2.29	5.90 ^{+0.25} ₀
26P	39.24	33.32	25.25	2.29	5.90 ^{+0.25} ₀
44P	53.04	47.04	38.96	2.29	5.70 ^{+0.25} ₀

mat'l. code	surface	tolerance	projection	product family
-	ISO 1302 ✓	ISO 406 ISO 1101	mm	D-SUB
ltr	ecn no	dr	date	title
H	ELX-I-25612	GREGAR	2016/12/13	H/D D-SUB MALE RIGHT ANGLE
				angles
				linear
				0°±2'
				dr
				engr
				chr
				appd
sheet	revision	H	H	H
index	sheet	1	2	3

AFCI CONFIDENTIAL

Amphenol
FCI

This document is the property of and embodies CONFIDENTIAL and PROPRIETARY information of AFCI. No part of the information shown on this document may be used in any way or disclosed to others without the written consent of AFCI.



REMARK:

1. CHARACTERISTICS:
 RATED VOLTAGE: 250V
 RATED CURRENT: 2.5AMP
 CONTACT RESISTANCE: 25mohms MAX (40mohms MAX FOR AFTER TEST).
 INSULATION RESISTANCE: 5000Mohms MIN. at 500V DC
 DIELECTRIC STRENGTH: 750VRMS
 OPERATING TEMPERATURE RANGE: -55° C~105° C
 INSERTION/EXTRACTION FORCE PER CONTACT: 5N Max./0.2N Min.
 MATING/UNMATING CYCLES: 200MATINGS MIN FOR GOLD-FLASH
 500MATINGS MIN FOR 30u" GOLD.

2. MATERIAL:
 INSULATORS: THERMOPLASTIC G.F (UL94V-0) BLACK
 CONTACTS: COPPER ALLOY (G/F or 30u") TOP OVER CONTACT AREA,
 100u" Min MATTE TIN TOP OVER SOLDER AREA,
 50u" Min NICKEL UNDER PLATE.
 SHELL: CARBON STEEL, 100u" Min NICKEL TOP OVER,
 50u" Min COPPER UNDER PLATE.
 Z BRACKET: COPPER ALLOY, 100u" Min MATTE TIN PLATED.
 SCREW LOCK: COPPER ALLOY, 50u" Min NICKEL PLATED.
 NUT: COPPER ALLOY, 50u" Min NICKEL PLATED.

3. PART NUMBER DESCRIPTION:

10090926-P XX X X LF

SERIES NO. _____ LF: ROHS COMPLIANT
 TYPE _____ FLANGE MOUNTING OPTION
 P: PN (MALE) v: UNC #4-40 SCREWLOCKS

NUMBER OF CONTACTS _____ CONTACT FINISH
 15: 15-PIN 4: GOLD FLASH
 26: 26-PIN 6: 30u" GOLD
 44: 44-PIN

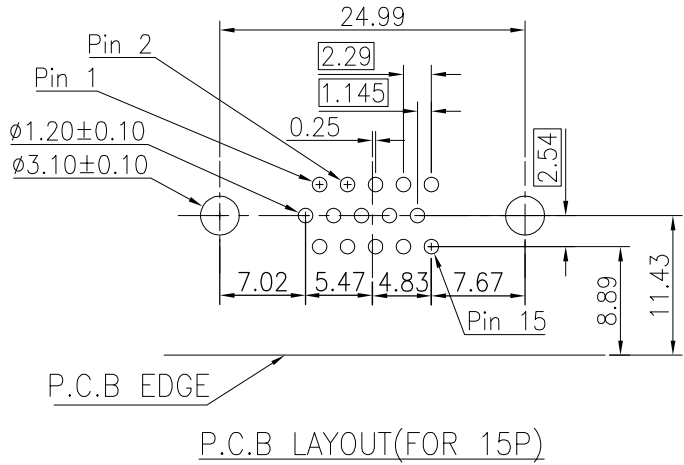
POS.	PART NO.	A	B	C	D	H
15P	10090926-P15*VLF	30.81	24.99	16.92	2.29	5.90 ^{+0.25}
26P	10090926-P26*VLF	39.24	33.32	25.25	2.29	5.90 ^{+0.25}
44P	10090926-P44*VLF	53.04	47.04	38.96	2.29	5.90 ^{+0.25}

mat'l. code		surface		tolerance		projection		product family	
-		ISO 1302		ISO 406 ISO 1101				D-SUB	
ltr		ecn no		dr		date		title	
H		ELX-I-25612		GREGAR		2016/12/13		H/D D-SUB MALE RIGHT ANGLE	
				angles		linear		mm	
				.0±0.38					
				0°±2'		.00±0.25			
						.000±0.10		scale 1:1	
		dr		MITHUN PAUL		2014/11/22		Amphenol FCI	
		engr		MITHUN PAUL		2014/11/22		dwg no	
		chr		GREGAR MATHEW		2016/12/13		sheet 2 of 3	
		appd		BIJU K PAUL		2016/12/13		10090926	
sheet		revision		H		H		size	
index		sheet		1		2		A4	
				H		H		type	
				1		2		Product Customer Drawing	

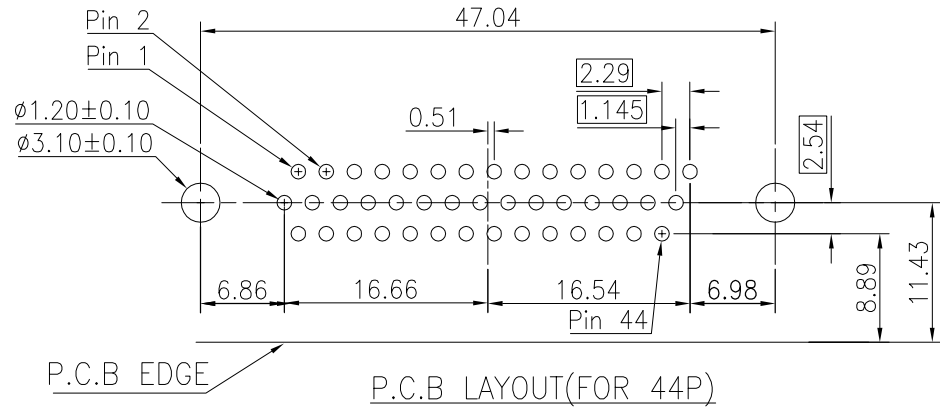
AFCI CONFIDENTIAL

Amphenol
FCi

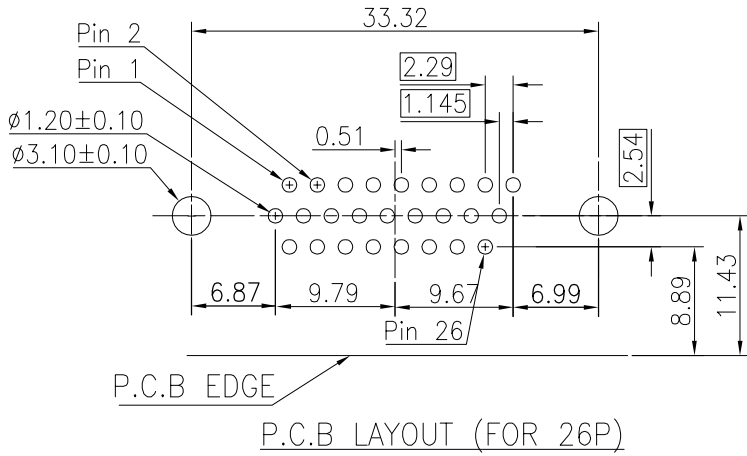
This document is the property of and embodies CONFIDENTIAL and PROPRIETARY information of AFCL. No part of the information shown on this document may be used in any way or disclosed to others without the written consent of Amphenol AFCL.



P.C.B LAYOUT (FOR 15P)



P.C.B LAYOUT (FOR 44P)



P.C.B LAYOUT (FOR 26P)

mat'l. code		surface		tolerance		projection		product family	
-		ISO 1302		ISO 406 ISO 1101				D-SUB	
ltr		ecn no		dr		date		title	
H		ELX-I-25612		GREGAR		2016/12/13		H/D D-SUB MALE RIGHT ANGLE	
		angles		linear		mm		dwg no	
				.0±0.38				sheet 3 of 3	
				.00±0.25				size	
				.000±0.10		scale 1:1		10090926	
		dr		MITHUN PAUL		2014/11/22		Amphenol FCI	
		engr		MITHUN PAUL		2014/11/22		type	
		chr		GREGAR MATHEW		2016/12/13		Product Customer Drawing	
		appd		BIJU K PAUL		2016/12/13			
sheet index		revision sheet		H		H		H	
		1 2		3					