



Chipsmall Limited consists of a professional team with an average of over 10 year of expertise in the distribution of electronic components. Based in Hongkong, we have already established firm and mutual-benefit business relationships with customers from,Europe,America and south Asia,supplying obsolete and hard-to-find components to meet their specific needs.

With the principle of “Quality Parts,Customers Priority,Honest Operation,and Considerate Service”,our business mainly focus on the distribution of electronic components. Line cards we deal with include Microchip,ALPS,ROHM,Xilinx,Pulse,ON,Everlight and Freescale. Main products comprise IC,Modules,Potentiometer,IC Socket,Relay,Connector.Our parts cover such applications as commercial,industrial, and automotives areas.

We are looking forward to setting up business relationship with you and hope to provide you with the best service and solution. Let us make a better world for our industry!



Contact us

Tel: +86-755-8981 8866 Fax: +86-755-8427 6832

Email & Skype: info@chipsmall.com Web: www.chipsmall.com

Address: A1208, Overseas Decoration Building, #122 Zhenhua RD., Futian, Shenzhen, China

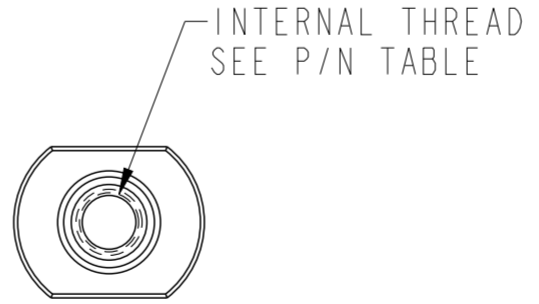
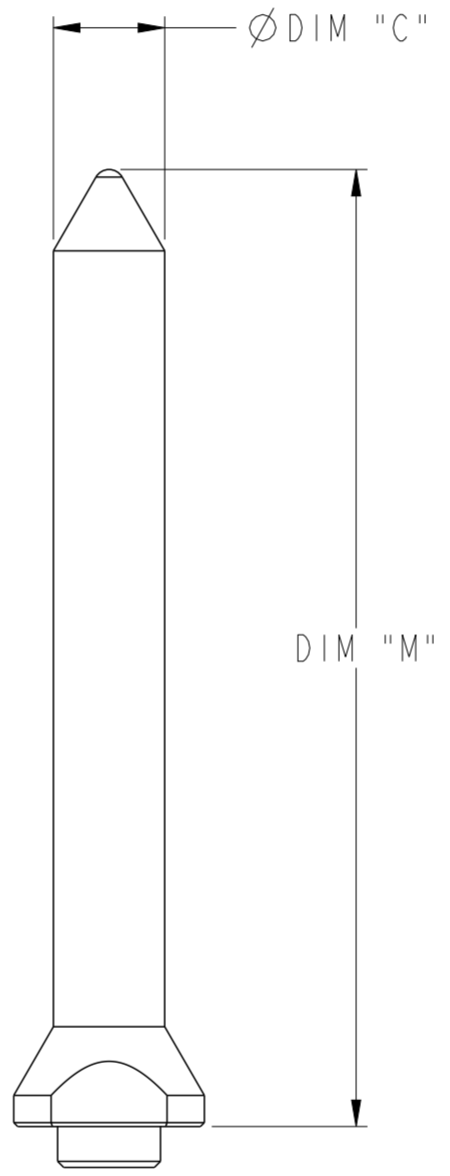
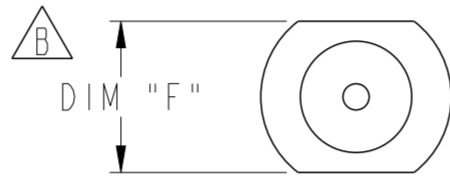


PART NUMBER	DIAMETER		THREAD	DIM "F"	DIM "M"	DIM "S"	DIM "T"	SUPPORTS (SEE TABLE 2)
	DESCRIPTION	DIM "C"						
10091775-001LF	STANDARD	Ø 3.68	#2-56	5.00	31.64	4.81	4.44	3, 4, 5, & 6-PAIR
10091775-002LF	LARGE	Ø 5.52	#6-32	7.00	28.14	6.66	6.29	3, 4, 5, & 6-PAIR
10091775-003LF	STANDARD	Ø 3.68	#2-56	5.00	25.70	4.81	4.44	2-PAIR
10091775-004LF	STANDARD	Ø 3.68	#2-56	5.00	38.00	4.81	4.44	STACKER
10091775-005LF	LARGE	Ø 5.52	#6-32	7.00	31.64	6.66	6.29	3, 4, 5, & 6-PAIR

THREAD	THREAD LENGTH	PCB THICKNESS RANGE	PART NUMBER	GENERAL DESCRIPTION
#2-56 UNC	.375" / 9.53mm	1.60 - 5.00	10091790-002LF	PHILLIPS PAN-HEAD SEMS SCREW WITH SQUARE-CONICAL WASHER
	.500" / 12.7mm	5.00 - 8.00	10091790-003LF	
	.625" / 15.88mm	8.00 - 10.00	10091790-004LF	
#6-32 UNC	.375" / 9.53mm	1.60 - 4.00	10091791-001LF	
	.500" / 12.7mm	4.00 - 7.50	10091791-002LF	
	.625" / 15.88mm	7.50 - 10.00	10091791-003LF	

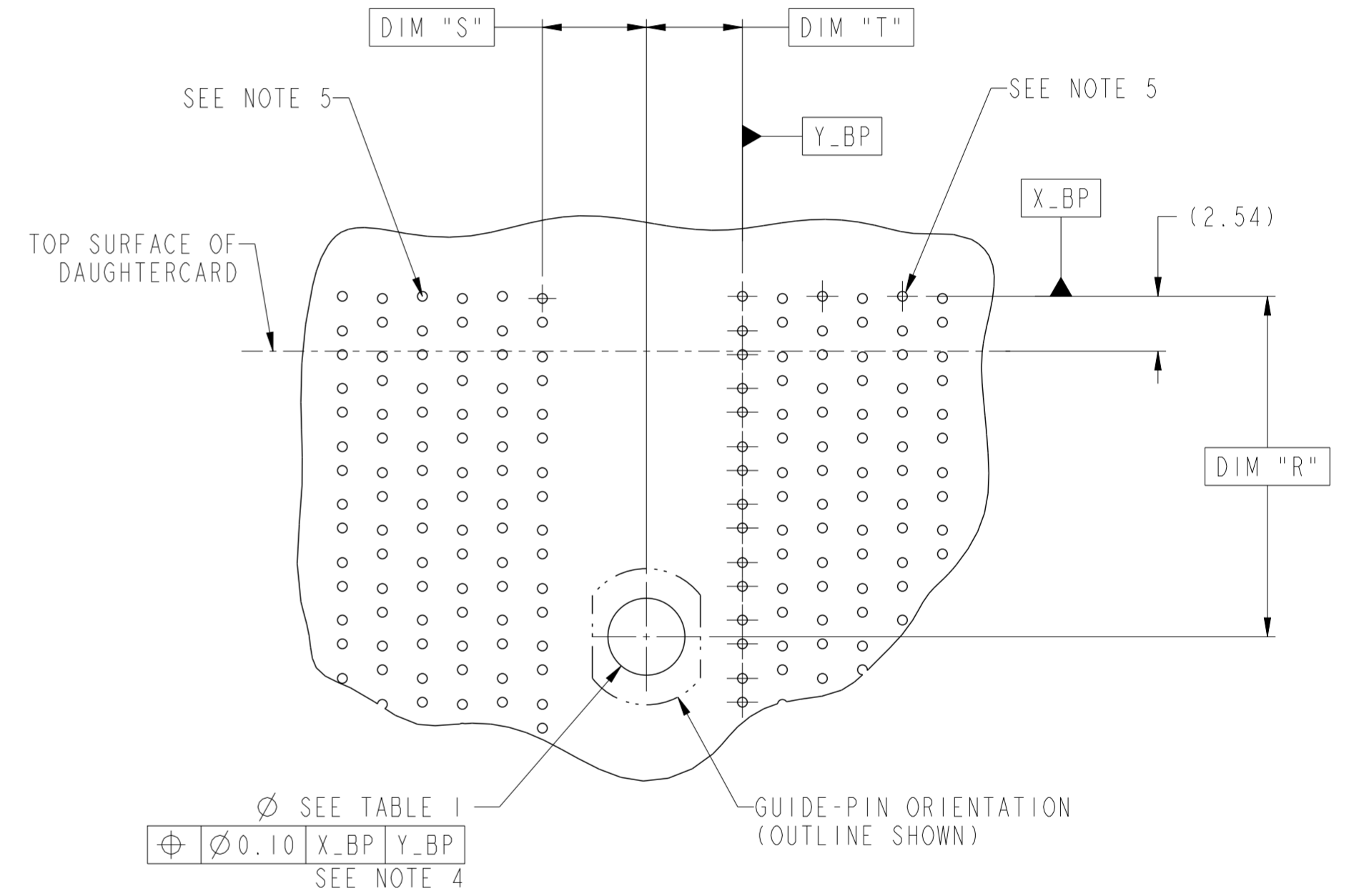
NOTES:

- MATERIAL: STAINLESS STEEL
- GUIDE-PIN SUPPORTS ALL XCede BAKPLANE MODULES AS NOTED IN P/N TABLE.
- XCede PRODUCT SPECIFICATION: GS-12-588 (PRELIMINARY)
- XCede APPLICATION SPECIFICATION: GS-20-121 (PRELIMINARY)
- PLATED THROUGH HOLE OPTION SUPPORTS CONNECTION TO CHASSIS FOR GROUNDED GUIDE-MODULE OPTION. SEE XCede APPLICATION SPECIFICATION FOR ROUTING GUIDELINES.
- XCede PCB FOOTPRINTS ARE SHOWN FOR RELATIVE PLACEMENT REFERENCE ONLY. PLEASE SEE APPLICABLE XCede MODULE DRAWING FOR DETAILED XCede FOOTPRINT REQUIREMENTS.
- GUIDE PIN REQUIRES SCREW FOR MOUNTING. SEE TABLE 3 FOR SUPPORTING SCREW OPTIONS.
- A \triangle SYMBOL WILL BE NEXT TO ANY DIMENSION, NOTES OR VIEW WHICH HAS BEEN MODIFIED WITH THE CURRENT DRAWING REVISION.



XCede PRODUCT VERSION	DIM "R"	
	STANDARD DIA PINS	LARGE DIA PINS
2-PAIR	6.79	N/A
3-PAIR	11.495	TBD
4-PAIR	15.75	14.75
5-PAIR	15.75	17.53
6-PAIR	15.75	17.53

	STANDARD-DIAMETER GUIDE-PIN		LARGE-DIAMETER GUIDE-PIN	
	UNGROUND	GROUND	UNGROUND	GROUND
FHS	Ø 3.48 - 3.63		Ø 5.58 - 5.73	
PAD	N/A	Ø 6.5	N/A	Ø 8.5
PLATED	NO	YES	NO	YES
DRILL (mm)	3.57	3.66	5.61	5.79
DRILL (in)	.1405	.144	.221	.228



PCB FOOTPRINT
GUIDE-PIN HOLE RELATIVE TO XCede SIGNAL MODULES
APPLIES TO ALL XCede SIZES AND GUIDE-PIN DASH NUMBERS
SEE NOTE 5 AND TABLES 1 & 2

spec ref	GS-12-588	dr	Jim Swain	2009/08/27	projection	mm	size	A2	scale	1:1
tolerance std	ASME Y14.5	eng	Matthew Cheong	2014/09/22	chr	-	ecn no	ELX-S-18865-1	rel level	Released
surface	✓	appr	Chen-Hong Tan	2014/09/28	product family	XCede	cat. no.	10091775	rev	B
ASME Y14.5	linear	0.X	±0.25	0.XX	±0.13	0.XXX	±	angular	0°	±2°

Copyright FCI. FCI