



Chipsmall Limited consists of a professional team with an average of over 10 year of expertise in the distribution of electronic components. Based in Hongkong, we have already established firm and mutual-benefit business relationships with customers from,Europe,America and south Asia,supplying obsolete and hard-to-find components to meet their specific needs.

With the principle of “Quality Parts,Customers Priority,Honest Operation,and Considerate Service”,our business mainly focus on the distribution of electronic components. Line cards we deal with include Microchip,ALPS,ROHM,Xilinx,Pulse,ON,Everlight and Freescale. Main products comprise IC,Modules,Potentiometer,IC Socket,Relay,Connector.Our parts cover such applications as commercial,industrial, and automotives areas.

We are looking forward to setting up business relationship with you and hope to provide you with the best service and solution. Let us make a better world for our industry!



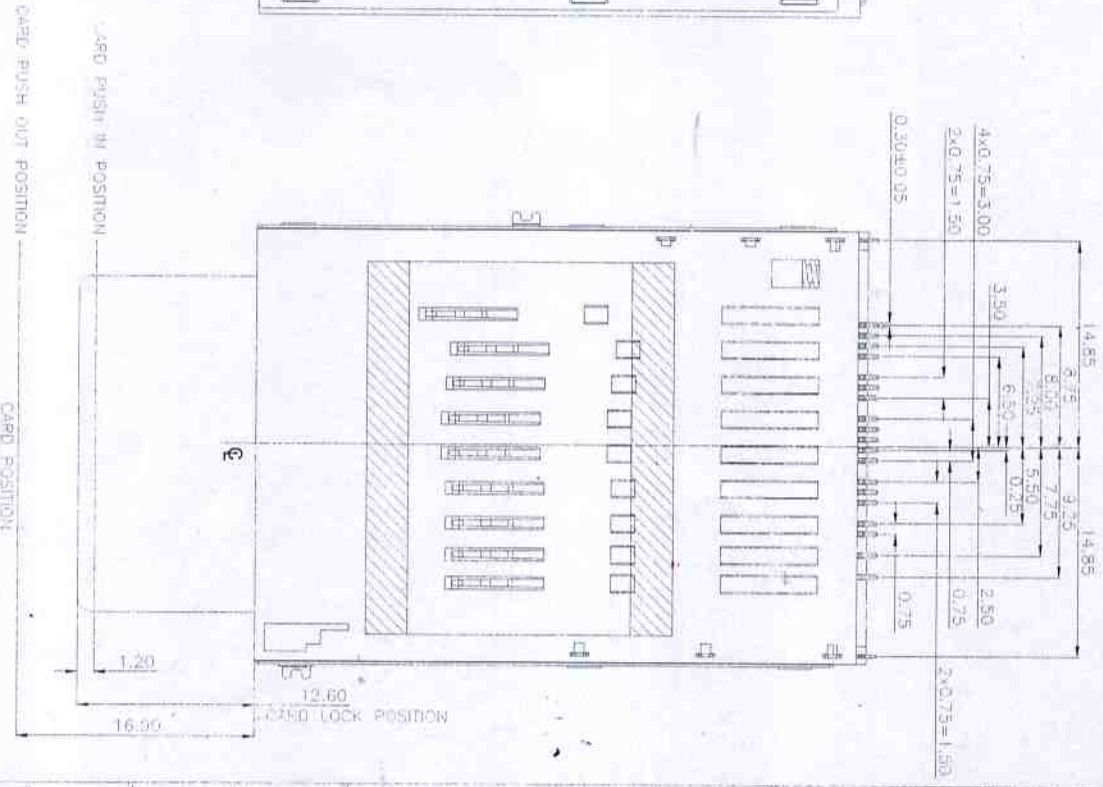
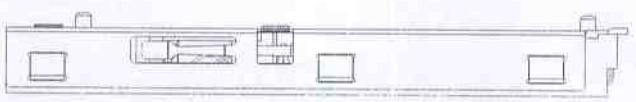
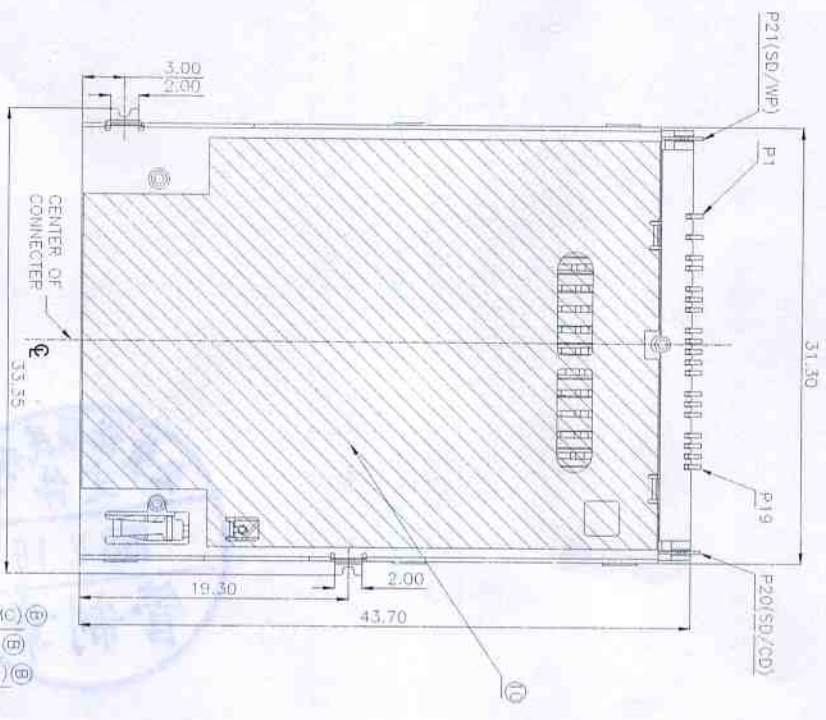
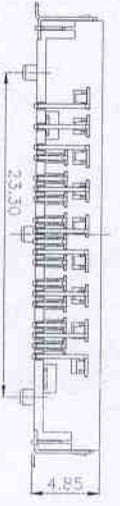
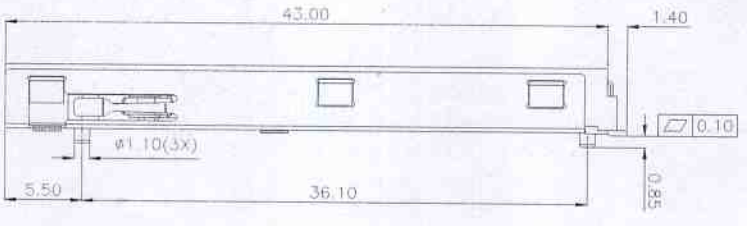
Contact us

Tel: +86-755-8981 8866 Fax: +86-755-8427 6832

Email & Skype: info@chipsmall.com Web: www.chipsmall.com

Address: A1208, Overseas Decoration Building, #122 Zhenhua RD., Futian, Shenzhen, China



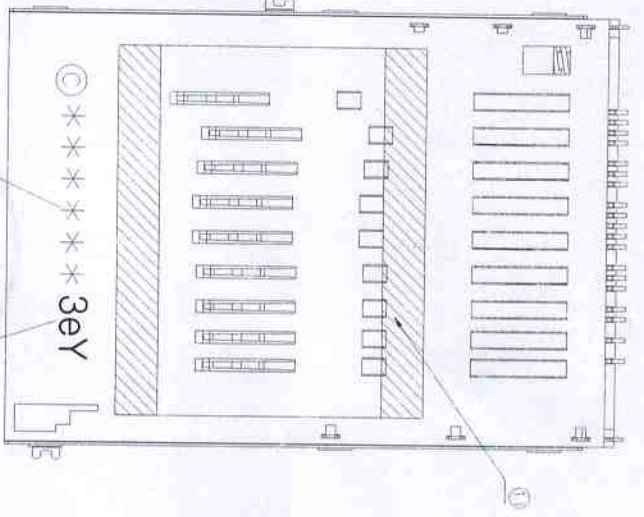
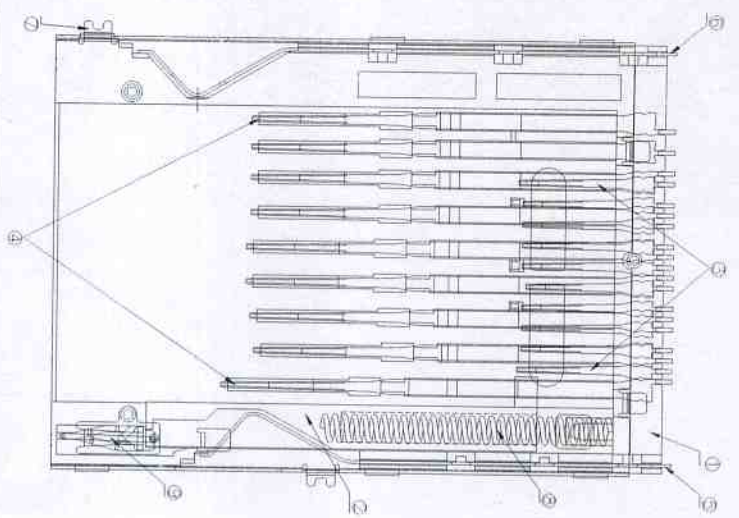


- NOTES:
1. MATERIAL: SEE TABLE
 2. PLATING: SEE TABLE
 3. DATE CODE: *****
 4. ROHS COMPLIANT PRODUCT
 5. ELECTRICAL CHARACTERISTICS:
CURRENT RATING: 0.5A
WITHSTANDING VOLTAGE: 500V AC/DC
INSULATION RESISTANCE: 500M ohm Min.
CONTACT RESISTANCE: 100M ohm Max.
 6. MECHANICAL CHARACTERISTICS:
MATING CYCLES: TOTAL 10000 CYCLES
ENVIRONMENTAL
OPERATING TEMPERATURE: -20°C~60°C

GENERAL TOLERANCE	FILE NO.	19100572	PART NO.	1910057889	DRAWN	Shirley Gao	MATERIAL	DATE	2008/12/10	SCALE	UNITS	MM
X ± 0.30	X ± 1.5*	REV	TITLE	3 in 1 P/F CARD SWITCH MOUNT ENH. 1910	CHECKED	Jane Yang						
X ± 0.38	X ± 1.2*	SIZE	SHEET	1 OF 2	APPROVED							
X ± 0.25	X ± 1.1*	A4										

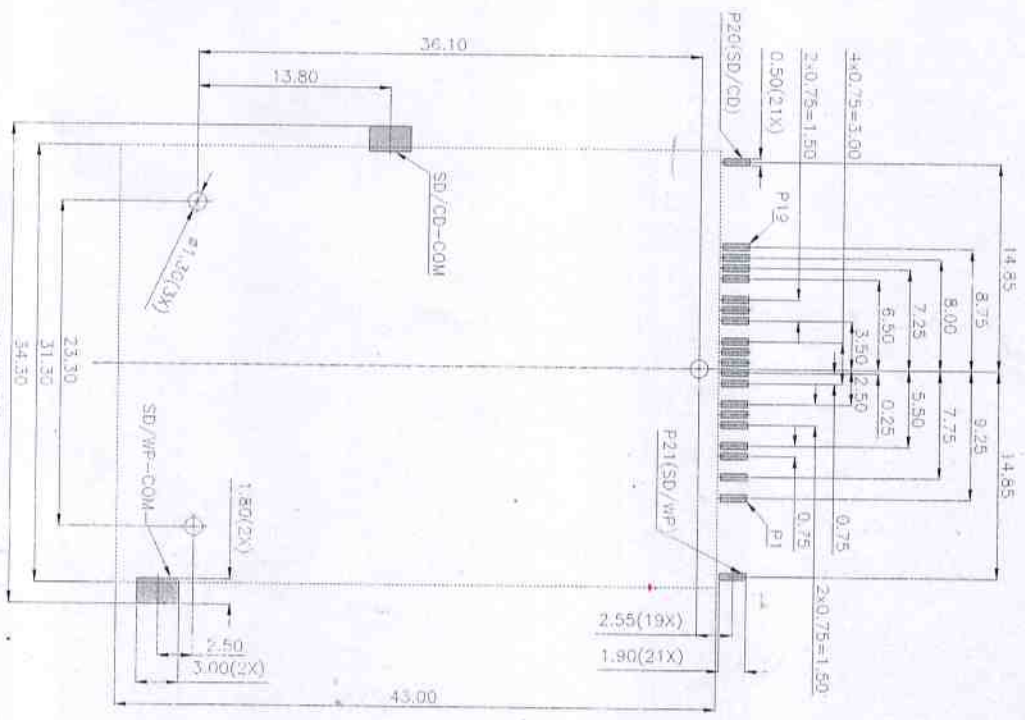
REV	DATE	DESCRIPTION	DATE
B	2008/12/10	MODIFY	2008/12/10
C	2008/12/10	MODIFY	2008/12/10

Amphenol Shoufmin Industries



Pin assignments:

Pin No.	FUNCTION	SD/MAC	MS
P1	SD-DAT1	8P	
P2	SD-DAT0	7P	
P3	SD-GND	6P	
P4	MS-GND		1P
P5	MS-BS		2P
P6	SD-CLK	5P	
P7	MS-DAT1		3P
P8	MS-DAT0		4P
P9	SD-VCC	4P	
P10	MS-DAT2		5P
P11	SD-GND	3P	
P12	MS-INS		6P
P13	MS-DAT3		7P
P14	SD-CMD	3P	
P15	MS-SCLK		8P
P16	MS-VCC		9P
P17	SD-DAT3	1P	
P18	MS-GND		10P
P19	SD-DAT2	9P	



PCB LAYOUT
Note: All tolerance is ±0.05

ITEM	TITLE	MATERIAL	PLATING
1	Housing	LDG CRISTAL PLYMER COLOR: BRN/BLACK	
2	Slide	NONGLASS PIER FILLED COLOR: BLACK/SLV-0	
3	MS terminal	PROPOSE BRONZE	SOLD 15 MICRON厚 PLATED ON CONTACT PART IN PLATED 120 MICRON厚 ON SOLDER AREA NICKEL UNDERPLATING OVERALL
4	SD terminal	PROPOSE BRONZE	SOLD 15 MICRON厚 PLATED ON CONTACT PART IN PLATED 120 MICRON厚 ON SOLDER AREA NICKEL UNDERPLATING OVERALL
5	CD terminal	PROPOSE BRONZE	SOLD 1 MICRON厚 PLATED ON CONTACT AREA PART IN PLATED 120 MICRON厚 ON SOLDER AREA NICKEL UNDERPLATING OVERALL
6	WE terminal	PROPOSE BRONZE	SOLD 1 MICRON厚 PLATED ON CONTACT AREA PART IN PLATED 120 MICRON厚 ON SOLDER AREA NICKEL UNDERPLATING OVERALL
7	Metral Shell	STAINLESS STEEL	NICKEL UNDERPLATING OVER ALL
8	Coil Spring	SW6B	NICKEL PLATED OVERALL
9	Link	STAINLESS STEEL	
10	Mylar-1	POLYESTER	
11	Mylar-2	POLYESTER	

GENERAL TOLERANCE FILE NO. 10100578

PARTNO. 1010057889

DRAWN Shirley Gao

MATERIAL

DATE 2008/12/10

SCALE 1:1

REV. 1	DATE 2008/12/10	BY JANE
REV. 2	DATE	BY

TITLE 5 in.1 P/P CARO CONN
BOTTOM MOUNT EVEN TYPE

CHECKED

APPROVED Jane Zhao

Amphenol Shouhain Industry

REV.	EQUIV.	MODIF. COMMENT	DATE
B	05059.051	MODIFY	2008/09/24
C	05059.046	MODIFY	2008/12/10