



Chipsmall Limited consists of a professional team with an average of over 10 year of expertise in the distribution of electronic components. Based in Hongkong, we have already established firm and mutual-benefit business relationships with customers from,Europe,America and south Asia,supplying obsolete and hard-to-find components to meet their specific needs.

With the principle of “Quality Parts,Customers Priority,Honest Operation,and Considerate Service”,our business mainly focus on the distribution of electronic components. Line cards we deal with include Microchip,ALPS,ROHM,Xilinx,Pulse,ON,Everlight and Freescale. Main products comprise IC,Modules,Potentiometer,IC Socket,Relay,Connector.Our parts cover such applications as commercial,industrial, and automotives areas.

We are looking forward to setting up business relationship with you and hope to provide you with the best service and solution. Let us make a better world for our industry!



Contact us

Tel: +86-755-8981 8866 Fax: +86-755-8427 6832

Email & Skype: info@chipsmall.com Web: www.chipsmall.com

Address: A1208, Overseas Decoration Building, #122 Zhenhua RD., Futian, Shenzhen, China





SINGLE-BOARD
COMPUTER



RABBIT SBC BL4S100 SERIES

Integrated hardware and software platform to easily implement a ZigBee enabled Ethernet gateway ideal for monitoring and control

Digi's BL4S100 series single-board computers offer a cost-competitive solution for control and communication that dramatically reduces your time to market.

The series is designed to support the rapidly-increasing use of ZigBee connectivity for companies looking to deploy wireless networking. Digi International's ZigBee RF modules are compatible with ZigBee PRO compliant devices from other manufacturers, providing great flexibility in choices of nodes to include in the network. Build feature-rich web pages that allow control and monitoring of ZigBee enabled networks by using ZigBee AT and API command libraries. With two available

RS-232 ports, eight analog inputs and 20 Digital I/O lines, the BL4S100 is well suited to handle a wide range of applications requiring ZigBee connectivity.

Digi also offers a plastic enclosure and mesh networking add-on kit to support further design requirements.

BENEFITS

- Rabbit 4000 running at 40 MHz
- On-board Rabbit RIO® device for exceptional I/O functionality and flexibility
- Web server functionality
- Easy implementation of mesh networking with known good hardware
- Dynamic C® software environment to reduce development time

RELATED PRODUCTS



Rabbit® SBC BL2100 Series



Rabbit® SBC BL2600 Series



Rabbit® SBC BL4S200 Series

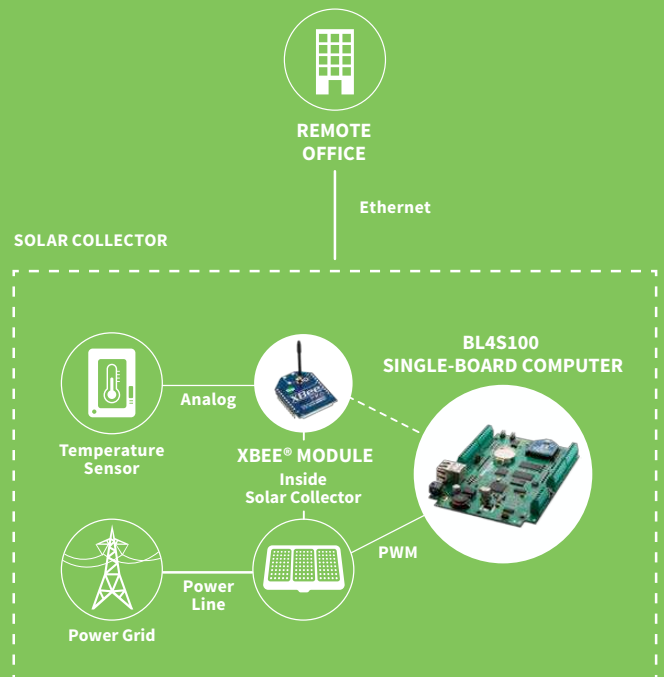


Rabbit RIO Programmable I/O Application Kit



Dynamic C®

APPLICATION EXAMPLE

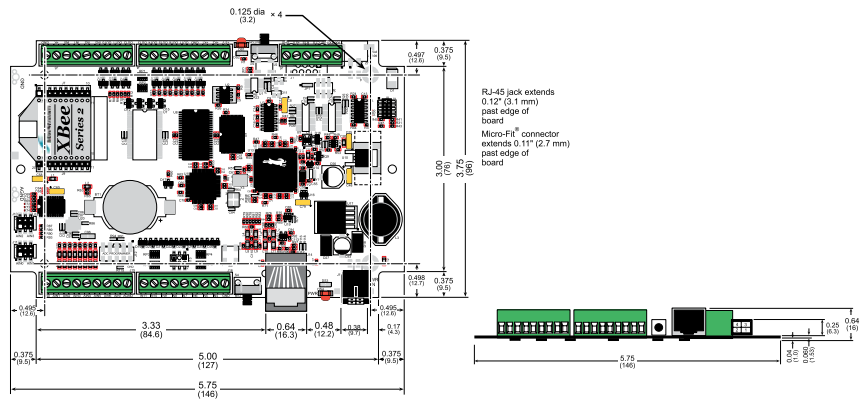


| SPECIFICATIONS | BL4S110 | BL4S150 | BL4S160 |
|----------------|---------|---------|---------|
|----------------|---------|---------|---------|

| FEATURE | | | |
|-------------------------------|---|------------------------|-----|
| MICROPROCESSOR | Rabbit® 4000 at 40 MHz | | |
| ETHERNET INTERFACE | 10Base-T | | |
| ZIGBEE® INTERFACE | N/A | ZigBee PRO Feature Set | N/A |
| SERIAL FLASH MEMORY (PROGRAM) | 1 MB | 2 MB | |
| PROGRAM EXECUTION SRAM | 512 KB | 1 MB | |
| DATA SRAM | 512 KB | | |
| BACKUP BATTERY | Panasonic CR2032 or equivalent 3V lithium coin type, 235 mA·h standard, socket-mounted | | |
| DIGITAL INPUTS | 12: protected to ±36 VDC, switching threshold 1.4 V/1.9V typical | | |
| DIGITAL OUTPUTS | 8: sink up to 200 mA each, 36 VDC max | | |
| ANALOG INPUTS | Eight 11-bit res. channels, software-selectable ranges unipolar: 1, 2, 2.5, 5, 10, 20VDC 4 channels can be hardware-configured for 4–20 mA; 1 MΩ input impedance, up to 4,100 samples/s | | |
| SERIAL PORTS | 3 serial ports: • 2 RS-232 or 1 RS-232 (with CTS/RTS) • 1 serial port dedicated for programming/debug | | |
| SERIAL RATE | Max. asynchronous rate = CLK/8, Max. synchronous rate = CLK/2 | | |
| HARDWARE CONNECTORS | Micro-Fit® connector: 1 polarized 2 × 2 with 3 mm pitch (power); Screw-terminal connectors (accept up to 14 AWG/1.5 mm ² wire): four 1 × 9 (I/O), one 1 × 6 (serial); Programming port: 2 × 5 IDC, 1.27 mm pitch | | |
| ETHERNET NETWORK CONNECTOR | 1 RJ-45 Ethernet | | |
| REAL-TIME CLOCK | Yes | | |
| TIMERS | Ten 8-bit timers (6 cascable, 3 reserved for internal peripherals), one 10-bit timer with 2 match registers | | |
| WATCHDOG/SUPERVISOR | Yes | | |
| POWER | 9–36 VDC, 2 W max. | | |
| OPERATING TEMPERATURE | -40° C to +85° C | | |
| HUMIDITY | 5–95%, non-condensing | | |
| BOARD SIZE | 3.75" × 5.75" × 0.64" (96 mm × 146 mm × 16 mm) | | |
| ZIGBEE RF MODULE | | | |
| RF MODULE | Digi XBee® ZB (ZigBee Pro Feature Det) | | |
| SECURITY | AES Encryption | | |
| RF DATA RATE | 250 Kbps | | |



Plastic enclosure: Part number 101-1279
The plastic enclosure, consisting of a base and a cover, provides a secure way to protect your BL4S100 series single-board computer.



| PART NUMBERS | DESCRIPTION |
|--------------|-------------------------|
| 101-1268 | BL4S100 Series Tool Kit |
| 20-101-1256 | BL4S110 512K |
| 20-101-1258 | BL4S160 1M |

DIGI SERVICE AND SUPPORT / You can purchase with confidence knowing that Digi is always available to serve you with expert technical support and our industry leading warranty. For detailed information visit www.digi.com/support.

© 1996-2016 Digi International Inc. All rights reserved.
All trademarks are the property of their respective owners.

DIGI INTERNATIONAL WORLDWIDE HQ
877-912-3444 / 952-912-3444 / www.digi.com

DIGI INTERNATIONAL FRANCE
+33-1-55-61-98-98 / www.digi.fr

DIGI INTERNATIONAL JAPAN
+81-3-5428-0261 / www.digi-intl.co.jp

DIGI INTERNATIONAL SINGAPORE
+65-6213-5380

DIGI INTERNATIONAL CHINA
+86-21-50492199 / www.digi.com.cn

