



Chipsmall Limited consists of a professional team with an average of over 10 year of expertise in the distribution of electronic components. Based in Hongkong, we have already established firm and mutual-benefit business relationships with customers from,Europe,America and south Asia,supplying obsolete and hard-to-find components to meet their specific needs.

With the principle of "Quality Parts,Customers Priority,Honest Operation,and Considerate Service",our business mainly focus on the distribution of electronic components. Line cards we deal with include Microchip,ALPS,ROHM,Xilinx,Pulse,ON,Everlight and Freescale. Main products comprise IC,Modules,Potentiometer,IC Socket,Relay,Connector.Our parts cover such applications as commercial,industrial, and automotives areas.

We are looking forward to setting up business relationship with you and hope to provide you with the best service and solution. Let us make a better world for our industry!



## Contact us

Tel: +86-755-8981 8866 Fax: +86-755-8427 6832

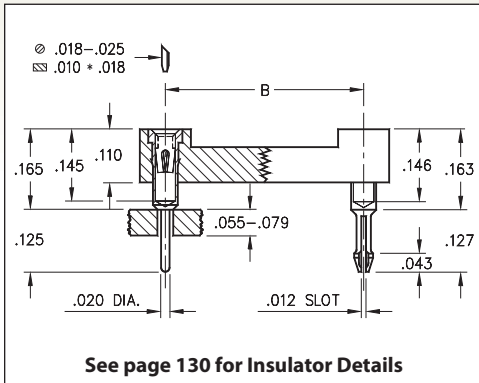
Email & Skype: info@chipsmall.com Web: www.chipsmall.com

Address: A1208, Overseas Decoration Building, #122 Zhenhua RD., Futian, Shenzhen, China

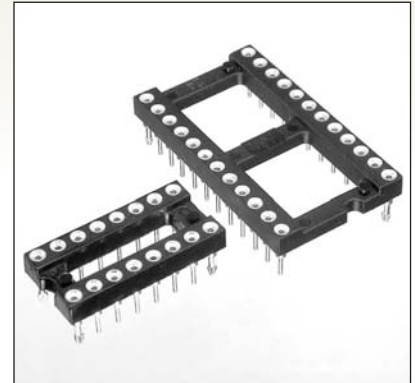


# DUAL-IN-LINE SOCKETS

## SERIES 101 • CLINCH PIN • OPEN FRAME



- Special lock-down feature prevents floating of socket during soldering. Open insulator with ladder construction
- Socket pins feature closed end construction eliminating any solder wicking problems
- Hi-Rel, 4-finger BeCu #30 contact is rated at 3 amps. See page 253 for details
- Series 101 uses MM #1001 and MM #0156 pins. See page 165 for details
- Insulators are high temperature thermoplastic, suitable for all soldering operations
- For Electrical, Mechanical and Environmental Data, see page 264 for details



## ORDERING INFORMATION

Total number of pins	Pin Configuration			Quantity per tube	Part Number
	A	B	C		
6	0.3	0.3	0.4	67	101-93-306-41-56X000
8	0.4	0.3	0.4	50	101-93-308-41-56X000
14	0.7	0.3	0.4	28	101-93-314-41-56X000
16	0.8	0.3	0.4	25	101-93-316-41-56X000
18	0.9	0.3	0.4	22	101-93-318-41-56X000
20	1.0	0.3	0.4	20	101-93-320-41-56X000
24	1.2	0.3	0.4	16	101-93-324-41-56X000
28	1.4	0.3	0.4	14	101-93-328-41-56X000
22	1.1	0.4	0.5	18	101-93-422-41-56X000
24	1.2	0.6	0.7	16	101-93-624-41-56X000
28	1.4	0.6	0.7	14	101-93-628-41-56X000
32	1.6	0.6	0.7	12	101-93-632-41-56X000
40	2.0	0.6	0.7	10	101-93-640-41-56X000
48	2.4	0.6	0.7	8	101-93-648-41-56X000
64	3.2	0.9	1.0	6	101-93-964-41-56X000

**Clinch Pins:**

Two Opposite Corner Pins **X = 0**

Four Corner Pins **X = 8**

XX=Plating Code  
See Below



SPECIFY PLATING CODE XX =		93				
Sleeve (Pin)		200 μ" Sn/Pb				
Contact (Clip)		30 μ" Au				

