



Chipsmall Limited consists of a professional team with an average of over 10 year of expertise in the distribution of electronic components. Based in Hongkong, we have already established firm and mutual-benefit business relationships with customers from,Europe,America and south Asia,supplying obsolete and hard-to-find components to meet their specific needs.

With the principle of “Quality Parts,Customers Priority,Honest Operation,and Considerate Service”,our business mainly focus on the distribution of electronic components. Line cards we deal with include Microchip,ALPS,ROHM,Xilinx,Pulse,ON,Everlight and Freescale. Main products comprise IC,Modules,Potentiometer,IC Socket,Relay,Connector.Our parts cover such applications as commercial,industrial, and automotives areas.

We are looking forward to setting up business relationship with you and hope to provide you with the best service and solution. Let us make a better world for our industry!



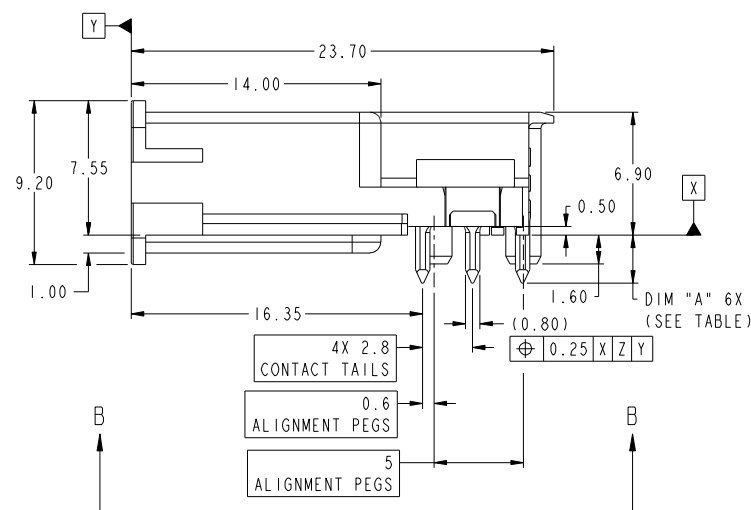
Contact us

Tel: +86-755-8981 8866 Fax: +86-755-8427 6832

Email & Skype: info@chipsmall.com Web: www.chipsmall.com

Address: A1208, Overseas Decoration Building, #122 Zhenhua RD., Futian, Shenzhen, China

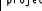
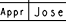




PART NUMBER	DIM "A"	PCB THICKNESS	CONTACT FINISH
10101229-101LF	2.6	1.6-2.4mm $\pm 10\%$	NOTE 4
10101229-201LF	2.6	1.6-2.4mm $\pm 10\%$	Sn over Ni
10101229-102LF	3.4	3.2mm $\pm 10\%$	NOTE 4
10101229-202LF	3.4	3.2mm $\pm 10\%$	Sn over Ni

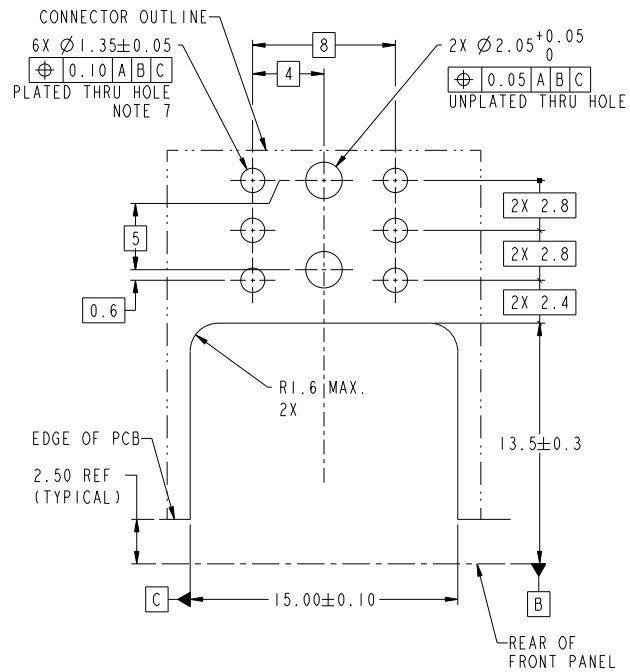
NOTES:

- NOTES:
- 1 - HOUSING MATERIAL: HIGH TEMPERATURE GLASS FILLED THERMOPLASTIC, UL 94 V-0
POWER CONTACT MATERIAL: COPPER ALLOY
 - 2 - CONNECTOR CAN BE PICKED UP WITH A VACUUM NOZZLE DIAMETER UP TO 8 MM.
ESTIMATED MASS OF THE PRODUCT IS 2.2 GRAM.
 - 3 - PRODUCT SPECIFICATION: GS-12-589
 - 4 - FOR THIS DASH NUMBER, THE SEPARABLE INTERFACE INCLUDES 0.76 UM OF PERFORMANCE-BASED
PLATING QUALIFIED TO MEET THE REQUIREMENTS OF FCI PRODUCT SPECIFICATION GS-12-589
 - ⑤ - PRODUCT MARKING, (PART NUMBER & LOT CODE) ON THIS SURFACE.
 - 6 - MATES WITH PWR PROFILE(TM) CABLE ASSEMBLY (P/N: 10076440/10090232/10090233)
 - ⑦ - HOLE DIAMETER INCLUDES Cu PLATING

www.fciconnect.com				surface <input checked="" type="checkbox"/> tolerance std		projection 		MM	
				TOLERANCES UNLESS OTHERWISE SPECIFIED					
Dr Warren Du 2009-05-11				ANGULAR		0.x ± 0.5		size	
Eng Warren Du 2009-05-11				LINEAR		0.xx ± 0.25		A2	
Chr PM ZHENG 2009-05-11				0° ± "		0.xxx ± 0.10		ECN -	
Appr JOSH Hsia 2009-05-11				Product family		PwrProfile		Spec ref	
				title R/A Header, PIP		drg no 10101229		REV	
				PWR PROFILE, 20 AMP				C	
				catalog no		Customer		sheet 1 of 3	

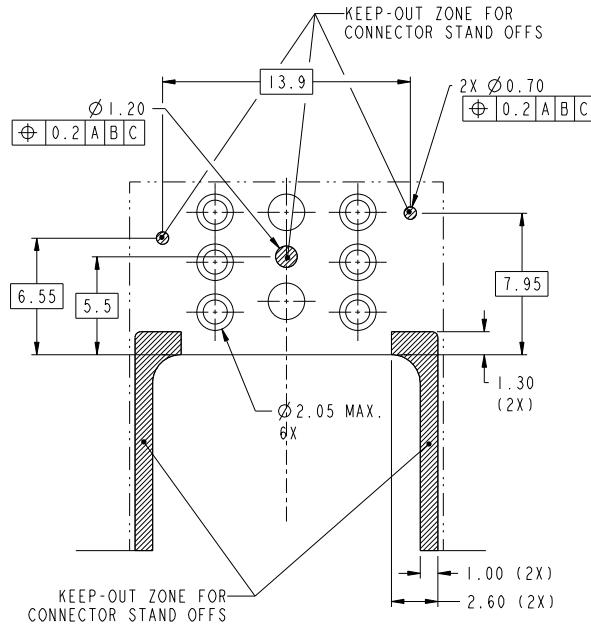
PCB LAYOUT: HOLE PATTERN

PCB THICKNESS: SEE TABLE ON SHEET 1



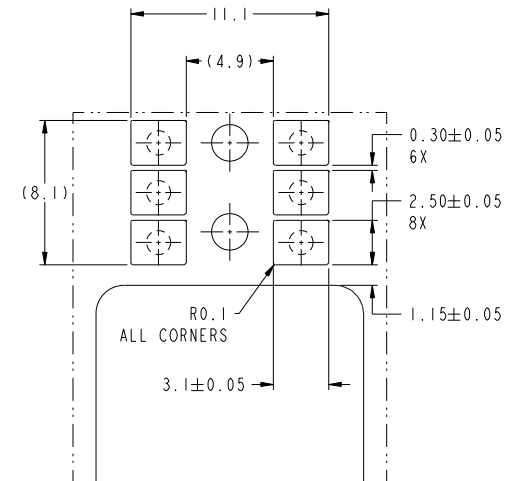
PCB LAYOUT: PLATING

PLATING THICKNESS MUST BE CONSTANT
OVER THE CONNECTOR AREA

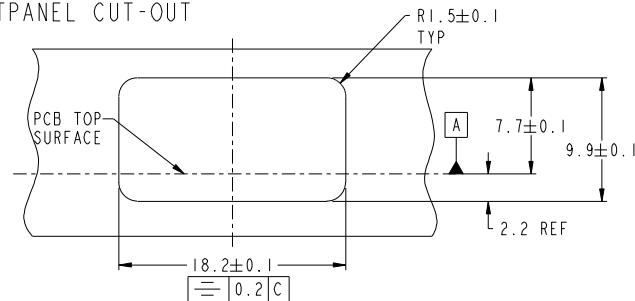


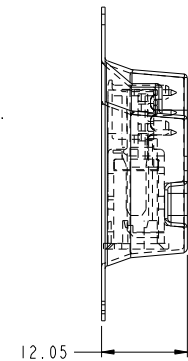
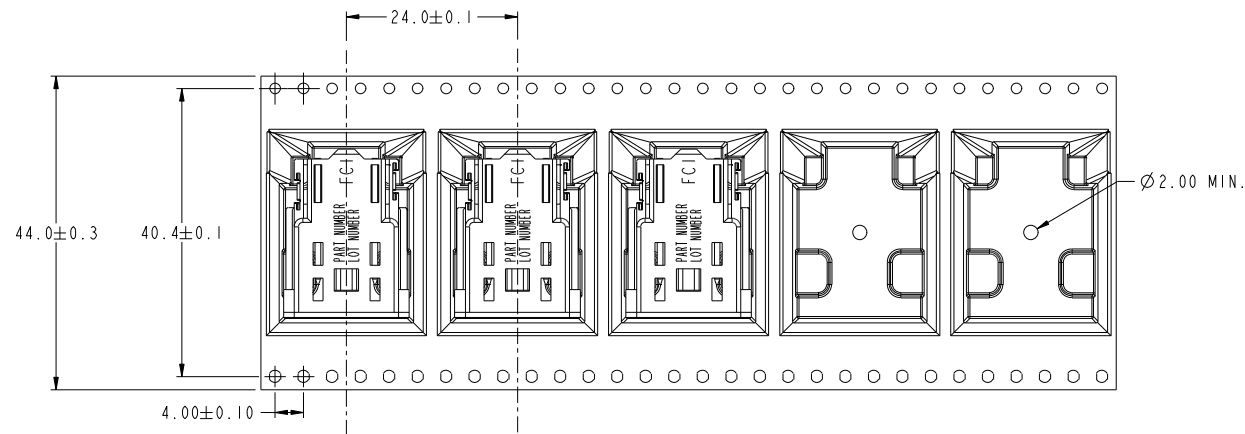
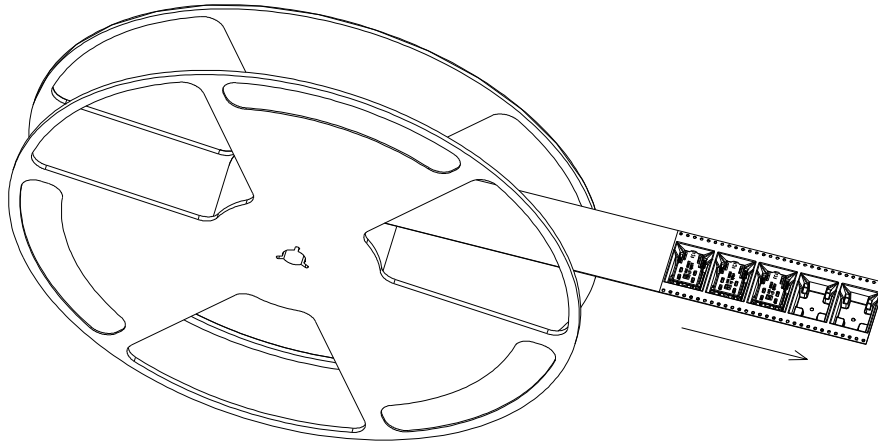
PCB LAYOUT: SOLDER PASTE

RECOMMENDED STENCIL LAYOUT WITH MIN. REQUIRED APERTURES
FOR 0.1MM ASSUMED STENCIL THICKNESS (ABOVE COPPER TRACKS)
AND 1.6 TO 2.4MM NOMINAL THICKNESS.
THE SOLDER CONTENT IN THE PASTE SHOULD BE SUFFICIENT,
TYPICALLY 50% VOLUME PERCENTAGE.
THE SCREEN PRINTING PROCESS (ANGLE, SPEED, PRESSURE,
MATERIALS AND NUMBER OF CYCLES) MUST BE OPTIMIZED SO
THAT SUFFICIENT SOLDER IS AVAILABLE.



RECOMMENDED FRONTPANEL CUT-OUT





USER DIRECTION OF FEED

NOTE:
1: MATERIAL CARRIER TAPE: POLYSTYRENE;
2: MATERIAL COVER TAPE: POLYESTER;
3: THE PACKAGING IS ANTISTATIC TREATED.

Copyright FCI.



R/A Header, PIP
PWR PROFILE, 20 AMP
catalog no

10101229

Rev.
C

sheet 3 of 3

PDM: Rev:C

STATUS Released

Printed: Oct 27, 2010