



Chipsmall Limited consists of a professional team with an average of over 10 year of expertise in the distribution of electronic components. Based in Hongkong, we have already established firm and mutual-benefit business relationships with customers from,Europe,America and south Asia,supplying obsolete and hard-to-find components to meet their specific needs.

With the principle of "Quality Parts,Customers Priority,Honest Operation,and Considerate Service",our business mainly focus on the distribution of electronic components. Line cards we deal with include Microchip,ALPS,ROHM,Xilinx,Pulse,ON,Everlight and Freescale. Main products comprise IC,Modules,Potentiometer,IC Socket,Relay,Connector.Our parts cover such applications as commercial,industrial, and automotives areas.

We are looking forward to setting up business relationship with you and hope to provide you with the best service and solution. Let us make a better world for our industry!



## Contact us

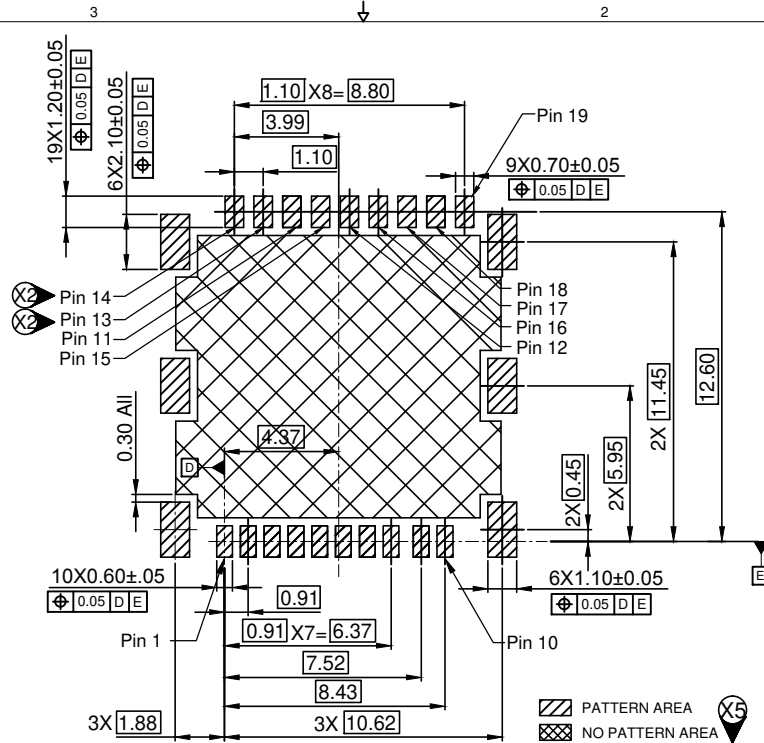
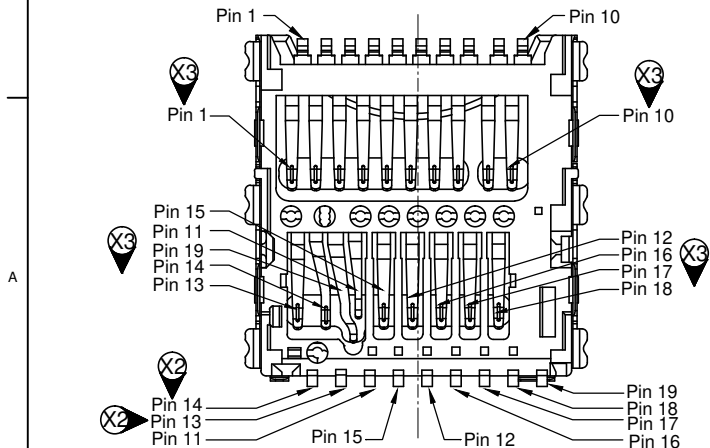
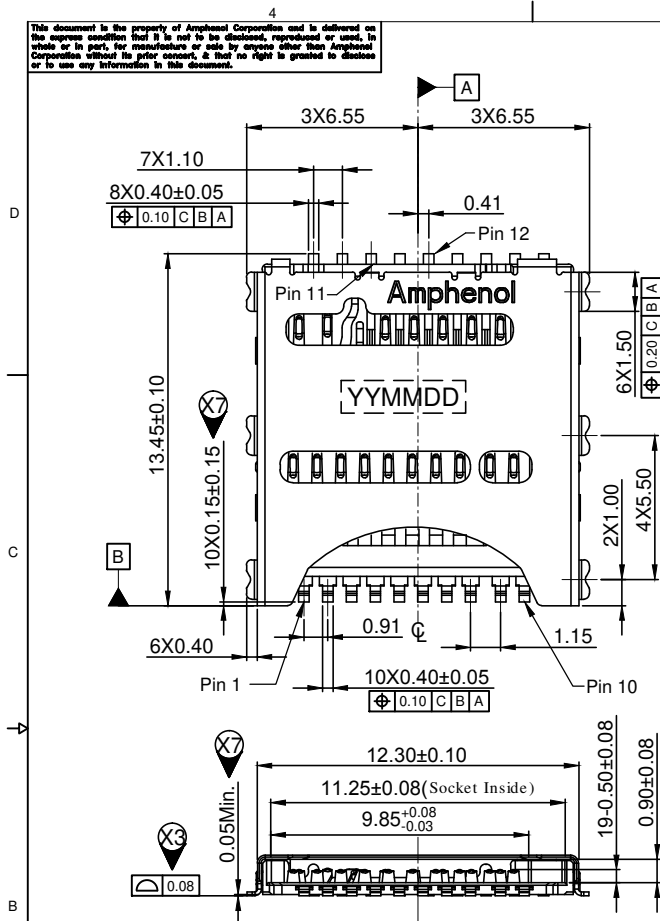
Tel: +86-755-8981 8866 Fax: +86-755-8427 6832

Email & Skype: info@chipsmall.com Web: www.chipsmall.com

Address: A1208, Overseas Decoration Building, #122 Zhenhua RD., Futian, Shenzhen, China

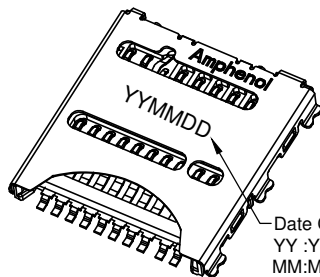
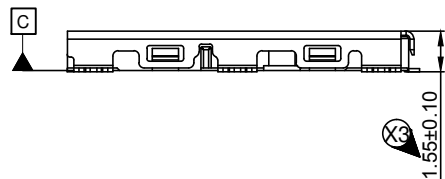


This document is the property of Amphenol Corporation and is delivered on the express condition that it is not to be disclosed, reproduced or used, in whole or in part, for manufacture or sale by anyone other than Amphenol Corporation without its prior consent, & that no right is granted to disclose or to use any information in this document.



Recommended PCB Layout (Top View) / 推荐的PCB布局 (前视图)

General Tolerances: ±0.05 / 一般公差: ±0.05



Date Code:  
YY :Year  
MM:Month  
DD:Day



REVISIONS				
SYM	ECN	DESCRIPTION	DATE	APPROVED
X3	XX	sheet 1:change from Coplanarity 0.10mm to 0.08mm sheet 1&2: Increases Pin Number Indicate	05/30/16	Tom
X4	XX	sheet 1: Add Finish J6 options	07/12/16	Tom
X5	XX	sheet 1:Add PCB No Pattern area	08/03/16	Tom
X6	XX	sheet 2:Add Card inserted circuit mapping	08/19/16	Tom
X7	XX	sheet 1:Modify tolerance	09/07/16	Tom

Notes/备注:

1. Material / 材质:

1.1. Housing (塑胶): High Temperature (高温料) UL-V0  
Color (颜色): Black (黑色)

1.2. Terminal (端子): Corson Alloy (铜镍硅合金).

1.3. Shell (铁壳): Stainless Steel (不锈钢).

2. Finish / 电镀:

2.1. Terminal: See Part Number Description on Contact Area plating  
Au 2u" Min. on Soldering Area Plating Nickel 50~200u" Under Plating Over All

(端子: 接触区域镀金见料号编码原则, 焊接区域镀金 2u" Min., 全区镀镍底 50~200u")

2.2. Shell: Nickel 50~200u" Plating Over All.  
(全部镀镍 50~200u")

3. Specification / 规格:

3.1. Electrical Characteristics / 电气特性:

3.1.0. Contact Resistance (接触阻抗): 100mΩ Max.

3.1.1. Dielectric Withstanding Voltage (耐电压): 500VAC Max With 1 Minute

3.1.2. Insulation Resistance (绝缘阻抗): 1000 MΩ Min.

3.1.3. Current Rating (额定电流): 0.5A AC/DC Max.  
Rated Voltage (额定电压): 100 V RMS Min.

3.2.3. Operating Temperature (工作温度): -25°C ~ +85°C

3.2.4. Storage Temperature (储存温度): -40°C ~ +85°C

PART NUMBER DESCRIPTION

1 0 1 0 1 7 0 4 X X X X X

Finish:

- 64 : Au 1u"
- 65 : Au 3u"
- 66 : Au 5u"
- 67 : Au 10u"
- 68 : Au 15u"
- 69 : Au 30u"

ROHS:

A: HF

Packing:

2: Tape & Reel

Date Code:

#: With Date Code

X4 J6 : Pd-Ni 12u" + Au2u"

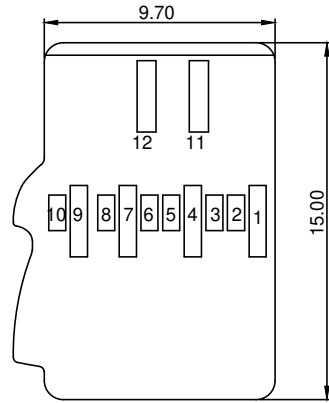
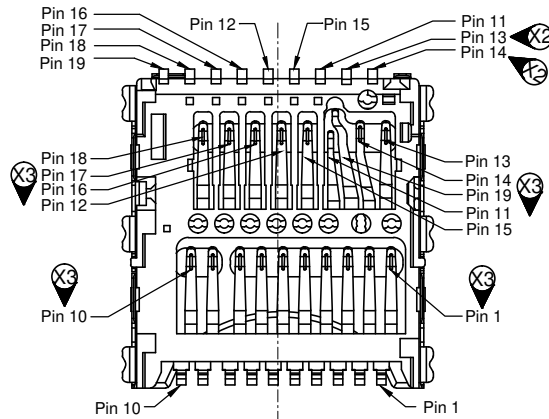
UNLESS OTHERWISE SPECIFIED TOLERANCES		APPROVAL	DATE	Amphenol
	U.S. METRIC	DRAWN Allan.Lal	08/19/16	
.X	+/-	CHECKED Welson.lu <td>08/19/16 <td rowspan="2">TITLE UFS CARD SOCKET</td> </td>	08/19/16 <td rowspan="2">TITLE UFS CARD SOCKET</td>	TITLE UFS CARD SOCKET
.XX	+/-	CHECKED		
FRACTIONS +/-		DRAWING FILE :		SIZE DRAWING NO. A3 10101704XXXXX
ANGLES +/-		RD 工程图/高品研		
FOR MATERIALS AND FINISHES SEE NOTES		REMOVE SHARP EDGES		SCALE NONE SHEET 1 OF 2
DIMENSIONS		ANGLE OF PROJECTION		
U.S.	INCHES			
METRIC	MM			

This document is the property of Amphenol Corporation and is delivered on the express condition that it is not to be disclosed, reproduced or used, in whole or in part, for manufacture or sale by anyone other than Amphenol Corporation without its prior consent, & that no right is granted to disclose or to use any information in this document.

### UFS Card Use (UFS卡使用)

UFS Card Pin Function Definition:  
(UFS卡Pin功能定义)

PIN NO.	FUNCTION
Pin 1	VSS
Pin 2	DIN_C
Pin 3	DIN_T
Pin 4	VSS
Pin 5	DOOUT_C
Pin 6	DOOUT_T
Pin 7	VSS
Pin 8	REF_CLK
Pin 9	VCCQ2
Pin 10	C/D(GND)
Pin 11	VSS
Pin 12	VCC



Circuit Mapping Table:  
(电路对照表)

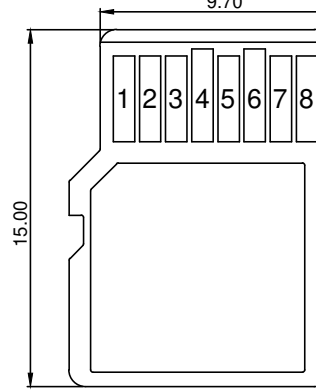
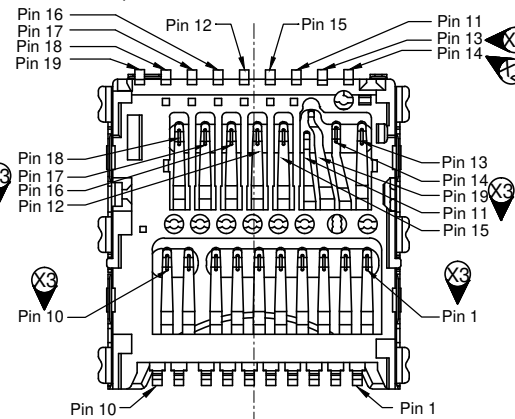
UFS Card	UFS Socket
Pin 1	Pin 1
Pin 2	Pin 2
Pin 3	Pin 3
Pin 4	Pin 4
Pin 5	Pin 5
Pin 6	Pin 6
Pin 7	Pin 7
Pin 8	Pin 8
Pin 9	Pin 9
Pin 10	Pin 10
Pin 11	Pin 11
Pin 12	Pin 12

Without the card (无卡)

UFS Card	UFS Socket
Pin 1	Pin 1
Pin 2	Pin 2
Pin 3	Pin 3
Pin 4	Pin 4
Pin 5	Pin 5
Pin 6	Pin 6
Pin 7	Pin 7
Pin 8	Pin 8
Pin 9	Pin 9
Pin 10	Pin 10
Pin 11	Pin 11
Pin 12	Pin 12

Card inserted(卡插入)

### Compatible With Micro SD Card (兼容微型内存卡)



Micro SD Card

Micro SD Card Pin Function Definition:  
(微型内存卡Pin功能定义)

PIN NO.	FUNCTION
1	DATA LINE(BIT 2)
2	CARD DETECT/DATA LINE(BIT 3)
3	COMMAND RESPONSE
4	SUPPLY VOLTAGE
5	CLOCK
6	SUPPLY VOLTAGE GROUND
7	DATA LINE(BIT 0)
8	DATA LINE(BIT 1)

Circuit Mapping Table:  
(电路对照表)

Micro SD Card	UFS Socket
Pin 1	Pin 18
Pin 2	Pin 17
Pin 3	Pin 16
Pin 4	Pin 12
Pin 5	Pin 15
Pin 6	Pin 11
Pin 7	Pin 13
Pin 8	Pin 14

Without the card (无卡)

Micro SD Card	UFS Socket
Pin 1	Pin 18
Pin 2	Pin 17
Pin 3	Pin 16
Pin 4	Pin 12
Pin 5	Pin 15
Pin 6	Pin 11
Pin 7	Pin 13
Pin 8	Pin 14

Card inserted(卡插入)

UNLESS OTHERWISE SPECIFIED TOLERANCES		APPROVAL	DATE
	U.S. METRIC	DRAWN Allan.Lal	08/19/18
.X +/-	±0.15	CHECKED Welson.lu	08/19/18
.XX +/-	±0.10	CHECKED	
FRACTIONS +/-	±1.0°	DRAWING FILE :	
ANGLES +/-		RD 工程图(品质部)	
REMOVE SHARP EDGES		ANGLE OF PROJECTION	
DIMENSIONS			
U.S.	INCHES	SIZE	DRAWING NO.
(METRIC)	(MM)	A3	10101704XXXXX
		SCALE	NONE
		SHEET 2 OF 2	

Amphenol

UFS CARD SOCKET

REV. X7

