



Chipsmall Limited consists of a professional team with an average of over 10 year of expertise in the distribution of electronic components. Based in Hongkong, we have already established firm and mutual-benefit business relationships with customers from,Europe,America and south Asia,supplying obsolete and hard-to-find components to meet their specific needs.

With the principle of “Quality Parts,Customers Priority,Honest Operation,and Considerate Service”,our business mainly focus on the distribution of electronic components. Line cards we deal with include Microchip,ALPS,ROHM,Xilinx,Pulse,ON,Everlight and Freescale. Main products comprise IC,Modules,Potentiometer,IC Socket,Relay,Connector.Our parts cover such applications as commercial,industrial, and automotives areas.

We are looking forward to setting up business relationship with you and hope to provide you with the best service and solution. Let us make a better world for our industry!



Contact us

Tel: +86-755-8981 8866 Fax: +86-755-8427 6832

Email & Skype: info@chipsmall.com Web: www.chipsmall.com

Address: A1208, Overseas Decoration Building, #122 Zhenhua RD., Futian, Shenzhen, China



10112690 - X XX-YY Z LF

INDICATES THAT PRODUCT IS RoHS COMPATIBLE SEE NOTE 3

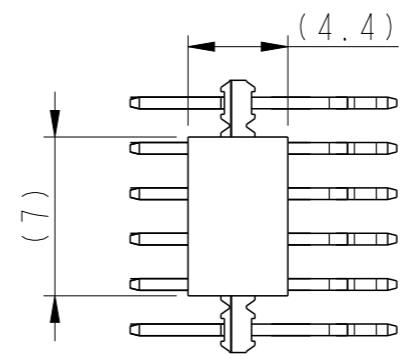
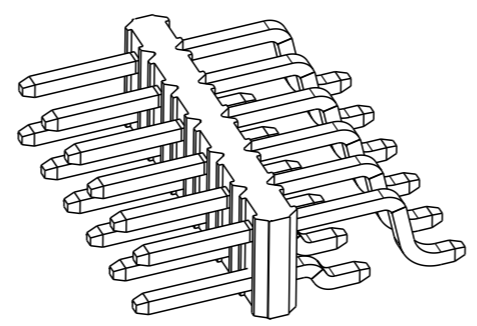
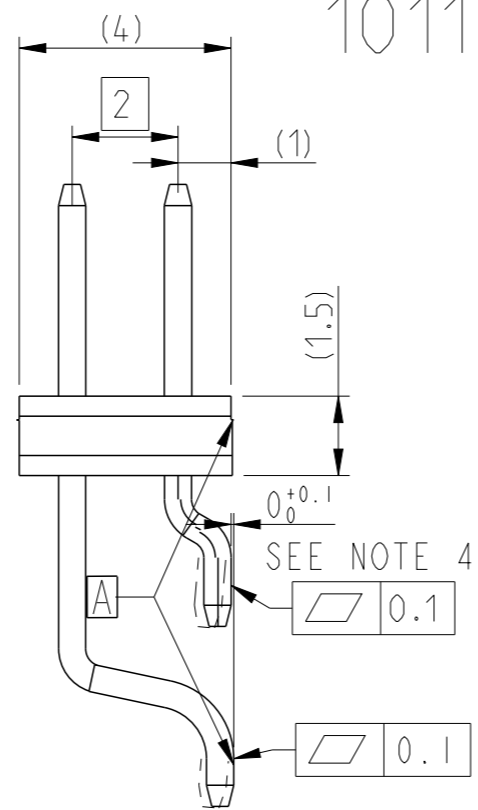
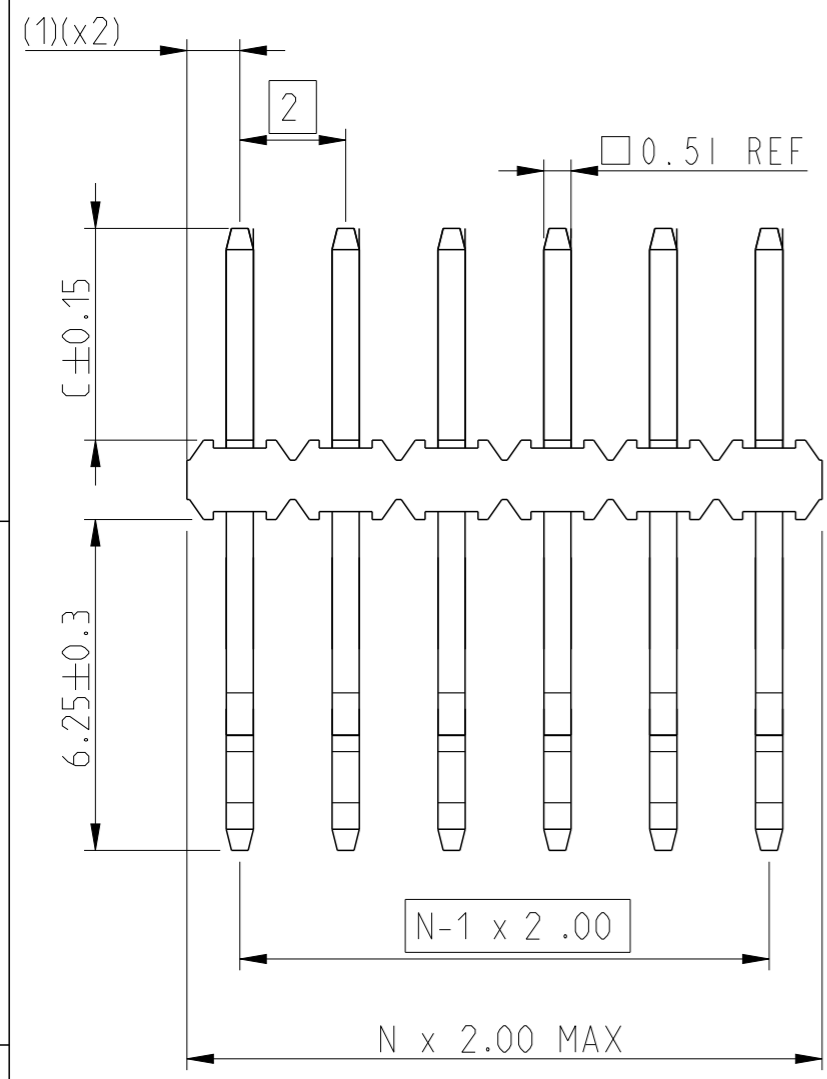
PACKAGING :

- A = Tape and reel with Pick-up cap See GS-14-1516 As available
- U = Tube without Pick-up cap. Only for rows contacts qty from 4 to 25 See GS-14-1551
- Blank = Bli box for rows contacts qty 2 and 3 see note 5

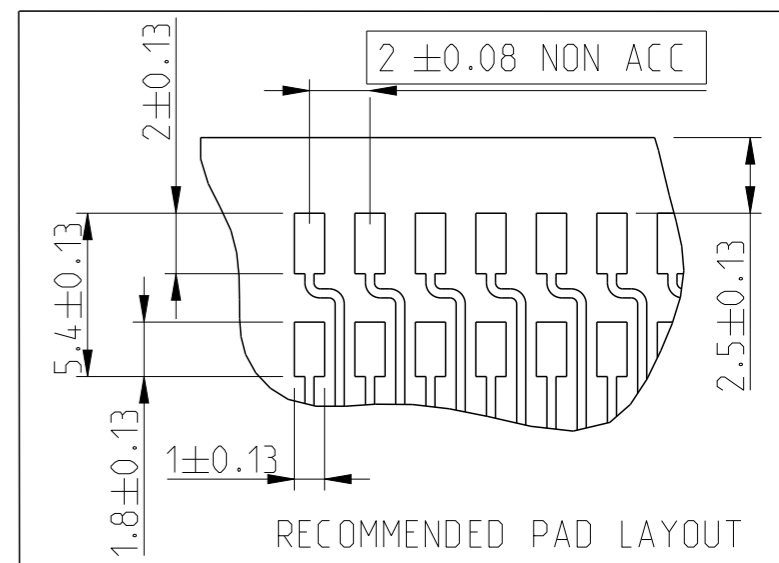
NBR CONTACTS PER ROW : 02 TO 25 = N

STYLE	01	02	03	04	05
DIM C	3.2	2.0	4.0	7.0	5.84
POST LENGTH					

PLATING : G= 0.76µ Gold/GXT on mating area
 2-6µ Pure Tin on solder area
 F= Gold flash on mating area
 2-6µ pure Tin on solder area
 T= 2-6µ pure Tin on mating area
 2-6µ pure Tin on solder area
 All with 1.27 Ni underplating



SCALE 3:1
VIEW WITH PICK-UP CAP



- NOTES :**
- 1- MATERIALS :
 BODY : High Temp thermoplastic 30% GF, COLOR BLACK UL94 V-0
 PIN : COPPER ALLOY
 - 2- 7N MIN PIN RETENTION IN EITHER DIRECTION
 - 3- RoHS COMPATIBLE PRODUCT SPECIFICATION :
 a- PLATING : LF means the product is Lead Free,
 2µ MIN matte Tin over 1.27µ Nickel underplating.
 b- MANUFACTURING PRODUCT SPECIFICATION :
 Housing will withstand exposure to 260°C peak temperature for 30 secondes in a convection infra-red or vapor phase oven.
 c- LABELLING :
 Meets packaging specs as per GS-14-920
 d- LEGAL STATMENT : See GS-47-0004
 - 4- PLANE REFERENCE -A- IS GENERATED BY LONG PINS TAIL ROW WITH LOWEST AREA OF BODY.
 SHORT PINS ROW TO BE FLUSH OR HIGHER 0.1 MAX ABOVE REF -A-.
 - 5- MINIMUM QUANTITY IN BLI BOX : 500

spec ref	GS-12-652	dr	A Parrenin	2014/02/28
tolerance std	ISO 406 ISO 1101	eng	A Parrenin	2014/03/19
surface	linear	chr	D Convercey	2014/03/20
		appr	Gert Drosbeke	2014/03/21
	angular	0°	±/°	

projection	mm	size	A3	scale	4:1
product family	HEADER UNSHROUDED SMT	ecn no	ELX-B-17245-1	rel level	Released
cat. no.	10112690C	dwg no	10112690C	rev	E
Product - Customer Drw	sheet 1 of 1				



Copyright FCI.