



Chipsmall Limited consists of a professional team with an average of over 10 year of expertise in the distribution of electronic components. Based in Hongkong, we have already established firm and mutual-benefit business relationships with customers from,Europe,America and south Asia,supplying obsolete and hard-to-find components to meet their specific needs.

With the principle of “Quality Parts,Customers Priority,Honest Operation,and Considerate Service”,our business mainly focus on the distribution of electronic components. Line cards we deal with include Microchip,ALPS,ROHM,Xilinx,Pulse,ON,Everlight and Freescale. Main products comprise IC,Modules,Potentiometer,IC Socket,Relay,Connector.Our parts cover such applications as commercial,industrial, and automotives areas.

We are looking forward to setting up business relationship with you and hope to provide you with the best service and solution. Let us make a better world for our industry!



## Contact us

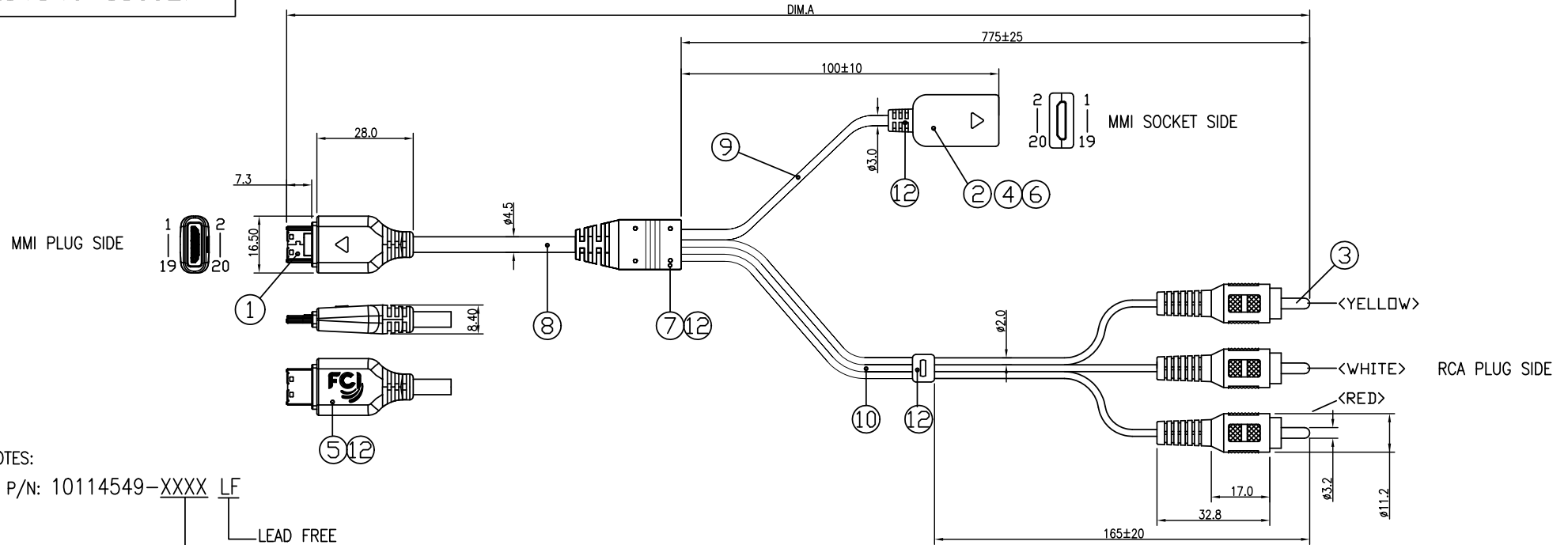
Tel: +86-755-8981 8866 Fax: +86-755-8427 6832

Email & Skype: [info@chipsmall.com](mailto:info@chipsmall.com) Web: [www.chipsmall.com](http://www.chipsmall.com)

Address: A1208, Overseas Decoration Building, #122 Zhenhua RD., Futian, Shenzhen, China



10114549-1500LF



#### NOTES:

1. P/N: 10114549-XXXX LF

LEAD FREE

LENGTH CODE (UNIT : mm)

1500 - DIM. A: 1500±50mm

#### 2. MATERIALS

- ① MMI PLUG: 20PIN PLUG WITH SHELL COVER
- ② MMI SOCKET: 20PIN SOCKET WITH SHELL COVER, REVERSE TYPE.
- ③ RCA PLUG(Y/W/R): RCA PLUG, GOLD PLATING Ø8.2MM, COLOR: YELLOW,WHITE,RED.
- ④ CASE UPPER/LOWER: MATERIAL ABS, WHITE.
- ⑤ PCB IN PLUG: PADDLE CARD, MATERIAL FR4, 0.8MM THICKNESS.
- ⑥ PCB IN SOCKET: PADDLE CARD, MATERIAL FR4, 0.8MM THICKNESS.
- ⑦ PCB IN CENTER: PADDLE CARD, MATERIAL FR4, 0.8MM THICKNESS.
- ⑧ CABLE OF 20PIN MMI PLUG SIDE: 24AWG\*2C, 28AWG\*5C, Ø4.5mm, JACKET COLOR: WHITE.
- ⑨ CABLE OF 20PIN MMI SOCKET SIDE: 42AWG\*2C, Ø3.0mm, JACKET COLOR: WHITE.
- ⑩ CABLE OF VIDEO RCA PLUG SIDE: 30AWG\*3C, Ø2.0mm FOR 1C, JACKET COLOR: WHITE.
- ⑪ MOLD: PE FOR INNERMOLD & 50P PVC FOR OVERMOLD, COLOR: WHITE.

3. PRODUCT SPEC:GS-12-656; PACKING SPEC: GS-14-1485

4. THE PRODUCT IS NOT INTENDED TO EXPOSED

TO A MANUFACTURING SOLDER PROCESS

5. ALL CABLE ASSEMBLIES SHALL BE TESTED 100%

FOR CONTINUITY AS DEFINED IN WIRING LIST

CONDUCTOR RESISTOR:≤3.0 OHM; INSULATION RESISTOR:≥10M OHM

HIPOT TESTING: 300V DC, 0.01S.


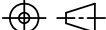

6. PRODUCT COMPLY WITH ROHS ENVIREMENT STANDARD.

SIX HAZARD SUBSTANCES MUST BE CONTROLLED AS FOLLOW:

Cd<1000ppm; Pb Hg Cr6+ PBBB, PBDE<1000ppm.

#### \* PIN ASSIGNMENT

| No. | 20Pin MMI Plug |              |              | 20Pin MMI Socket |              |              | RCA (VIDEO) PLUG |        |
|-----|----------------|--------------|--------------|------------------|--------------|--------------|------------------|--------|
|     | Pin No.        | Wire         | Color        | Pin No.          | Wire         | Color        | Color            | Wire   |
| 1   | 2,12           | 24AWG        | RED          | 2,12             | 24AWG        | RED          | —                | —      |
| 2   | 9,10           | 24AWG        | GREEN        | 9,10             | 24AWG        | GREEN        | —                | —      |
| 3   | 14             | 28AWG        | YELLOW       | —                | —            | —            | YELLOW           | 30AWG  |
| 4   | 5              | 28AWG        | WHITE        | —                | —            | —            | WHITE            | 30AWG  |
| 5   | 6              | 28AWG        | RED          | —                | —            | —            | RED              | 30AWG  |
| 6   | 1,20, SHELL    | 24AWG SHIELD | BLACK SHIELD | 1,20, SHELL      | 24AWG SHIELD | BLACK SHIELD | SHIELD           | SHIELD |

|                |                   |       |          |  |              |          |  |   |   |   |  |        |      |     |          |  |  |                 |  |
|----------------|-------------------|-------|----------|--|--------------|----------|--|---|---|---|--|--------|------|-----|----------|--|--|-----------------|--|
| mat'l. code    |                   |       |          | tolerances unless<br>otherwise specified |              |          |  | CUSTOMER<br>COPY  |   | <br><br>www.fciconnect.com |  |        |      |     |          |  |  |                 |  |
| ltr            | ecn no            | dr    | date     | linear                                   | .X ± 0.35    |          |  |   | projection<br> | title<br><br>MMI TO TV CABLE ASSEMBLY   |  |        |      |     |          |  |  |                 |  |
| 1              | P10-0008          | Jerry | 06/10/10 |  | .XX ± 0.10   |          |  |   |   |   |  |        |      |     |          |  |  |                 |  |
| 2              | P10-0011          | Jerry | 06/18/10 |  | .XXX ± 0.05  |          |  |   |   |   |  |        |      |     |          |  |  |                 |  |
|                |                   |       |          | angles<br>0° ± 2°                        |              |          |  |  | product family  |   |  | MMI    | code |     |          |  |  |                 |  |
|                |                   |       |          | dr                                       | Jerry Yi     | 06/18/10 |  |   | size  |   |  | dwg no |      | TWN |          |  |  |                 |  |
|                |                   |       |          | engr                                     | Jerry Yi     | 06/18/10 |  |   | scale<br>NA   |   |  | A4     |      |     | 10114549 |  |  | sheet<br>1 of 1 |  |
|                |                   |       |          | chr                                      | Roger cheng  | 06/18/10 |  |   |   |   |  |        |      |     |          |  |  |                 |  |
|                |                   |       |          | appd                                     | Jackson Wang | 06/18/10 |  |   |   |   |  |        |      |     |          |  |  |                 |  |
| sheet<br>index | revision<br>sheet |       | A        | B  |              |          |  |   |   |   |  |        |      |     |          |  |  |                 |  |
|                |                   |       | 1        | 1  |              |          |  |   |   |   |  |        |      |     |          |  |  |                 |  |