



Chipsmall Limited consists of a professional team with an average of over 10 year of expertise in the distribution of electronic components. Based in Hongkong, we have already established firm and mutual-benefit business relationships with customers from,Europe,America and south Asia,supplying obsolete and hard-to-find components to meet their specific needs.

With the principle of "Quality Parts,Customers Priority,Honest Operation,and Considerate Service",our business mainly focus on the distribution of electronic components. Line cards we deal with include Microchip,ALPS,ROHM,Xilinx,Pulse,ON,Everlight and Freescale. Main products comprise IC,Modules,Potentiometer,IC Socket,Relay,Connector.Our parts cover such applications as commercial,industrial, and automotives areas.

We are looking forward to setting up business relationship with you and hope to provide you with the best service and solution. Let us make a better world for our industry!



Contact us

Tel: +86-755-8981 8866 Fax: +86-755-8427 6832

Email & Skype: info@chipsmall.com Web: www.chipsmall.com

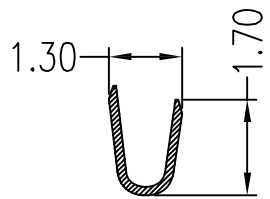
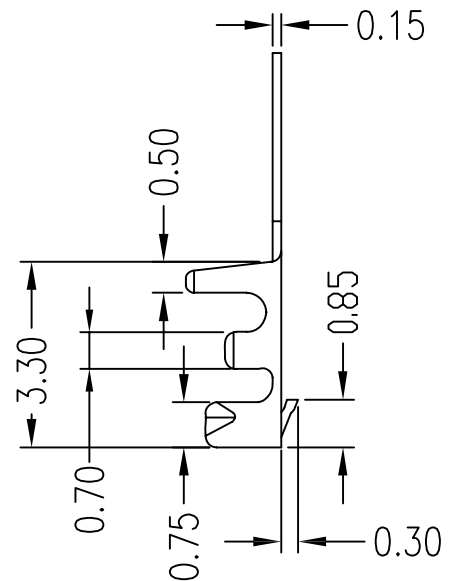
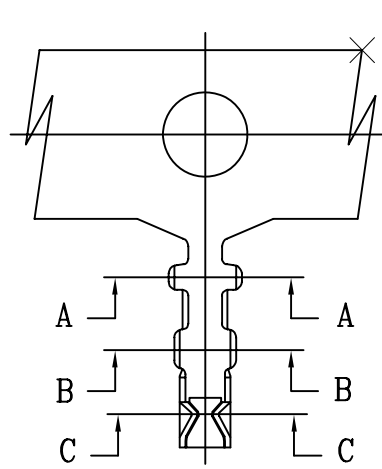
Address: A1208, Overseas Decoration Building, #122 Zhenhua RD., Futian, Shenzhen, China



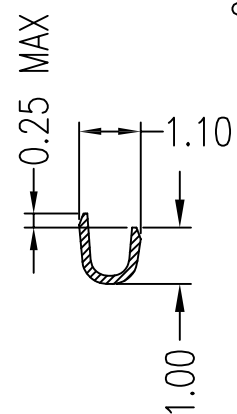


All rights strictly reserved. Reproduction or issue to third parties in any form whatever is not permitted without written authority from the proprietor. Property of FCI. Copyright FCI.

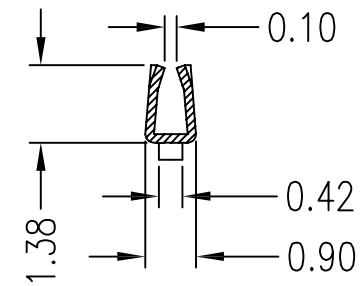
Tous droits strictement reserves. Reproduction ou communication a des tiers interdite sous quelque forme que ce soit sans autorisation ecrite du proprietaire. Propriete de c FCI. Droits de reproduction FCI.



SEC A-A



SEC B-B



SEC C-C

Notes:

1. Stamping before plating.
2. Mated with 10114826 housing.
3. Product numbering:

Part No	Wire Range	Insulation O.D.	Material	Finish	Qty/reel
10114827-001LF	AWG#28-#32	1.00mm(max)	Phosphor Bronze	Tin-plated	20,000pcs
10114827-002LF	AWG#28-#32	1.00mm(max)	Phosphor Bronze	Gold-flash	20,000pcs
10114827-003LF	AWG#28-#32	1.00mm(max)	Phosphor Bronze	Gold15u"	20,000pcs
10114827-004LF	AWG#28-#32	1.00mm(max)	Phosphor Bronze	Gold30u"	20,000pcs

mat'l. code				tolerances unless otherwise specified			CUSTOMER COPY		 www.fciconnect.com		
ltr	ecn no	dr	date	linear	.X ± 0.25		projection	title			
A	T10-0145	J H	12/1/10		.XX ± 0.15			WTB 1.25MM TERMINAL			
B	ELX-N-17283	TIM	03/24/14		.XXX ±			product family WTB			
				angles	0° ± 2'		 MM	code		TWN	
				dr	JASON HSU	12/1/10		size		dwg no	sheet
				engr	JASON HSU	12/1/10		A4		10114827	1 of 1
				chr	GARY HSIEH	12/1/10	scale				
				appd	JOSEPH HSIA	12/1/10	1:1				
sheet index	revision sheet	B	1								