



Chipsmall Limited consists of a professional team with an average of over 10 year of expertise in the distribution of electronic components. Based in Hongkong, we have already established firm and mutual-benefit business relationships with customers from,Europe,America and south Asia,supplying obsolete and hard-to-find components to meet their specific needs.

With the principle of “Quality Parts,Customers Priority,Honest Operation,and Considerate Service”,our business mainly focus on the distribution of electronic components. Line cards we deal with include Microchip,ALPS,ROHM,Xilinx,Pulse,ON,Everlight and Freescale. Main products comprise IC,Modules,Potentiometer,IC Socket,Relay,Connector.Our parts cover such applications as commercial,industrial, and automotives areas.

We are looking forward to setting up business relationship with you and hope to provide you with the best service and solution. Let us make a better world for our industry!



Contact us

Tel: +86-755-8981 8866 Fax: +86-755-8427 6832

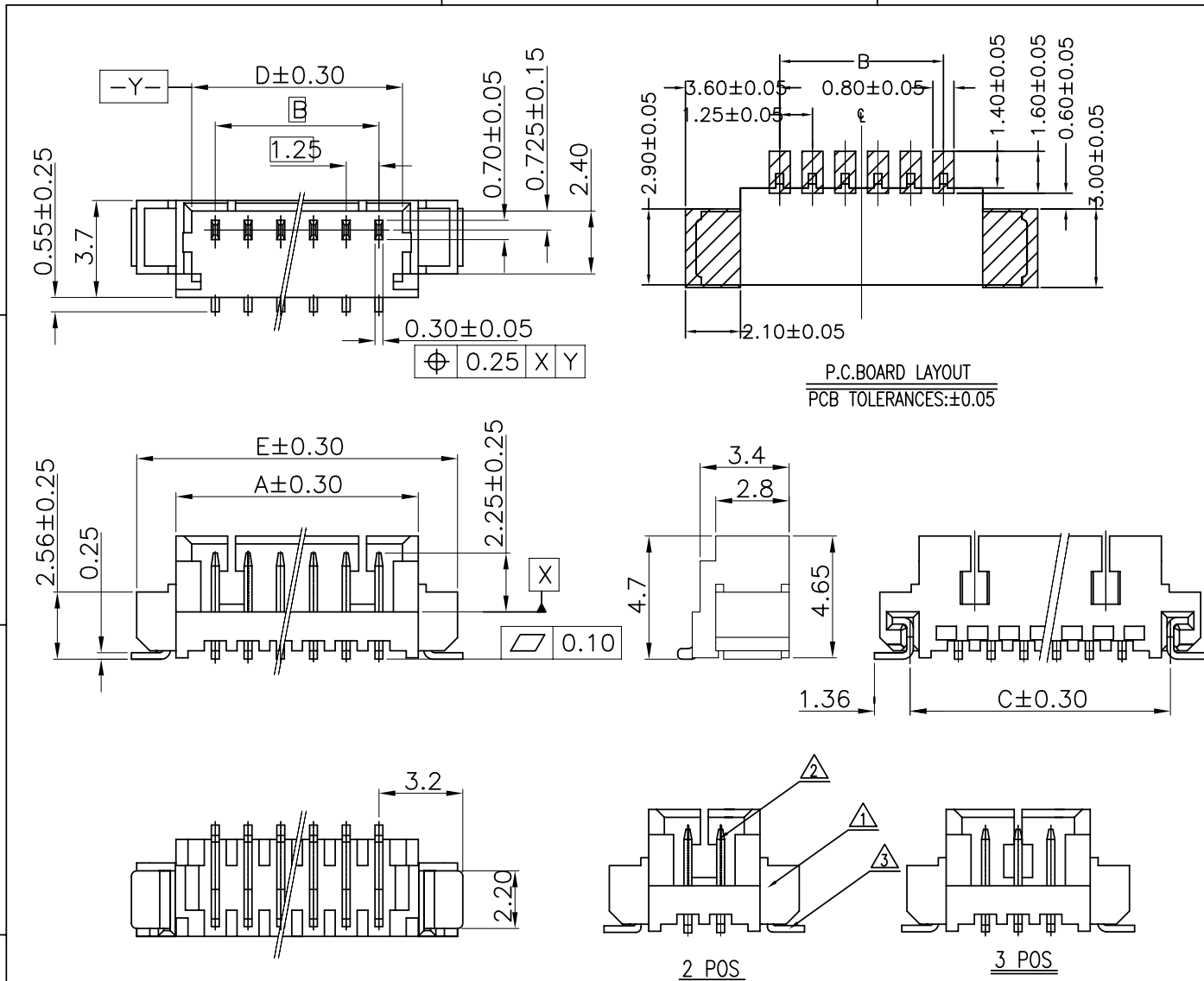
Email & Skype: info@chipsmall.com Web: www.chipsmall.com

Address: A1208, Overseas Decoration Building, #122 Zhenhua RD., Futian, Shenzhen, China





Copyright FCI.



NOTES
 1. SPECIFICATIONS
 Current Rating: 1A AC,DC
 Voltage Rating: 125V AC,DC
 Temperature Range: -40°C ~ +105°C
 Contact Resistance: 20mΩ Max.
 Insulation Resistance: 100MΩ Min.
 Withstanding Voltage: 500V AC/minute
 2. Material & Finish:
 Housing: Natural Thermoplastic, UL94V-0
 Contact and metal hold-down: Phosphor Bronze
 Plating of contact: Matte Tin or gold plating over Nickel
 Plating of metal hold-down: Matte Tin over Nickel
 3. Crimping application hand tool P/N: 10118656-1000
 4. Ordering Information & Dimensions:
 10114828- X X X XX X LF
 Material _____ LF: See note A
 1: LCP _____ VOID/NORMAL
 1:SEE SHEET 2(VOID 2&4 PIN)
 Plating _____ pin counts from 02~15
 0: Matte Tin
 1: Gold Flash
 3: Gold 30u"
 Packaging
 1: Tape & Reel
 2: Tape & Reel+ Cap(sheet 2)

Part No.	Dimensions					
	POS	A	B	C	D	E
10114828-xxx02LF	2	4.25	1.25±0.10	4.94	3.05	7.25
10114828-xxx03LF	3	5.50	2.50±0.10	6.19	4.30	8.50
10114828-xxx04LF	4	6.75	3.75±0.10	7.44	5.55	9.75
10114828-xxx05LF	5	8.00	5.00±0.10	8.69	6.80	11.00
10114828-xxx06LF	6	9.25	6.25±0.15	9.94	8.05	12.25
10114828-xxx07LF	7	10.50	7.50±0.15	11.19	9.30	13.50
10114828-xxx08LF	8	11.75	8.75±0.15	12.44	10.55	14.75
10114828-xxx09LF	9	13.00	10.00±0.15	13.69	11.80	16.00
10114828-xxx10LF	10	14.25	11.25±0.20	14.94	13.05	17.25
10114828-xxx11LF	11	15.50	12.50±0.20	16.19	14.30	18.50
10114828-xxx12LF	12	16.75	13.75±0.20	17.44	15.55	19.75
10114828-xxx13LF	13	18.00	15.00±0.20	18.69	16.80	21.00
10114828-xxx14LF	14	19.25	16.25±0.20	19.94	18.05	22.25
10114828-xxx15LF	15	20.50	17.50±0.20	21.19	19.30	23.50

Note A: The LF means RoHS compliance, the housing will withstand exposure to peak temperature 260 degree C for 5 sec in the IR re-flow process.

ITEM	MATERIAL	DESCRIPTION
①	THERMOPLASTIC HIGH TEMPERATURE	HOUSING
②	COPPER ALLOY	TERMINAL
③	COPPER ALLOY	HOLD DOWN

rev	ecn no	dr	date
A	T10-0145	J H	12/1/10
H	ELX-N-17075	TIM	2014/04/28
J	ELX-N-17516	TIM	2014/04/21

www.fciconnect.com		surface 6.4 ISO 1302	tolerance std ISO 406 ISO 1101	projection	MM
		TOLERANCES UNLESS OTHERWISE SPECIFIED		⊕	↔
Dr	JASON HSU	12/1/10	ANGULAR	size	A4
Eng	JASON HSU	12/1/10	LINEAR	0.X	±0.25
Chr	GARY HSIEH	12/1/10	0° ±2°	0.XX	±0.15
Appr	JOSEPH HSIA	12/1/10	Product family	0.XXX	-
			WTB	ECN	Scale 1.000
			Product family	WTB	Spec ref
FCI title				dwg no	Rev.
WTB 1.25MM WAFER 180° SMT				10114828	J
catalog no				CUSTOMER	sheet 1 of 2

REV F - 2006-04-17

1

2

3

4

A

B

C

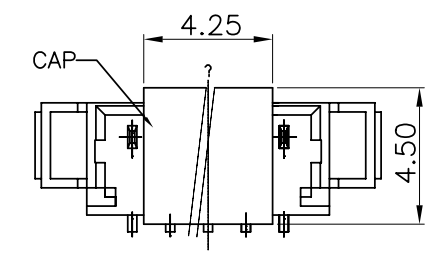
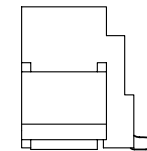
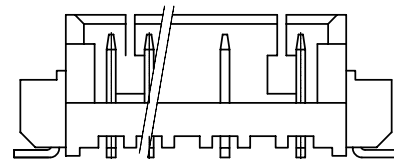
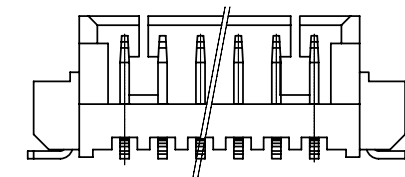
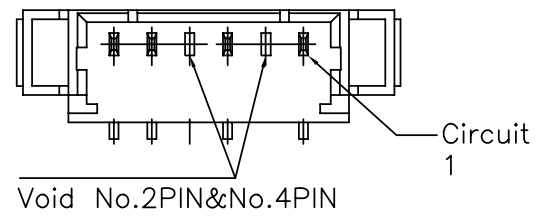
D

A

B

C

D



ASSEMBLY CAP

10114828-XXXXX1LF



Copyright FCI.

www.fciconnect.com			surface 6.4 ISO 1302	tolerance std ISO 406 ISO 1101	projection ISO 1101	MM
TOLERANCES UNLESS OTHERWISE SPECIFIED			ANGULAR	LINEAR	size A4	Scale 1.000
Dr	JASON HSU	12/1/10	0°	±2°	0.X ±0.25	ECN
Eng	JASON HSU	12/1/10	0.XX ±0.15	0.XXX -	ECN	Spec ref
Chr	GARY HSIEH	12/1/10	Product family		WTB	
Appr	JOSEPH HSIA	12/1/10	title		WTB 1.25MM WAFER 180° SMT	Rev. J
rev			ecn no		dr	date
J						
FCI			catalog no		CUSTOMER	sheet 2 of 2
dwg no			10114828			

REV F - 2006-04-17

1

2

3

4

PDS: Rev :J

STATUS:Released

Printed: Apr 25, 2014