



Chipsmall Limited consists of a professional team with an average of over 10 year of expertise in the distribution of electronic components. Based in Hongkong, we have already established firm and mutual-benefit business relationships with customers from,Europe,America and south Asia,supplying obsolete and hard-to-find components to meet their specific needs.

With the principle of “Quality Parts,Customers Priority,Honest Operation,and Considerate Service”,our business mainly focus on the distribution of electronic components. Line cards we deal with include Microchip,ALPS,ROHM,Xilinx,Pulse,ON,Everlight and Freescale. Main products comprise IC,Modules,Potentiometer,IC Socket,Relay,Connector.Our parts cover such applications as commercial,industrial, and automotives areas.

We are looking forward to setting up business relationship with you and hope to provide you with the best service and solution. Let us make a better world for our industry!



Contact us

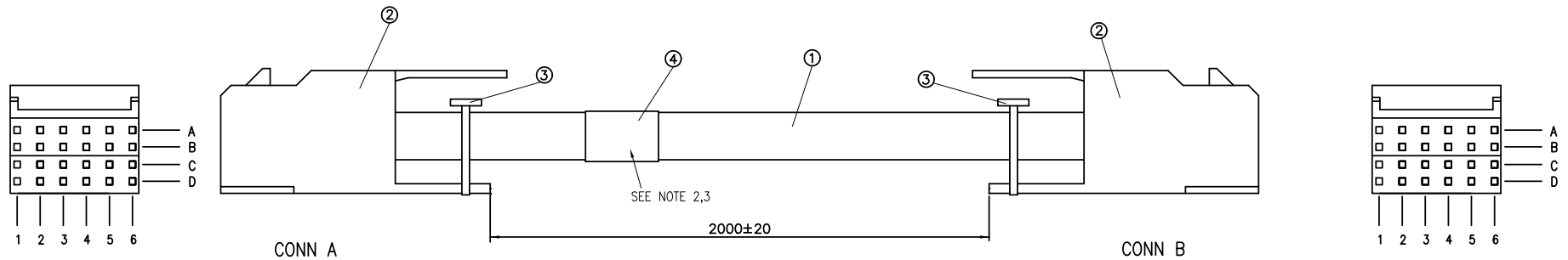
Tel: +86-755-8981 8866 Fax: +86-755-8427 6832

Email & Skype: info@chipsmall.com Web: www.chipsmall.com

Address: A1208, Overseas Decoration Building, #122 Zhenhua RD., Futian, Shenzhen, China




FCI Product number	length(L)
10115180-N0200YYLF	2000 mm



WIRE DIAGRAM

CONN A	CONN B	CABLE PAIR
A1	A1	1
B1	B1	1
C1	C1	2
D1	D1	2
A2	A2	3
B2	B2	3
C2	C2	4
D2	D2	4
A3	A3	5
B3	B3	5
C3	C3	6
D3	D3	6
A4	A4	7
B4	B4	7
C4	C4	8
D4	D4	8

NOTES:

- MATES WITH HEADER FCI PART NUMBER: 70232-116LF(24PIN)
- UNLESS OTHERWISE SPECIFIED ,LABEL POSITION SHALL BE APPROXIMATELY 50MM FROM REAR OF CONNECTOR
- UNLESS OTHERWISE SPECIFIED ,LABEL CONTENT SHALL CONTAINS THE BELOW:

 - FCI P/N
 - YYWW
- ALL CABLE ASSEMBLIES SHALL BE TESTED 100% FOR CONTINUITY AS DEFINED IN WIRING LIST
- UNLESS OTHERWISE SPECIFIED ALL CABLE ASSEMBLIES SHALL BE 100% HI-POT TESTED BY APPLYING DC 300V FOR MINIMUM OF 0.01S, CONTACTION RESISTANCE 5 Ohm, INSULATION RESISTANCE 20 M Ohm. UNLESS ACTIVE COMPONENTS ARE USED IN THIS ASSEMBLY.
- OTHER TESTING PERFORMED AS REQUIRED BY PRODUCT SPECIFICATION
- LEAD FREE PRODUCTS MEET EUROPEAN UNION DIRECTIVES AND OTHER COUNTRY REGULATIONS AS AS DESCRIBED IN GS-22-008
- CONNECTOR ASSEMBLIES SHOWN ARE FOR REFERENCE ONLY AND MAY NOT SHOW ALL PART DETAIL. REFERENCE CONNECTOR ASSEMBLY DRAWING FOR COMPLETE DETAILS.
- GLOBAL STANDARDS FOR CABLE PACKAGING: *****
- THIS DIMENSION IS A FINISHED PRODUCT LENGTH



Copyright FCI.

ITEM	DESCRIPTION	Q'TY	UNIT
④	label,w=25mm ref	1	EA
③	cable tie	2	EA
②	24pin metal connector,24~26AWG,standard latch	2	EA
①	raw cable,8pair,26AWG solid tinned copper,PVC jacket(black color), 100±15 Ohms,-30°C~+75°C,Rated Voltage 80V,	A/R	M

rev	ecn no	dr	date
A	/	Tommy	3/19'12

www.fciconnect.com			surface - ✓	tolerance std - -	projection ⊕	mm ↔
			TOLERANCES UNLESS OTHERWISE SPECIFIED		size A3	Scale NTS
Dr	Tommy Lin	2012-3-19	ANGULAR	0.X ±-	ECN -	
Eng	Tommy Lin	2012-3-19	LINEAR	0.XX ±-	Spec ref -	
Chr	Roger Cheng	2012-3-19	0° ±-	0.XXX ±-		
Appr	Jackson Wang	2012-3-19	Product family		C&A	
FCI			title		dwg no	Rev.
			Metral cable assembly		10115180	A
			catalog no	-	CUSTOMER	sheet 1 of 1