



Chipsmall Limited consists of a professional team with an average of over 10 year of expertise in the distribution of electronic components. Based in Hongkong, we have already established firm and mutual-benefit business relationships with customers from,Europe,America and south Asia,supplying obsolete and hard-to-find components to meet their specific needs.

With the principle of “Quality Parts,Customers Priority,Honest Operation,and Considerate Service”,our business mainly focus on the distribution of electronic components. Line cards we deal with include Microchip,ALPS,ROHM,Xilinx,Pulse,ON,Everlight and Freescale. Main products comprise IC,Modules,Potentiometer,IC Socket,Relay,Connector.Our parts cover such applications as commercial,industrial, and automotives areas.

We are looking forward to setting up business relationship with you and hope to provide you with the best service and solution. Let us make a better world for our industry!



## Contact us

Tel: +86-755-8981 8866 Fax: +86-755-8427 6832

Email & Skype: [info@chipsmall.com](mailto:info@chipsmall.com) Web: [www.chipsmall.com](http://www.chipsmall.com)

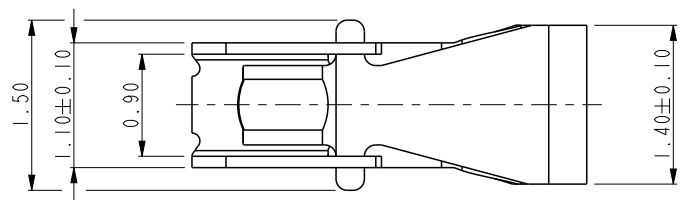
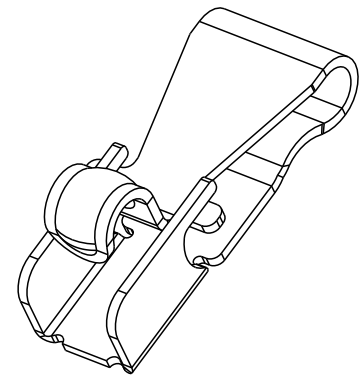
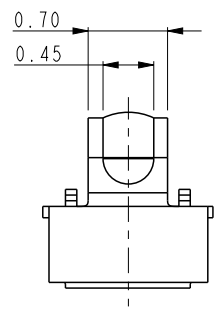
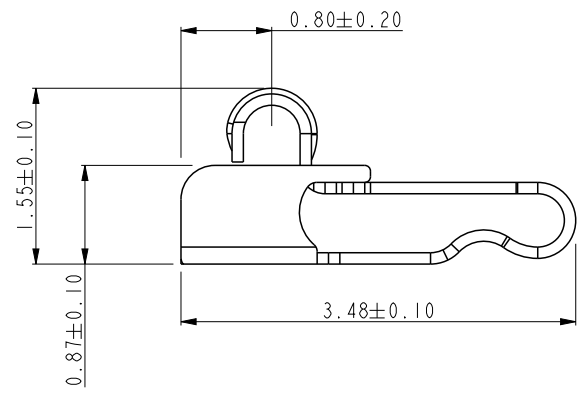
Address: A1208, Overseas Decoration Building, #122 Zhenhua RD., Futian, Shenzhen, China





Copyright FCI.

	PRODUCT NO.
FCI	10115748-001RLF 10115748-003RLF 10115748-009RLF



NOTES:  
1. MATERIAL: BERYLLIUM COPPER ALLOY.  
2. CONTACT PLATING:  
CONTACT AREA: PLATING 1um Au OVER 1.0/3.0 um Ni UNDERPLATE.  
or PLATING 0.05~0.15um Au OVER 1.0/3.0 um Ni UNDERPLATE.  
or PLATING 1um GXT OVER 1.0/3.0 um Ni UNDERPLATE.  
(1um GXT is 0.025~0.125um Au over 0.875um PdNi)  
SOLDER AREA: PLATING 0.05 TO 0.15um Au OVER 1.0/3.0 um Ni UNDERPLATE.  
3. PACKAGING: TAPE & REEL  
4. PART NUMBER DESCRIPTION:  
10115748- 0 0 X X X  
LF: LEAD FREE  
R: TAPE & REEL  
CONTACT PLATING:  
1: 1um Au OVER Ni  
3: 0.05 to 0.15um Au OVER Ni  
9: 1um GXT OVER Ni

rev	ecn no	dr	date
A	DG10-0291	NZ	2010-08-05
B	DG11-0048	SM	2011-02-22
C	ELX-DG-011091-1	ANDY	2012-03-28
-	-	-	-
-	-	-	-
-	-	-	-
-	-	-	-

spec ref	*	dr	Louis Ng	2010/08/11	projection	mm	size	A4	scale	15.000
tolerance std	TOLERANCES UNLESS OTHERWISE SPECIFIED	eng	Andy Lu	2012/03/28			ecn no	ELX-DG-011091-1		
ASME Y14.5		chr	Young Ou	2012/03/28			rel level	Released		
		appr	Pei-Ming Zheng	2012/03/28	product family	-				
surface	linear	0.X	±0.25		title	ANTENNA CONNECTOR	dwg no	10115748	rev	C
		0.XX	±0.10							
		0.XXX	±0.050							
ASME Y14.5	angular	0°	±2°	www.fci.com	cat. no.	-	Product - Customer Drw	sheet 1 of 1		