



Chipsmall Limited consists of a professional team with an average of over 10 year of expertise in the distribution of electronic components. Based in Hongkong, we have already established firm and mutual-benefit business relationships with customers from,Europe,America and south Asia,supplying obsolete and hard-to-find components to meet their specific needs.

With the principle of “Quality Parts,Customers Priority,Honest Operation,and Considerate Service”,our business mainly focus on the distribution of electronic components. Line cards we deal with include Microchip,ALPS,ROHM,Xilinx,Pulse,ON,Everlight and Freescale. Main products comprise IC,Modules,Potentiometer,IC Socket,Relay,Connector.Our parts cover such applications as commercial,industrial, and automotives areas.

We are looking forward to setting up business relationship with you and hope to provide you with the best service and solution. Let us make a better world for our industry!



Contact us

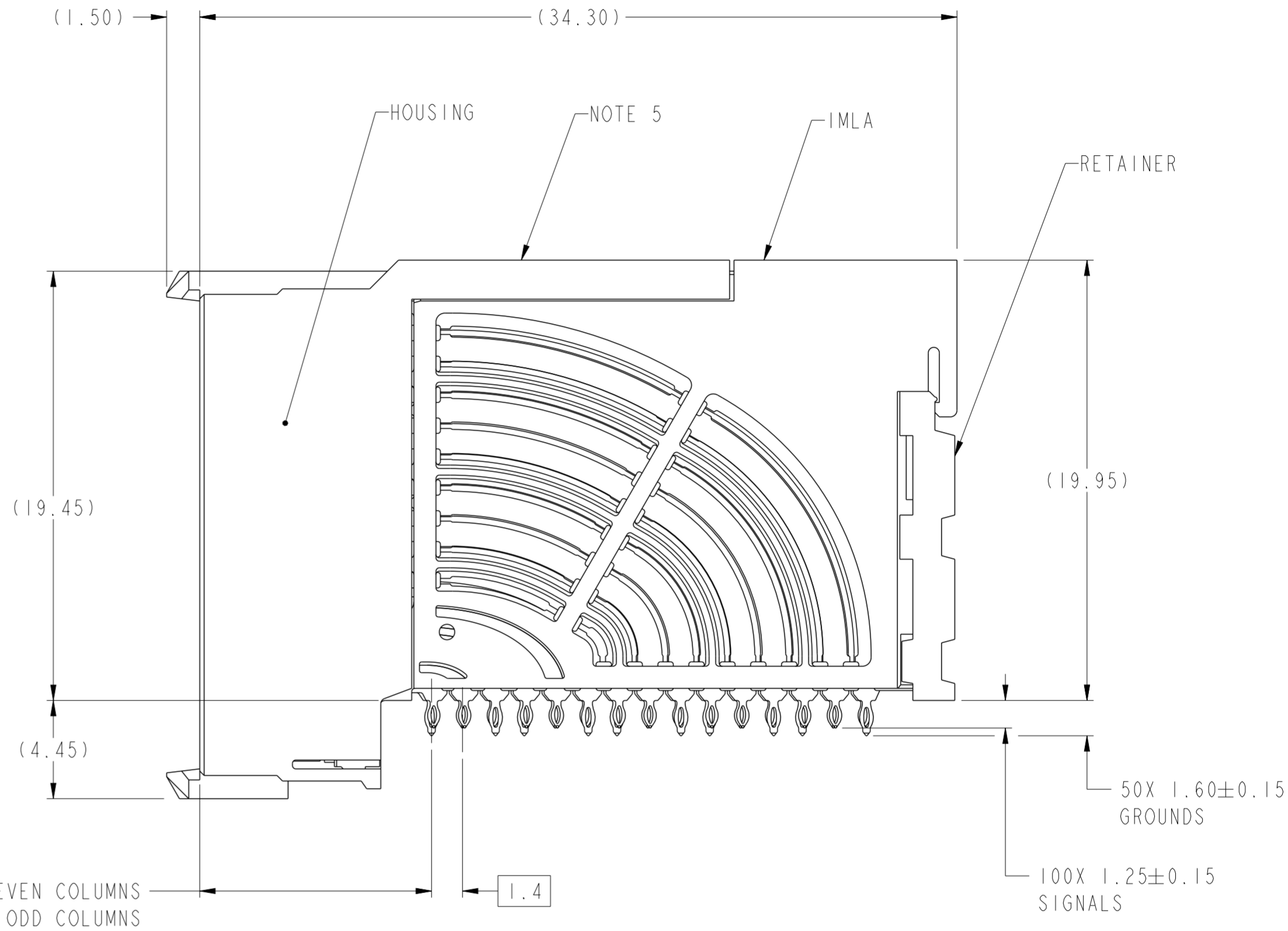
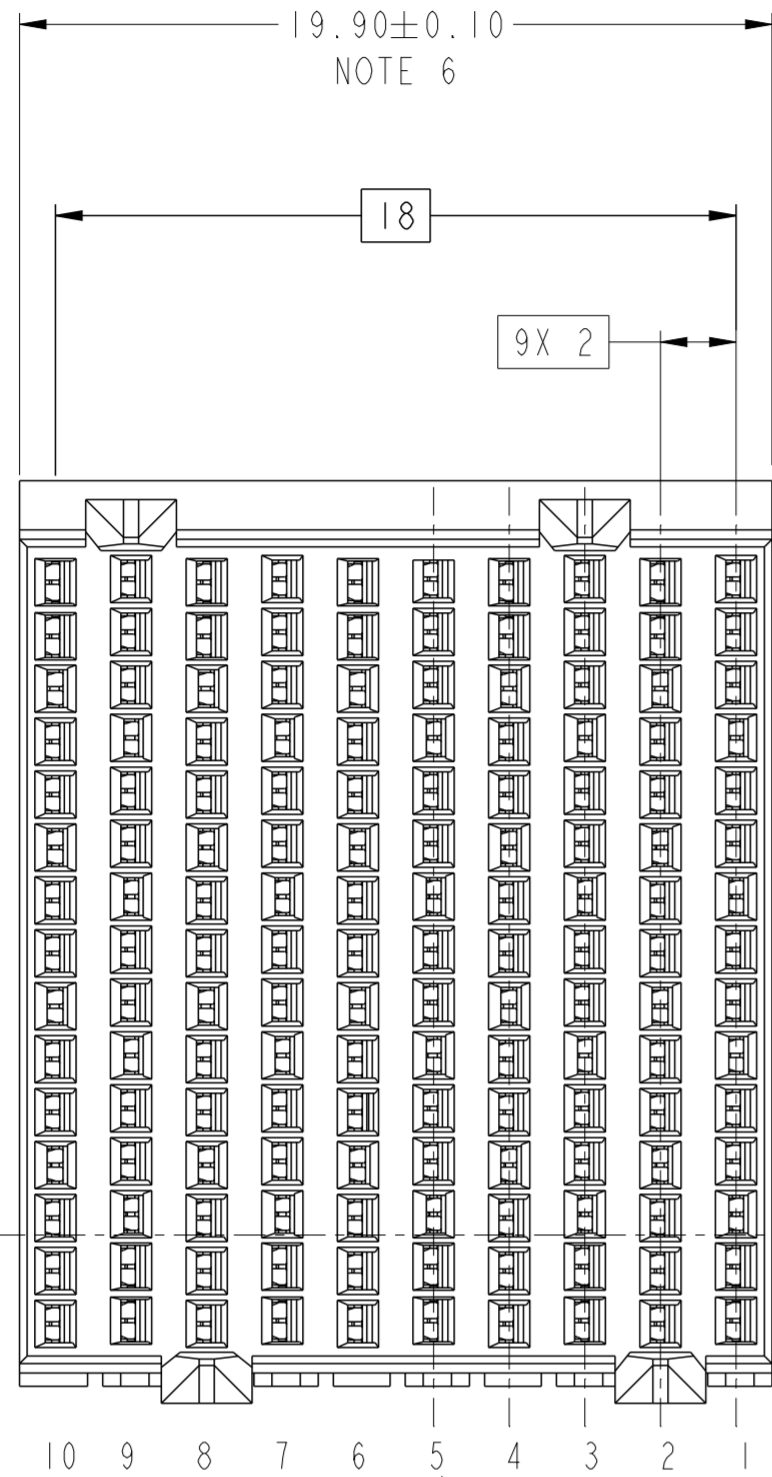
Tel: +86-755-8981 8866 Fax: +86-755-8427 6832

Email & Skype: info@chipsmall.com Web: www.chipsmall.com

Address: A1208, Overseas Decoration Building, #122 Zhenhua RD., Futian, Shenzhen, China



PRODUCT NUMBER
SEE SHEET 3



10.50 ϕ EVEN COLUMNS
10.60 ϕ ODD COLUMNS

COLUMN ID

ODD COLUMN, CONTACT ROW ID

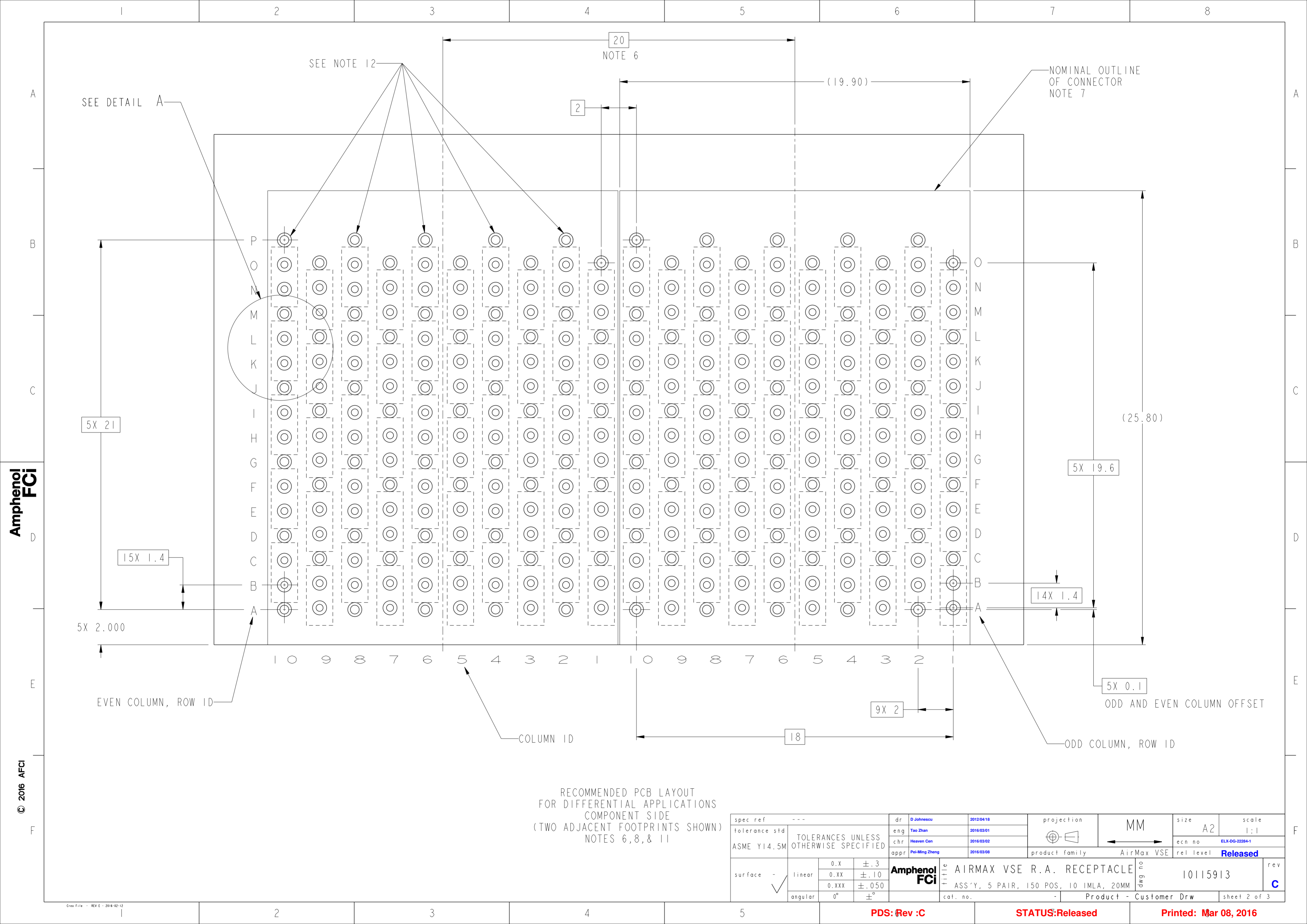
EVEN COLUMN, CONTACT ROW ID
ODD AND EVEN COLUMNS ARE OFFSET

spec ref	---	dr	D Johnescu	2012/04/18	projection	MM	size	A2	scale	1:1
tolerance std	ASME Y14.5M	eng	Tao Zhan	2016/03/01	chr	Heaven Cen	ecn no	ELX-DG-22284-1	rel level	Released
surface	-	appr	Pei-Ming Zheng	2016/03/08	product family	AirMax VSE	rel level	Released	rev	C
linear	0.X $\pm .3$ 0.XX $\pm .10$ 0.XXX $\pm .050$	Amphenol FCI	title	AIRMAX VSE R.A. RECEPTACLE		dwg no	10115913			
angular	0° \pm		cat. no.	-		Product - Customer Drw	sheet 1 of 3			

PDS: Rev :C

STATUS:Released

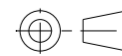

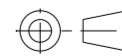
Printed: Mar 08, 2016



Amphenol
FCi

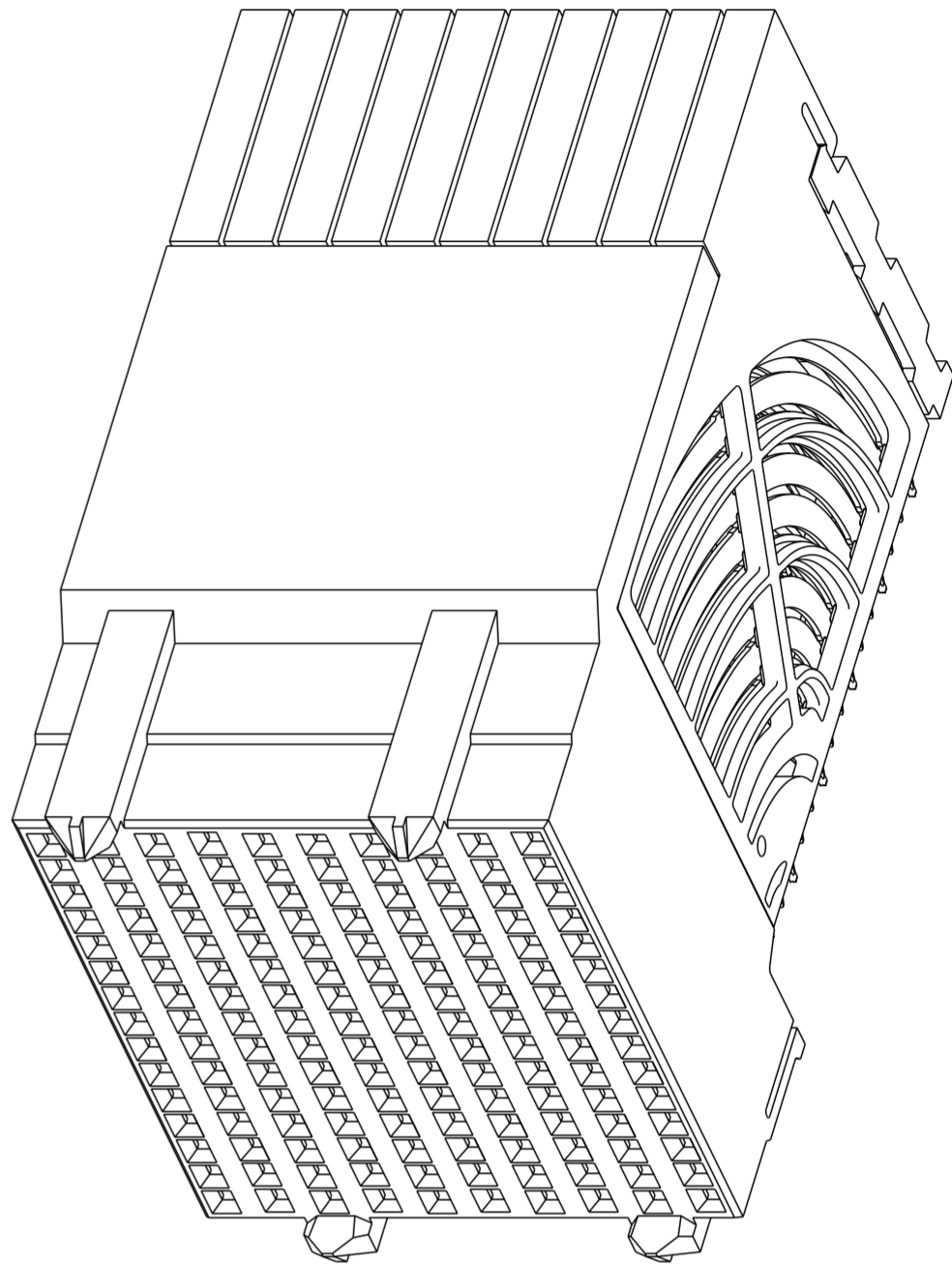
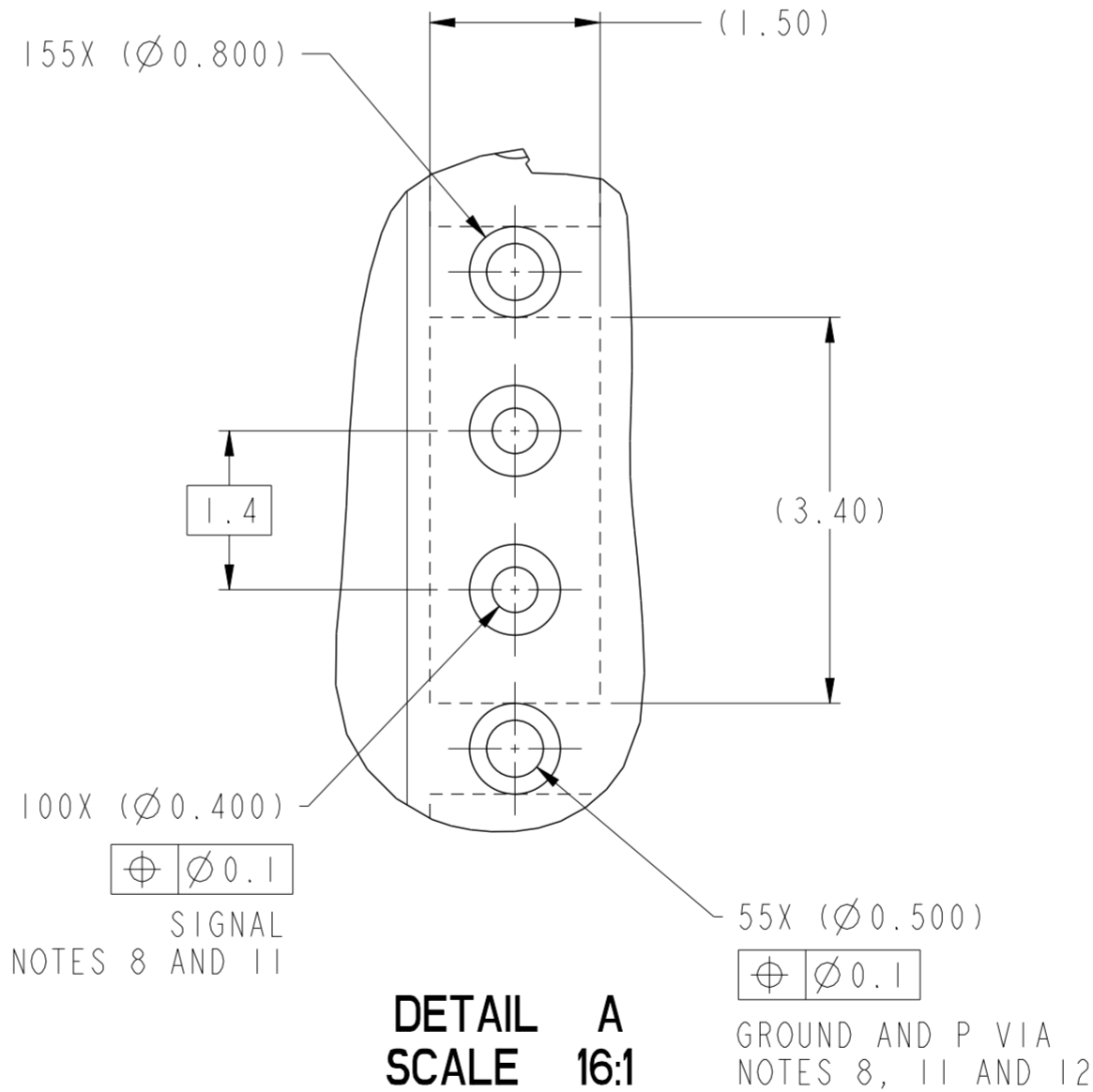
© 2016 APCI

RECOMMENDED PCB LAYOUT
FOR DIFFERENTIAL APPLICATIONS
COMPONENT SIDE
(TWO ADJACENT FOOTPRINTS SHOWN)
NOTES 6, 8, & 11

spec ref				---		dr		D Johnescu		2012/04/18		projection				MM				size		A2		scale		1:1	
tolerance std				ASME Y14.5M		eng		Tao Zhan		2016/03/01								ecn no		ELX-DG-22284-1							
TOLERANCES UNLESS OTHERWISE SPECIFIED		chr		Heaven Cen		2016/03/02		rel level		Released																	
		appr		Pei-Ming Zheng		2016/03/08		product family										AirMax VSE									
surface		linear		0.X		±.3		Amphenol FCI		title		AIRMAX VSE R.A. RECEPTACLE		dwg no		10115913		rev		C							
				0.XX		±.10																					
				0.XXX		±.050																					
		angular		0°		±°		cat. no.		-		Product - Customer Drw		sheet 2 of 3													

PRODUCT NUMBER	PRESS-FIT TAIL PLATING TYPE
10115913-101LF	TIN OVER NICKEL (LEAD FREE)

- 1 - CONNECTOR MATERIALS:
HOUSING: HIGH TEMP THERMOPLASTIC, NATURAL, UL94-V0
IMLA PLASTIC: HIGH TEMP THERMOPLASTIC, BLACK, UL94-V0
CONTACT: COPPER ALLOY
ORGANIZER: HIGH TEMP THERMOPLASTIC, WHITE, UL94-V0
- 2 - CONTACT PLATING:
SEPARABLE INTERFACE:
PERFORMANCE-BASED PLATING, QUALIFIED TO MEET THE
REQUIREMENTS OF FCI PRODUCT SPECIFICATION GS-12-0956
INCLUDING TELCORDIA GR-1217-CORE (NOVEMBER 1995)
CENTRAL OFFICE TEST SEQUENCE
- PRESS-FIT TAILS: SEE TABLE
- 3 - PRODUCT SPECIFICATION: GS-12-0956
- 4 - APPLICATION SPECIFICATION: GS-20-0305.
- 5 - PRODUCT MARKING, (PROTOTYPE, PART NUMBER & LOT CODE), ON THIS SURFACE.
- 6 - THE MINIMUM CENTERLINE SPACING BETWEEN ADJACENT
MODULES IS 20.0 MM.
- 7 - CONNECTOR OUTLINE MAY BE SCREEN PRINTED ONTO CUSTOMER PCB TO
BE USED AS A GUIDE FOR MANUAL CONNECTOR PLACEMENT.
- 8 - REFER TO CUSTOMER DRAWING 10104444 FOR INFORMATION
ON PCB HOLE DIAMETERS AND PLATING OPTIONS
- 9 - LEAD FREE PRODUCT MEETS THE EUROPEAN UNION DIRECTIVES &
OTHER COUNTRY REGULATIONS AS DESCRIBED IN GS-22-008
- 10 - PACKAGING MEETS GS-14-920 LEAD FREE LABELING
SPECIFICATION.
- 11 - GROUND CONTACTS (C,F,I,L AND O IN ODD COLUMNS AND A,D,G,J AND M,
EVEN COLUMNS) REQUIRE (Ø0.500) FINISHED HOLES. SIGNAL LOCATIONS
REQUIRE (Ø0.400) FINISHED HOLES.
- 12 - THESE OUTER VIAS (P) ARE OPTIONAL. WHILE NO CONNECTOR EONS ARE.
PRESSED INTO THESE HOLES, WE RECOMMEND (Ø 0.500) FINISHED HOLES
AT THESE LOCATIONS TO PROVIDE GROUND SYMMETRY THROUGH THE PCB



10115913-101LF
SCALE 4:1

spec ref	---	dr	D Johnescu	2012/04/18	projection	MM	size	A2	scale	4:1
tolerance std	ASME Y14.5M	eng	Tao Zhan	2016/03/01	chr	Heaven Cen	ecn no	ELX-DG-22284-1	rel level	Released
surface	linear	0.X	±.3	0.XX	±.10	0.XXX	±.050	angular	0°	±°
Amphenol FCi	title	AIRMAX VSE R.A. RECEPTACLE	ASS'Y, 5 PAIR, 150 POS, 10 IMLA, 20MM	cat. no.	Product - Customer Drw	sheet 3 of 3	rev	C		