



Chipsmall Limited consists of a professional team with an average of over 10 year of expertise in the distribution of electronic components. Based in Hongkong, we have already established firm and mutual-benefit business relationships with customers from,Europe,America and south Asia,supplying obsolete and hard-to-find components to meet their specific needs.

With the principle of “Quality Parts,Customers Priority,Honest Operation,and Considerate Service”,our business mainly focus on the distribution of electronic components. Line cards we deal with include Microchip,ALPS,ROHM,Xilinx,Pulse,ON,Everlight and Freescale. Main products comprise IC,Modules,Potentiometer,IC Socket,Relay,Connector.Our parts cover such applications as commercial,industrial, and automotives areas.

We are looking forward to setting up business relationship with you and hope to provide you with the best service and solution. Let us make a better world for our industry!



Contact us

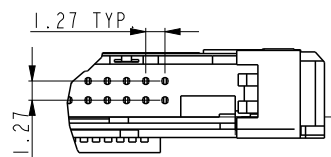
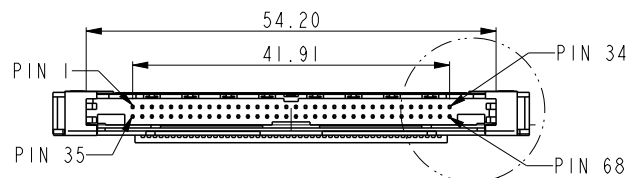
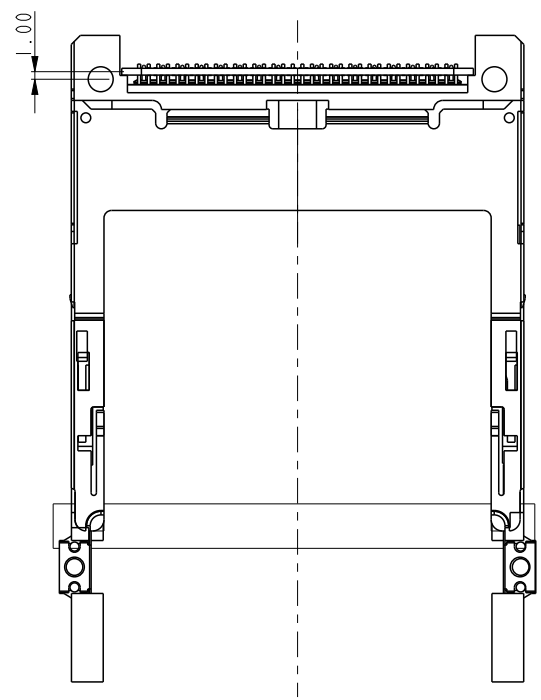
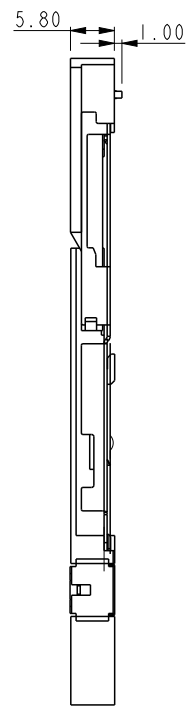
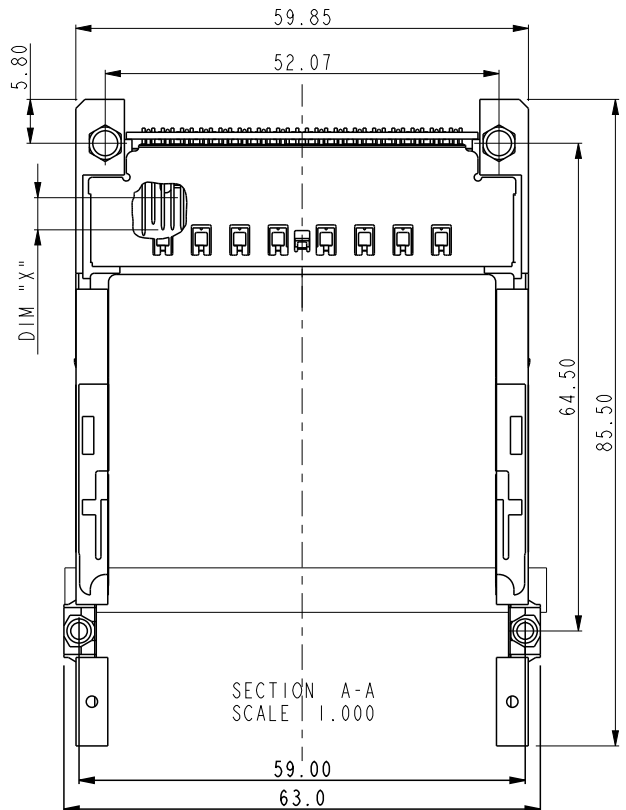
Tel: +86-755-8981 8866 Fax: +86-755-8427 6832

Email & Skype: info@chipsmall.com Web: www.chipsmall.com

Address: A1208, Overseas Decoration Building, #122 Zhenhua RD., Futian, Shenzhen, China



PRODUCT NUMBER
10116129-0001LF



DETAIL A
SCALE 2.000

dr	Su-Hua Miao	2010/11/15	projection 	MM 	size	A4	scale	1.000
eng	Su-Hua Miao	2012/05/16			ecn no	ELX-N-011498-1		
chr	-	-			rel level	Released		
appr	Rick Bian	2012/05/16	product family	-		rev	B	
		title			CARDBUS SINGLE DECK		dwg no	10116129
www.fci.com		cat. no.	-		Product - Customer Drw		sheet 1 of 2	

PRODUCT NUMBER	STAND OFF	HEADER ASS'Y	MECHANISM ASS'Y	MOUNTING STYLE TO PCB
10116129-0001LF	0.0	10116132-0200LF	72304-000	TOP

RECOMMEND P.C.B. LAYOUT

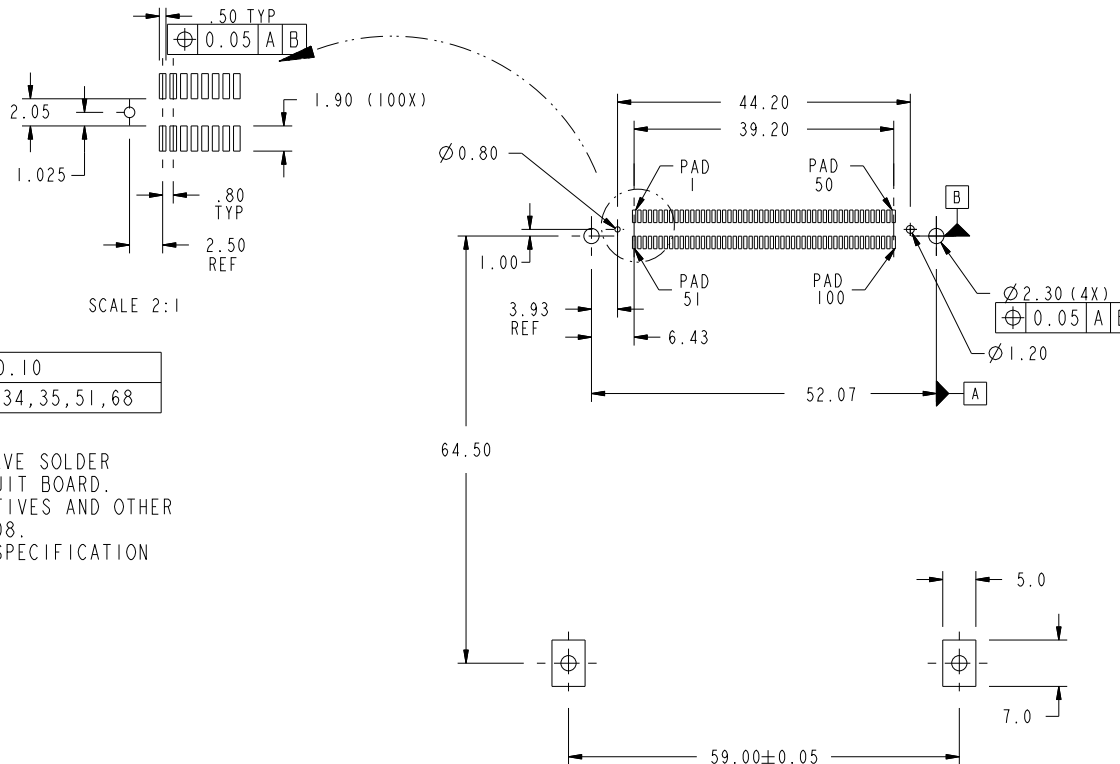
TOLERANCE: ±0.05

NOTE:

1. MATERIAL
1.1 HEADER ASS'Y
HOUSING: LCP UL94V-0 BLACK
TERMINAL: COPPER ALLOY
- 1.2 PCB: FR4
2. PLATING
UNDER PLATING: 1.27 um MIN. Ni
CONTACT AREA: 0.076 um MIN. Au
SOLDER TAIL: 2.5 um MIN. MATTE TIN
3. DIM "X"

LENGTH (mm)	4.25±0.10	3.5±0.10	5.0±0.10
PIN NUMBER	OTHERS	36,67	1,17,34,35,51,68

4. THE HOUSING WILL WITHSTAND EXPOSURE TO 260° PEAK TEMPERATURE FOR 10 SECONDS IN A WAVE SOLDER APPLICATION WITH A 1.00mm MINIMUM THICK CIRCUIT BOARD.
5. LEAD FREE PRODUCT MEETS EUROPEAN UNION DIRECTIVES AND OTHER COUNTRY REGULATIONS AS DISCRIBLED IN GS-22-008.
6. IF LEAD FREE P/N. PACKAGING MEETS GS-14-920 SPECIFICATION
7. MATED BOARD CONNECTOR P/N: 73277-101402LF.
8. PRODUCT SPEC: 110-263
9. PACKAGE SPEC: GS-14-341



Copyright FCI.

spec ref		dr Su-Hua Miao		2010/11/15		projection		MM		size A4		scale 1.000	
tolerance std		eng Su-Hua Miao		2012/05/16						ecn no ELX-N-011498-1		rel level	
TOLERANCES UNLESS OTHERWISE SPECIFIED		chr -		-								Released	
surface ✓		appr Rick Bian		2012/05/16		product family -		dwg no 10116129		rev B		sheet 2 of 2	
linear		0.X ±0.3				title CARDBUS SINGLE DECK		www.fci.com		cat. no. - Product - Customer Drw		rev B	
		0.XX ±0.15											
		0.XXX ±0.08											
angular		0° ±2°											