



Chipsmall Limited consists of a professional team with an average of over 10 year of expertise in the distribution of electronic components. Based in Hongkong, we have already established firm and mutual-benefit business relationships with customers from,Europe,America and south Asia,supplying obsolete and hard-to-find components to meet their specific needs.

With the principle of "Quality Parts,Customers Priority,Honest Operation,and Considerate Service",our business mainly focus on the distribution of electronic components. Line cards we deal with include Microchip,ALPS,ROHM,Xilinx,Pulse,ON,Everlight and Freescale. Main products comprise IC,Modules,Potentiometer,IC Socket,Relay,Connector.Our parts cover such applications as commercial,industrial, and automotives areas.

We are looking forward to setting up business relationship with you and hope to provide you with the best service and solution. Let us make a better world for our industry!



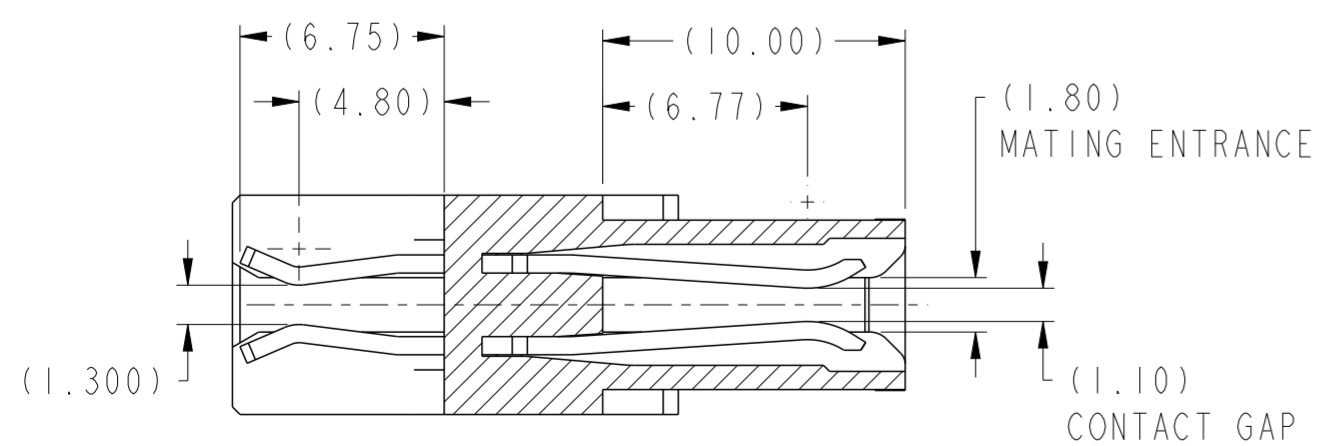
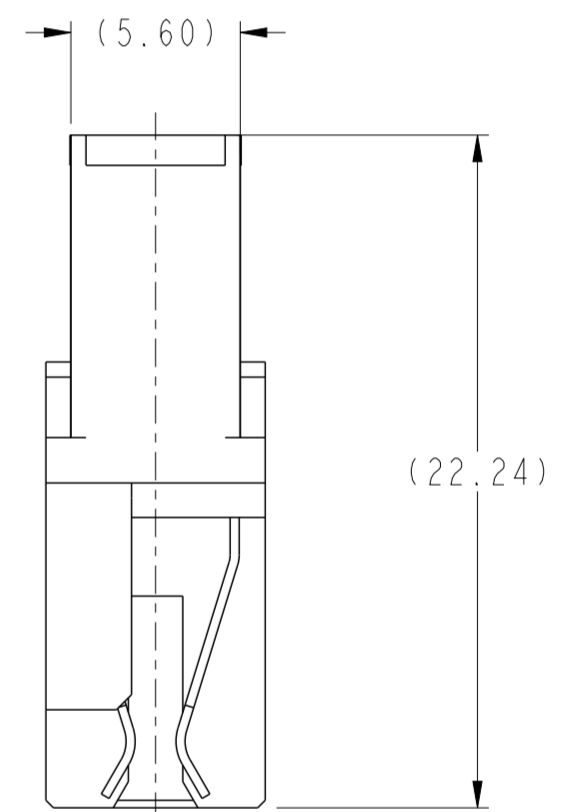
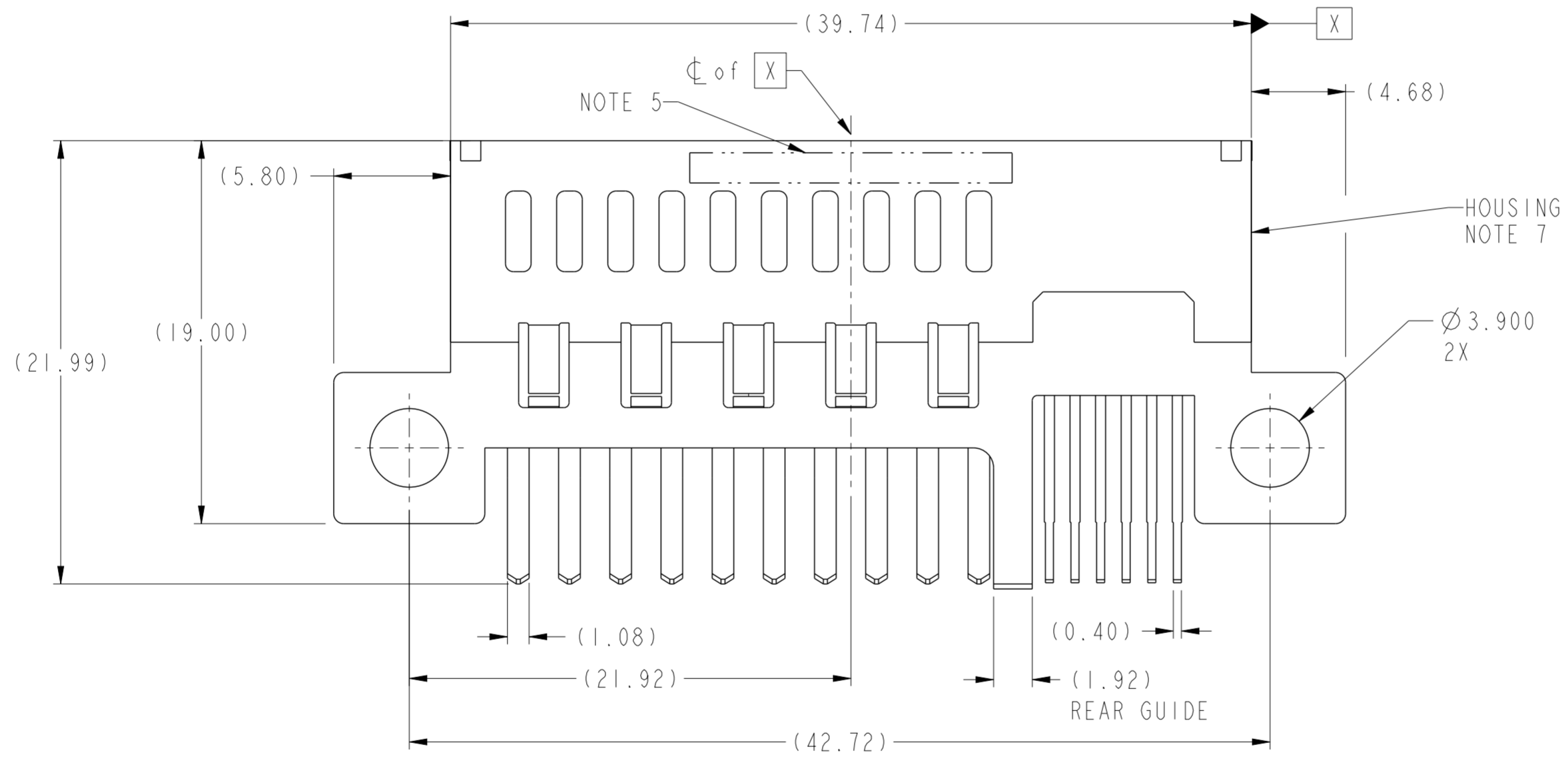
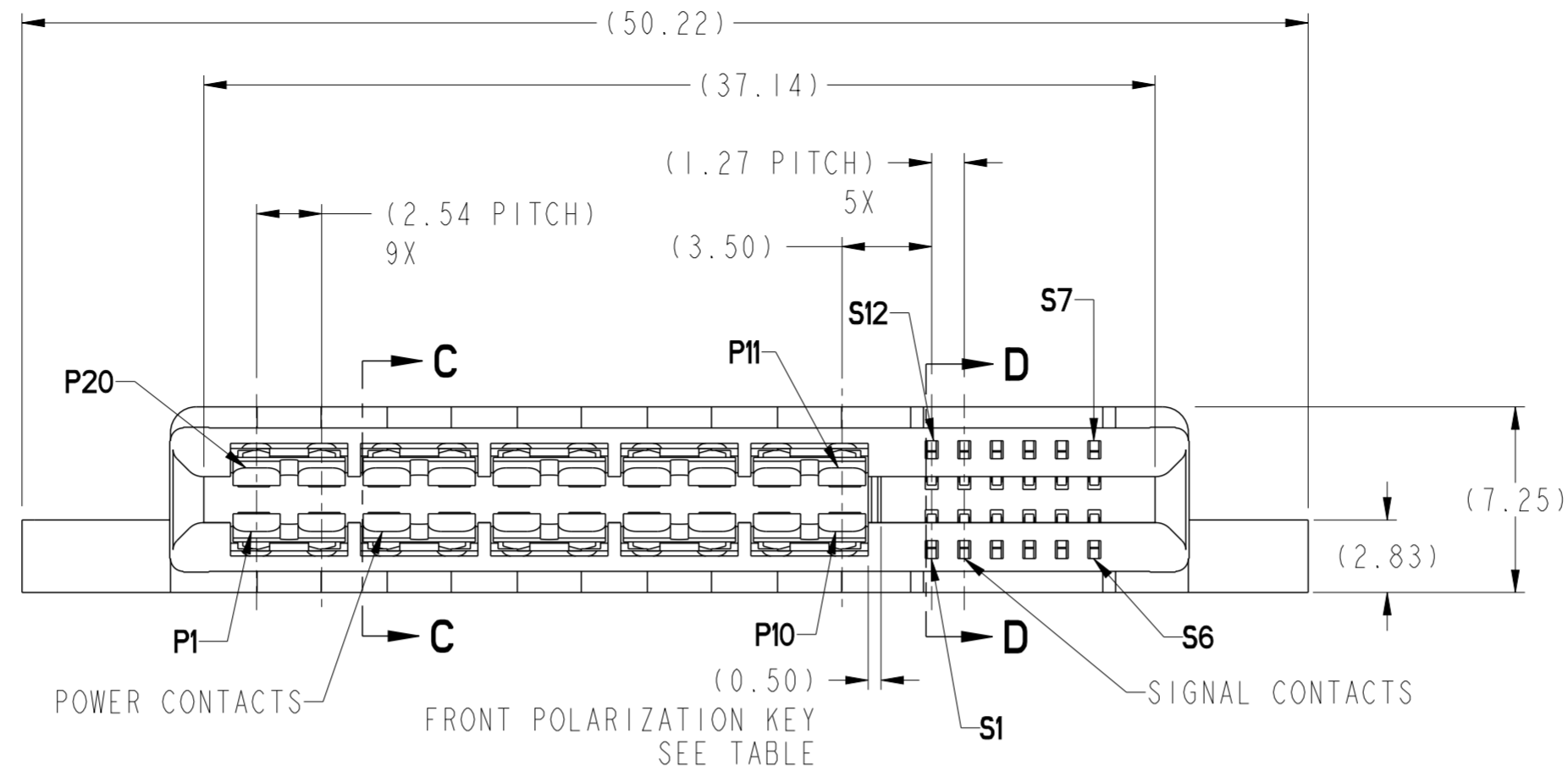
Contact us

Tel: +86-755-8981 8866 Fax: +86-755-8427 6832

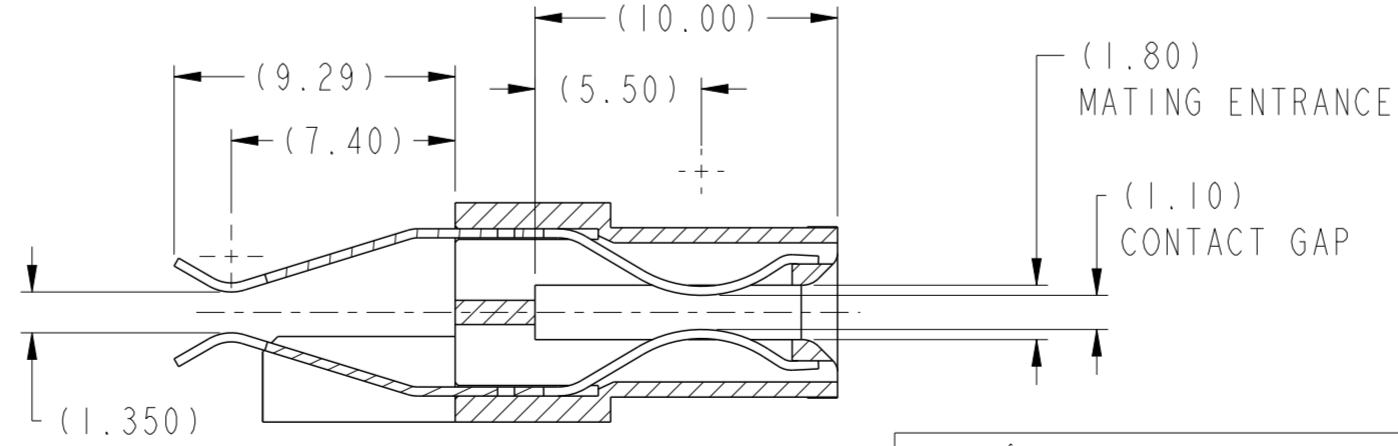
Email & Skype: info@chipsmall.com Web: www.chipsmall.com

Address: A1208, Overseas Decoration Building, #122 Zhenhua RD., Futian, Shenzhen, China





SECTION C-C

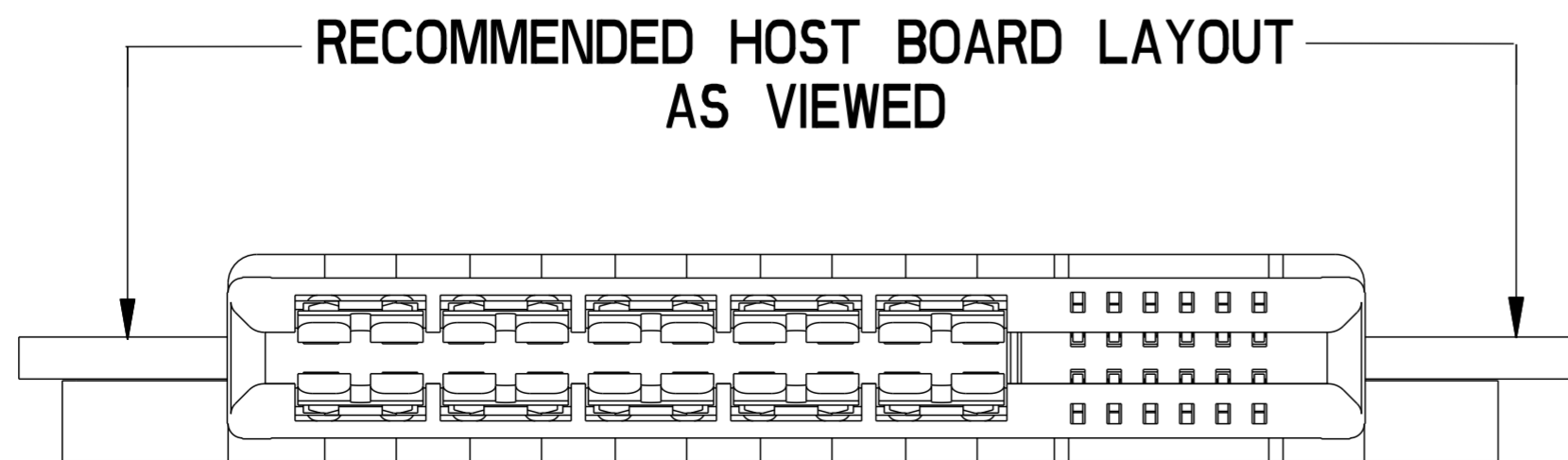
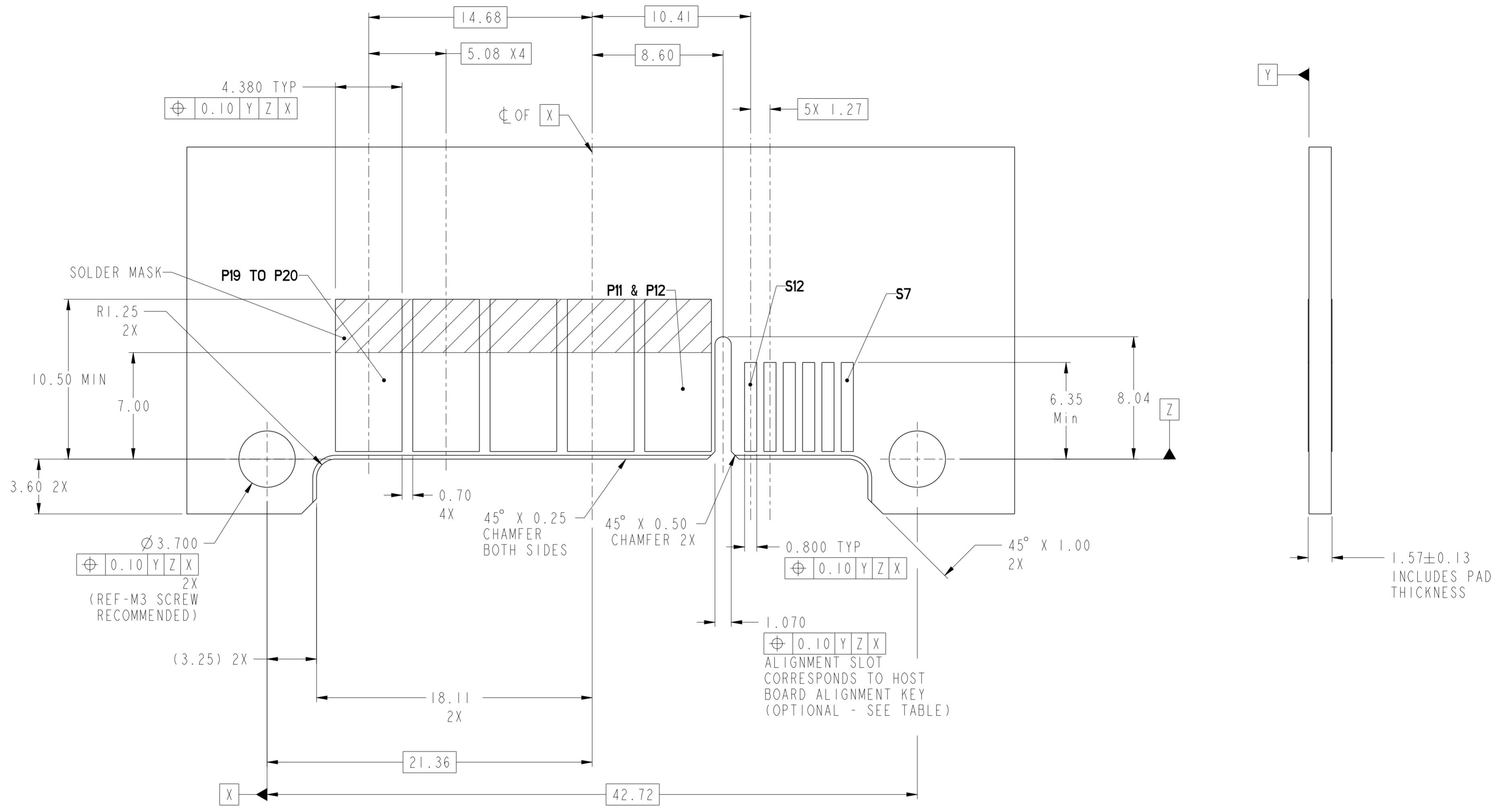


SECTION D-D

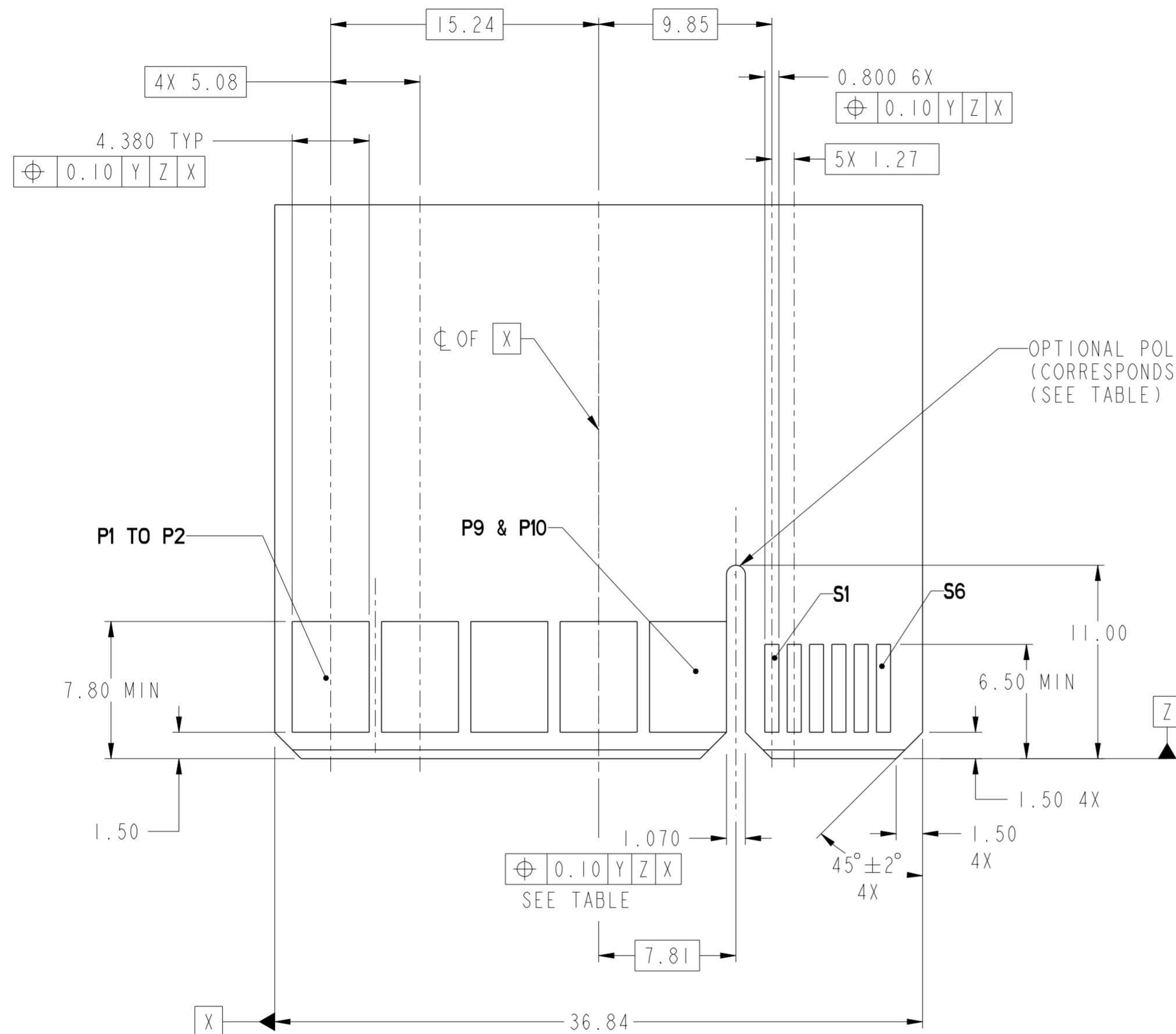
REV	ECN NO.	DR	DATE
A	---	WL	2011-05-06
B	ELX-DG-004453-1	WL	2011-07-13
C	ELX-DG-008860-1	HZ	2011-12-14

spec ref	-	dr	Wei-Long Zhang	2010/12/20	projection	MM	size	A2	scale	4:1	
tolerance std	-	eng	Wei-Long Zhang	2011/12/14			ecn no ELX-DG-008860-1	rel level Released	title HPCE-STRADDLE MT (20P-12S) (RECEPTACLE)	dwg no 10116809	rev C
surface	✓	chr	Jon Qin	2011/12/15							
		appr	Pei-Ming Zheng	2011/12/15							

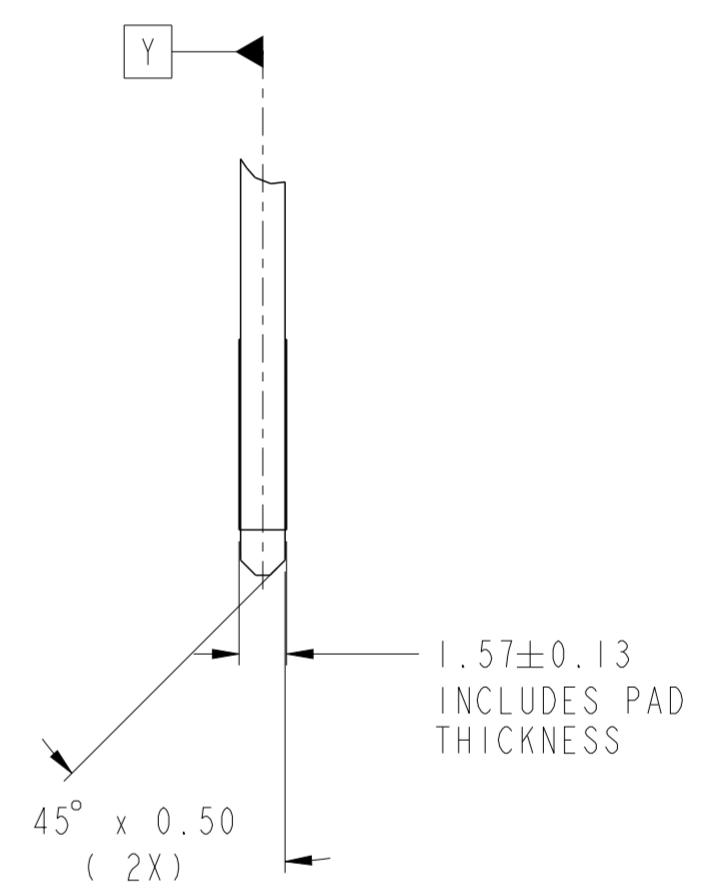
Copyright FCI.
FCI



spec ref	-	dr	Wei-Long Zhang	2010/12/20	projection	MM	size	A2	scale	4:1												
tolerance std	TOLERANCES UNLESS OTHERWISE SPECIFIED	eng	Wei-Long Zhang	2011/12/14		CARD EDGE	ecn no	ELX-DG-008860-1														
		chr	Jon Qin	2011/12/15			rel level	Released														
surface	<table border="1"> <tr> <td>linear</td> <td>0.X</td> <td>±0.3</td> </tr> <tr> <td></td> <td>0.XX</td> <td>±0.1</td> </tr> <tr> <td></td> <td>0.XXX</td> <td>±0.05</td> </tr> <tr> <td>angular</td> <td>0°</td> <td>±°</td> </tr> </table>	linear	0.X	±0.3		0.XX	±0.1		0.XXX	±0.05	angular	0°	±°	appr	Pei-Ming Zheng	2011/12/15	product family	CARD EDGE		rel level	Released	
linear	0.X	±0.3																				
	0.XX	±0.1																				
	0.XXX	±0.05																				
angular	0°	±°																				
				title	HPCE-STRADDLE MT (20P-12S) (RECEPTACLE)			dwg no	10116809													
		www.fci.com	cat. no.	-		Product - Customer Drw	sheet 2 of 4	rev C														



OPTIONAL POLARIZATION SLOT
(CORRESPONDS TO ORIENTATION KEY OPTION
(SEE TABLE))



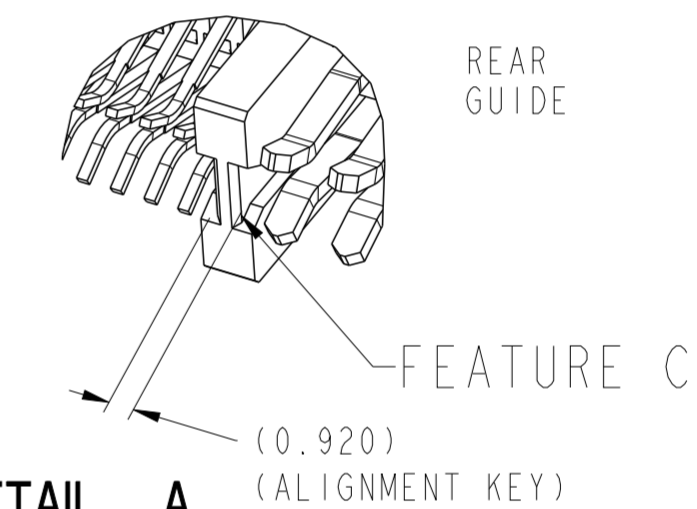
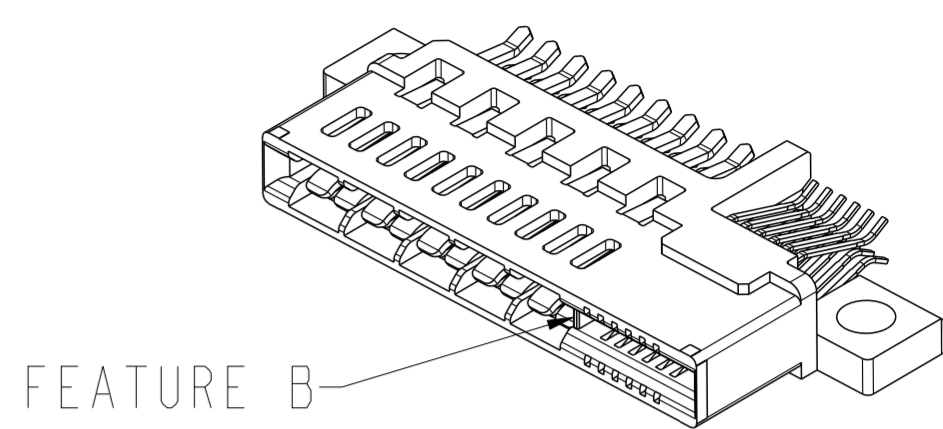
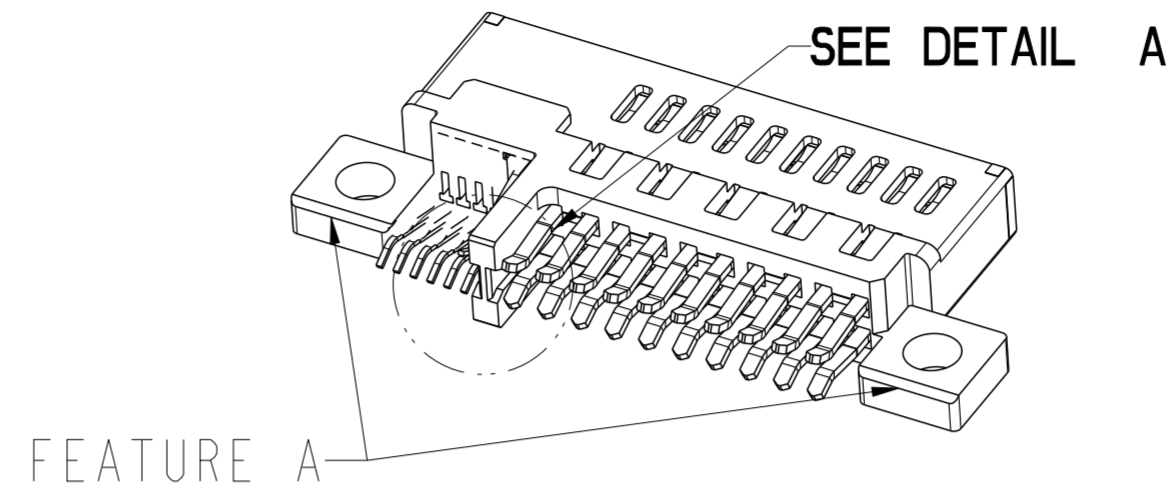
**RECOMMENDED MATING BOARD
FOOTPRINT**



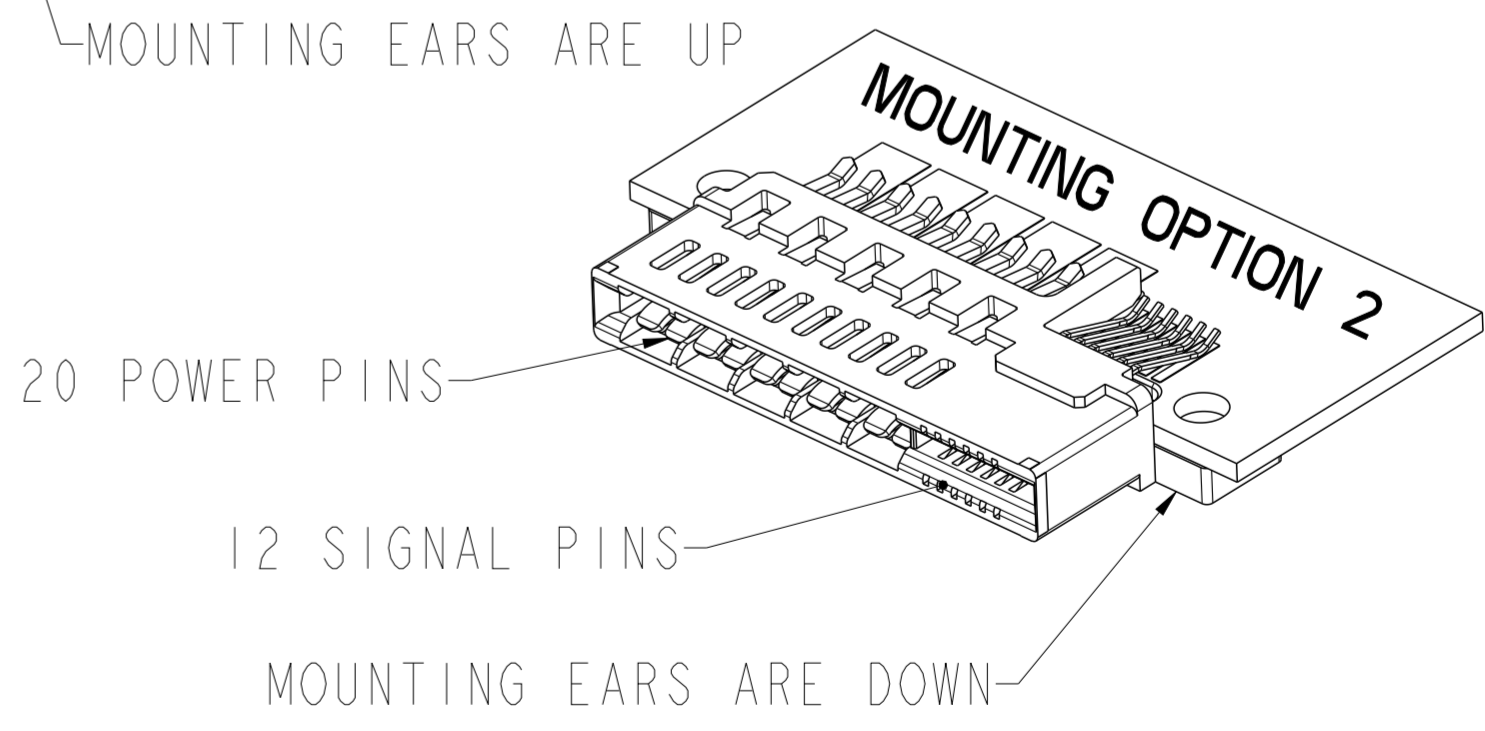
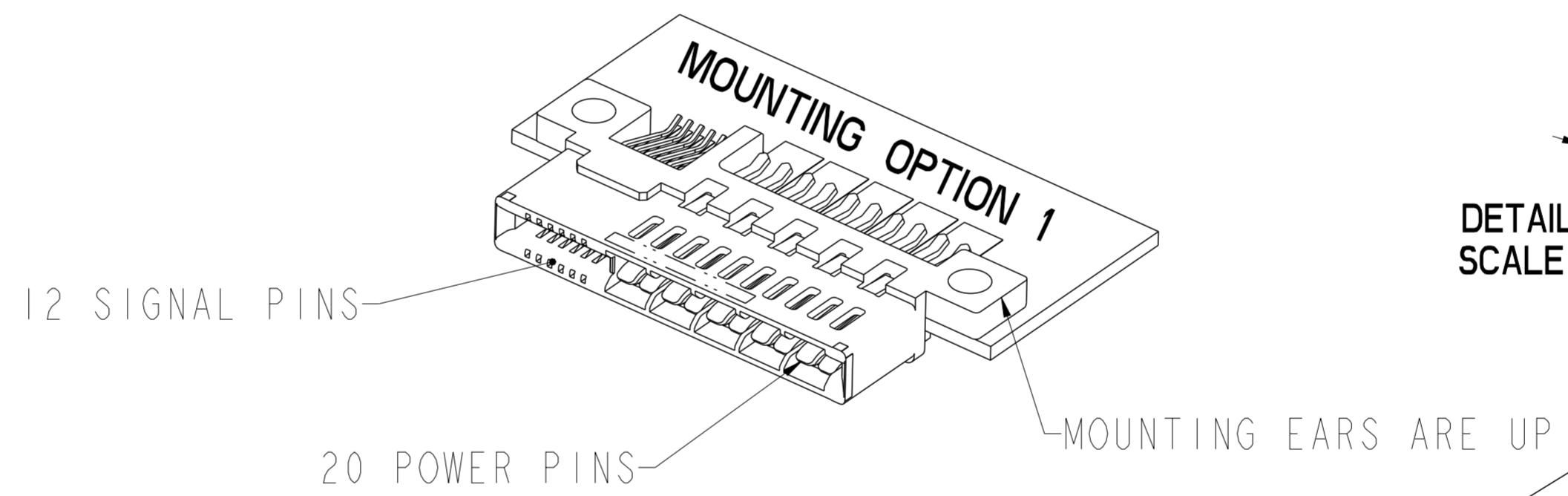
Copyright FCI.

spec ref	-	dr	Wei-Long Zhang	2010/12/20	projection	MM	size	A2	scale	4:1		
tolerance std	-	eng	Wei-Long Zhang	2011/12/14			ecn no	ELX-DG-008860-1	rel level	Released		
	TOLERANCES UNLESS OTHERWISE SPECIFIED	chr	Jon Qin	2011/12/15								
		appr	Pai-Ming Zheng	2011/12/15								
surface	✓				product family	CARD EDGE	title	HPCE-STRADDLE MT (20P-12S) (RECEPTACLE)	div no	10116809	rev	C
		linear	0.X	±0.3	www.fci.com	cat. no.	Product - Customer Drw	sheet 3 of 4				
			0.XX	±0.1								
			0.XXX	±0.05								
		angular	0°	±°								

PART NUMBER	FEATURE C HOST BOARD ALIGNMENT KEY (SEE NOTE 8)	FEATURE A MOUNTING EARS	FEATURE B FRONT POLARIZATION KEY
10116809-001LF	YES	YES	NO
10116809-002LF		YES	YES
10116809-003LF		NO	NO
10116809-004LF		NO	YES
10116809-005LF	NO	YES	NO
10116809-006LF		YES	YES
10116809-007LF		NO	NO
10116809-008LF		NO	YES



DETAIL SCALE A 4:1



NOTES:

- CONNECTOR MATERIALS:
HOUSING: HIGH TEMPERATURE THERMAL PLASTIC, BLACK
UL 94V-0 COMPLIANT
CONTACTS: HIGH PERFORMANCE COPPER ALLOY.
- CONTACT FINISH REF. GS-12-604 SECTION 5.2.
- PRODUCT SPECIFICATION: GS-12-604.
- APPLICATION SPECIFICATION: GS-20-128.
- PRODUCT MARKING (FCI PART NUMBER & DATE CODE) ON HOUSING IN AREA SHOWN.
- PACKAGING MEETS FCI SPECIFICATION GS-14-937.
- HOUSING COMPONENT WILL WITHSTAND EXPOSURE TO 260°C PEAK TEMPERATURE FOR 60 SECONDS IN A CONVECTION, INFRA-RED, OR VAPOR PHASE REFLOW OVEN.
- HOST BOARD ALIGNMENT KEY IS RECOMMENDED TO ENSURE PROPER ALIGNMENT OF SOLDER TAILS WITH HOST BOARD PADS.

spec ref	-	dr	Wei-Long Zhang	2010/12/20	projection	MM	size	A2	scale	4:1		
tolerance std	-	eng	Wei-Long Zhang	2011/12/14			ecn no	ELX-DG-008860-1	rel level	Released		
		chr	Jon Qin	2011/12/15								
		appr	Pei-Ming Zheng	2011/12/15	product family	CARD EDGE						
surface	✓	linear	0.X	±0.3		title HPCE-STRADDLE MT (20P-12S) (RECEPTACLE)	dwg no 10116809	rev C	Product - Customer Drw			
			0.XX	±0.1					www.fci.com	cat. no.		sheet 4 of 4
		angular	0°	±0°								

Copyright FCI. FCI