



Chipsmall Limited consists of a professional team with an average of over 10 year of expertise in the distribution of electronic components. Based in Hongkong, we have already established firm and mutual-benefit business relationships with customers from,Europe,America and south Asia,supplying obsolete and hard-to-find components to meet their specific needs.

With the principle of “Quality Parts,Customers Priority,Honest Operation,and Considerate Service”,our business mainly focus on the distribution of electronic components. Line cards we deal with include Microchip,ALPS,ROHM,Xilinx,Pulse,ON,Everlight and Freescale. Main products comprise IC,Modules,Potentiometer,IC Socket,Relay,Connector.Our parts cover such applications as commercial,industrial, and automotives areas.

We are looking forward to setting up business relationship with you and hope to provide you with the best service and solution. Let us make a better world for our industry!



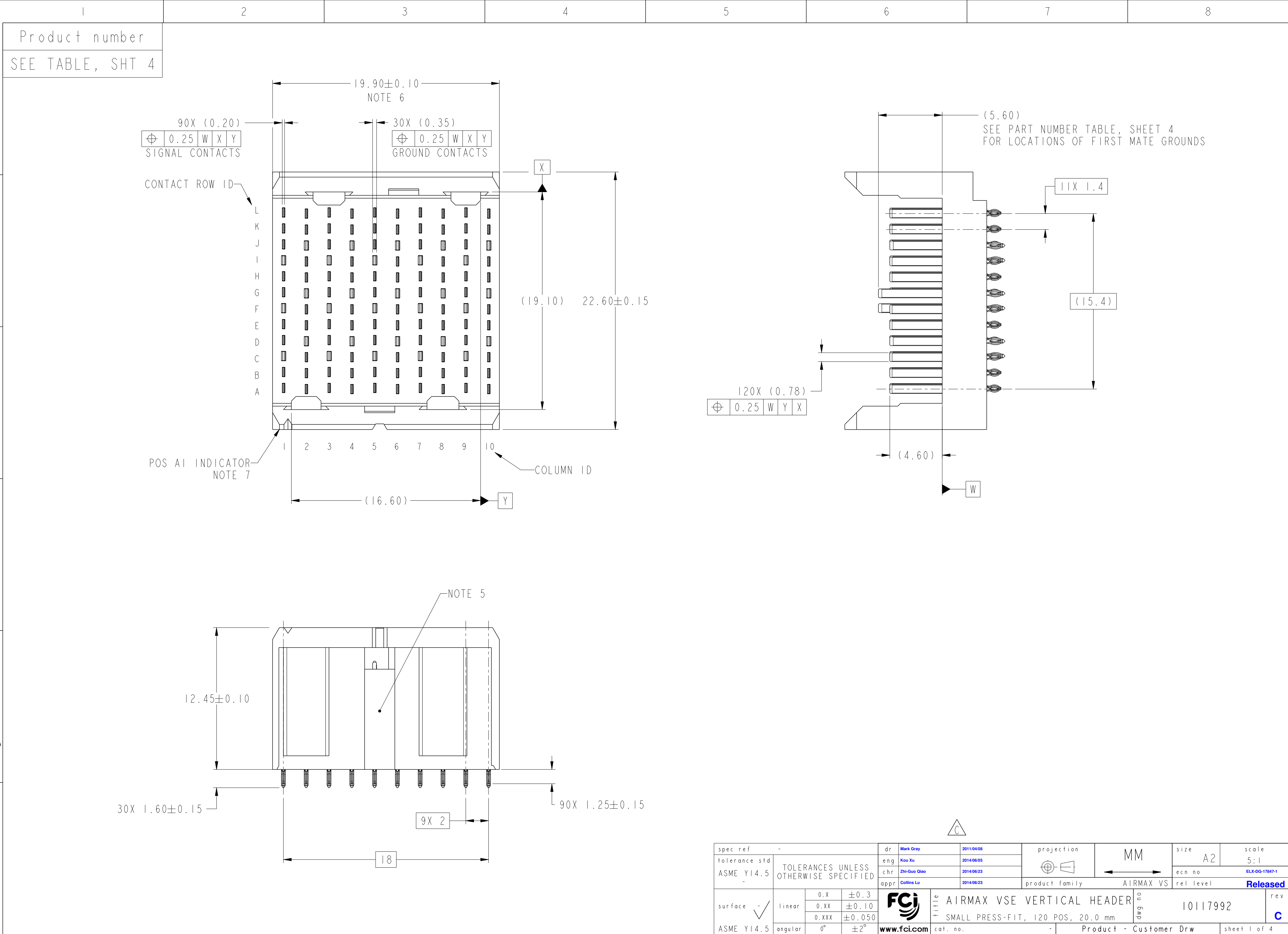
Contact us

Tel: +86-755-8981 8866 Fax: +86-755-8427 6832

Email & Skype: info@chipsmall.com Web: www.chipsmall.com

Address: A1208, Overseas Decoration Building, #122 Zhenhua RD., Futian, Shenzhen, China





spec ref	-	dr	Mark Gray	2011/04/08	projection	MM	size	A2	scale	5:1
tolerance std	ASME Y14.5	eng	Kou Xu	2014/06/05	chr	Zhi-Guo Qiao	ecn no	ELX-DG-17847-1	rel level	Released
surface	✓	appr	Collins Lu	2014/06/23	product family	AIRMAX VS	cat. no.	10117992	rev	C
ASME Y14.5	TOLERANCES UNLESS OTHERWISE SPECIFIED	www.fci.com	cat. no.	-	Product - Customer Drw	sheet 1 of 4				

(22.40)
PROTECTIVE CAP WIDTH

(16.45)





VIEWS SHOWN WITH
PROTECTIVE COVER INSTALLED

NOTE 12

NOTE 13



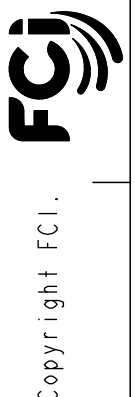
Copyright FCI.

spec ref -				dr Mark Gray		2011/04/08		projection		MM		size A2		scale 5:1						
tolerance std				eng Kou Xu		2014/06/05						ecn no		ELX-DG-17847-1						
ASME Y14.5				chr Zhi-Guo Qiao		2014/06/23						rel level		Released						
				appr Collins Lu		2014/06/23		product family		AIRMAX VS										
surface 		linear		0.X	±0.3				title		AIRMAX VSE VERTICAL HEADER		dwg no		10117992		rev		C	
		0.XX		±0.10																
		0.XXX		±0.050																
ASME Y14.5		angular		0°	±2°		www.fci.com		cat. no.		-		Product - Customer Drw		sheet 2 of 4					

PDS: Rev :C

STATUS:Released

Printed: Jun 24, 2014



spec ref -		dr Mark Gray		2011/04/06		projection				MM		size A2		scale 3:1	
tolerance std ASME Y14.5 -		TOLERANCES UNLESS OTHERWISE SPECIFIED		eng Kou Xu		2014/06/05						ecn no ELXQ-071847-1			
		chr Zhi-Guo Qiao		2014/06/23								rel level		Released	
		appr Collins Lu		2014/06/23		product family		AIRMAX VS							
surface ✓		linear		0.X ±0.3		FCI		title AIRMAX VSE VERTICAL HEADER		dwg no 10117992		rev C			
				0.XXX ±0.10											
				0.XXX ±0.050											
ASME Y14.5		angular 0°		±0°		www.fci.com		cat. no.		Product - Customer Drw		sheet 3 of 4			

Printed: Jun 24, 2014

