



Chipsmall Limited consists of a professional team with an average of over 10 year of expertise in the distribution of electronic components. Based in Hongkong, we have already established firm and mutual-benefit business relationships with customers from,Europe,America and south Asia,supplying obsolete and hard-to-find components to meet their specific needs.

With the principle of "Quality Parts,Customers Priority,Honest Operation,and Considerate Service",our business mainly focus on the distribution of electronic components. Line cards we deal with include Microchip,ALPS,ROHM,Xilinx,Pulse,ON,Everlight and Freescale. Main products comprise IC,Modules,Potentiometer,IC Socket,Relay,Connector.Our parts cover such applications as commercial,industrial, and automotives areas.

We are looking forward to setting up business relationship with you and hope to provide you with the best service and solution. Let us make a better world for our industry!



## Contact us

Tel: +86-755-8981 8866 Fax: +86-755-8427 6832

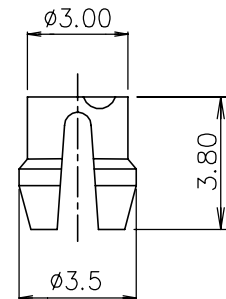
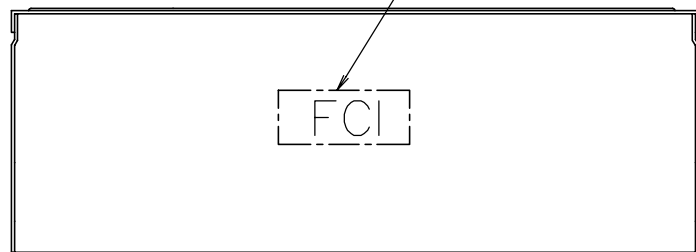
Email & Skype: info@chipsmall.com Web: www.chipsmall.com

Address: A1208, Overseas Decoration Building, #122 Zhenhua RD., Futian, Shenzhen, China

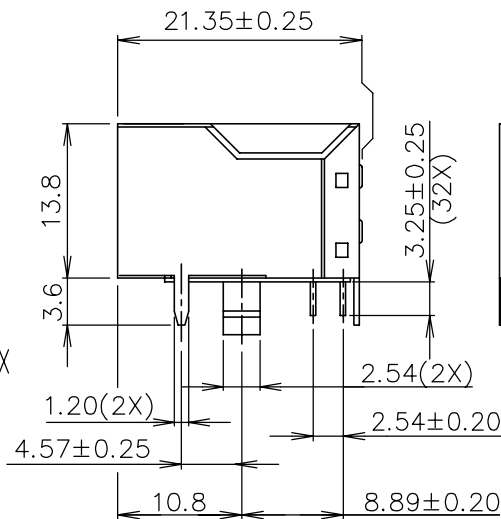
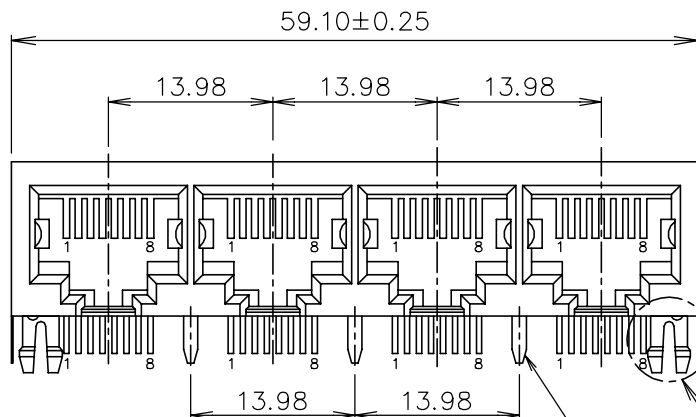




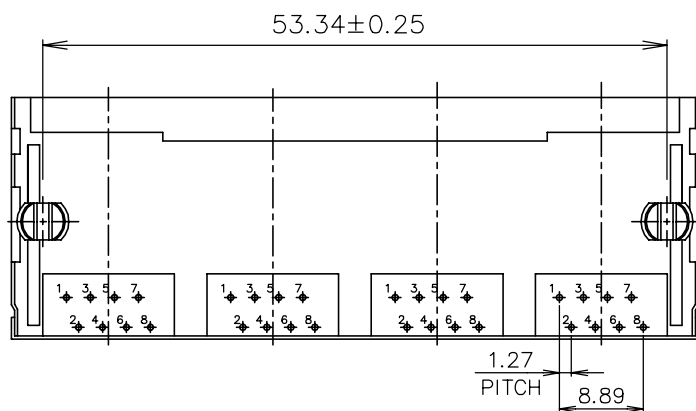
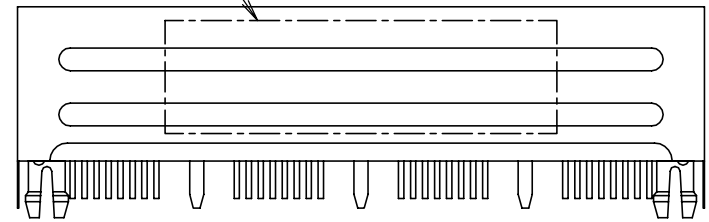
LOGO(SEE NOTE 3)



DETAIL X



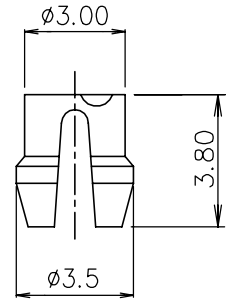
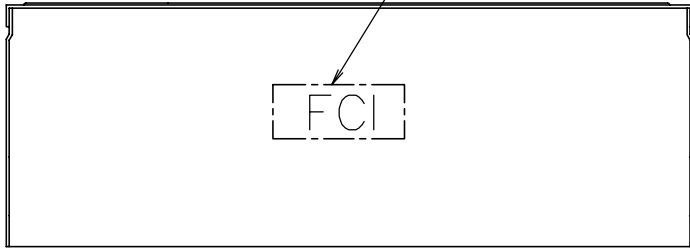
PRINT P/N & DATE CODE (SEE NOTE 4)



mat'l. code		surface ASME Y14.5	tolerance ASME Y14.5	projection MM [INCH]	product family GANGED MJACK	
ltr	ecn no	dr	date	tolerances unless otherwise specified	title CAT 3 MULTI-PORTS TAB DOWN 1x4 WITH SHIELD, W/O LED	
A		WL	11/04/11	angles X.X±0.25 X.XX±0.13 X°±1'		
		dr	WENDY CHEN	05/03/11	dwg no 10118062 sheet 1 of 4 size A4	
		enr	WENDY CHEN	05/03/11		
		chr	WENDY CHEN	05/03/11		
		appd	GARY HSIEH	05/03/11		
sheet index	revision sheet	A	A	A	A	type CUSTOMER Drawing
		1	2	3	4	

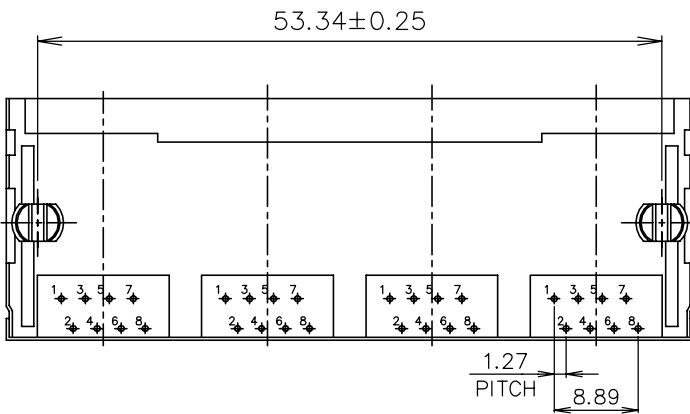
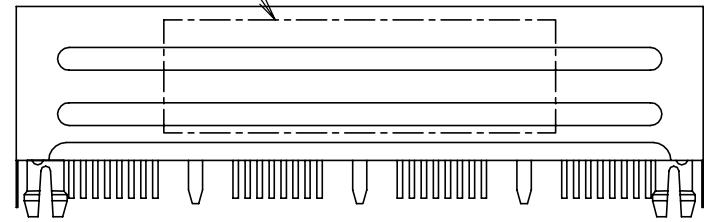
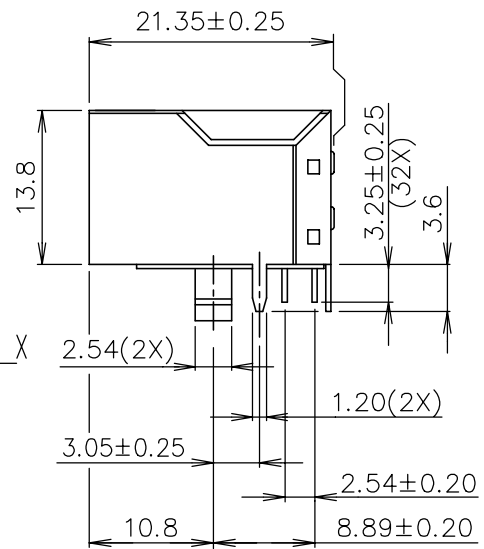
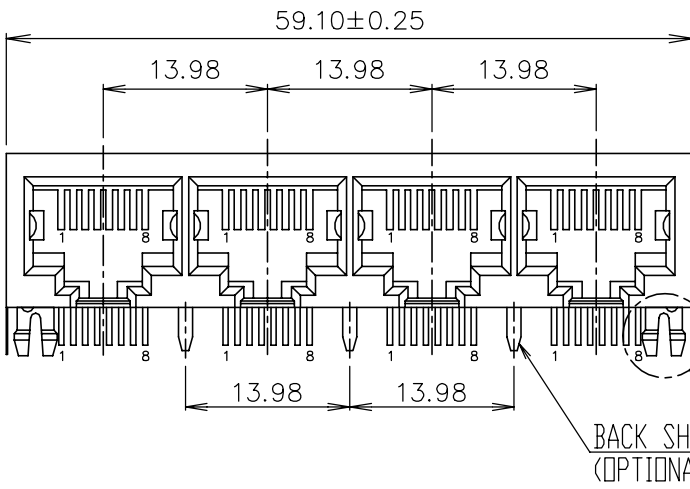


LOGO(SEE NOTE 3)

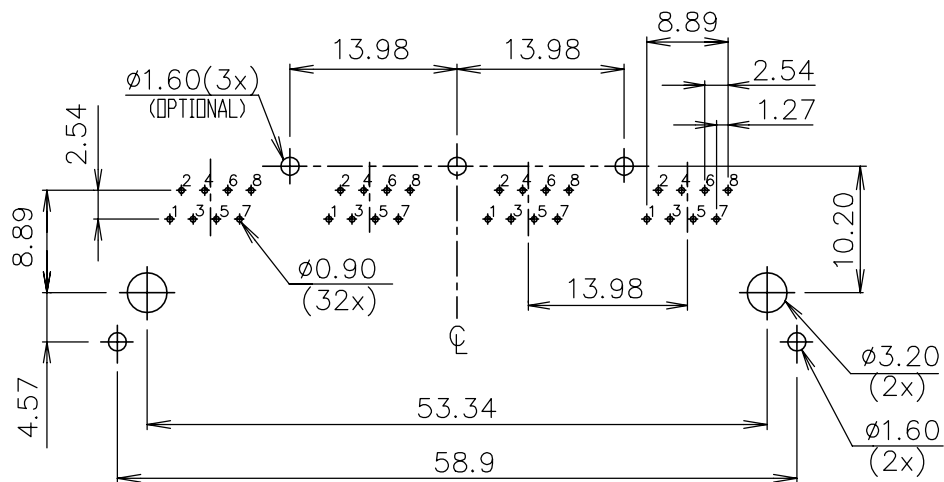


DETAIL X

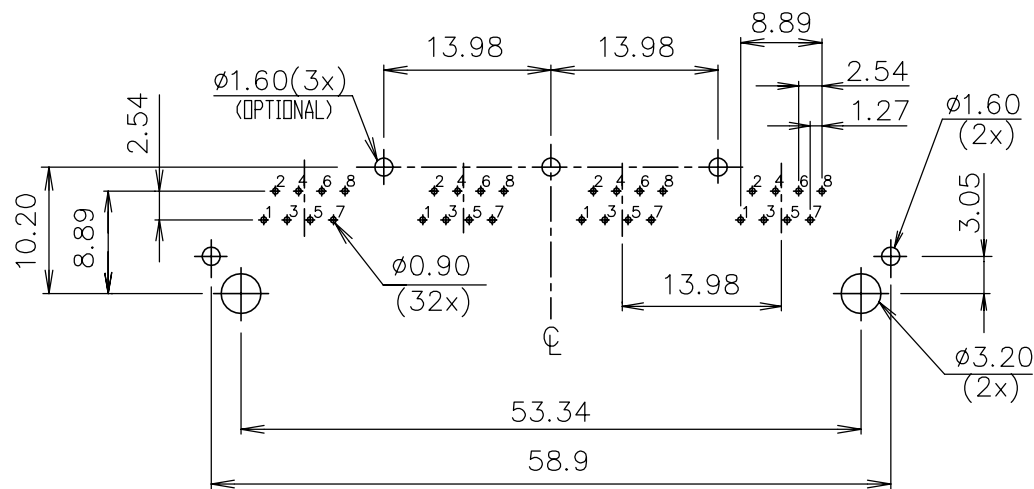
PRINT P/N & DATE CODE  
(SEE NOTE 4)



mat'l. code		surface ASME Y14.5	tolerance ASME Y14.5	projection 	product family GANGED MJACK
ltr	ecn no	dr	date	tolerances unless otherwise specified	title CAT 3 MULTI-PORTS TAB DOWN 1x4 WITH SHIELD, W/O LED
A				angles X.X±0.25 X.XX±0.13 X°±1'	
				scale MM [INCH]	sheet 2 of 4 size A4
				dr WENDY CHEN 05/03/11 enr WENDY CHEN 05/03/11 chr WENDY CHEN 05/03/11 appd GARY HSIEH 05/03/11	
					dwg no 10118062
					type CUSTOMER Drawing
sheet index	revision sheet				



RECOMMENDED PCB LAYOUT  
 RECOMMENDED PCB THICKNESS: 1.6mm  
 TOLERANCE: ±0.05 (TOP VIEW)



RECOMMENDED PCB LAYOUT  
 RECOMMENDED PCB THICKNESS: 1.6mm  
 TOLERANCE: ±0.05 (TOP VIEW)

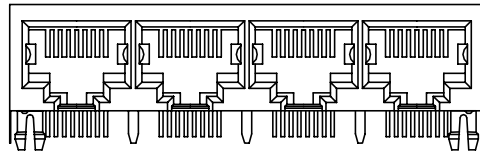
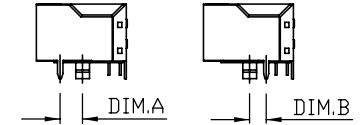
mat'l. code		surface ASME Y14.5 ✓		tolerance ASME Y14.5		projection [Symbol]		product family GANGED MJACK	
ltr		ecn no		dr		date		title CAT 3 MULTI-PORTS TAB DOWN 1x4 WITH SHIELD, W/O LED	
A								scale MM [INCH]	
		angles		X.X±0.25		X.XX±0.13		sheet 3 of 4	
		X*±1°		X.XXX±0.05				size A4	
		dr		WENDY CHEN		05/03/11		dwg no 10118062	
		enr		WENDY CHEN		05/03/11		type CUSTOMER Drawing	
		chr		WENDY CHEN		05/03/11		FCI	
		appd		GARY HSIEH		05/03/11			
sheet index		revision sheet							

NOTE:

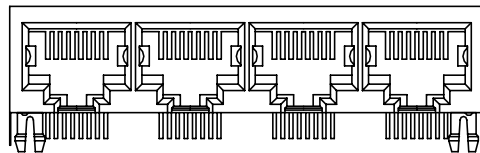
1. MATERIAL:  
HOUSING: HIGH TEMPERATURE THERMOPLASTIC , UL94V-0  
COLOR: BLACK.  
CONTACTS: COPPER ALLOY.  
SHIELD: COPPER ALLOY.
2. FINISH:  
CONTACTS: 50u" MIN. NICKEL UNDER PLATED OVER ALL.  
SELECTIVE GOLD PLATED ON CONTACT AREA,  
1u" GOLD PLATED ON SOLDER TAIL.  
SHIELD: 20u" MIN. NICKEL OVER ALL.
3. LASER MARK FCI LOGO ON THE TOP OF SHIELD.
4. "DATE CODE" DESCRIPTION:  
XX XX  
WEEK  
YEAR (EX. : 10--2010)
5. PRODUCT PERFORMANCE PER SPEC. : GS-12-0990.
6. PACKING SPEC. : GS-14-2170.
7. THIS PRODUCT MEETS THE EUROPEAN UNION DIRECTIVE AS DESCRIBED IN GS-22-008.
8. THE HOUSING WILL WITHSTAND EXPOSURE TO 260°C PEAK TEMPERATURE FOR 5 SECONDS IN A WAVE SOLDER APPLICATION WITH A CIRCUIT BOARD.

9. PART NUMBER DESCRIPTION:

- 10118062-X X X X X X X LF
- LEAD FREE
  - 0 : RESERVED (NOT USED)
  - PACKAGING  
1 : TRAY
  - OPTIONAL BACK SHIELD TAB  
0 : WITHOUT BACK SHIELD TAB  
3 : WITH 3 BACK SHIELD TABS
  - OPTIONAL RIGHT / LEFT SHIELD TAB  
1 : DIM.A=4.57  
5 : DIM.B=3.05
  - OPTIONAL PANEL GROUND  
0 : WITHOUT PANEL GROUND
  - LED COLOR  
0 : WITHOUT LED
  - CONTACT AREA PLATING  
1 : 15u" GOLD PLATING  
2 : 30u" GOLD PLATING  
5 : 1u" GOLD FLASH PLATING



10118062-XXXX3XXLF  
WITH 3 BACK SHIELD TABS



10118062-XXXX0XXLF  
WITHOUT BACK SHIELD TAB

mat'l. code		surface ASME Y14.5	tolerance ASME Y14.5	projection MM [INCH]	product family GANGED MJACK
ltr	ecn no	dr	date	tolerances unless otherwise specified	title CAT 3 MULTI-PORTS TAB DOWN 1x4 WITH SHIELD, W/O LED
A				angles X.X±0.25 X.XX±0.13 X°±1'	scale
		dr	WENDY CHEN	05/03/11	dwg no 10118062
		enr	WENDY CHEN	05/03/11	sheet 4 of 4
		chr	WENDY CHEN	05/03/11	size A4
		appd	GARY HSIEH	05/03/11	type CUSTOMER Drawing
sheet index	revision sheet				