



Chipsmall Limited consists of a professional team with an average of over 10 year of expertise in the distribution of electronic components. Based in Hongkong, we have already established firm and mutual-benefit business relationships with customers from,Europe,America and south Asia,supplying obsolete and hard-to-find components to meet their specific needs.

With the principle of "Quality Parts,Customers Priority,Honest Operation,and Considerate Service",our business mainly focus on the distribution of electronic components. Line cards we deal with include Microchip,ALPS,ROHM,Xilinx,Pulse,ON,Everlight and Freescale. Main products comprise IC,Modules,Potentiometer,IC Socket,Relay,Connector.Our parts cover such applications as commercial,industrial, and automotives areas.

We are looking forward to setting up business relationship with you and hope to provide you with the best service and solution. Let us make a better world for our industry!



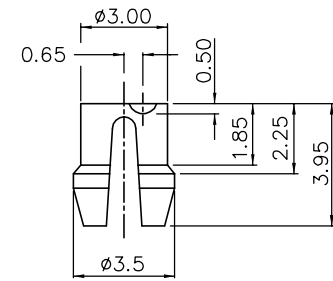
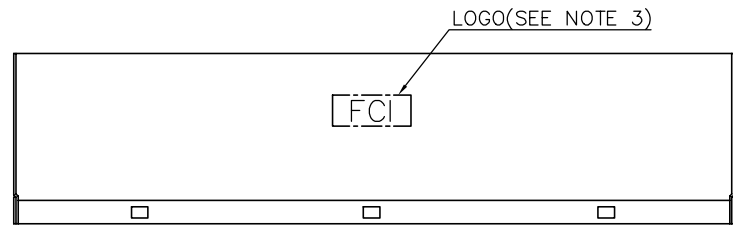
Contact us

Tel: +86-755-8981 8866 Fax: +86-755-8427 6832

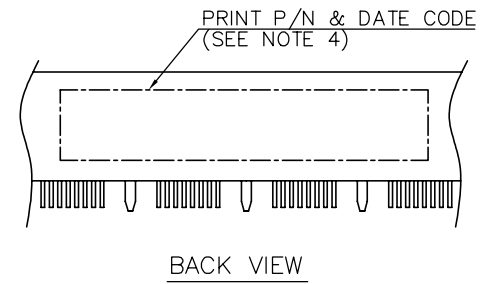
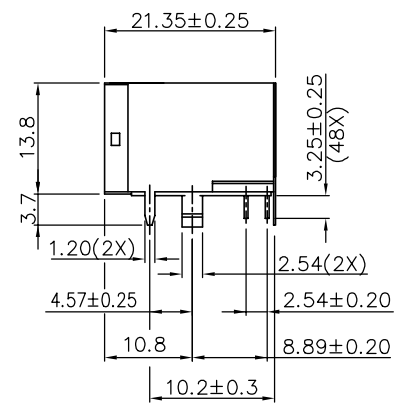
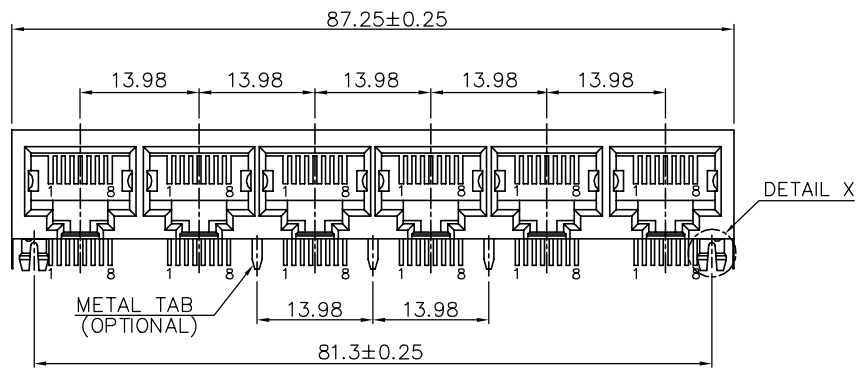
Email & Skype: info@chipsmall.com Web: www.chipsmall.com

Address: A1208, Overseas Decoration Building, #122 Zhenhua RD., Futian, Shenzhen, China

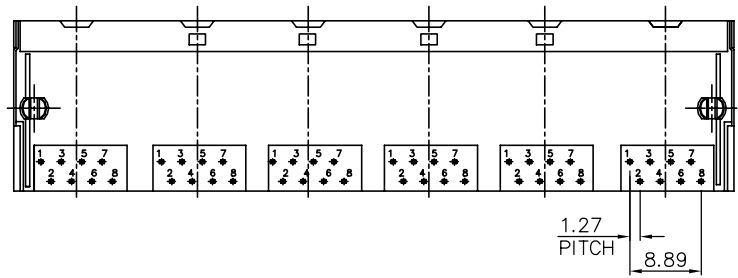




DETAIL X

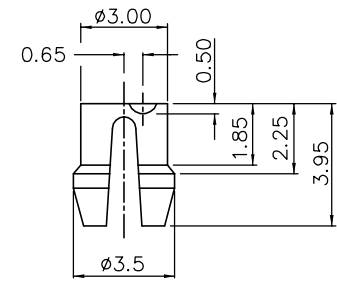
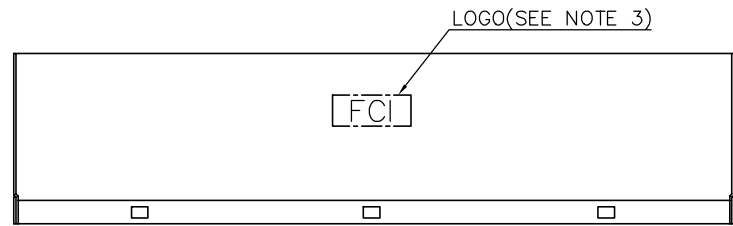


BACK VIEW

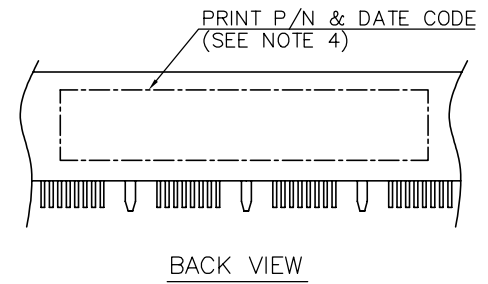
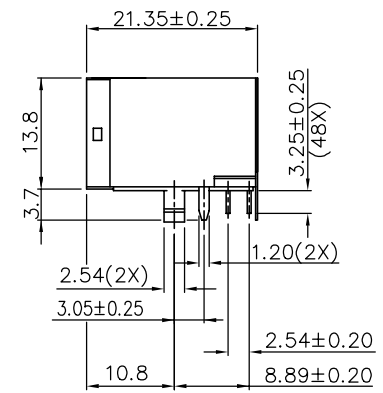
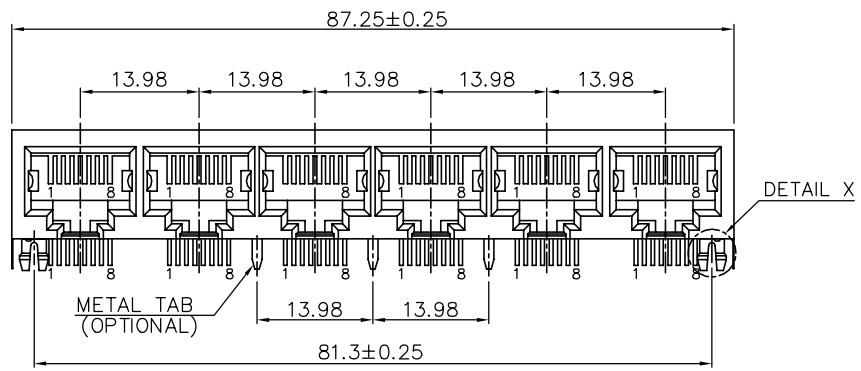


mat'l. code		surface ASME Y14.5		tolerance ASME Y14.5		projection		product family	
ltr		ecn no		dr		date		GANGED MJACK	
A		WL		11/04/11		11/04/11		title	
						angles		CAT 3 MULTI-PORTS TAB DOWN	
						X.X±0.25		1x6 WITH SHIELD, W/O LED	
						X.XX±0.13		scale	
						X.XXX±0.05		MM	
						dr		[INCH]	
						enr		scale	
						WENDY CHEN		05/03/11	
						chr		05/03/11	
						WENDY CHEN		05/03/11	
						appd		05/03/11	
						GARY HSIEH		05/03/11	
sheet index		revision sheet		A A		A A		FCI	
		1 2		A A		3 4		type	
								CUSTOMER Drawing	

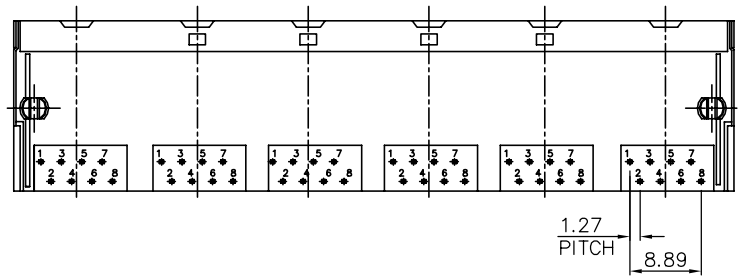
dwg no 10118063 sheet 1 of 4 size A4



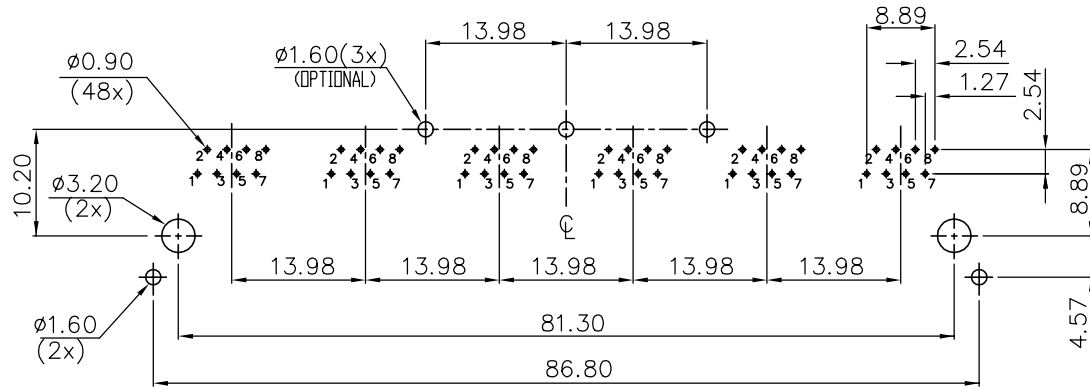
DETAIL X



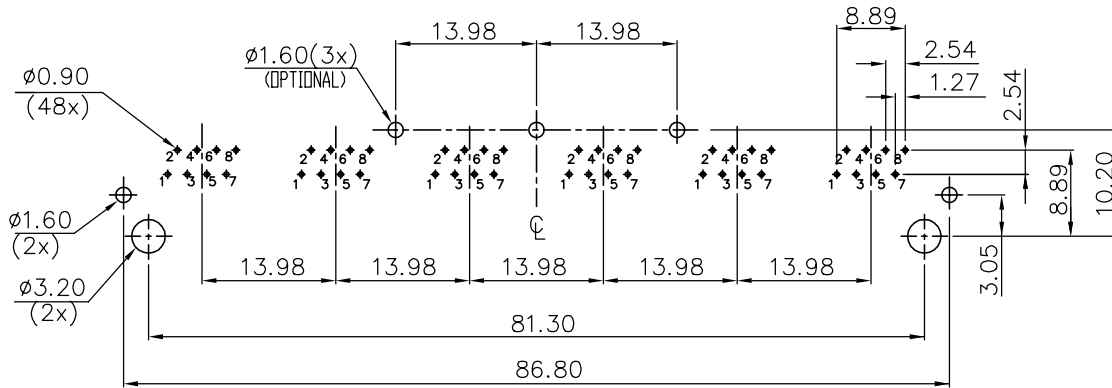
BACK VIEW



mat'l. code		surface ASME Y14.5	tolerance ASME Y14.5	projection MM [INCH]	product family GANGED MJACK
ltr	ecn no	dr	date	tolerances unless otherwise specified	title CAT 3 MULTI-PORTS TAB DOWN 1x6 WITH SHIELD, W/O LED
A				angles X.X±0.25 X.XX±0.13 X*±1*	scale
				dr WENDY CHEN 05/03/11	FCI
				enr WENDY CHEN 05/03/11	dwg no 10118063
				chr WENDY CHEN 05/03/11	sheet 2 of 4
				appd GARY HSIEH 05/03/11	size A4
sheet index	revision sheet				type CUSTOMER Drawing



RECOMMENDED PCB LAYOUT
 RECOMMENDED PCB THICKNESS: 1.6mm
 TOLERANCE: ±0.05 (TOP VIEW)



RECOMMENDED PCB LAYOUT
 RECOMMENDED PCB THICKNESS: 1.6mm
 TOLERANCE: ±0.05 (TOP VIEW)

mat'l. code		surface ASME Y14.5 ✓	tolerance ASME Y14.5	projection [Symbol]	product family GANGED MJACK
ltr	ecn no	dr	date	tolerances unless otherwise specified	title CAT 3 MULTI-PORTS TAB DOWN 1x6 WITH SHIELD, W/O LED
A				angles X.X±0.25 X.XX±0.13 X*±1* X.XXX±0.05	
		dr	WENDY CHEN	05/03/11	dwg no 10118063
		enr	WENDY CHEN	05/03/11	
		chr	WENDY CHEN	05/03/11	sheet 3 of 4 size A4
		appd	GARY HSIEH	05/03/11	
sheet index		revision sheet			type CUSTOMER Drawing





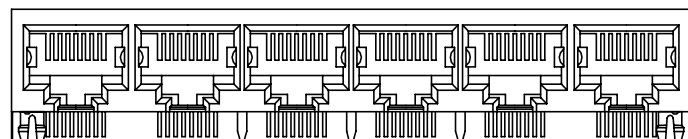
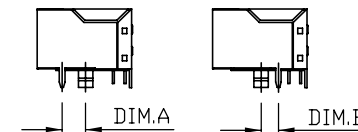
NOTE:

- MATERIAL:
HOUSING: HIGH TEMPERATURE THERMOPLASTIC, UL94V-0
COLOR: BLACK.
CONTACTS: COPPER ALLOY.
SHIELD: COPPER ALLOY.
- FINISH:
CONTACTS: 50u" MIN. NICKEL UNDER PLATED OVER ALL.
SELECTIVE GOLD PLATED ON CONTACT AREA,
1u" GOLD PLATED ON SOLDER TAIL.
SHIELD: 20u" MIN. NICKEL OVER ALL.
- LASER MARK FCI LOGO ON THE TOP OF SHIELD.
- "DATE CODE" DESCRIPTION:

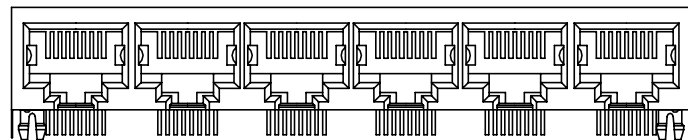
XX	XX	
WEEK		
YEAR (EX. : 10--2010)		
- PRODUCT PERFORMANCE PER SPEC. : GS-12-0990.
- PACKING SPEC. : GS-14-2170.
- THIS PRODUCT MEETS THE EUROPEAN UNION DIRECTIVE AS DESCRIBED IN GS-22-008.
- THE HOUSING WILL WITHSTAND EXPOSURE TO 260°C PEAK TEMPERATURE FOR 5 SECONDS IN A WAVE SOLDER APPLICATION WITH A CIRCUIT BOARD.

9. PART NUMBER DESCRIPTION:

- 10118063-X X X X X X X LF
- LEAD FREE
 - 0 : RESERVED (NOT USED)
 - PACKAGING
1 : TRAY
 - OPTIONAL BACK SHIELD TAB
0 : WITHOUT BACK SHIELD TAB
3 : WITH 3 BACK SHIELD TABS
 - OPTIONAL RIGHT / LEFT SHIELD TAB
1 : DIM.A=4.57
5 : DIM.B=3.05
 - OPTIONAL PANEL GROUND
0 : WITHOUT PANEL GROUND
 - LED COLOR
0 : WITHOUT LED
 - CONTACT AREA PLATING
1 : 15u" GOLD PLATING
2 : 30u" GOLD PLATING
5 : 1u" GOLD FLASH PLATING



10118063-XXXX3XXLF
WITH 3 BACK SHIELD TABS



10118063-XXXX0XXLF
WITHOUT BACK SHIELD TAB

mat'l. code		surface ASME Y14.5	tolerance ASME Y14.5	projection MM [INCH]	product family GANGED MJACK
ltr	ecn no	dr	date	tolerances unless otherwise specified	title CAT 3 MULTI-PORTS TAB DOWN 1x6 WITH SHIELD, W/O LED
A				angles X.X±0.25 X.XX±0.13 X'±1"	
				dr	scale
				enr	sheet 4 of 4
				chr	size A4
				appd	10118063
sheet index		revision sheet		type CUSTOMER Drawing	