



Chipsmall Limited consists of a professional team with an average of over 10 year of expertise in the distribution of electronic components. Based in Hongkong, we have already established firm and mutual-benefit business relationships with customers from,Europe,America and south Asia,supplying obsolete and hard-to-find components to meet their specific needs.

With the principle of “Quality Parts,Customers Priority,Honest Operation,and Considerate Service”,our business mainly focus on the distribution of electronic components. Line cards we deal with include Microchip,ALPS,ROHM,Xilinx,Pulse,ON,Everlight and Freescale. Main products comprise IC,Modules,Potentiometer,IC Socket,Relay,Connector.Our parts cover such applications as commercial,industrial, and automotives areas.

We are looking forward to setting up business relationship with you and hope to provide you with the best service and solution. Let us make a better world for our industry!



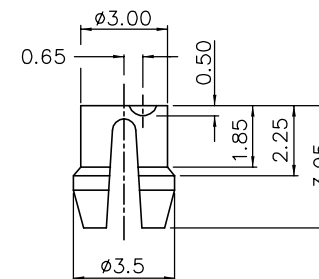
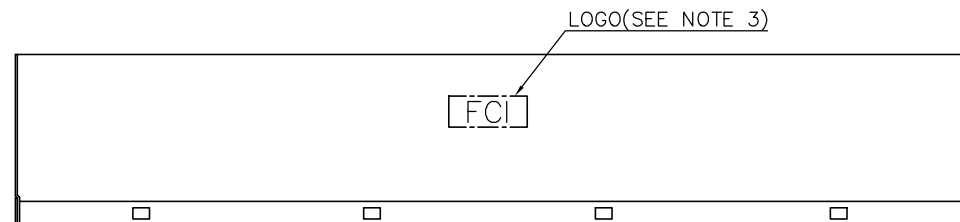
Contact us

Tel: +86-755-8981 8866 Fax: +86-755-8427 6832

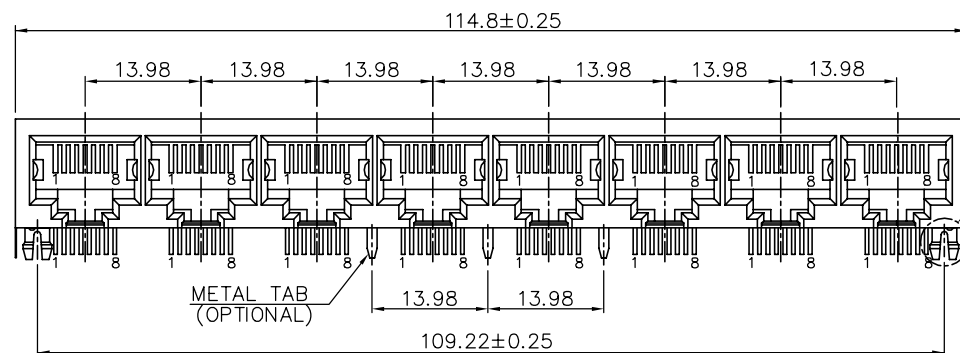
Email & Skype: info@chipsmall.com Web: www.chipsmall.com

Address: A1208, Overseas Decoration Building, #122 Zhenhua RD., Futian, Shenzhen, China

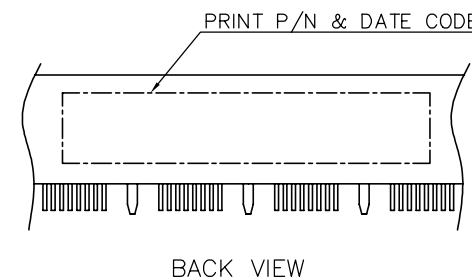
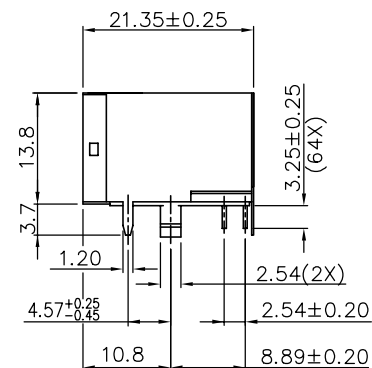




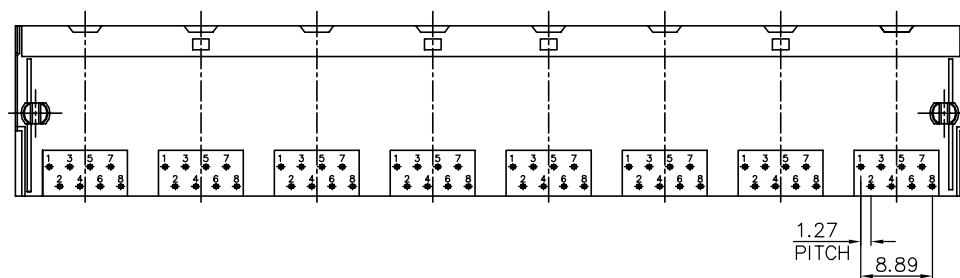
DETAIL X



DETAIL X



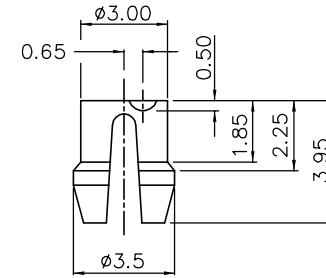
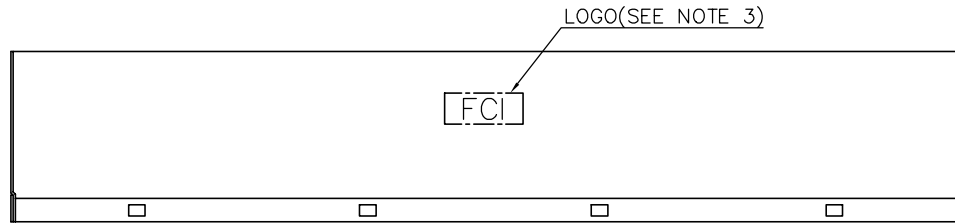
BACK VIEW



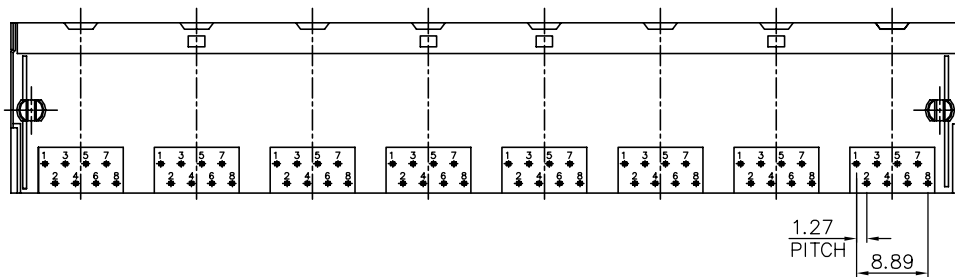
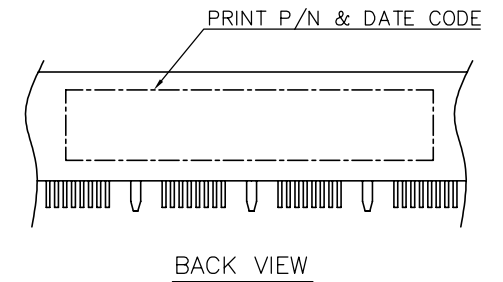
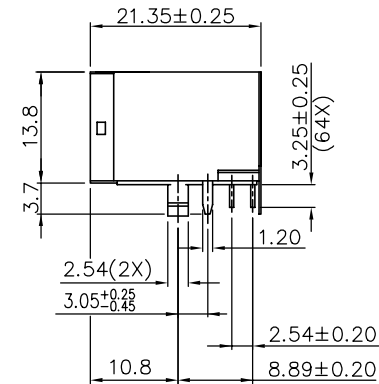
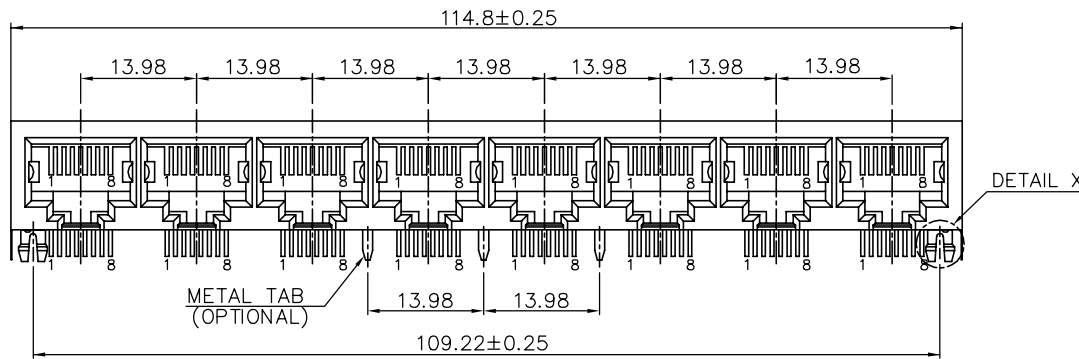
1.27 PITCH
8.89

mat'l. code		surface ASME Y14.5		tolerance ASME Y14.5		projection		product family	
ltr		ecn no		dr		date		GANGED MJACK	
A		WL		11/04/11		angles		title	
						X.X±0.25		CAT 3 MULTI-PORTS TAB DOWN	
						X.XX±0.13		1x8 WITH SHIELD, W/O LED	
						X.XXX±0.05		scale	
				dr		WENDY CHEN 05/03/11		sheet 1 of 4	
				enr		WENDY CHEN 05/03/11		size	
				chr		WENDY CHEN 05/03/11		A4	
				appd		GARY HSIEH 05/03/11		type	
								CUSTOMER Drawing	
sheet index		revision sheet		A A		A A			
		1 2		A A		3 4			

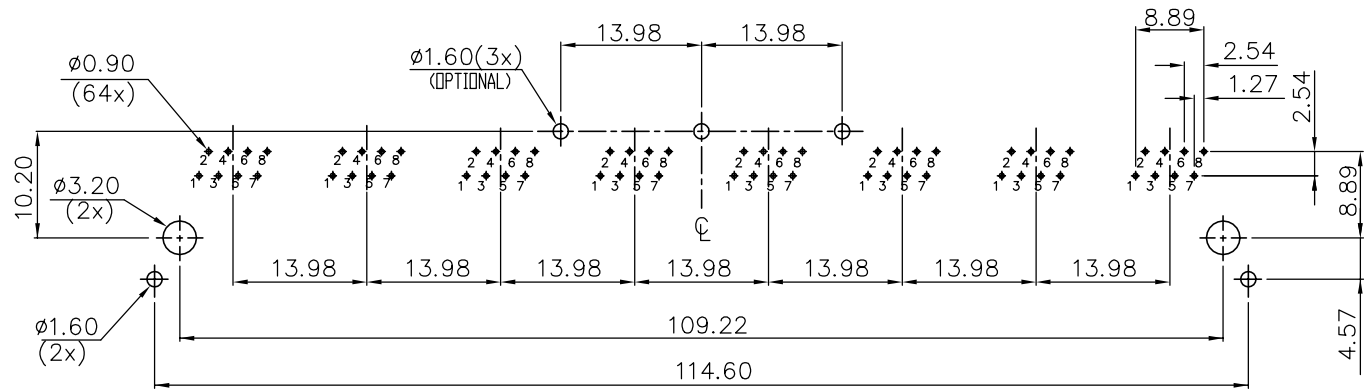




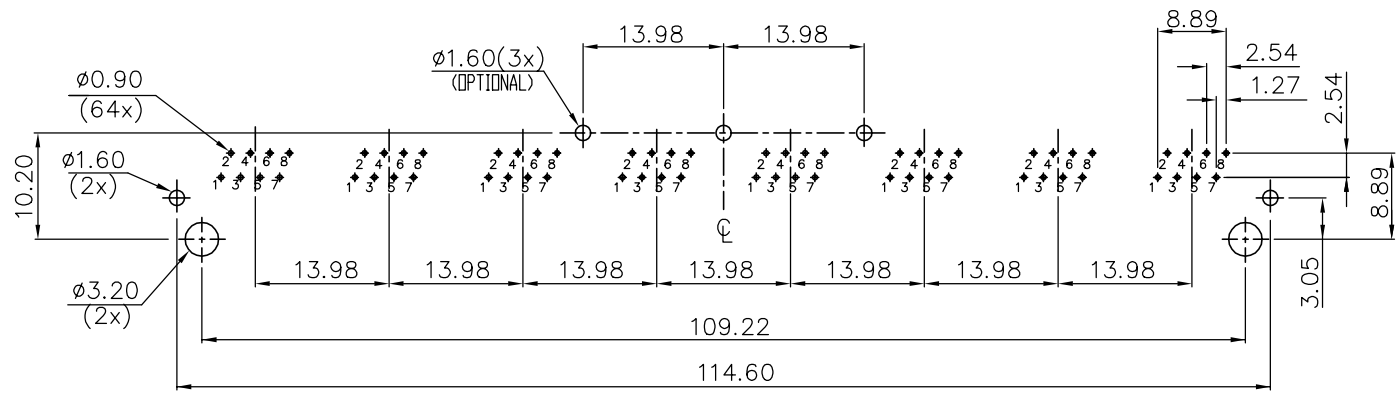
DETAIL X



mat'l. code		surface ASME Y14.5	tolerance ASME Y14.5	projection MM [INCH]	product family GANGED MJACK
ltr	ecn no	dr	date	title CAT 3 MULTI-PORTS TAB DOWN 1x8 WITH SHIELD, W/O LED	
		tolerances unless otherwise specified		scale	
A		angles	X.X±0.25		
		fil	X.XX±0.13		
		X*±1°	X.XXX±0.05		
		dr	WENDY CHEN 05/03/11	FCI	dwg no 10118064
		enr	WENDY CHEN 05/03/11		sheet 2 of 4
		chr	WENDY CHEN 05/03/11		size A4
		appd	GARY HSIEH 05/03/11		type CUSTOMER Drawing
sheet index	revision	sheet			



RECOMMENDED PCB LAYOUT
RECOMMENDED PCB THICKNESS: 1.6mm
TOLERANCE: ±0.05 (TOP VIEW)



RECOMMENDED PCB LAYOUT
RECOMMENDED PCB THICKNESS: 1.6mm
TOLERANCE: ±0.05 (TOP VIEW)

mat'l. code		surface ASME Y14.5 ✓		tolerance ASME Y14.5		projection ⊕		product family GANGED MJACK	
ltr		ecn no		dr		date		title CAT 3 MULTI-PORTS TAB DOWN 1x8 WITH SHIELD, W/O LED	
A								sheet 3 of 4	
		angles		tolerances unless otherwise specified		MM [INCH]		size A4	
		X°±1'		X.X±0.25 X.XX±0.13 X.XXX±0.05		scale		dwg no 10118064	
		dr		WENDY CHEN		05/03/11		type CUSTOMER Drawing	
		enr		WENDY CHEN		05/03/11			
		chr		WENDY CHEN		05/03/11			
		appd		GARY HSIEH		05/03/11			
sheet index		revision sheet							

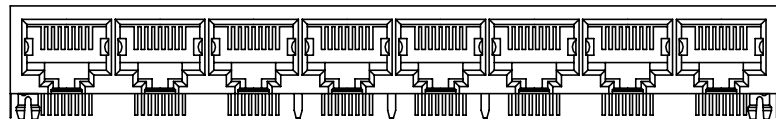
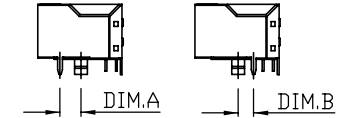
NOTE:

1. MATERIAL:
HOUSING: HIGH TEMPERATURE THERMOPLASTIC, UL94V-0
COLOR: BLACK.
CONTACTS: COPPER ALLOY.
SHIELD: COPPER ALLOY.
2. FINISH:
CONTACTS: 50u" MIN. NICKEL UNDER PLATED OVER ALL.
SELECTIVE GOLD PLATED ON CONTACT AREA,
1u" GOLD PLATED ON SOLDER TAIL.
SHIELD: 20u" MIN. NICKEL OVER ALL.
3. LASER MARK FCI LOGO ON THE TOP OF SHIELD.
4. "DATE CODE" DESCRIPTION:

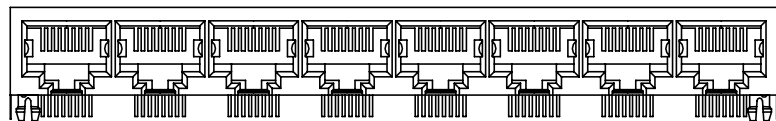
XX	XX	
		WEEK
		YEAR (EX. : 10--2010)
5. PRODUCT PERFORMANCE PER SPEC. : GS-12-0990.
6. PACKING SPEC. : GS-14-2170.
7. THIS PRODUCT MEETS THE EUROPEAN UNION DIRECTIVE AS DESCRIBED IN GS-22-008.
8. THE HOUSING WILL WITHSTAND EXPOSURE TO 260°C PEAK TEMPERATURE FOR 5 SECONDS IN A WAVE SOLDER APPLICATION WITH A CIRCUIT BOARD.

9. PART NUMBER DESCRIPTION:

- 10118064-X X X X X X X LF
- X : LEAD FREE
 - 0 : RESERVED (NOT USED)
 - PACKAGING
 - 1 : TRAY
 - OPTIONAL BACK SHIELD TAB
 - 0 : WITHOUT BACK SHIELD TAB
 - 3 : WITH 3 BACK SHIELD TABS
 - OPTIONAL RIGHT / LEFT SHIELD TAB
 - 1 : DIM.A=4.57
 - 5 : DIM.B=3.05
 - OPTIONAL PANEL GROUND
 - 0 : WITHOUT PANEL GROUND
 - LED COLOR
 - 0 : WITHOUT LED
 - CONTACT AREA PLATING
 - 1 : 15u" GOLD PLATING
 - 2 : 30u" GOLD PLATING
 - 5 : 1u" GOLD FLASH PLATING



10118064-XXXX3XXLF
WITH 3 BACK SHIELD TABS



10118064-XXXX0XXLF
WITHOUT BACK SHIELD TAB

mat'l. code		surface ASME Y14.5 ✓	tolerance ASME Y14.5	projection ⊕	product family GANGED MJACK	
ltr	ecn no	dr	date	tolerances unless otherwise specified		title
A				angles X.X±0.25	MM [INCH]	CAT 3 MULTI-PORTS TAB DOWN 1x8 WITH SHIELD, W/O LED
				X.XX±0.13	scale	
				X*±1*	X.XXX±0.05	dwg no
				dr	WENDY CHEN 05/03/11	sheet 4 of 4
				enr	WENDY CHEN 05/03/11	size
				chr	WENDY CHEN 05/03/11	10118064
				appd	GARY HSIEH 05/03/11	A4
sheet index		revision sheet		type		CUSTOMER Drawing