



Chipsmall Limited consists of a professional team with an average of over 10 year of expertise in the distribution of electronic components. Based in Hongkong, we have already established firm and mutual-benefit business relationships with customers from,Europe,America and south Asia,supplying obsolete and hard-to-find components to meet their specific needs.

With the principle of "Quality Parts,Customers Priority,Honest Operation,and Considerate Service",our business mainly focus on the distribution of electronic components. Line cards we deal with include Microchip,ALPS,ROHM,Xilinx,Pulse,ON,Everlight and Freescale. Main products comprise IC,Modules,Potentiometer,IC Socket,Relay,Connector.Our parts cover such applications as commercial,industrial, and automotives areas.

We are looking forward to setting up business relationship with you and hope to provide you with the best service and solution. Let us make a better world for our industry!



Contact us

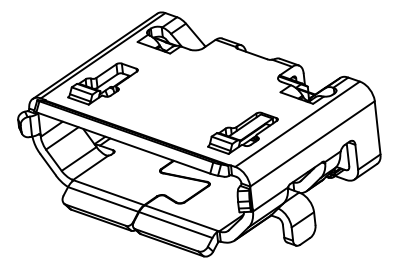
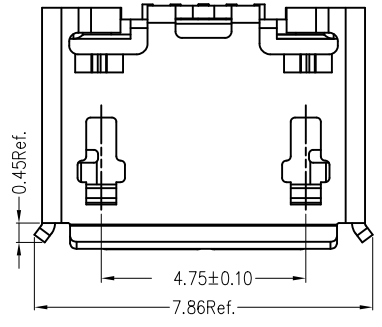
Tel: +86-755-8981 8866 Fax: +86-755-8427 6832

Email & Skype: info@chipsmall.com Web: www.chipsmall.com

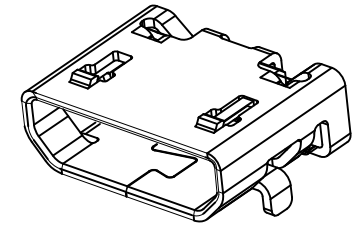
Address: A1208, Overseas Decoration Building, #122 Zhenhua RD., Futian, Shenzhen, China



PART NUMBER
10118193-000XLF



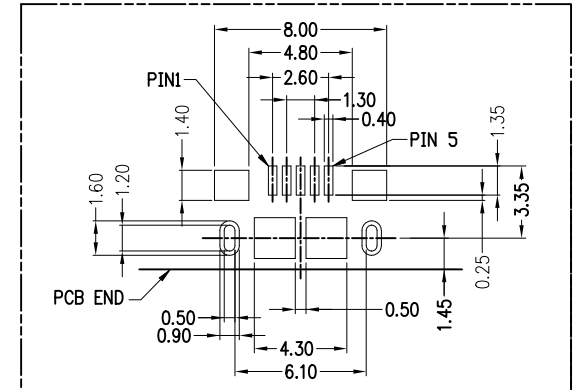
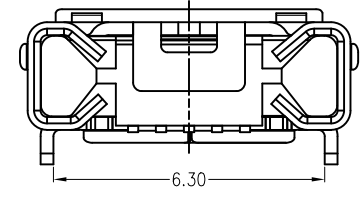
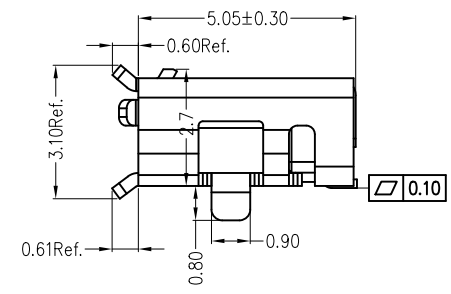
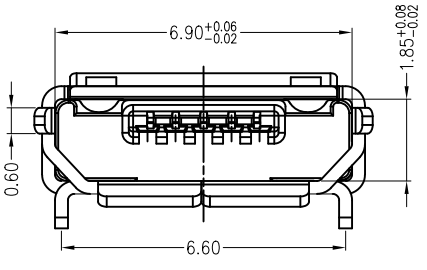
With Flange Style



Without Flange Style $\triangle D$

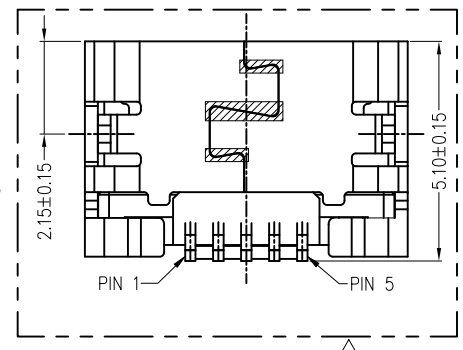
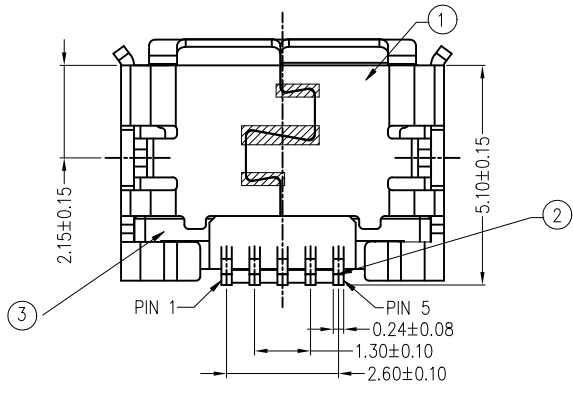
- NOTES:
- MATERIAL:
HOUSING: HIGH THERMOPLASTIC RESIN, UL94V-0, COLOR: BLACK
TERMINAL: COPPER ALLOY
SHELL: STAINLESS
 - FINISH:
CONTACT AREA: GOLD 30 μ MIN. PLATED
CONTACT SOLDER AREA: GOLD 2 μ MIN. PLATED
SHELL: MATTE TIN 80 μ MIN. PLATED
UNDER NICKEL 50 μ MIN. PLATED ALL OVER.
 - PRODUCT SPECIFICATION: GS-12-641.
 - PACKAGING SPECIFICATION: GS-14-2180.
 - THE "LF" MEANS FOR LEAD FREE AND CAN WITHSTAND EXPOSE TO 260°C PEAK TEMPERATURE FOR 10 SECONDS IN IR REFLOW PROCESS.
 - PART NUMBER: 10118193-000 X LF

- 1- WHIT FLANGE
2- WITHOUT FLANGE $\triangle D$



REFERENCE PCB LAYOUT
SCALE 1:2(TOLERANCE: ±0.05)

Item	Title	Q'TY
1	Shell	1
2	Terminal	5
3	InsertMolding	1



Without Flange Style $\triangle D$

mat'l. code		surface	tolerance	projection	product family
		ISO 1302 <input checked="" type="checkbox"/>	ISO 406 <input checked="" type="checkbox"/>	ISO 1101 <input checked="" type="checkbox"/>	HPL 510 USB 2.0
ltr	ecn no	dr	date	tolerances unless otherwise specified	title
A	-	LS	10/21/11	angles linear	MICRO USB B TYPE RECEPTACLE
B	ELX-N-18099	JH	10/21/13	0.X±0.30	
C	ELX-N-20945	Nick	5/22/15	0.XX±0.20	
D	ELX-N-29923	LZ	01/19/18	0.XXX±0.10	
				scale 1:1	dwg no
				appd	sheet 1 of 1
				eng	size
				chr	A3
				appd	type
				Amphenol FCI	Product Customer Drawing
sheet index	revision sheet				