



Chipsmall Limited consists of a professional team with an average of over 10 year of expertise in the distribution of electronic components. Based in Hongkong, we have already established firm and mutual-benefit business relationships with customers from,Europe,America and south Asia,supplying obsolete and hard-to-find components to meet their specific needs.

With the principle of “Quality Parts,Customers Priority,Honest Operation,and Considerate Service”,our business mainly focus on the distribution of electronic components. Line cards we deal with include Microchip,ALPS,ROHM,Xilinx,Pulse,ON,Everlight and Freescale. Main products comprise IC,Modules,Potentiometer,IC Socket,Relay,Connector.Our parts cover such applications as commercial,industrial, and automotives areas.

We are looking forward to setting up business relationship with you and hope to provide you with the best service and solution. Let us make a better world for our industry!



Contact us

Tel: +86-755-8981 8866 Fax: +86-755-8427 6832

Email & Skype: info@chipsmall.com Web: www.chipsmall.com

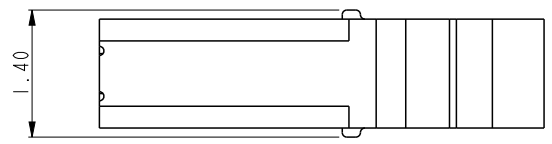
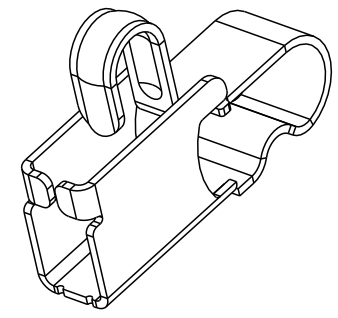
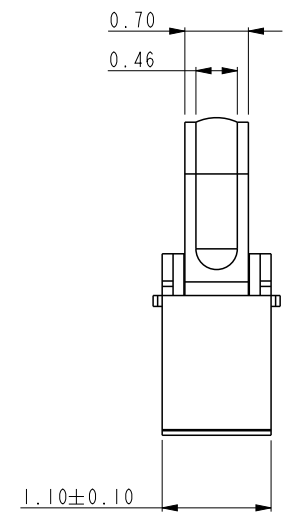
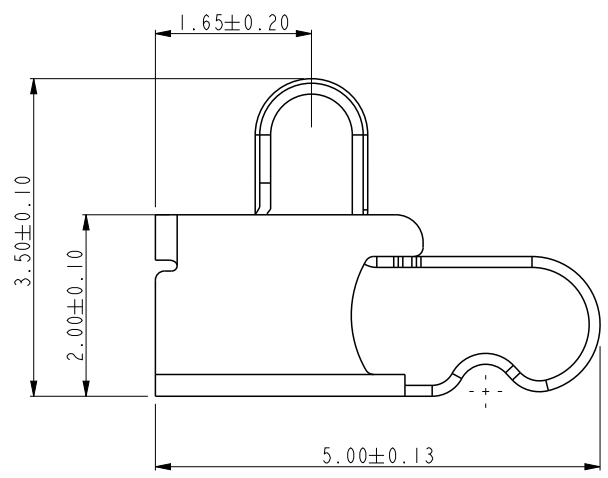
Address: A1208, Overseas Decoration Building, #122 Zhenhua RD., Futian, Shenzhen, China





Copyright FCI.

	PRODUCT NO.
FCI	10118532-001RLF 10118532-003RLF 10118532-009RLF



NOTES:
1.MATERIAL: COPPER ALLOY.
2.CONTACT PLATING:
CONTACT AREA: PLATING Au OR GXT OVER Ni UNDERPLATE.
(GXT = GOLD FLASH + PdNi)
SOLDER AREA: PLATING GOLD FLASH OVER Ni UNDERPLATE.
3.PACKAGING: TAPE & REEL
4.PART NUMBER DESCRIPTION:
10118532-0 0 X X X
LF: LEAD FREE
R : TAPE & REEL
CONTACT PLATING:
1 : 1um Au over Ni
3 : Gold flash over Ni
9 : 1um GXT over Ni

rev	ecn no	dr	date
A	INITIAL RELEASE	AL	2012-08-24

spec ref	*	dr	Andy Lu	2012/08/24	projection	mm	size	A4	scale	12.000
tolerance std	ASME Y14.5	eng	Andy Lu	2012/08/24			ecn no	-		
		chr	-	-			rel level	Released		
		appr	Pei-Ming Zheng	2012/08/24	product family	-				
surface	linear	0.X	±0.3	FCI	title			10118532	rev	
		0.XX	±0.15							
		0.XXX	±0.050							
ASME Y14.5	angular	0°	±2°	www.fci.com	cat. no.	10104321	Product - Customer Drw	sheet 1 of 1		

Print File - REV C - 2009-06-09