



Chipsmall Limited consists of a professional team with an average of over 10 year of expertise in the distribution of electronic components. Based in Hongkong, we have already established firm and mutual-benefit business relationships with customers from,Europe,America and south Asia,supplying obsolete and hard-to-find components to meet their specific needs.

With the principle of “Quality Parts,Customers Priority,Honest Operation,and Considerate Service”,our business mainly focus on the distribution of electronic components. Line cards we deal with include Microchip,ALPS,ROHM,Xilinx,Pulse,ON,Everlight and Freescale. Main products comprise IC,Modules,Potentiometer,IC Socket,Relay,Connector.Our parts cover such applications as commercial,industrial, and automotives areas.

We are looking forward to setting up business relationship with you and hope to provide you with the best service and solution. Let us make a better world for our industry!



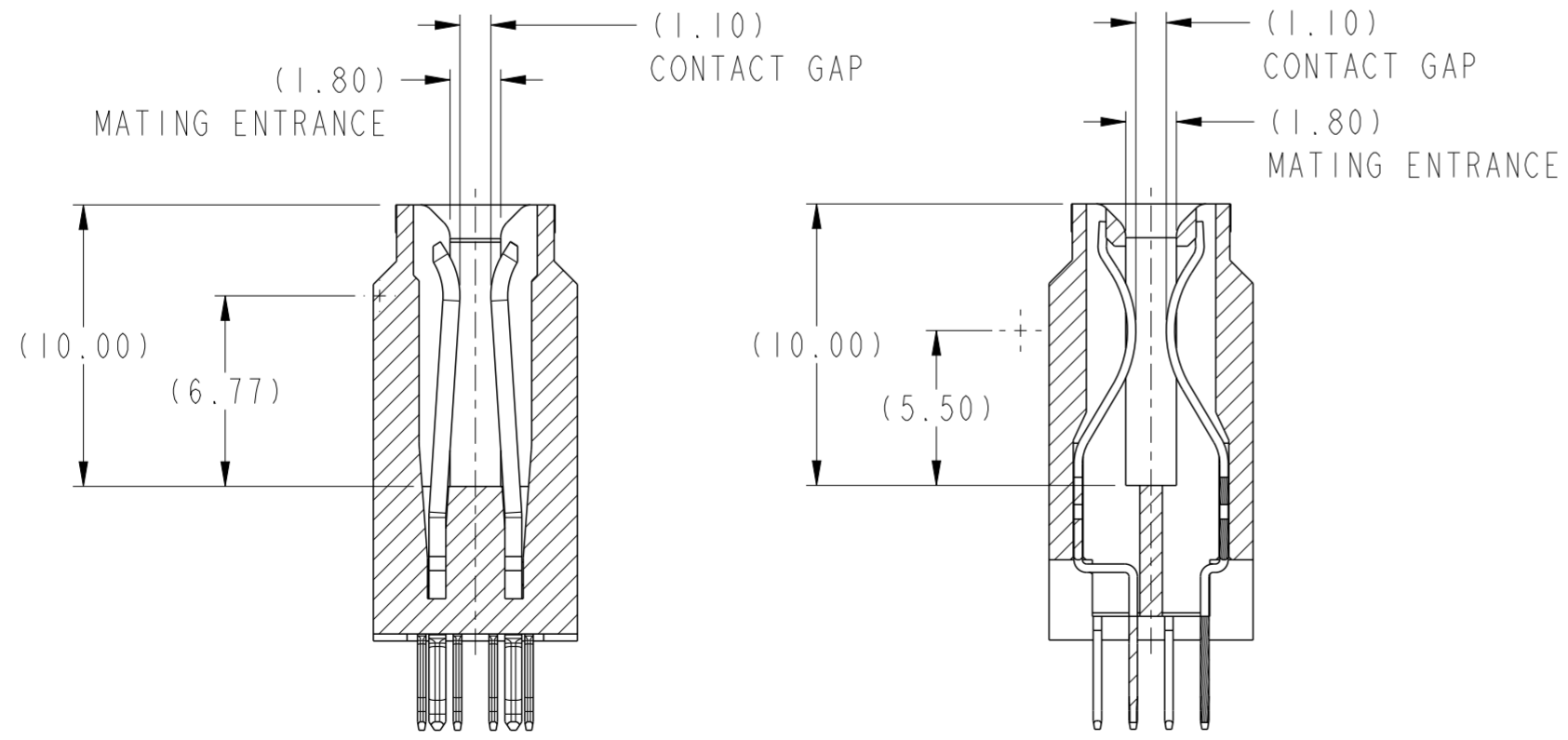
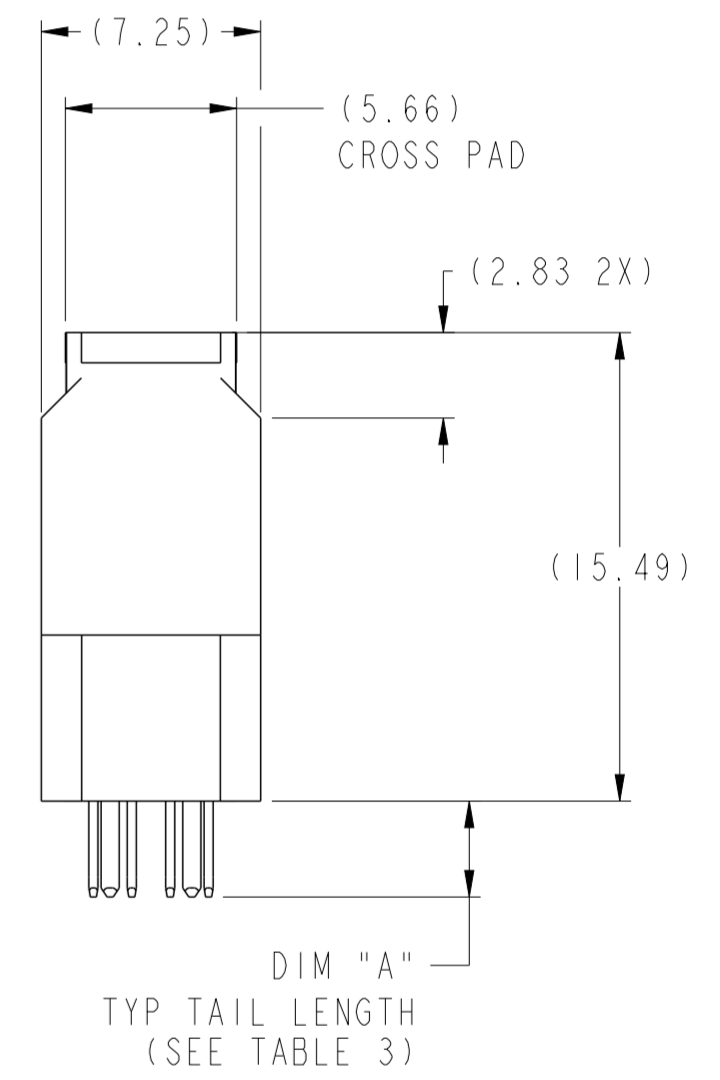
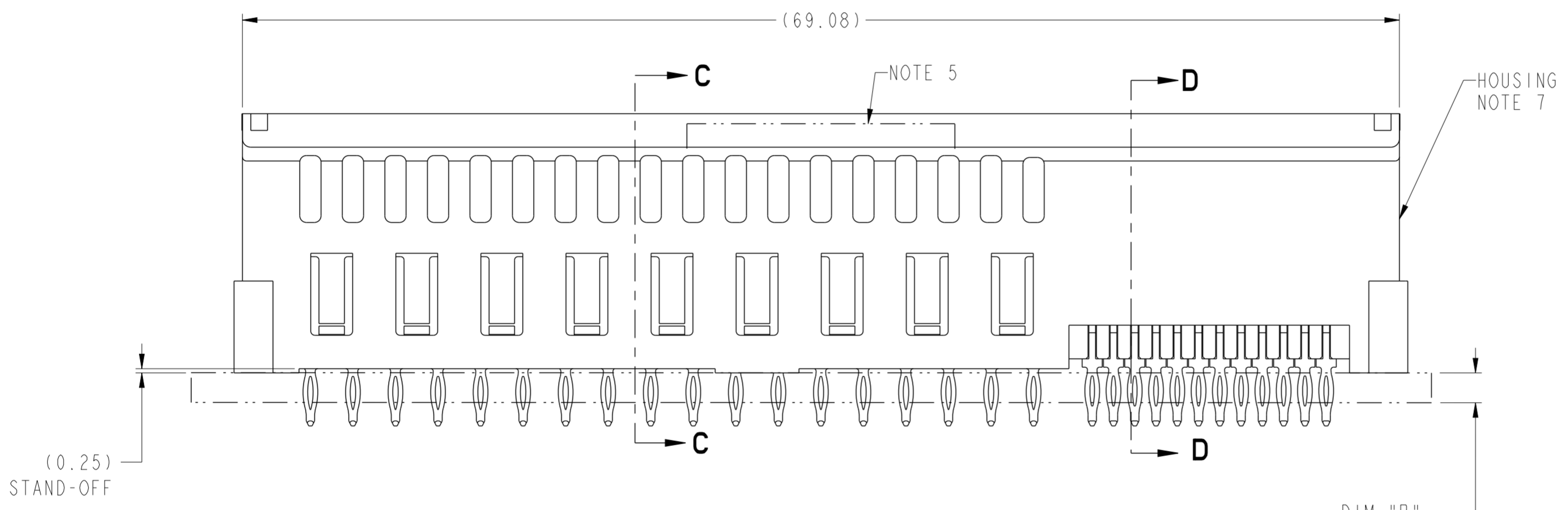
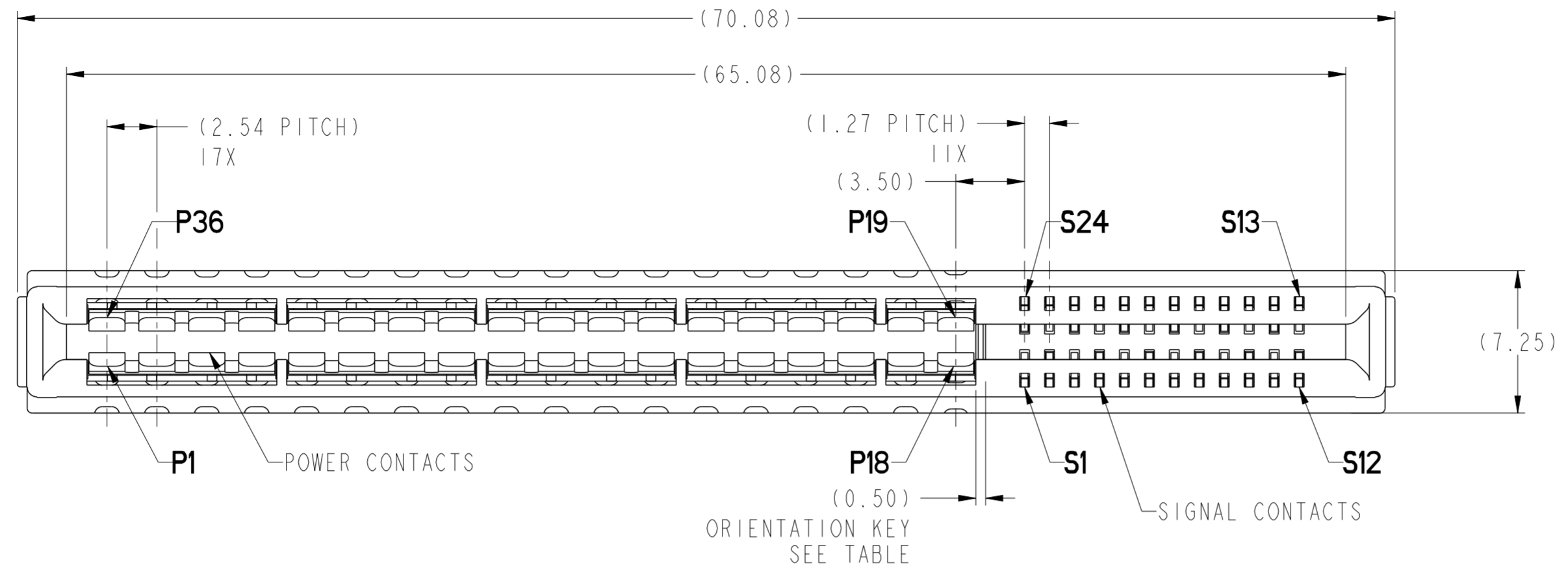
Contact us

Tel: +86-755-8981 8866 Fax: +86-755-8427 6832

Email & Skype: info@chipsmall.com Web: www.chipsmall.com

Address: A1208, Overseas Decoration Building, #122 Zhenhua RD., Futian, Shenzhen, China

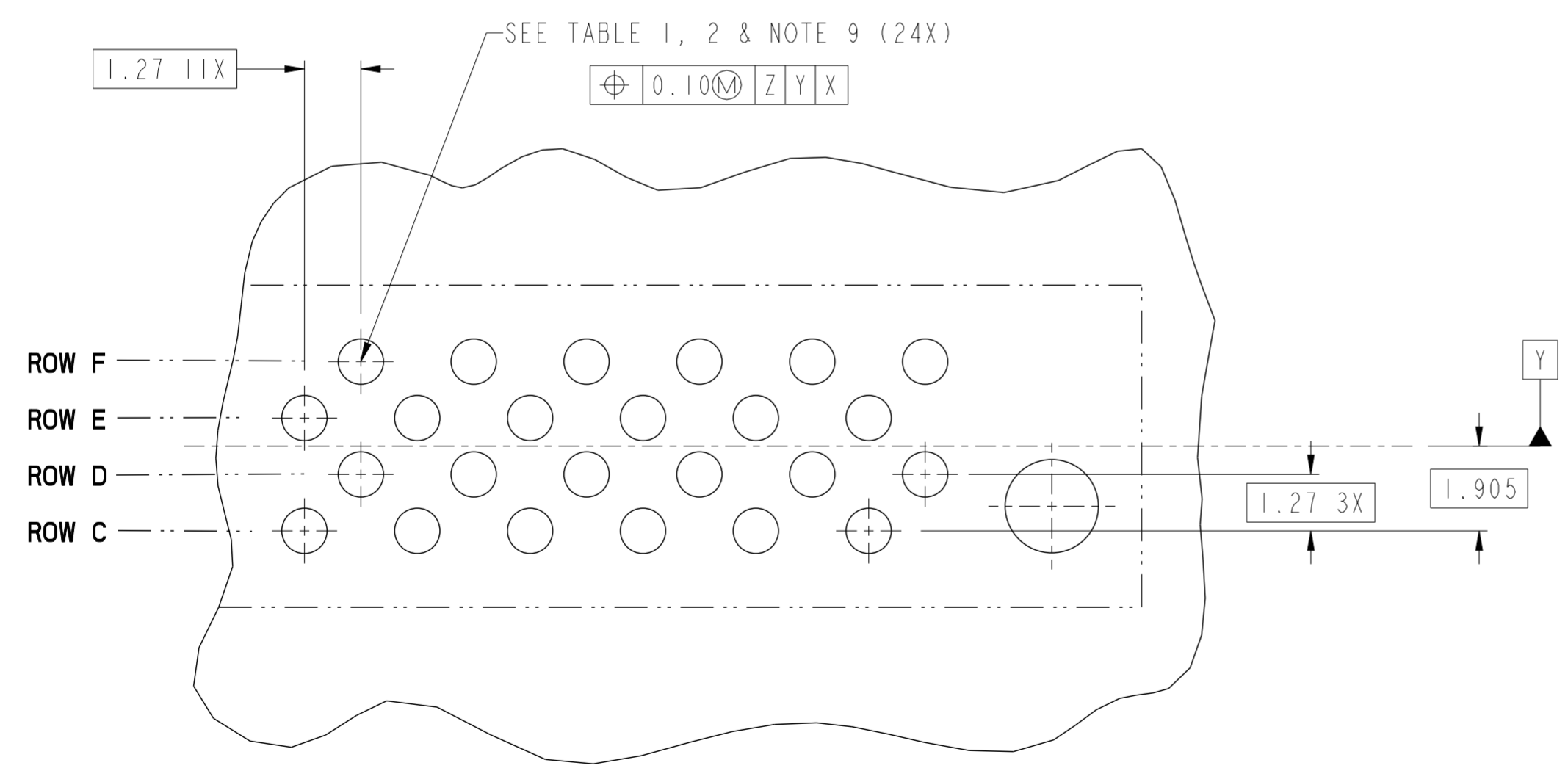
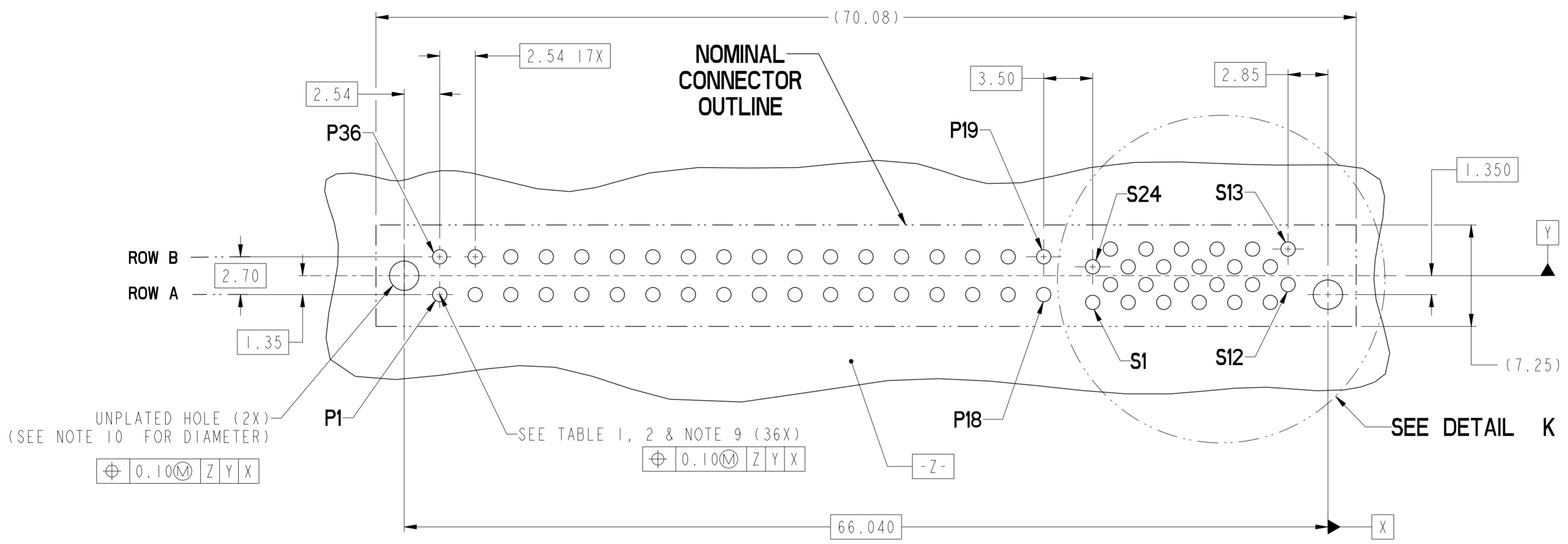




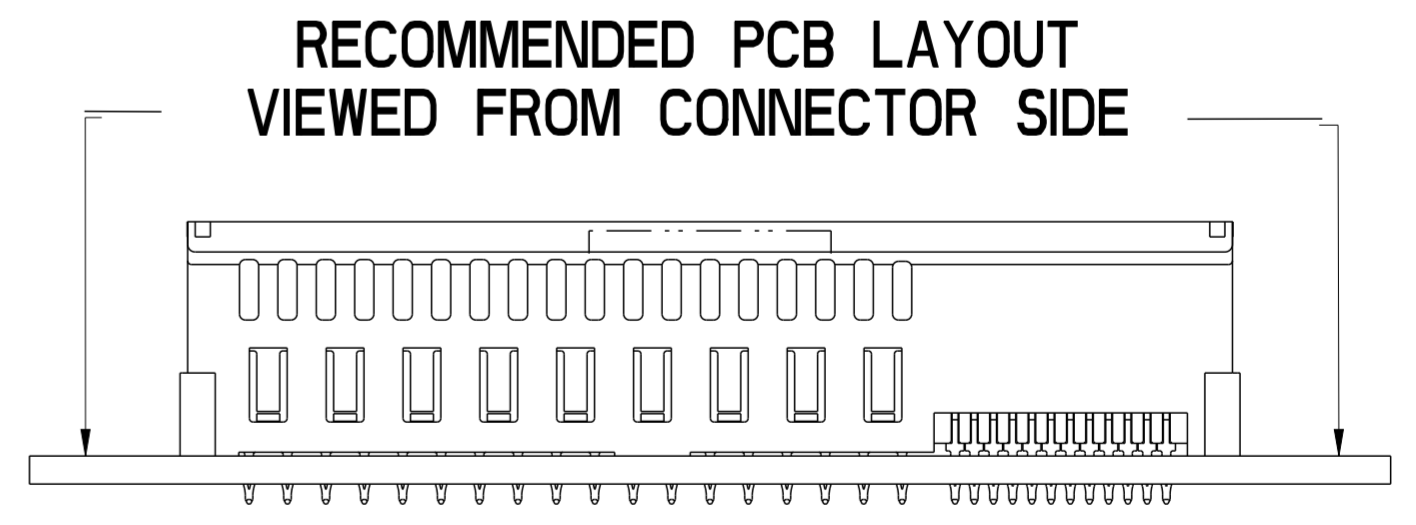
SECTION C-C

SECTION D-D

spec ref	-	dr	Wei-Long Zhang	2011/12/10	projection	MM	size	A2	scale	4:1
tolerance std	ASME Y14.5	eng	Wei-Long Zhang	2012/01/04	chr	-	ecn no	-	rel level	Released
surface	✓	appr	Pai-Ming Zheng	2012/01/05	product family	CARD EDGE	cat. no.	10119695	rev	A
ASME Y14.5	linear	0.X	±0.3	0.XX	±0.1	0.XXX	±0.05	angular	0°	±2°
		www.fci.com		title		VERT RECT (36P 24S) HIGH POWER CARD EDGE		Product - Customer Drw		sheet 1 of 4



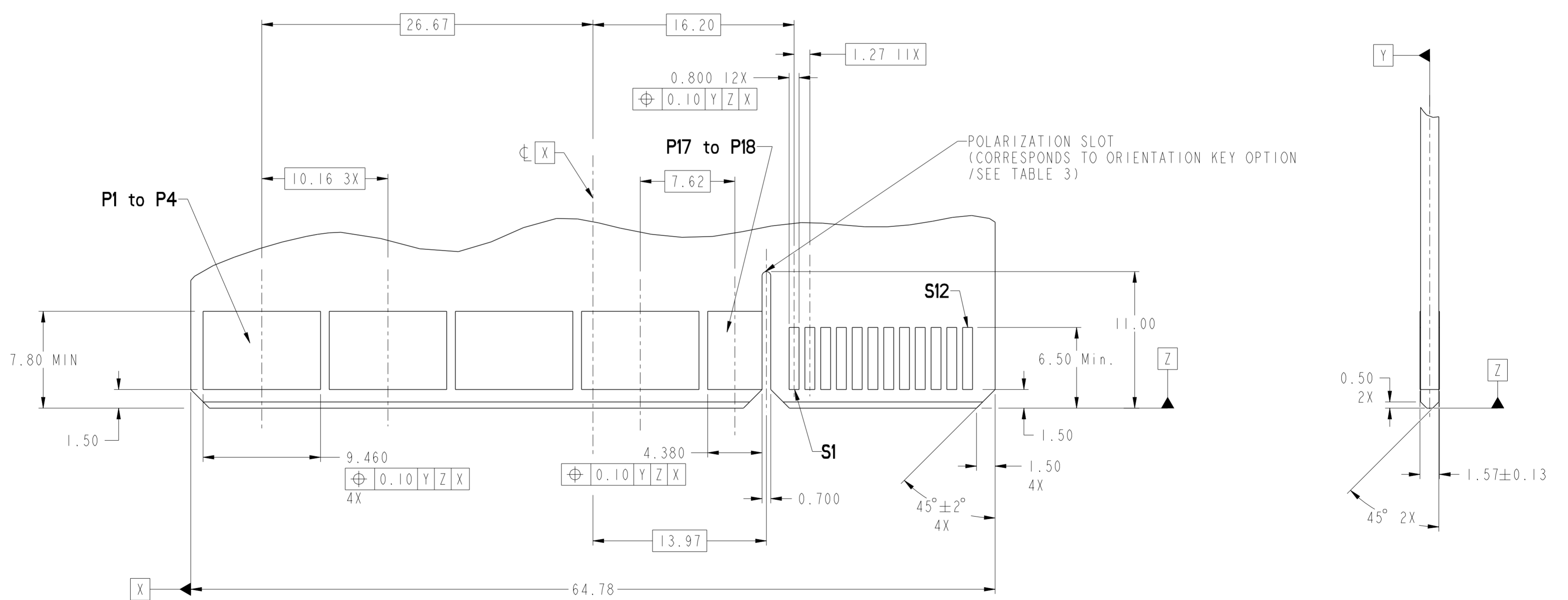
DETAIL K
SCALE 8:1



dr	Wei-Long Zhang	2011/12/10	projection	MM	size	A2	scale	4:1	
eng	Wei-Long Zhang	2012/01/04		MM	ecn no	-	rel level	Released	
chr	-	-							
appr	Pei-Ming Zheng	2012/01/05	product family	CARD EDGE	rel level	Released			
			title	VERT RECT (36P 24S)		dwg no	10119695		
www.fci.com			cat. no.	-		Product - Customer Drw	sheet 2 of 4	rev	A

CONTACT TYPE	TOP LAYER DESCRIPTION	TABLE 1 (HPCE / SOLDER TAILS) PLATED THROUGH-HOLE REQUIREMENTS				
		DRILLED HOLE DIAMETER	COPPER THICKNESS	TIN-LEAD THICKNESS	TIN THICKNESS	FINISHED HOLE DIAMETER
POWER & SIGNAL	TIN-LEAD	1.10-1.16 (1.15 DRILL)	0.025 - 0.050	0.005 - 0.015	--	0.94 - 1.10
	IMMERSION TIN	1.10-1.16 (1.15 DRILL)	0.025 - 0.050	--	0.9 - 1.5um	0.94 - 1.10
	COPPER (SEE NOTE 8)	1.10-1.16 (1.15 DRILL)	0.025 - 0.050	--	--	0.94 - 1.10

CONTACT TYPE	TOP LAYER DESCRIPTION	TABLE 2 (HPCE / PRESS-FIT TAILS) PLATED THROUGH-HOLE REQUIREMENTS				
		DRILLED HOLE DIAMETER	COPPER THICKNESS	TIN-LEAD THICKNESS	TIN THICKNESS	FINISHED HOLE DIAMETER
POWER & SIGNAL	TIN-LEAD	0.81-0.86 (0.85 DRILL)	0.025 - 0.050	0.005 - 0.015	--	0.65 - 0.80
	IMMERSION TIN	0.81-0.86 (0.85 DRILL)	0.025 - 0.050	--	0.9 - 1.5um	0.70 - 0.80
	COPPER (SEE NOTE 8)	0.81-0.86 (0.85 DRILL)	0.025 - 0.050	--	--	0.70 - 0.80

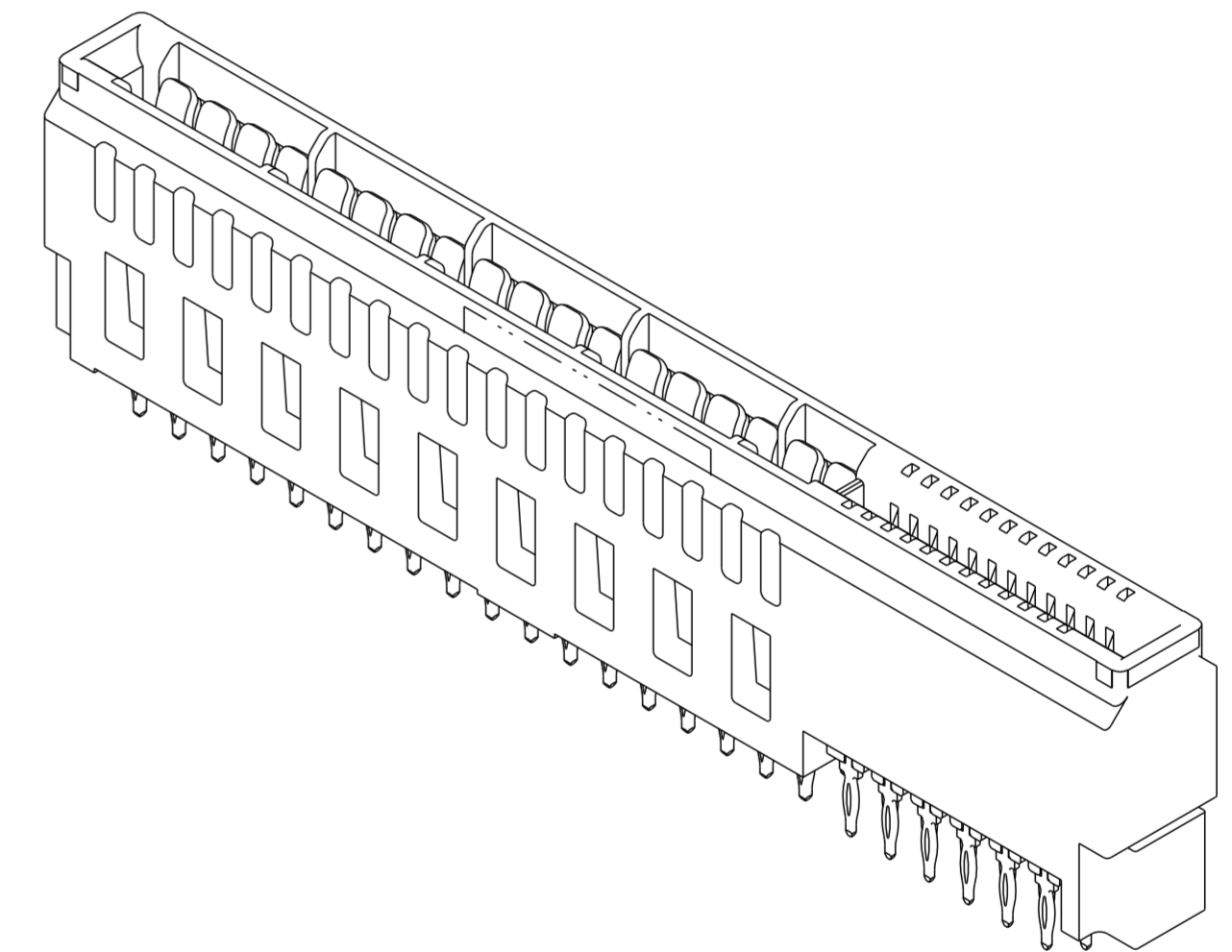


RECOMMENDED MATING BOARD
FOOTPRINT

dr	Wei-Long Zhang	2011/12/10	projection	MM	size	A2	scale	4:1
eng	Wei-Long Zhang	2012/01/04		MM	ecn no	-	rel level	Released
chr	-	-						
appr	Pai-Ming Zheng	2012/01/05	product family	CARD EDGE	rel level	Released		
			VERT RECT (36P 24S) HIGH POWER CARD EDGE			dwg no 10119695	rev A	
www.fci.com			cat. no.			Product - Customer Drw		sheet 3 of 4

HPCE PART NUMBER (TABLE 3)

PART NUMBER	TAIL TYPE	ORIENTATION KEY	DIM "A" TYPICAL TAIL LENGTH	DIM "B" RECOMMENDED BOARD THICKNESS	SPECIFIED APPLICATION TOOL
10119695-001LF	SOLDER	YES	3.17 ±0.25	1.59 - 2.38	NO
10119695-002LF	SOLDER	NO			
10119695-003LF	PRESS-FIT	YES	3.17 ±0.25	1.57 MIN	YES NOTE 11
10119695-004LF	PRESS-FIT	NO			



NOTES:

1. CONNECTOR MATERIALS:

HOUSING: HIGH TEMPERATURE THERMAL PLASTIC, BLACK
UL 94V-0 COMPLIANT
CONTACTS: HIGH PERFORMANCE COPPER ALLOY.

2. CONTACT FINISH REF. GS-12-604 SECTION 5.2.

3. PRODUCT SPECIFICATION: GS-12-604.

4. APPLICATION SPECIFICATION: GS-20-128.

5. PRODUCT MARKING (FCI - PART NUMBER & DATE CODE) ON HOUSING IN AREA SHOWN.

6. PACKAGING MEETS FCI SPECIFICATION GS-14-937.

7. HOUSING COMPONENT WILL WITHSTAND EXPOSURE TO 260°C PEAK TEMPERATURE FOR 60 SECONDS IN A CONVECTION, INFRA-RED, OR VAPOR PHASE REFLOW OVEN.

8. COPPER PLATING THICKNESS IN CENTER OF VIA-HOLE CAN BE NO MORE THAN 0.003 LESS THAN OTHER AREAS.

9. ALL HOLE SIZES ARE FINISHED HOLE SIZES.

10. MOUNTING HOLES ARE UNPLATED
 Ø 2.40 +/- 0.10 FOR PRESS-FIT TAILS
 Ø 2.25 +/- 0.05 FOR SOLDER TAILS

11. APPLICATION TOOL DRAWING: 10119453.

dr	Wei-Long Zhang	2011/12/10	projection	MM	size	A2	scale	4:1
eng	Wei-Long Zhang	2012/01/04			ecn no.	-	rel level	
chr	-	-			product family	CARD EDGE	rel level	Released
appr	Pai-Ming Zheng	2012/01/05			title	VERT RECT (36P 24S) HIGH POWER CARD EDGE		rev
www.fci.com			cat. no.	-	Product - Customer Drw	sheet 4 of 4		