



Chipsmall Limited consists of a professional team with an average of over 10 year of expertise in the distribution of electronic components. Based in Hongkong, we have already established firm and mutual-benefit business relationships with customers from,Europe,America and south Asia,supplying obsolete and hard-to-find components to meet their specific needs.

With the principle of “Quality Parts,Customers Priority,Honest Operation,and Considerate Service”,our business mainly focus on the distribution of electronic components. Line cards we deal with include Microchip,ALPS,ROHM,Xilinx,Pulse,ON,Everlight and Freescale. Main products comprise IC,Modules,Potentiometer,IC Socket,Relay,Connector.Our parts cover such applications as commercial,industrial, and automotives areas.

We are looking forward to setting up business relationship with you and hope to provide you with the best service and solution. Let us make a better world for our industry!



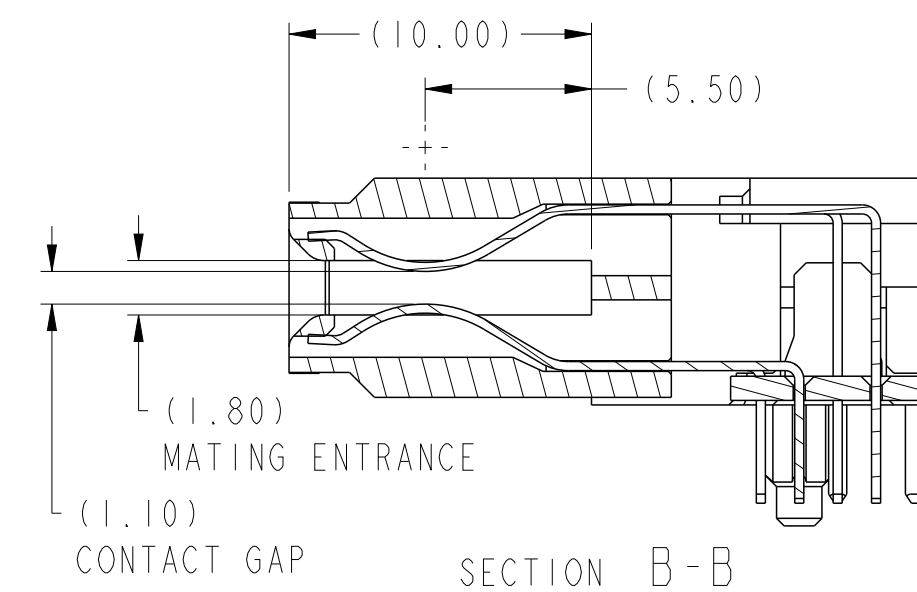
Contact us

Tel: +86-755-8981 8866 Fax: +86-755-8427 6832

Email & Skype: info@chipsmall.com Web: www.chipsmall.com

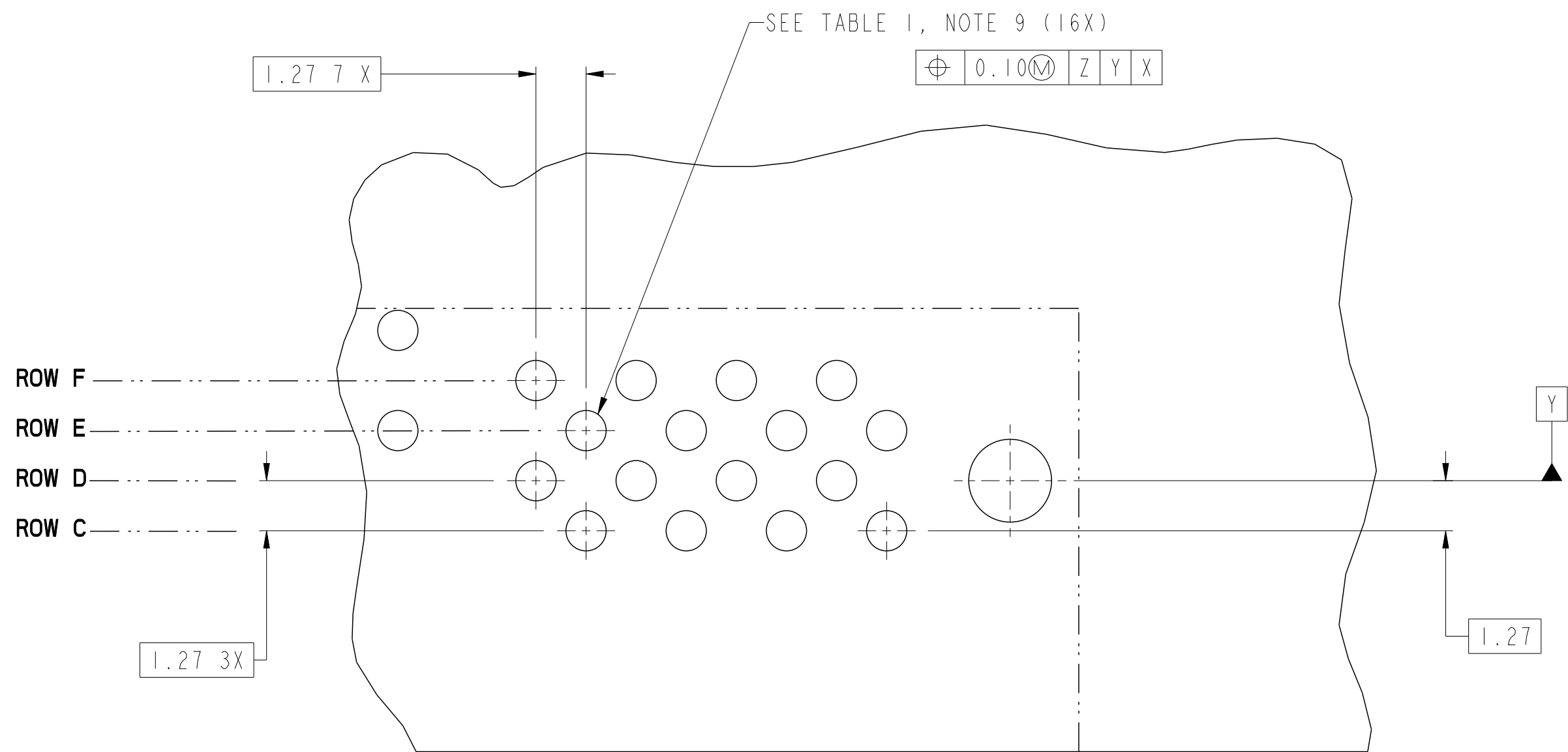
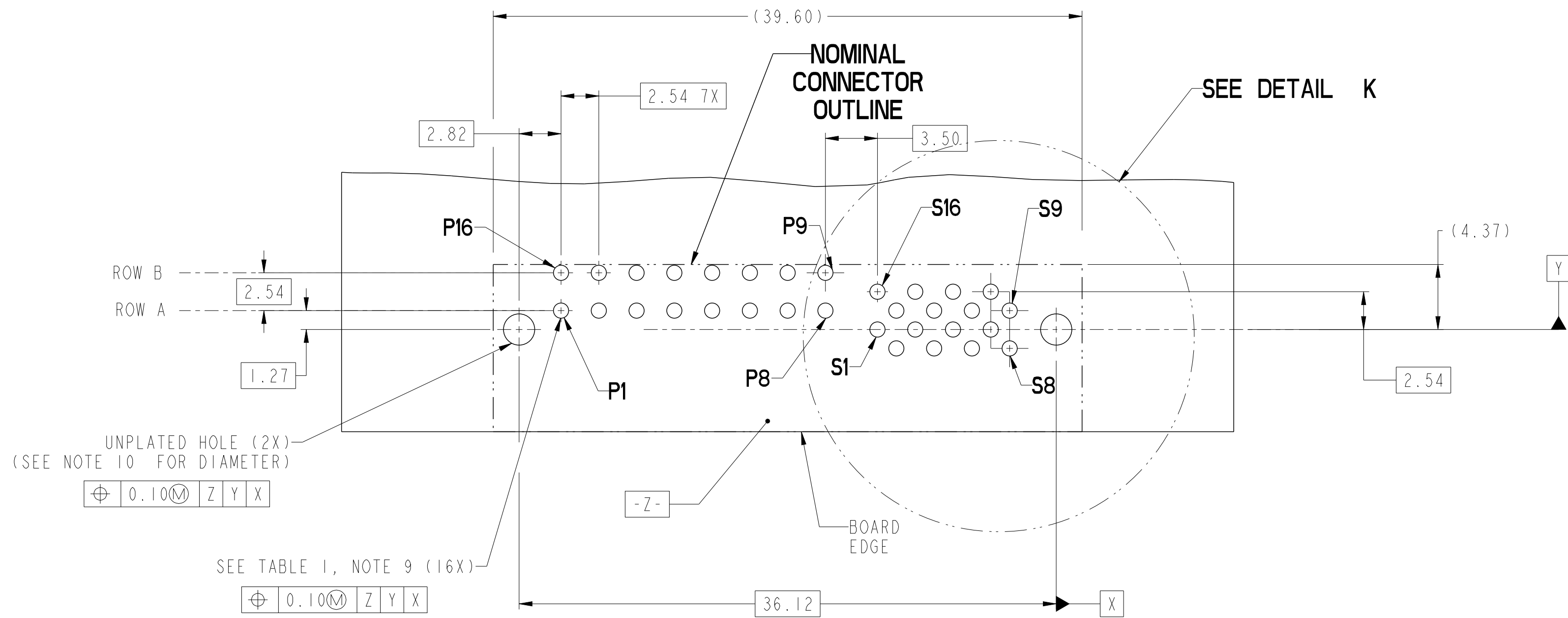
Address: A1208, Overseas Decoration Building, #122 Zhenhua RD., Futian, Shenzhen, China





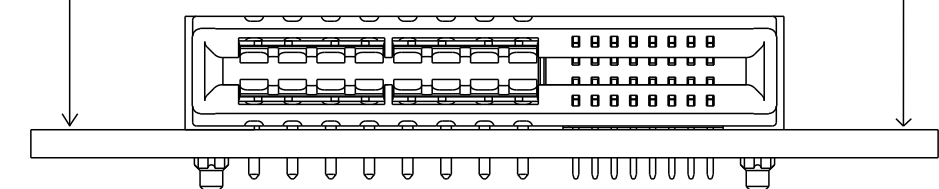
SECTION B-B




rev	ecn no	dr	date	spec ref	-				dr	Wei-Long Zhang	2012/03/12	projection	MM	size	A2	scale	4:1
A	---	HZ	2011-12-22	tolerance std	TOLERANCES UNLESS OTHERWISE SPECIFIED				eng	Wei-Long Zhang	2012/07/16			ecn no	-		
-	-	-	-	-					chr	-	-	product family	-	rel level		Released	
-	-	-	-	-					appr	Pei-Ming Zheng	2012/07/16						
-	-	-	-	surface 	linear	0.X	±0.30		title	RIGHT ANGLE I6PI6S			dwg no	10119843		rev	A
-	-	-	-			0.XX	±0.10			HIGHT POWER CARD EDGE							
-	-	-	-			0.XXX	±0.05										
-	-	-	-	-	angular	0°	±2°	www.fci.com	cat. no.	-	Product - Customer Drw				sheet 1 of 4		



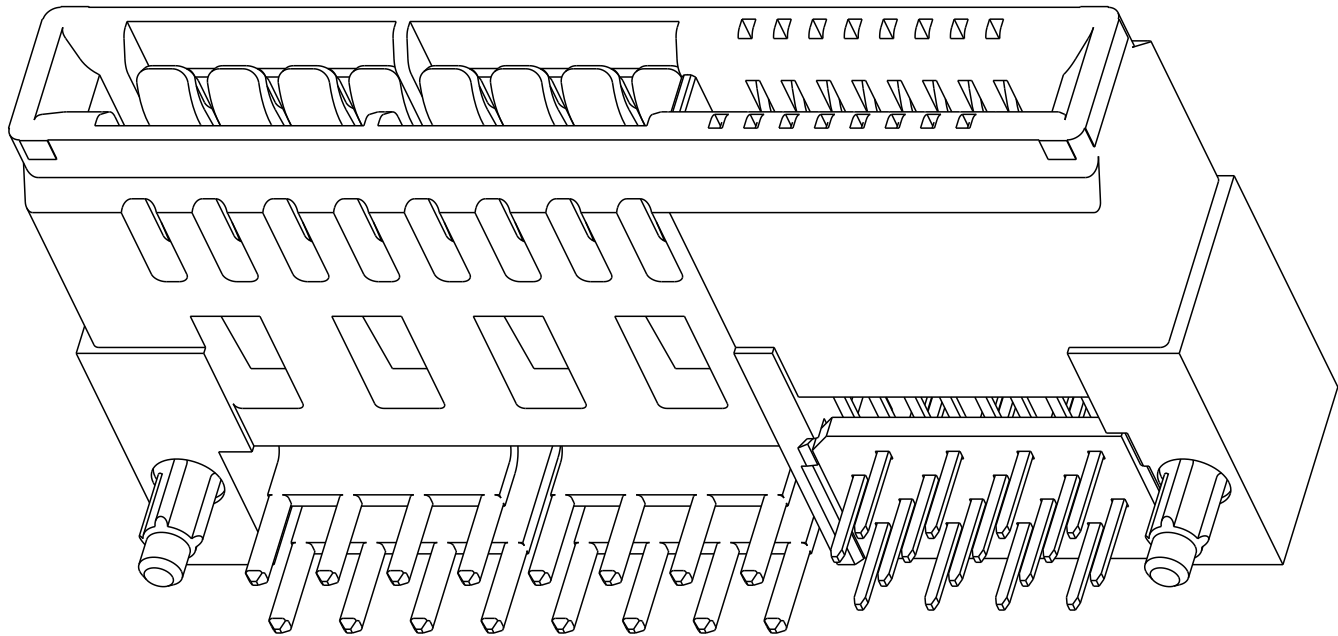
DETAIL K
SCALE 8:1

RECOMMENDED PCB LAYOUT
VIEWED FROM CONNECTOR SIDE



dr	Wei-Long Zhang	2012/03/12	projection		MM	size	A2	scale	4:1
eng	Wei-Long Zhang	2012/07/16				ecn no	-		
chr	-	-	product family	-		rel level			Released
appr	Pei-Ming Zheng	2012/07/16							
		title	RIGHT ANGLE 16PI6S			dwg no	10119843		rev
HIGHT POWER CARD EDGE					A				
www.fci.com		cat. no.	-	Product - Customer Drw			sheet 2 of 4		

HPCE PART NUMBER (TABLE 2)					
10117877	TAIL TYPE	HOLD-DOWN OPTION	ORIENTATION KEY	DIM "A" TYPICAL TAIL LENGTH	
10119843-001LF	SOLDER TAIL	NO	YES	3.25±0.25	
10119843-002LF			NO		
10119843-003LF		YES	YES		
10119843-004LF			NO		
10119843-005LF		NO	YES	4.05±0.25	
10119843-006LF			NO		
10119843-007LF		YES	YES		
10119843-008LF			NO		
10119843-009LF		NO	YES	4.85±0.25	
10119843-010LF			NO		
10119843-011LF		YES	YES		
10119843-012LF			NO		






NOTES:

1. CONNECTOR MATERIALS:

HOUSING: HIGH TEMPERATURE THERMAL PLASTIC, BLACK
UL 94V-0 COMPLIANT

CONTACTS: HIGH PERFORMANCE COPPER ALLOY.
2. CONTACT FINISH REF. GS-12-604 SECTION 5.2.
3. PRODUCT SPECIFICATION: GS-12-604.
4. APPLICATION SPECIFICATION: GS-20-128).
5. PRODUCT MARKING (FCI - PART NUMBER & DATE CODE) ON HOUSING IN AREA SHOWN.
6. PACKAGING MEETS FCI SPECIFICATION GS-14-937.
7. HOUSING COMPONENT WILL WITHSTAND EXPOSURE TO 260°C PEAK TEMPERATURE FOR 60 SECONDS IN A CONVECTION, INFRA-RED, OR VAPOR PHASE REFLOW OVEN.
8. COPPER PLATING THICKNESS IN CENTER OF VIA-HOLE CAN BE NO MORE THAN 0.003 LESS THAN OTHER AREAS.
9. ALL HOLE SIZES ARE FINISHED HOLE SIZES.
10. MOUNTING HOLES ARE UNPLATED
Ø 2.25 +/- 0.05 FOR SOLDER TAILS

dr	Wei-Long Zhang	2012/03/12	<div>projection</div> <div></div>	<div>MM</div> <div></div>	size	A2	scale	4:1
eng	Wei-Long Zhang	2012/07/16			ecn no	-		
chr	-	-			rel level			Released
appr	Pei-Ming Zheng	2012/07/16			product family			-
		title			dwg no		rev	
RIGHT ANGLE 16P16S		10119843			A			
HIGHT POWER CARD EDGE								
www.fci.com	cat. no.	-	Product - Customer Drw			sheet 4 of 4		