



Chipsmall Limited consists of a professional team with an average of over 10 year of expertise in the distribution of electronic components. Based in Hongkong, we have already established firm and mutual-benefit business relationships with customers from,Europe,America and south Asia,supplying obsolete and hard-to-find components to meet their specific needs.

With the principle of “Quality Parts,Customers Priority,Honest Operation,and Considerate Service”,our business mainly focus on the distribution of electronic components. Line cards we deal with include Microchip,ALPS,ROHM,Xilinx,Pulse,ON,Everlight and Freescale. Main products comprise IC,Modules,Potentiometer,IC Socket,Relay,Connector.Our parts cover such applications as commercial,industrial, and automotives areas.

We are looking forward to setting up business relationship with you and hope to provide you with the best service and solution. Let us make a better world for our industry!



Contact us

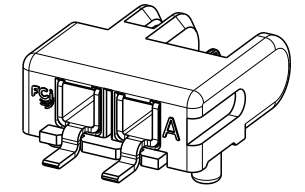
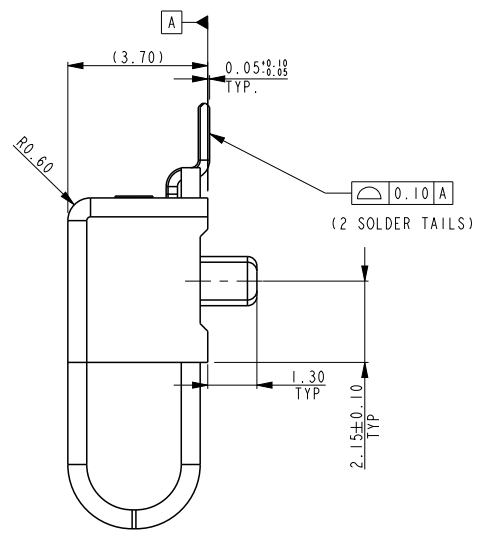
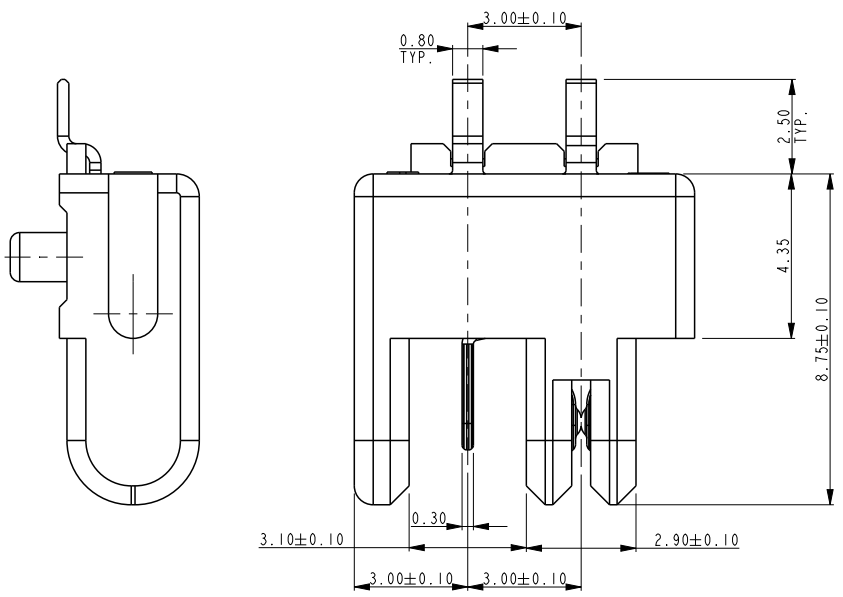
Tel: +86-755-8981 8866 Fax: +86-755-8427 6832

Email & Skype: info@chipsmall.com Web: www.chipsmall.com

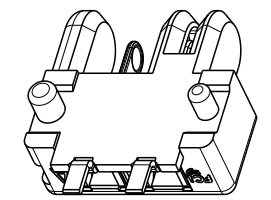
Address: A1208, Overseas Decoration Building, #122 Zhenhua RD., Futian, Shenzhen, China



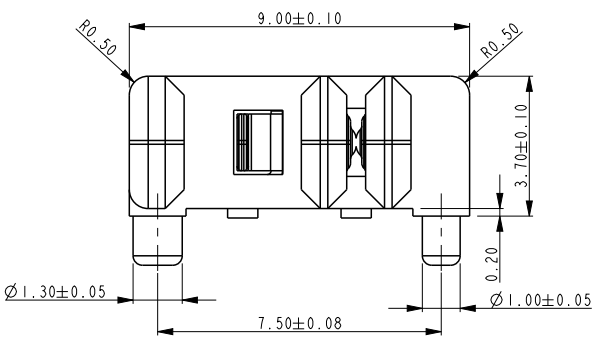
PART NUMBER
10120045-201LF



SCALE 3.000



SCALE 3.000



SCALE 5.000

NOTES:
 1. MATERIAL
 HOUSING: HIGH TEMPERATURE THERMOPLASTIC POLYESTER
 UL 94 V-0, NATURAL
 CONTACTS: COPPER ALLOY
 PLATING SPEC AS BELOW:
 FOR CONTACT AREA:
 *GXT OVER NICKEL
 FOR SOLDER AREA:
 TIN (MATTE) OVER NICKEL
 2. PRODUCT SPEC. GS-12-1079
 3. LEAD FREE NOTES:
 4a. THE HOUSING WILL WITHSTAND EXPOSURE TO 260° C PEAK
 TEMPERATURE FOR 10 SECONDS IN A CONVECTION, INFRA-RED
 OR VAPOR PHASE REFLOW OVEN.
 4b. THIS PRODUCT MEETS EUROPEAN UNION DIRECTIVES AND
 OTHER COUNTRY REGULATIONS AS DESCRIBED IN GS-22-008.
 *GXT™ is an FCI Electronics patented process of palladium-nickel alloy plated with a gold flash.

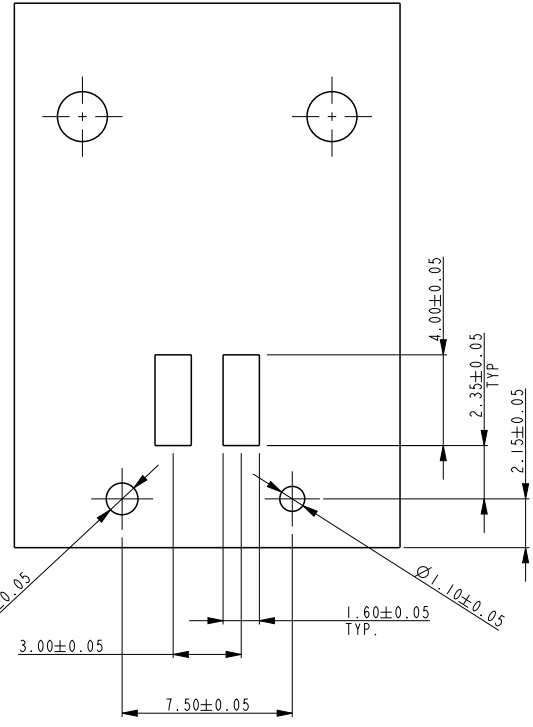


Copyright FCI.

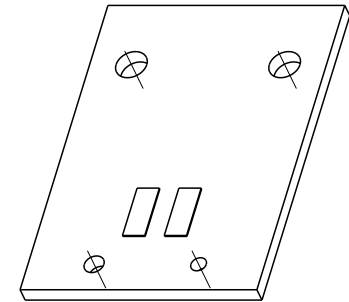
www.fciconnect.com			surface ISO 1302	tolerance std ISO 406 ISO 1101	projection TOLERANCES UNLESS OTHERWISE SPECIFIED	MM
Dr	M JACOB	2014-05-12	ANGULAR	0.x ±x	size A4	Scale 5.000
Eng	M JACOB	2014-05-12	LINEAR	0.xx ±0.2	ECN ELX-1-22313	
Chr	M JACOB	2014-05-12	0° ±2°	0.xxx ±x	Spec ref	
Appr	BIJU K PAUL	2014-05-12	Product family - RoTaConnect			
FCI			title ASSEMBLY, 2 POS HOR TYPE WITH PEG ROTATABLE BOARD TO BOARD CONNECTOR	dwg no 10120045-201C	Rev. B	
			catalog no 10120045-201LF	CUSTOMER DRAWING	sheet 1 of 2	

rev	ecn no	dr	date
A	-	MJA	2014-05-12
B	ELX-1-22313	MJA	2015-10-27
-	-	-	-
-	-	-	-
-	-	-	-
-	-	-	-

PART NUMBER
10120045-201LF



SCALE 3.000



SCALE 2.000



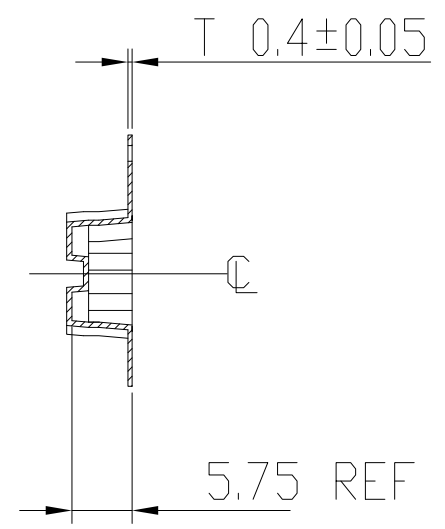
Copyright FCI.

REV F - 2006-04-17

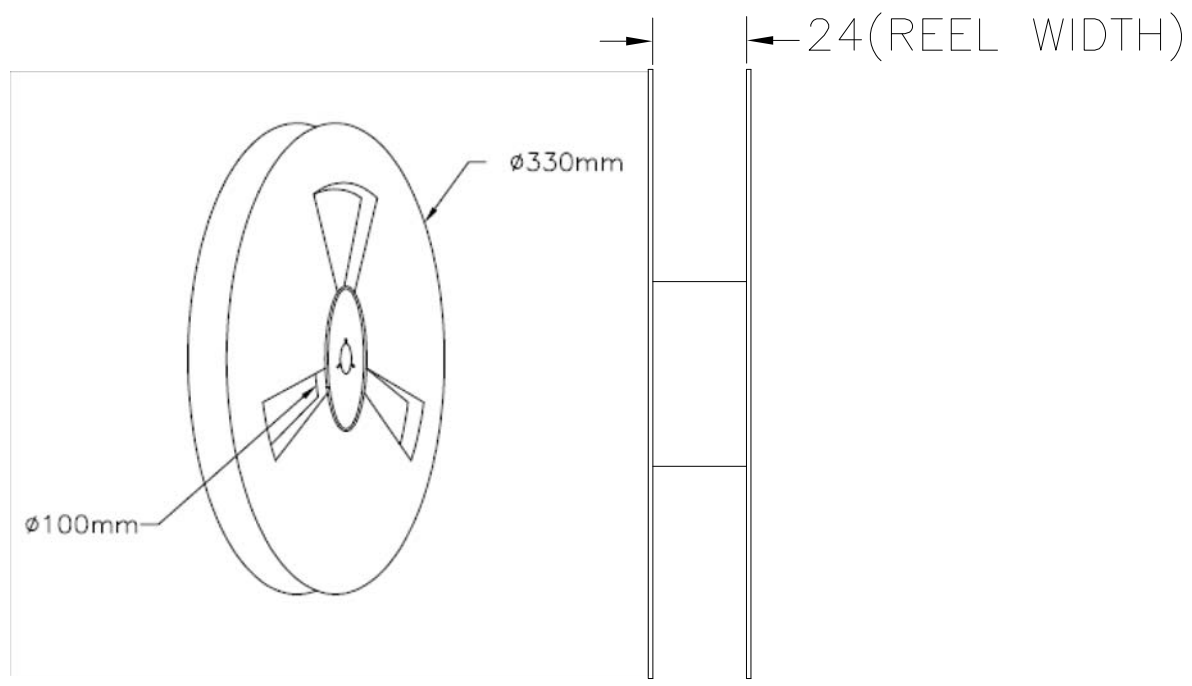
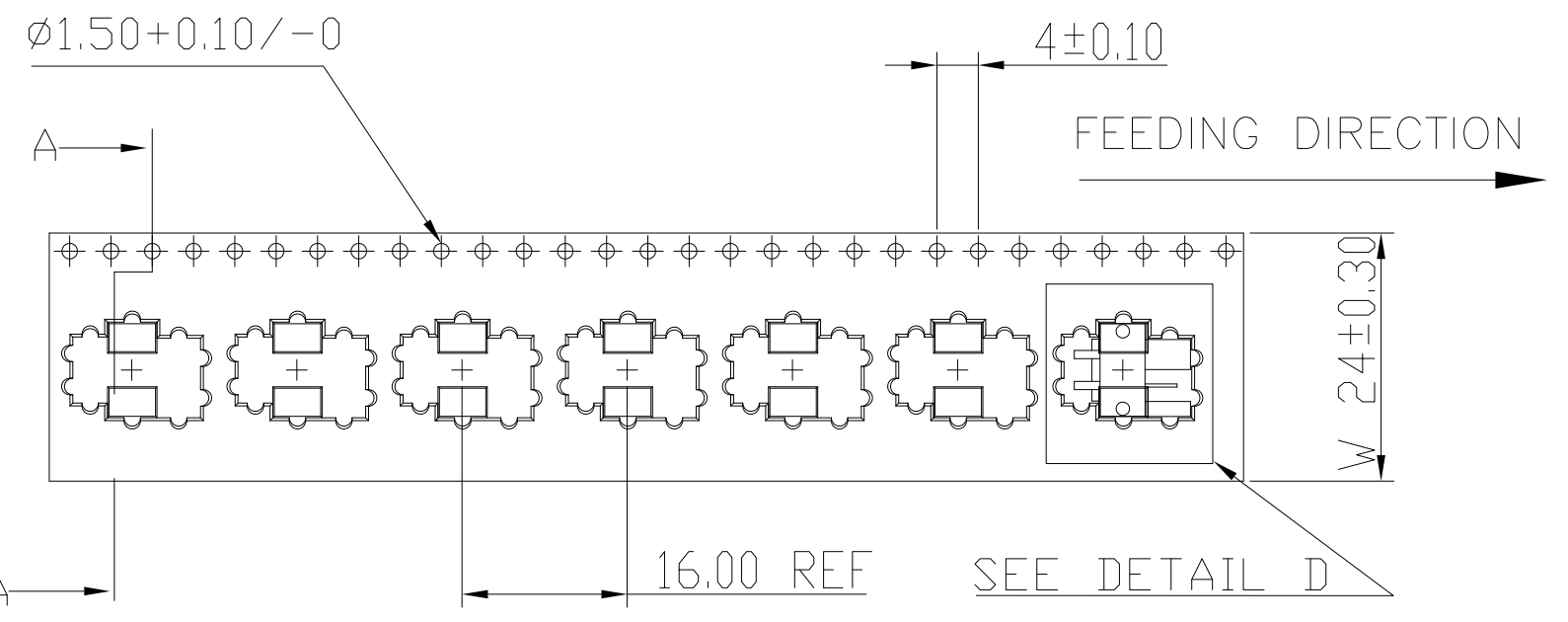
rev	ecn no	dr	date
B	-	-	-
-	-	-	-
-	-	-	-
-	-	-	-
-	-	-	-
-	-	-	-

www.fciconnect.com			surface ISO 1302	<input checked="" type="checkbox"/>	tolerance std ISO 406 ISO 1101	projection 	MM
			TOLERANCES UNLESS OTHERWISE SPECIFIED				
Dr	M JACOB	2014-05-12	ANGULAR	LINEAR	0.x	±x	size A4
Eng	M JACOB	2014-05-12			0.xx	±0.2	Scale 3.000
Chr	M JACOB	2014-05-12	0°	±2°	0.xxx	±x	ECN ELX-1-22313
Appr	BIJU K PAUL	2014-05-12	Product family - RotaConnect			Spec ref -	
			title ASSEMBLY, 2 POS HOR TYPE WITH PEG ROTATABLE BOARD TO BOARD CONNECTOR		dwg no 10120045-201C		Rev. B
			catalog no 10120045-201LF		CUSTOMER DRAWING		sheet 2 of 2

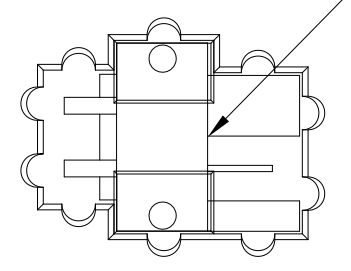
PART NUMBER
10120045-201LF



SECTION A-A



Component inside carrier tape



DETAIL D
SCALE 2:1

NOTES :

1. MATERIAL : ANTI-STATIC POLYSTYRENE
2. PACKAGING AS PER EIA-481 STD.
3. QTY PER REEL : 710 NOS

rev	ecn no	dr	date
B	-	-	-
-	-	-	-
-	-	-	-
-	-	-	-
-	-	-	-

www.fciconnect.com			surface ISO 1302	tolerance std ISO 406 ISO 1101	projection MM
			TOLERANCES UNLESS OTHERWISE SPECIFIED		
Dr	M JACOB	2014-05-12	ANGULAR	0.X ±X	size A4 Scale 1,000
Eng	M JACOB	2014-05-12	LINEAR	0.XX ±0.2	
Chr	M JACOB	2014-05-12	0° ±2°	0.XXX ±X	ECN ELX-I-22313
Appr	BIJU K PAUL	2014-05-12	Product family- RotaConnect		Spec ref -
			title ASSEMBLY, 2 PDS HDR TYPE WITH PEG ROTATABLE BOARD TO BOARD CONNECTOR		dwg no 10120045-201C Rev. B
			catalog no : 10120045-201LF	CUSTOMER DRAWING	sheet 3 of 3

REV F - 2006-04-17