



Chipsmall Limited consists of a professional team with an average of over 10 year of expertise in the distribution of electronic components. Based in Hongkong, we have already established firm and mutual-benefit business relationships with customers from,Europe,America and south Asia,supplying obsolete and hard-to-find components to meet their specific needs.

With the principle of “Quality Parts,Customers Priority,Honest Operation,and Considerate Service”,our business mainly focus on the distribution of electronic components. Line cards we deal with include Microchip,ALPS,ROHM,Xilinx,Pulse,ON,Everlight and Freescale. Main products comprise IC,Modules,Potentiometer,IC Socket,Relay,Connector.Our parts cover such applications as commercial,industrial, and automotives areas.

We are looking forward to setting up business relationship with you and hope to provide you with the best service and solution. Let us make a better world for our industry!



Contact us

Tel: +86-755-8981 8866 Fax: +86-755-8427 6832

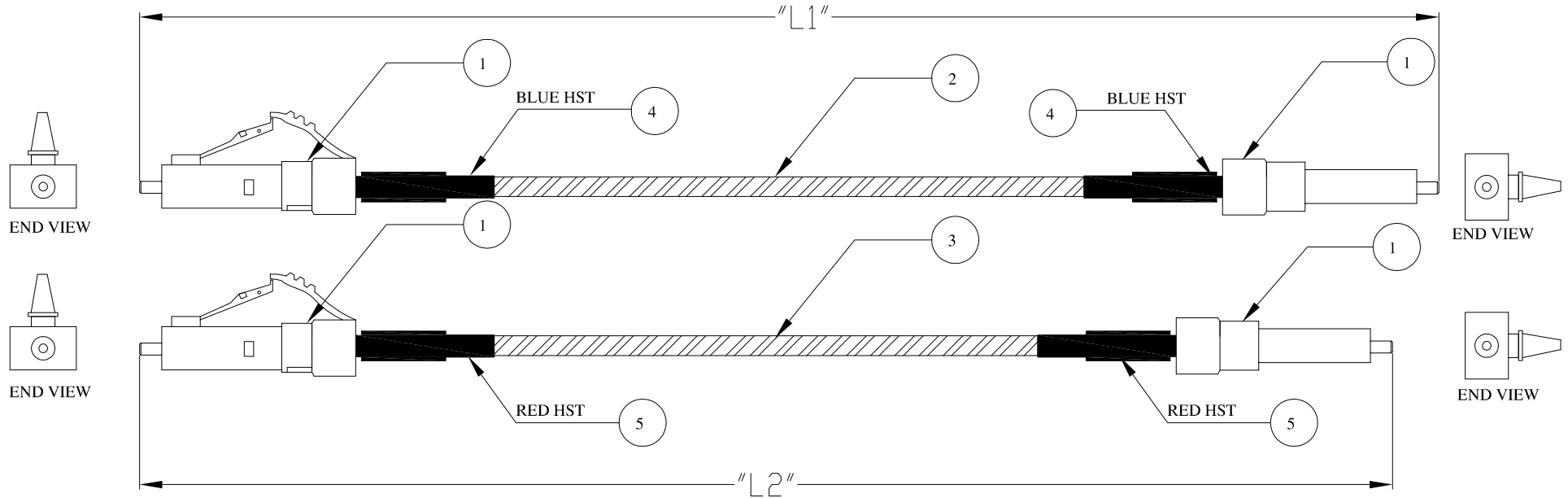
Email & Skype: info@chipsmall.com Web: www.chipsmall.com

Address: A1208, Overseas Decoration Building, #122 Zhenhua RD., Futian, Shenzhen, China



PART NUMBER	LENGTH(L1)	LENGTH(L2)	TOLERANCE(L1&L2)
10123133-001LF	11CM	10.5CM	±0.8CM

COMPONENTS		
ITEM	QTY.	DESCRIPTION
1	4.0EA	LC MM CONNECTOR
2	"L" 1	(OM1) SPX ASSY(BLUE)-ARMORED
3	"L" 2	(OM1) SPX ASSY(RED)-ARMORED
4	2.0	HST(BLUE)
5	2.0	HST(RED)



SPECIFICATIONS	
INSERTION LOSS@850/1300nm	≤ 0.5dB

NOTE:-
1) MAINTAIN LENGTH (L1>L2).

mat'l. code		surface		tolerance		projection		product family	
-		ISO 1302		ISO 406 ISO 1101				Fiber Optics	
ltr		date		tolerances unless otherwise specified		MM		title	
A		04/01/2013		angles		NTS		HARNES(TOP) LC-LC ASSY (OM1)	
				linear				dwg no	
				0°±1'				sheet 1 of 1	
				dr		D.CHARY		10123133	
				enr		JTP		A3	
				chr		BINOY		type	
				appd		BINOY		CUSTOMER Drawing	
sheet index		revision		A					
		sheet		1					