



Chipsmall Limited consists of a professional team with an average of over 10 year of expertise in the distribution of electronic components. Based in Hongkong, we have already established firm and mutual-benefit business relationships with customers from,Europe,America and south Asia,supplying obsolete and hard-to-find components to meet their specific needs.

With the principle of “Quality Parts,Customers Priority,Honest Operation,and Considerate Service”,our business mainly focus on the distribution of electronic components. Line cards we deal with include Microchip,ALPS,ROHM,Xilinx,Pulse,ON,Everlight and Freescale. Main products comprise IC,Modules,Potentiometer,IC Socket,Relay,Connector.Our parts cover such applications as commercial,industrial, and automotives areas.

We are looking forward to setting up business relationship with you and hope to provide you with the best service and solution. Let us make a better world for our industry!



## Contact us

Tel: +86-755-8981 8866 Fax: +86-755-8427 6832

Email & Skype: info@chipsmall.com Web: www.chipsmall.com

Address: A1208, Overseas Decoration Building, #122 Zhenhua RD., Futian, Shenzhen, China



A

B

C

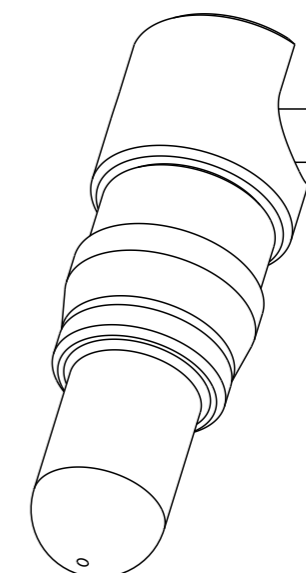
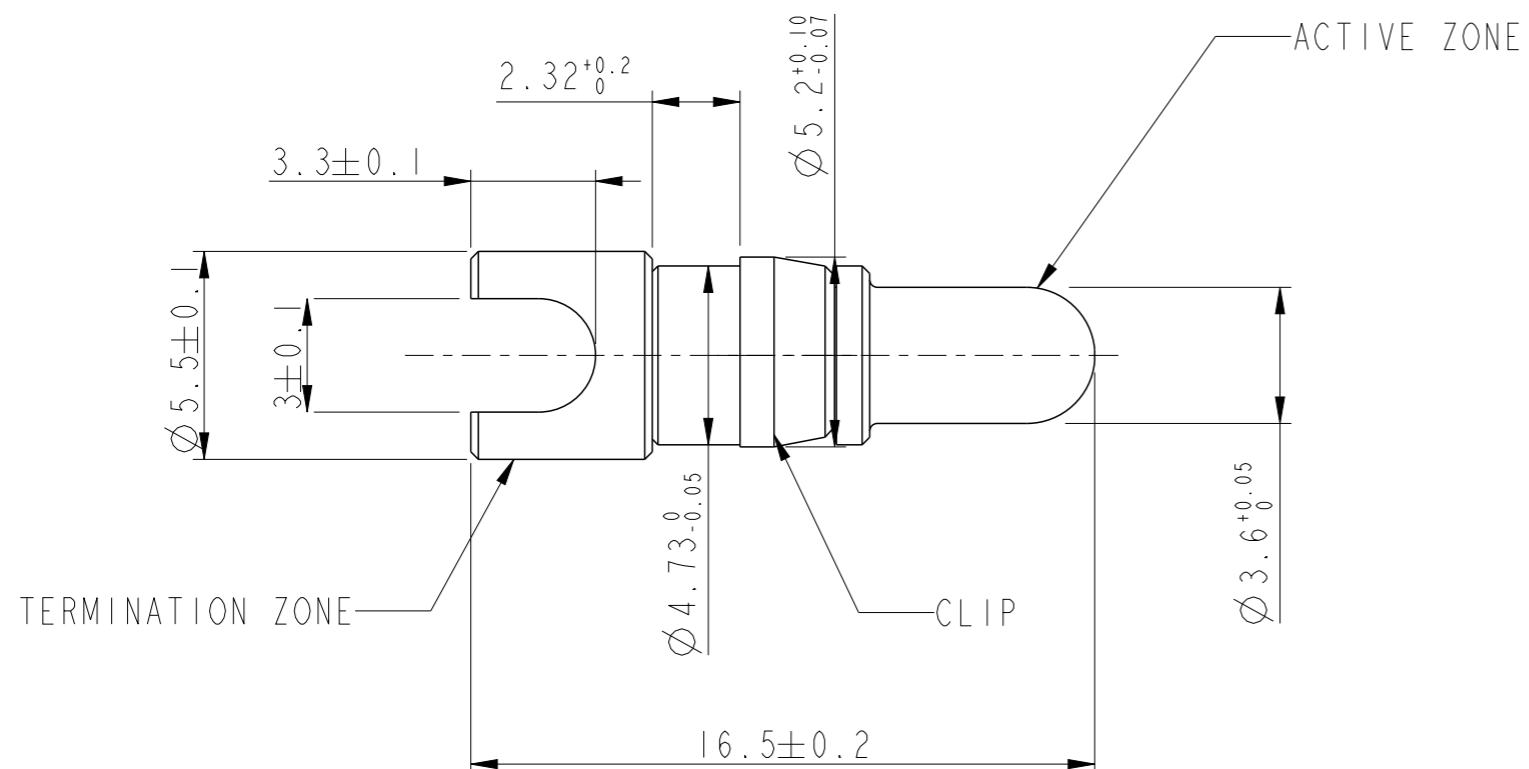
D

A

B

C

D



**MATERIAL AND FINISH**

Active zone

Material: Brass

Plating: Ni + gold

Termination zone (soldering sleeve)

Material: Brass

Plating: Cu over Tin pure matte

Clip

Material: Beryllium Copper

Plating: Nickel

**MECHANICAL CHARACTERISTICS**

Mechanical endurance : 200 matings/unmatings

Contact insertion force on the insulator  
max 60N on a hole of 4.80mm

**ELECTRICAL CHARACTERISTICS**

Current max : 30A

**PACKAGING**

Single Contact in Individual Plastic Cover

Part Number	10123813-101LF
-------------	----------------

**NOTE : ROHS INFORMATION**

The product meet the European union directives and others countries regulations as described on the GS-47-0004

spec ref -		dr Paul Mithun	2015/02/10	projection	MM	size A3	scale 5:1
tolerance std ISO 406 ISO 1101		eng Paul Mithun	2015/02/10			ecn no -	
TOLERANCES UNLESS OTHERWISE SPECIFIED		chr -	-			product family D-Sub	rel level Released
surface - ISO 1302	linear	0.X	±0.3		title SLOTTED POWER CONTACT STRAIGHT 30A	dwg no 10123813	rev A
		0.XX	±0.10				
		0.XXX	±0.005				
	angular	0°	±2°	www.fci.com	cat. no. -	Product - Customer Drw sheet 1 of 1	



Copyright FCI.