



Chipsmall Limited consists of a professional team with an average of over 10 year of expertise in the distribution of electronic components. Based in Hongkong, we have already established firm and mutual-benefit business relationships with customers from,Europe,America and south Asia,supplying obsolete and hard-to-find components to meet their specific needs.

With the principle of "Quality Parts,Customers Priority,Honest Operation,and Considerate Service",our business mainly focus on the distribution of electronic components. Line cards we deal with include Microchip,ALPS,ROHM,Xilinx,Pulse,ON,Everlight and Freescale. Main products comprise IC,Modules,Potentiometer,IC Socket,Relay,Connector.Our parts cover such applications as commercial,industrial, and automotives areas.

We are looking forward to setting up business relationship with you and hope to provide you with the best service and solution. Let us make a better world for our industry!



Contact us

Tel: +86-755-8981 8866 Fax: +86-755-8427 6832

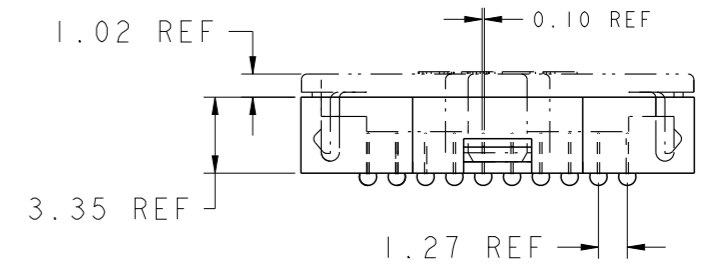
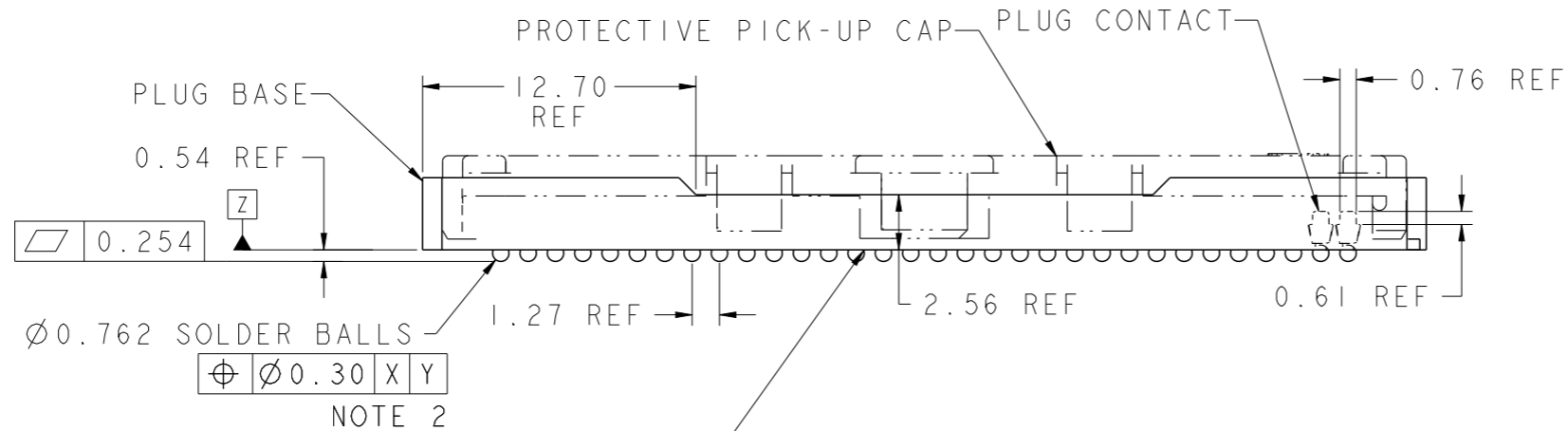
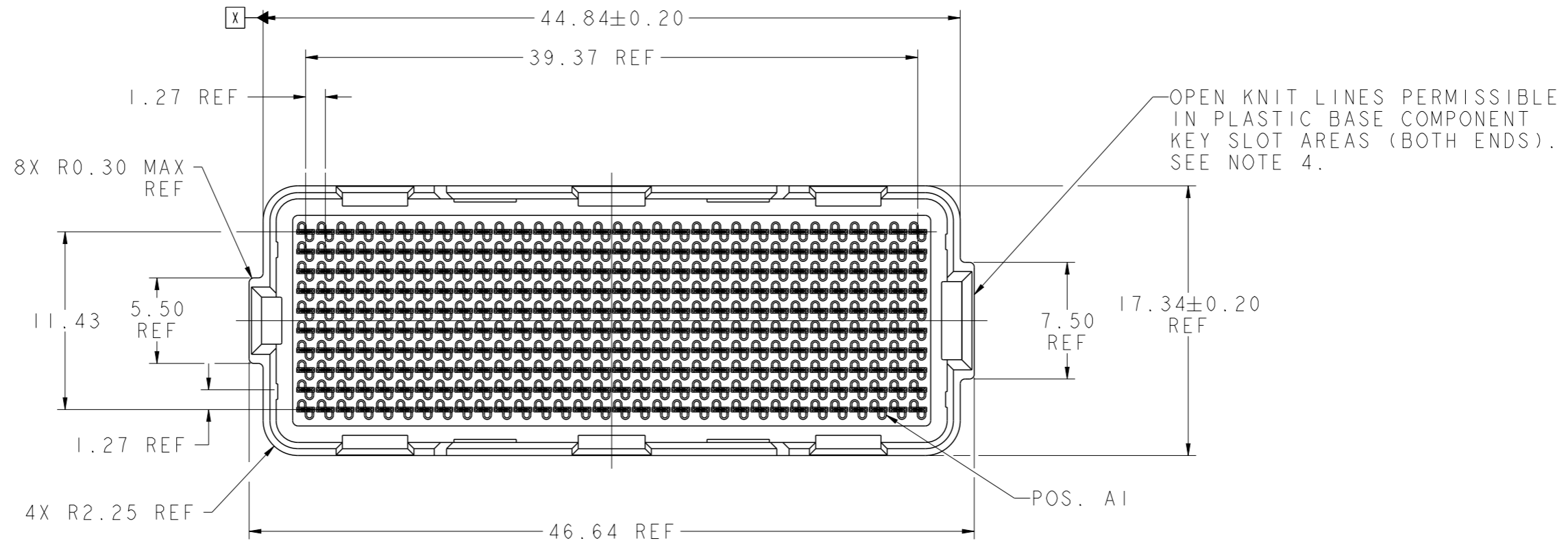
Email & Skype: info@chipsmall.com Web: www.chipsmall.com

Address: A1208, Overseas Decoration Building, #122 Zhenhua RD., Futian, Shenzhen, China



PRODUCT NUMBER

SEE SHEET 5

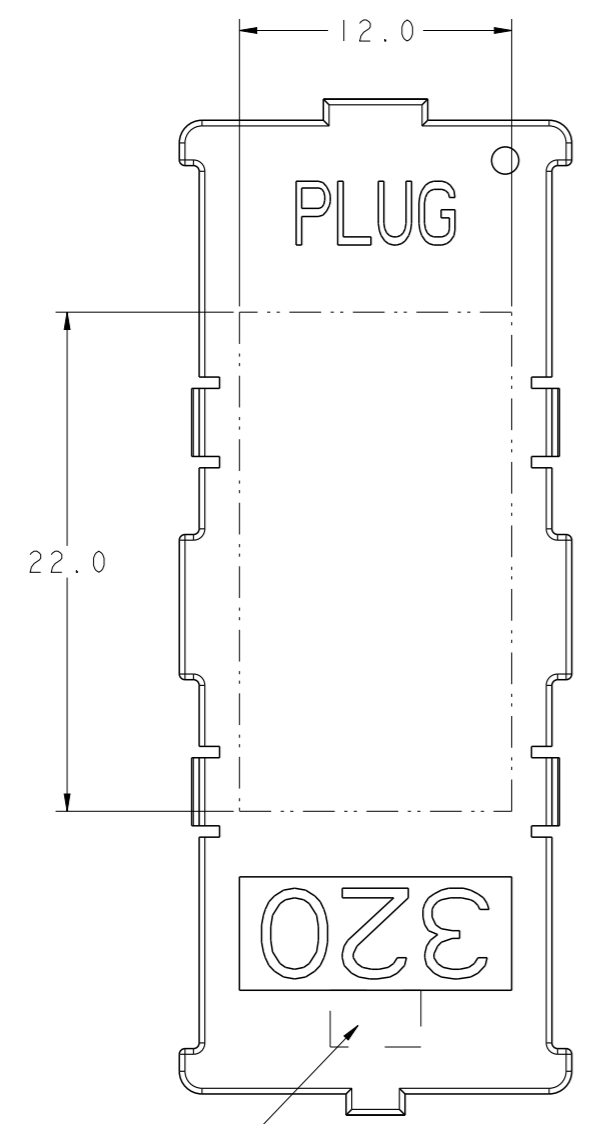


CONTINUOUS OPEN KNIT LINE CRACKS (TRAVERSING THE ENTIRE BODY LENGTH OF THE CONNECTOR) WHICH CAUSE CRITICAL-TO-FUNCTION DIMENSIONAL CHANGES THAT AFFECT THE CONNECTORS MECHANICAL ALIGNMENT FEATURES ARE NOT PERMISSIBLE. SEE NOTE 4.

spec ref	-	dr	Dave Horchler	2013/01/22	projection	mm	size	A3	scale	3:1										
tolerance std	ASME Y14.5	eng	M Srinivasan	2013/07/15			ecn no	ELX-V-15184-1	rel level	Released										
	TOLERANCES UNLESS OTHERWISE SPECIFIED	chr	-	appr							R Marshall	2013/07/15	product family	MEG-ARRAY						
surface	<table border="1"> <tr> <td>linear</td> <td>0.X</td> <td>±0.3</td> </tr> <tr> <td></td> <td>0.XX</td> <td>±0.13</td> </tr> <tr> <td></td> <td>0.XXX</td> <td>±0.051</td> </tr> <tr> <td>angular</td> <td>0°</td> <td>±0°</td> </tr> </table>	linear	0.X	±0.3		0.XX	±0.13		0.XXX	±0.051	angular	0°	±0°			0mm PLUG ASSEMBLY 10 x 32 = 320 POSITIONS		cat. no.	dwg no 10123981	rev B
linear	0.X	±0.3																		
	0.XX	±0.13																		
	0.XXX	±0.051																		
angular	0°	±0°																		
ASME Y14.5		www.fci.com			Product - Customer Drw		sheet 1 of 5													

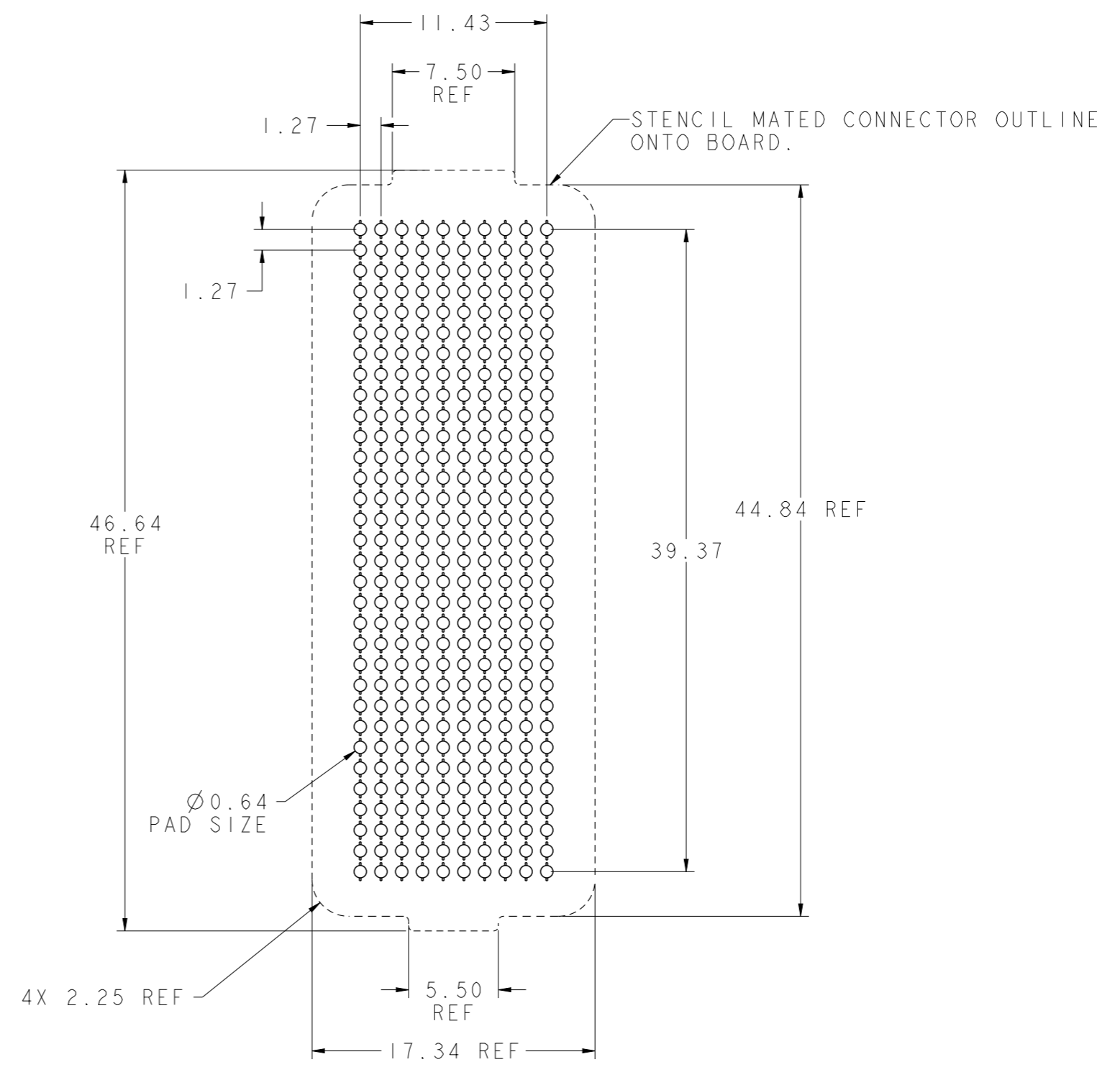
PRODUCT NUMBER

SEE SHEET 5



NOTE 6

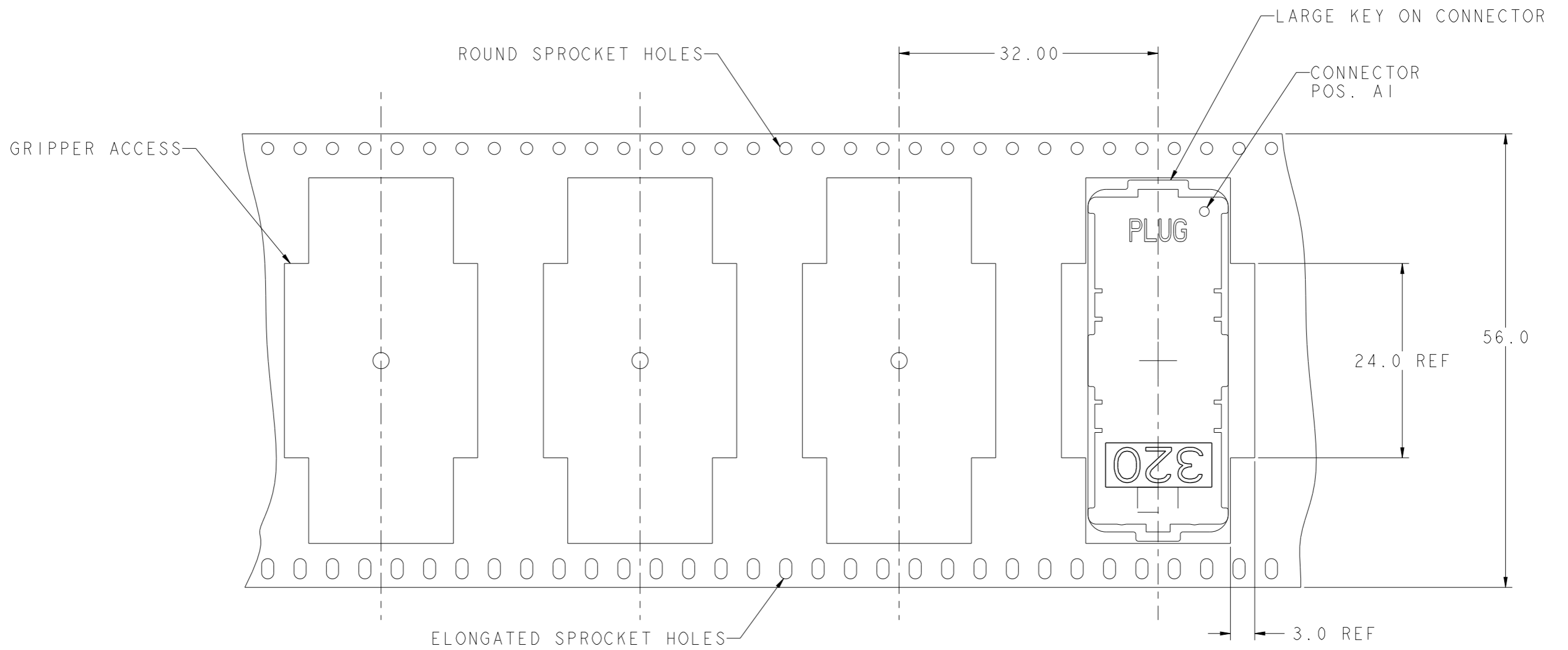
FLAT AREA FOR PICK-UP CAP



BOARD PATTERN

spec ref	-	dr	Dave Horchler	2013/01/22	projection	mm	size	A3	scale	3:1
tolerance std	ASME Y14.5	eng	M Srinivasan	2013/07/15			ecn no	ELX-V-15184-1	rel level	Released
	TOLERANCES UNLESS OTHERWISE SPECIFIED	chr	-	apppr						
surface	✓	linear	0.X	±0.3		0mm PLUG ASSEMBLY 10 x 32 = 320 POSITIONS	dwg no	10123981	rev	B
			0.XX	±0.13						
			0.XXX	±0.051						
	ASME Y14.5	angular	0°	±0°	www.fci.com	cat. no.	Product - Customer Drw	sheet 2 of 5		

PRODUCT NUMBER
SEE SHEET 5



DIE - REEL DIRECTION



TAPE & REEL PACKAGING
PER EIA 481 - 3
SCALE NONE

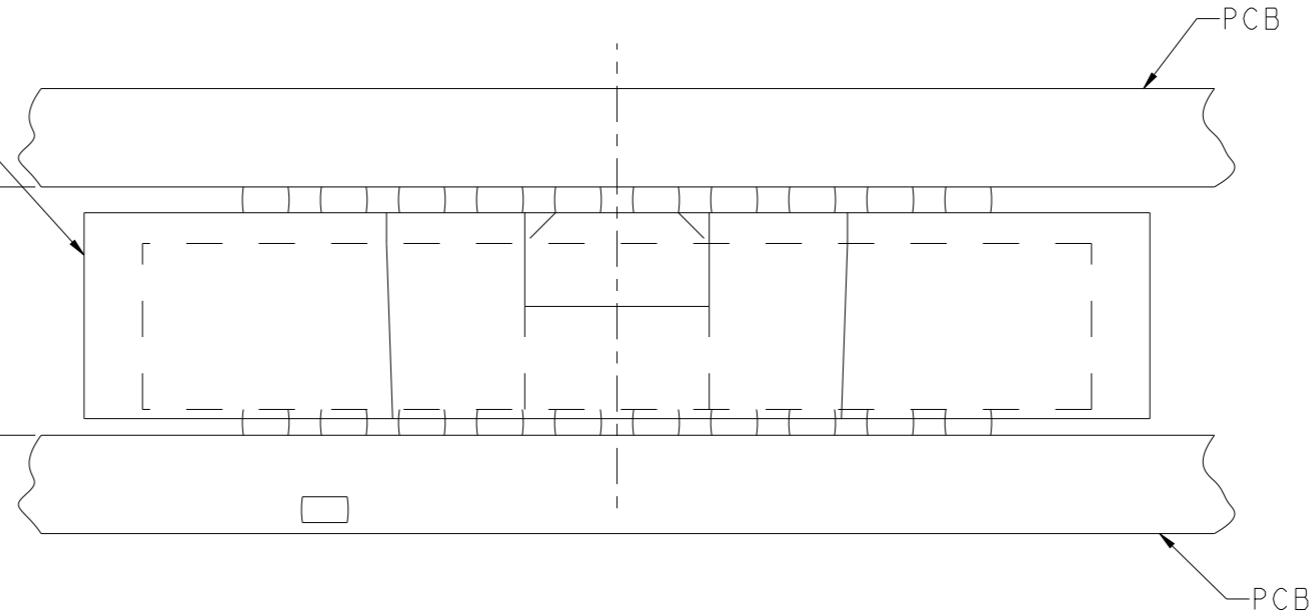
spec ref	-			dr	Dave Horchler	2013/01/22	projection	mm	size	A3	scale	3:1
tolerance std	ASME Y14.5			eng	M Srinivasan	2013/07/15			ecn no			ELX-V-15184-1
TOLERANCES UNLESS OTHERWISE SPECIFIED			chr	-	-	product family			MEG-ARRAY	rel level		
surface		linear	0.X	±0.3		0mm PLUG ASSEMBLY 10 x 32 = 320 POSITIONS	cat. no.	dwg no 10123981	rev			B
ASME Y14.5		angular	0°	±0°					Product - Customer Drw			sheet 3 of 5

PRODUCT NUMBER

SEE SHEET 5

PLUG ASSY
P/N 10123981-XXX

DIM "A" REF
MATED HEIGHT
AFTER REFLOW
SEE NOTE 3



MATED HEIGHT AFTER REFLOW IS BASED ON Ø0.64mm PAD (METAL-DEFINED)
AND 0.13mm SOLDER PASTE STENCIL THICKNESS. SEE NOTE 3

END VIEW - MATED CONNECTORS

SCALE NONE



Copyright FCI.

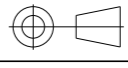


spec ref -		dr	Dave Horchler	2013/01/22	projection	mm	size	A3	scale	3:1	
tolerance std	ASME Y14.5	TOLERANCES UNLESS OTHERWISE SPECIFIED			eng	M Srinivasan	2013/07/15	ecn no ELX-V-15184-1			
surface	✓	linear	0.X	±0.3	chr	-	product family		MEG-ARRAY	rel level	Released
			0.XX	±0.13	appr	R Marshall	2013/07/15	0mm PLUG ASSEMBLY		dwg no	10123981
			0.XXX	±0.051	www.fci.com		10 x 32 = 320 POSITIONS		rev	B	
		angular	0°	±0°	cat. no.		Product - Customer Drw		sheet 4 of 5		

PRODUCT NUMBER	PICK-UP CAP (NATURAL OR BLACK IN COLOR)	CONTACT PLATING AND THICKNESS	SOLDER BALL	NOTES
10123981-002	YES	15u" (.38um) Au	SnPb	
10123981-002LF	YES	15u" (.38um) Au	LEAD FREE	4 AND 5
10123981-092	YES	15u" (.38um) GXT	SnPb	
10123981-092LF	YES	15u" (.38um) GXT	LEAD FREE	4 AND 5
10123981-102	YES	30u" (.76um) Au	SnPb	
10123981-102LF	YES	30u" (.76um) Au	LEAD FREE	4 AND 5
10123981-192	YES	30u" (.76um) GXT	SnPb	
10123981-192LF	YES	30u" (.76um) GXT	LEAD FREE	4 AND 5
10123981-202	YES	50u" (1.27um) Au SPECIAL	SnPb	8
10123981-202LF	YES	50u" (1.27um) Au SPECIAL	LEAD FREE	4, 5 AND 8
10123981-292	YES	50u" (1.27um) GXT SPECIAL	SnPb	8
10123981-292LF	YES	50u" (1.27um) GXT SPECIAL	LEAD FREE	4, 5 AND 8
10123981-A02	YES	30u" (.76um) Au SPECIAL	SnPb	CUSTOMER SPECIAL
10123981-A02LF	YES	30u" (.76um) Au SPECIAL	LEAD FREE	CUSTOMER SPECIAL

NOTES:

- MATERIAL:
HOUSING: LCP-NATURAL
CONTACT: COPPER ALLOY

PLATING:
CONTACT: 15μ" (0.38μm) GXT OVER Ni UNDERPLATE
SOLDER BALL: LEAD FREE
95.5Sn/4Ag/0.5Cu
- SOLDER BALLS WILL NOT HAVE PERFECT SPHERICAL SHAPES DUE TO REFLOW ATTACHMENT.
- MATED HEIGHT EFFECTED BY CUSTOMER'S PCB PAD SIZE, PLATING, SOLDER REFLOW PROFILE, & SOLDER PASTE.
- FOR PROPER APPLICATION FOLLOW FCI APPLICATION SPECIFICATION GS-20-033 LEAD FREE SOLDER BALLS WILL NOT SOLDER PROPERLY IN A LEADED SOLDER PROCESS DUE TO A HIGHER REFLOW TEMPERATURE. LEAD FREE PRODUCT IS THEREFORE NOT BACKWARDS COMPATIBLE WITH LEADED OR SOME SOLDERING APPLICATIONS. REFERENCE FCI APPLICATION SPECIFICATION.
- THIS PRODUCT MEETS EUROPEAN UNION DIRECTIVES AND OTHER COUNTRY REGULATIONS AS DESCRIBED IN GS-47-0004 PRODUCT MEETING THIS DIRECTIVE IS IDENTIFIED IN THE LOT CODE NUMBER MARKED ON EACH PART BY HAVING AN "X" IN THE SEVENTH CHARACTER POSITION.
- CURRENT COMPANY LOGO TO BE VISIBLE IN APPROXIMATE AREA SHOWN.
- SEE PRODUCT SPEC GS-12-100 PER TEST AND PERFORMANCE INFORMATION.
- PLATING FOR INDICATED -2XX SERIES NUMBERS MEET THE REQUIREMENTS OF GR-1217-CORE, CENTRAL OFFICE ENVIROMENT, (25 YEARS LIFE EXPECTANCY). THIS SERIES HAS SPECIAL CONTACT GEOMETRY.

spec ref	-	dr	Dave Horchler	2013/01/22	projection	mm	size	A3	scale	3:1	
tolerance std	ASME Y14.5	eng	M Srinivasan	2013/07/15			ecn no	ELX-V-15184-1			
	TOLERANCES UNLESS OTHERWISE SPECIFIED	chr	-	-			product family	MEG-ARRAY	rel level	Released	
surface	linear	appr	R Marshall	2013/07/15			dwg no	10123981		rev	B
	angular	www.fci.com		cat. no.	0mm PLUG ASSEMBLY		10 x 32 = 320 POSITIONS		Product - Customer Drw		sheet 5 of 5



Copyright FCI.