



Chipsmall Limited consists of a professional team with an average of over 10 year of expertise in the distribution of electronic components. Based in Hongkong, we have already established firm and mutual-benefit business relationships with customers from,Europe,America and south Asia,supplying obsolete and hard-to-find components to meet their specific needs.

With the principle of “Quality Parts,Customers Priority,Honest Operation,and Considerate Service”,our business mainly focus on the distribution of electronic components. Line cards we deal with include Microchip,ALPS,ROHM,Xilinx,Pulse,ON,Everlight and Freescale. Main products comprise IC,Modules,Potentiometer,IC Socket,Relay,Connector.Our parts cover such applications as commercial,industrial, and automotives areas.

We are looking forward to setting up business relationship with you and hope to provide you with the best service and solution. Let us make a better world for our industry!



Contact us

Tel: +86-755-8981 8866 Fax: +86-755-8427 6832

Email & Skype: info@chipsmall.com Web: www.chipsmall.com

Address: A1208, Overseas Decoration Building, #122 Zhenhua RD., Futian, Shenzhen, China

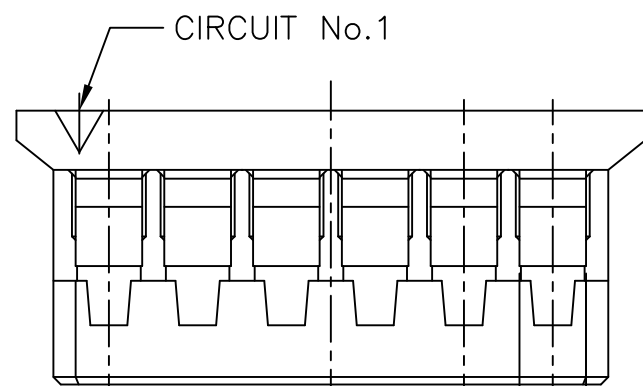
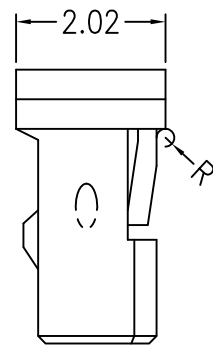
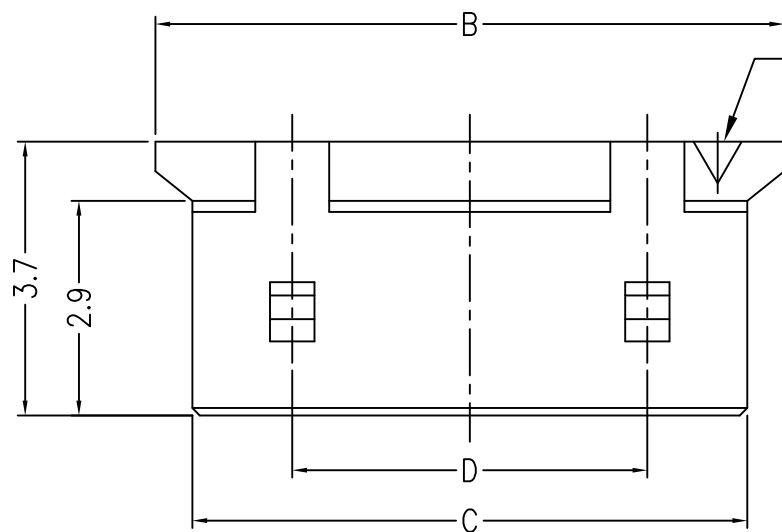
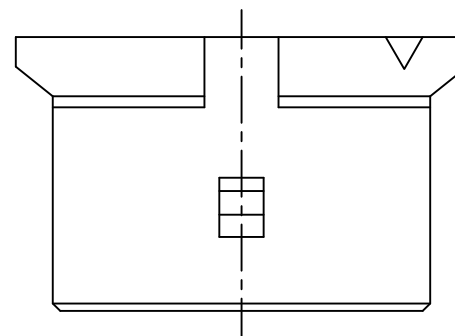
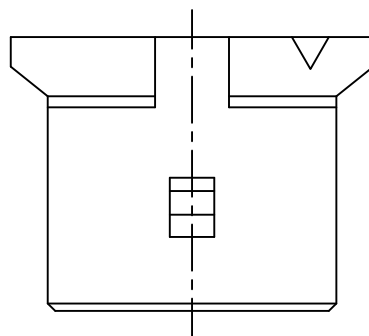
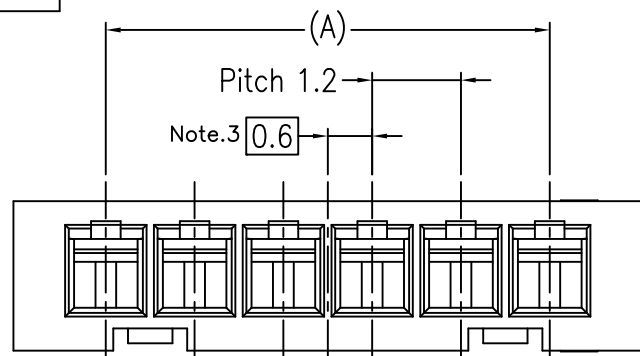


PRODUCT NO.

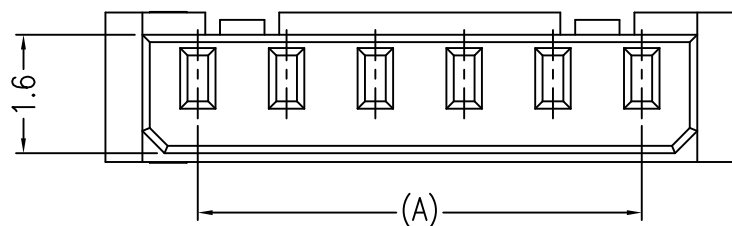
10125836-**-001**

10125836-03-001

10125836-04-001



0.9 TYP(n)



	2,000	1,000	4.8	7.5	8.5	6.0	10125836-06-001SP	6
20,000	5,000						10125836-06-001	
	2,000	2,000	/	5.1	6.1	3.6	10125836-04-001SP	4
40,000	10,000						10125836-04-001	
	2,000	2,000	/	3.9	4.9	2.4	10125836-03-001SP	3
40,000	10,000						10125836-03-001	
INNER BOX (pcs)	INNER BOX (pcs)	POLY BAG (pcs)	D	C	B	A	PRODUCT NO.	CIRCUIT

mat'l. code		surface		tolerance		projection		product family		CODE	
---		ISO 1302		ISO 406		MM		PLUG HOUSING		JP	
ltr		description		ecn no		dr		date		title	
A	RELEASED		Y.K	2013-12-17						FOR 1.2mm PITCH WTB CONNECTOR	
B	REVISED	ELX-J-17235	Y.K	2014-03-19						sheet 1 of 1 size	
C	REVISED	ELX-J-17474	Y.K	2014-04-16						10125836 A3	
D	REVISED	ELX-J-22423	Y.K	2015-11-06	dr	Y.KAMEDA	2015-11-09	FCJ		type Product Customer Drawing	
E	REVISED	ELX-J-22440	Y.K	2015-11-09	enr	Y.KAMEDA	2015-11-09			Rev. E	
					chr	H.SUZUKI	2015-11-09				
					appd	N.SASAME	2015-11-09				
sheet index	revision sheet										

- Note
- Mate with : P/N10125839-****EHLF
 - Applicable terminal : P/N10125837-*****
 - Apply even circuit products. odd circuit products is 0mm.
 - Material : High Temp Thermoplastic, UL94V-0, Black
 - This product meet European Union Directives and other country regulations as described GS-22-008