



Chipsmall Limited consists of a professional team with an average of over 10 year of expertise in the distribution of electronic components. Based in Hongkong, we have already established firm and mutual-benefit business relationships with customers from,Europe,America and south Asia,supplying obsolete and hard-to-find components to meet their specific needs.

With the principle of "Quality Parts,Customers Priority,Honest Operation,and Considerate Service",our business mainly focus on the distribution of electronic components. Line cards we deal with include Microchip,ALPS,ROHM,Xilinx,Pulse,ON,Everlight and Freescale. Main products comprise IC,Modules,Potentiometer,IC Socket,Relay,Connector.Our parts cover such applications as commercial,industrial, and automotives areas.

We are looking forward to setting up business relationship with you and hope to provide you with the best service and solution. Let us make a better world for our industry!



## Contact us

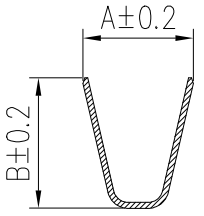
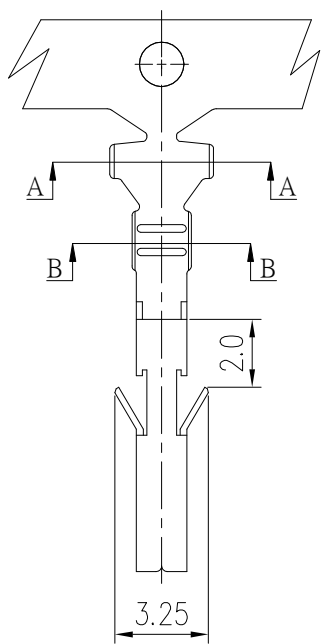
Tel: +86-755-8981 8866 Fax: +86-755-8427 6832

Email & Skype: info@chipsmall.com Web: www.chipsmall.com

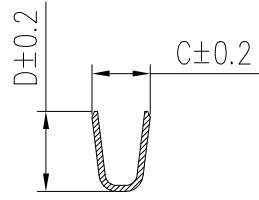
Address: A1208, Overseas Decoration Building, #122 Zhenhua RD., Futian, Shenzhen, China



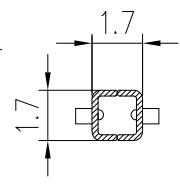
PRODUCT NUMBER  
SEE PART NO. TABLE



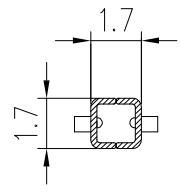
SEC A-A



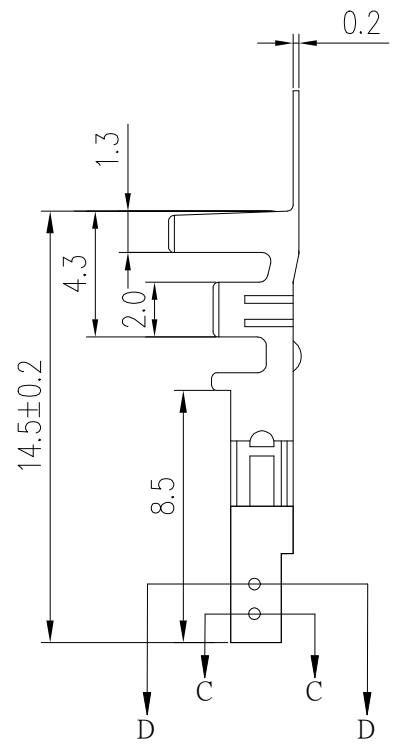
SEC B-B



SEC C-C



SEC D-D



NOTES:

1. MATERIAL: OPTIONAL.
2. THIS TERMINAL IS USED WITH FCI RECEPTACLE HSG 10127815.
3. PRODUCT SPECIFICATION: GS-12-1181.
4. PACKAGE SPECIFICATION: GS-14-2362.
5. PART NUMBER SCHEME:  
10127817- X X X X LF

PLATING TYPE:  
P: PRE-PLATED  
BLANK: POST-PLATED

APPLICABLE AWG:  
1: AWG #16~#22  
2: AWG #24~#28

PLATING CODE:  
1: GOLD FLASH  
2: TIN  
4: 30u" GOLD PLATING

MATERIAL CODE:  
1: PHOSPHORUS BRONZE  
2: BRASS

6. DIMENSIONAL & PART NO. TABLE:

PART NO.	A	B	C	D	APPLICABLE WIRES
10127817-XX2XLF	3.2	3.4	1.8	2.2	#24~#28
10127817-XX1XLF	3.7	4.5	1.8	2.7	#16~#22

mat'l. code		surface ISO 1302 ✓		tolerance ISO 406 ISO 1101		projection		product family	
ltr		ecn no		dr		date		WTB	
A		TAI		2013-11-11		tolerances unless otherwise specified		title	
B		ELX-T-17193		TAI		2014-03-12		RECEPTACLE TERMINAL FOR	
C		ELX-T-18006		TAI		2014-06-19		MINITEK PWR4.2 WIRE CONNECTOR	
D		ELX-N-29382		TONY		2018-02-22		dwg no	
				dr		KENNY TAI		sheet 1 of 1	
				engr		KENNY TAI		size	
				chr		KENNY TAI		10127817	
				appd		PM ZHENG		A3	
								type	
								Product Customer Drawing	
sheet index		revision sheet		D		1			

© 2016 AFCl  
 Amphenol FCI