



Chipsmall Limited consists of a professional team with an average of over 10 year of expertise in the distribution of electronic components. Based in Hongkong, we have already established firm and mutual-benefit business relationships with customers from,Europe,America and south Asia,supplying obsolete and hard-to-find components to meet their specific needs.

With the principle of "Quality Parts,Customers Priority,Honest Operation,and Considerate Service",our business mainly focus on the distribution of electronic components. Line cards we deal with include Microchip,ALPS,ROHM,Xilinx,Pulse,ON,Everlight and Freescale. Main products comprise IC,Modules,Potentiometer,IC Socket,Relay,Connector.Our parts cover such applications as commercial,industrial, and automotives areas.

We are looking forward to setting up business relationship with you and hope to provide you with the best service and solution. Let us make a better world for our industry!



## Contact us

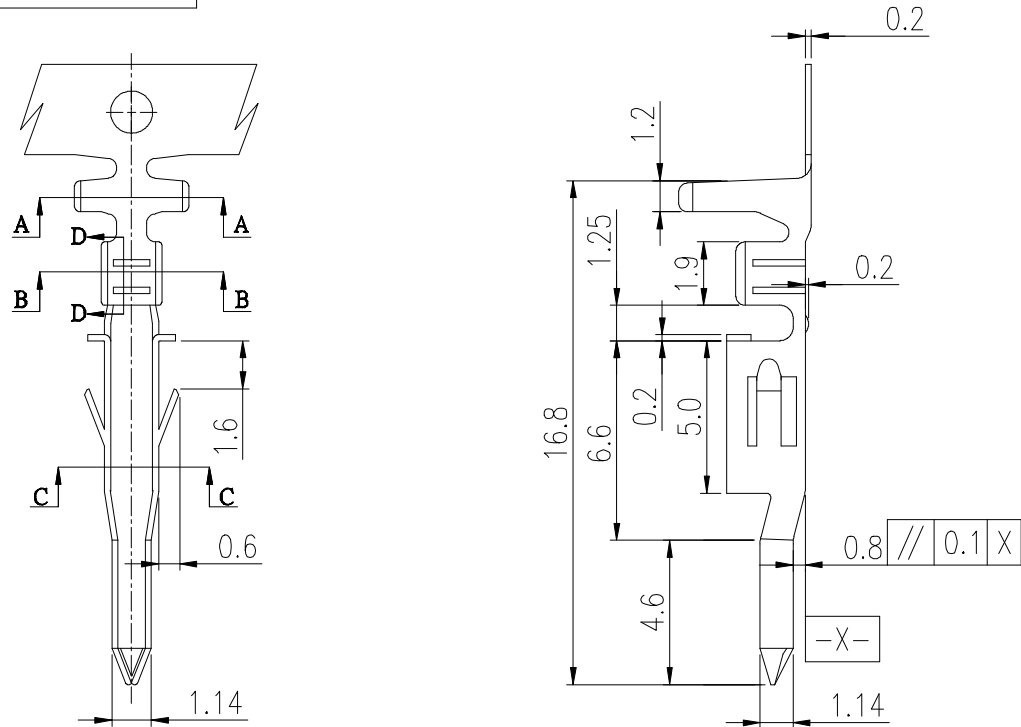
Tel: +86-755-8981 8866 Fax: +86-755-8427 6832

Email & Skype: info@chipsmall.com Web: www.chipsmall.com

Address: A1208, Overseas Decoration Building, #122 Zhenhua RD., Futian, Shenzhen, China



PRODUCT NUMBER  
SEE PART NO. TABLE



NOTES:

1. MATERIAL: OPTIONAL.
2. THIS TERMINAL IS USED WITH FCI PLUG HSG 10127816.
3. PRODUCT SPECIFICATION: GS-12-1181.
4. PACKAGE SPECIFICATION: GS-14-2362.
5. PART NUMBER SCHEME:  
10127818- X X X X LF

PLATING TYPE:  
P: PRE-PLATED  
BLANK: POST-PLATED

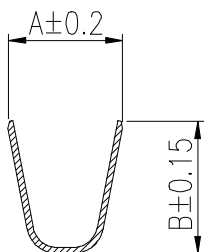
APPLICABLE AWG:  
1. AWG #16~#22  
2. AWG #24~#28

PLATING CODE:  
1: GOLD FLASH  
2: TIN

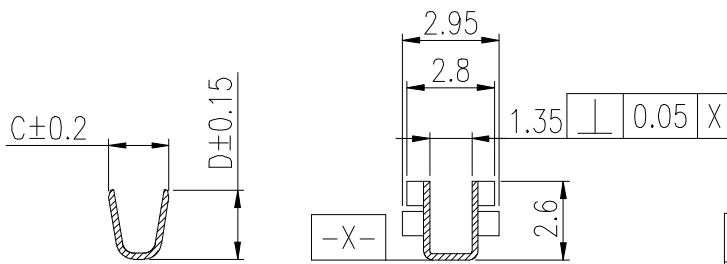
MATERIAL CODE:  
1: PHOSPHORUS BRONZE  
2: BRASS

6. DIMENSIONAL & PART NO. TABLE:

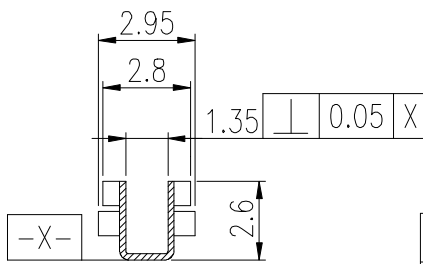
PART NO.	A	B	C	D	APPLICABLE WIRES
10127818-XX2XLF	3.2	3.4	1.8	2.2	#24~#28
10127818-XX1XLF	3.7	4.5	1.8	2.7	#16~#22



SEC A-A



SEC B-B



SEC C-C

mat'l. code		surface		tolerance	projection	product family	
ltr		ecn no	dr	date	tolerances unless otherwise specified		title
A		TAI	2013-11-11		angles	X.X ±0.4	
B	ELX-T-17193	TAI	2014-03-12		flatness	X.XX ±0.3	PLUG TERMINAL FOR MINITEK PWR4.2 WIRE CONNECTOR
C	ELX-T-18006	TAI	2014-06-19		total run out	X*±1*	
					scale		
					dr	KENNY TAI	2013-11-11
					enr	KENNY TAI	2013-11-11
					chr	KENNY TAI	2013-11-11
					appd	PM ZHENG	2013-11-22
sheet index	revision sheet	C	1				



product family  
title  
PLUG TERMINAL FOR MINITEK  
PWR4.2 WIRE CONNECTOR  
dwg no  
10127818  
sheet 1 of 1  
size  
A4  
type  
CUSTOMER Drawing