



Chipsmall Limited consists of a professional team with an average of over 10 year of expertise in the distribution of electronic components. Based in Hongkong, we have already established firm and mutual-benefit business relationships with customers from,Europe,America and south Asia,supplying obsolete and hard-to-find components to meet their specific needs.

With the principle of “Quality Parts,Customers Priority,Honest Operation,and Considerate Service”,our business mainly focus on the distribution of electronic components. Line cards we deal with include Microchip,ALPS,ROHM,Xilinx,Pulse,ON,Everlight and Freescale. Main products comprise IC,Modules,Potentiometer,IC Socket,Relay,Connector.Our parts cover such applications as commercial,industrial, and automotives areas.

We are looking forward to setting up business relationship with you and hope to provide you with the best service and solution. Let us make a better world for our industry!



Contact us

Tel: +86-755-8981 8866 Fax: +86-755-8427 6832

Email & Skype: info@chipsmall.com Web: www.chipsmall.com

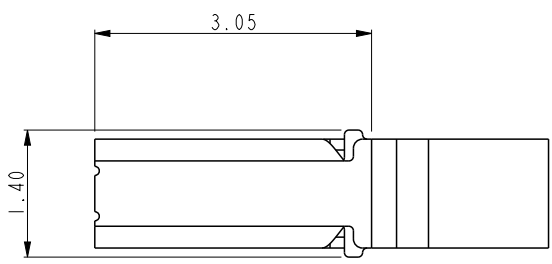
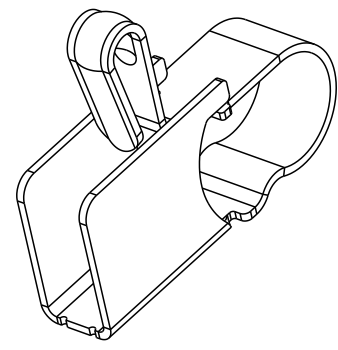
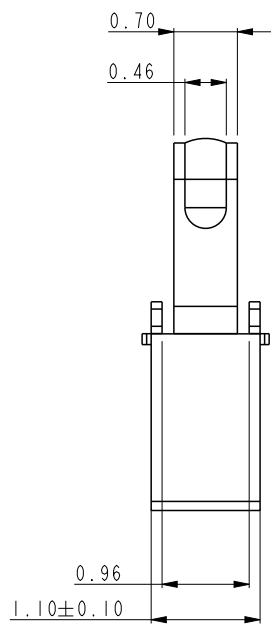
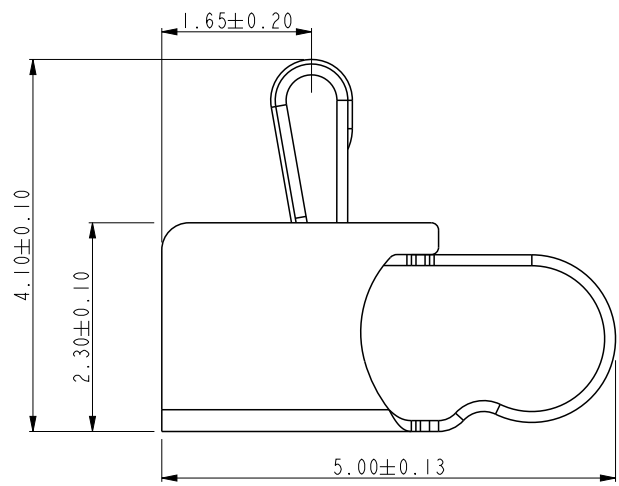
Address: A1208, Overseas Decoration Building, #122 Zhenhua RD., Futian, Shenzhen, China





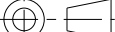



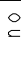
Copyright FCI.

	PRODUCT NO.
FCI	10128875-009RLF



NOTES:
1.MATERIAL: COPPER ALLOY.
2.CONTACT PLATING:
CONTACT AREA: PLATING 1um GXT OVER Ni UNDERPLATE.
SOLDER AREA : PLATING GOLD FLASH OVER Ni UNDERPLATE.
3.PACKAGING: TAPE & REEL
4.PART NUMBER DESCRIPTION:
10128875-0 0 X X X
LF:LEAD FREE
R :TAPE AND REEL
CONTACT PLATING:
9 : 1um GXT over Ni

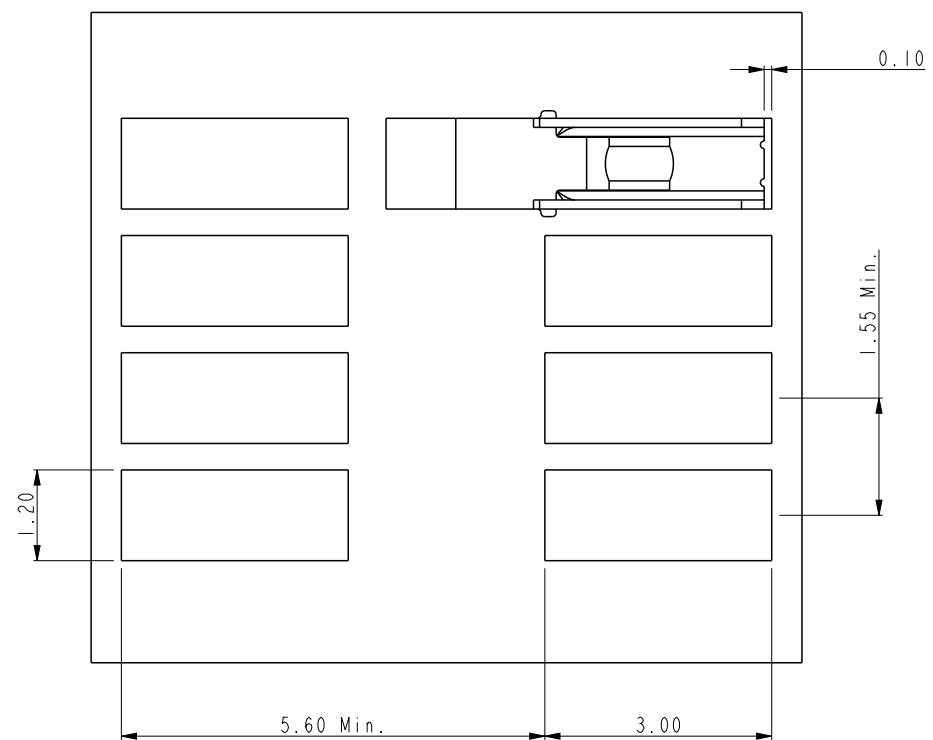
rev	ecn no	dr	date
A	INITIAL RELEASE	AL	2014-05-12

spec ref *				dr Andy Lu 2014/05/11		projection 	 mm	size A4	scale 12.000
tolerance std		TOLERANCES UNLESS OTHERWISE SPECIFIED		eng Andy Lu 2014/05/13				ecn no -	
ASME Y14.5				chr - -					
				appr Pei-Ming Zheng 2014/05/13				product family -	
surface 	linear	0.X	±0.3		title ANTENNA CONNECTOR UNIVERSAL CONTACT	 dwg no	10128875		rev A
		0.XX	±0.15						
		0.XXX	±0.050						
ASME Y14.5	angular	0°	±2°	www.fci.com	cat. no.				

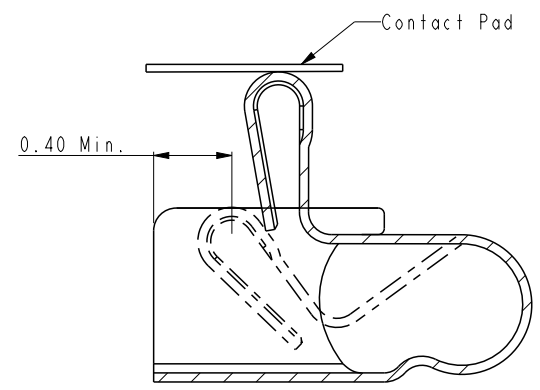
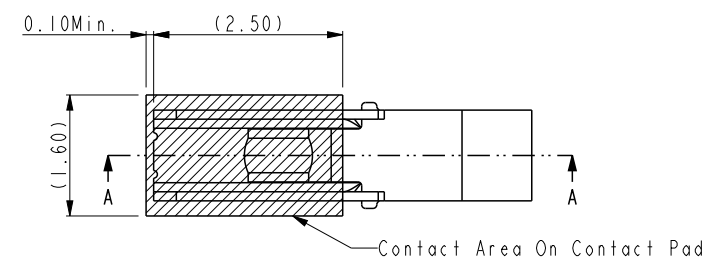
PrintE File - REV C - 2009-06-09



Copyright FCI.



RECOMMENDED PCB DIMENSION & MIN. PITCH
TOLERANCE: +/-0.05



SECTION A-A
SCALE 10.000

RECOMMENDED CONTACT AREA DIMENSION

- NOTES(PCB):
- 1. CONTACT AREA PLATING:
PLATING GOLD 0.75um MIN OVER NICKLE.
 - 2. CLEANNESS, FLATNESS AND OTHER RELEVANT REQUIREMENTS
SHALL BE IN ACCORDANCE WITH IPC A-600H.
 - 3. FOR REFERENCE ONLY AND DETAIL SPECIFICATION SHOULD
BE DEFINED BY CUSTOMER ACCORDINGLY TO MANUFACTURING
PROCESS.

spec ref *				dr Andy Lu		2014/05/11		projection		mm		size A4		scale 12.000			
tolerance std				eng Andy Lu		2014/05/13						ecn no -					
ASME Y14.5				chr -		-						rel level Released					
TOLERANCES UNLESS OTHERWISE SPECIFIED				appr Pei-Ming Zheng		2014/05/13		product family -									
surface		linear		0.X ±0.3		0.XX ±0.15		0.XXX ±0.050				title ANTENNA CONNECTOR		dwg no 10128875		rev A	
ASME Y14.5		angular		0° ±2°		www.fci.com		cat. no.		Product - Customer Drw				sheet 2 of 2			

PrintE File - REV C - 2009-06-09