



Chipsmall Limited consists of a professional team with an average of over 10 year of expertise in the distribution of electronic components. Based in Hongkong, we have already established firm and mutual-benefit business relationships with customers from,Europe,America and south Asia,supplying obsolete and hard-to-find components to meet their specific needs.

With the principle of "Quality Parts,Customers Priority,Honest Operation,and Considerate Service",our business mainly focus on the distribution of electronic components. Line cards we deal with include Microchip,ALPS,ROHM,Xilinx,Pulse,ON,Everlight and Freescale. Main products comprise IC,Modules,Potentiometer,IC Socket,Relay,Connector.Our parts cover such applications as commercial,industrial, and automotives areas.

We are looking forward to setting up business relationship with you and hope to provide you with the best service and solution. Let us make a better world for our industry!



Contact us

Tel: +86-755-8981 8866 Fax: +86-755-8427 6832

Email & Skype: info@chipsmall.com Web: www.chipsmall.com

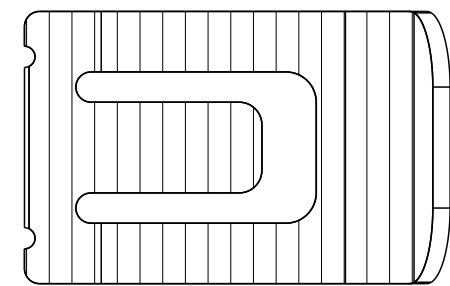
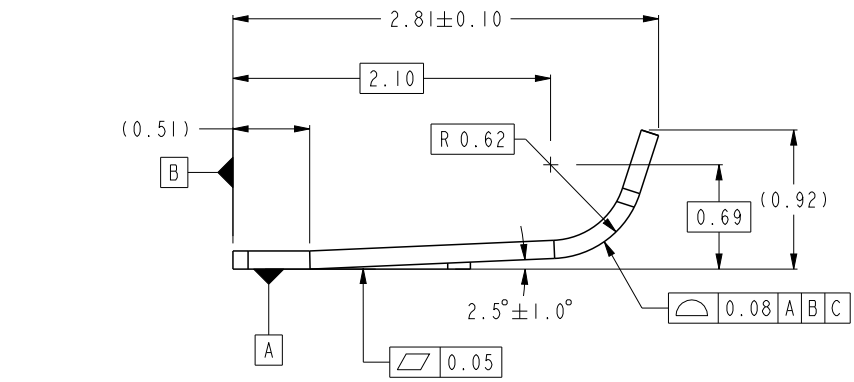
Address: A1208, Overseas Decoration Building, #122 Zhenhua RD., Futian, Shenzhen, China



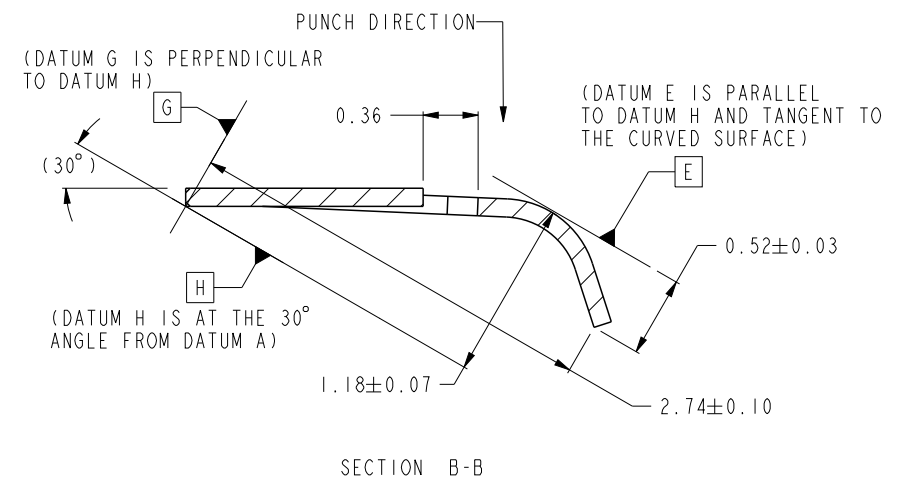
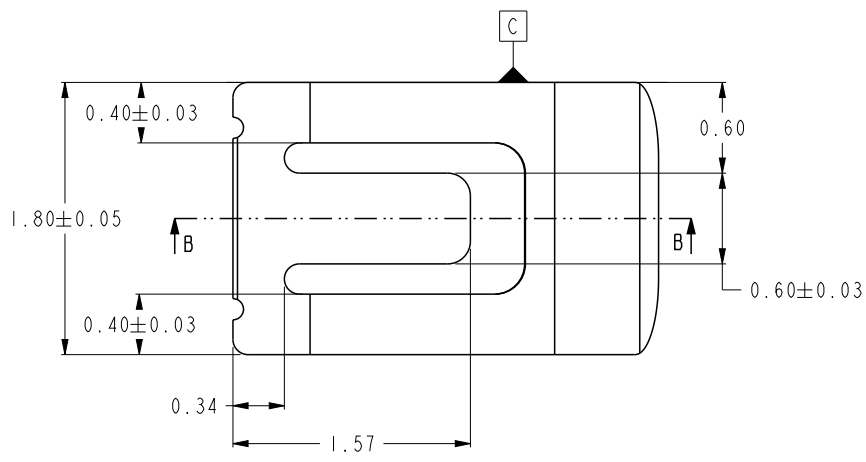


Copyright FCI.

FCI PART NO.	APPLE PART NO.
10129746-001RLF	806-01350



GRAIN DIRECTION



spec ref *				dr Eric Jiang		2014/04/11		projection		mm		size A4		scale 20 : 1					
tolerance std		TOLERANCES UNLESS OTHERWISE SPECIFIED				eng Andy Lu		2014/11/25											
ASME Y14.5						chr -		-											
						appr Pei-Ming Zheng		2014/11/26								product family -		ecn no ELX-DG-19537-1	
																		rel level Released	
surface		linear		0.X		±0.1				title UNIVERSAL CONTACT		dwg no 10129746		rev D					
		0.XX		±0.05															
		0.XXX		±															
ASME Y14.5		angular		0°		±1.5°		www.fci.com		cat. no.		Product - Customer Drw				sheet 1 of 2			

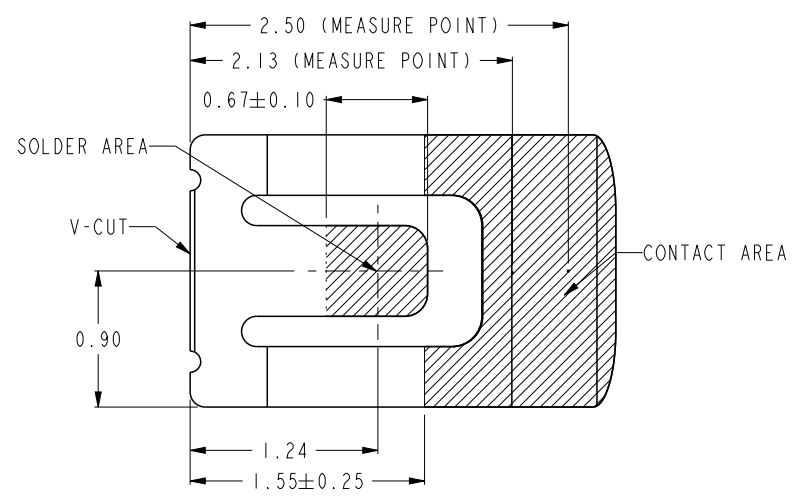
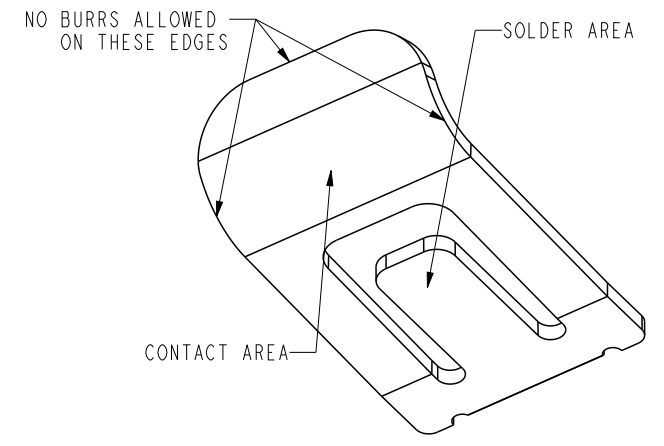
Print File - REV C - 2009-06-09



Copyright FCI.

FCI PART NO.	APPLE PART NO.
10129746-001RLF	806-01350

NOTES:
1.MATERIAL: COPPER ALLOY, 0.120+/-0.010 THICK.
2.CONTACT PLATING:
CONTACT AREA: PLATING 0.70um Au NOMINAL OVER 2um Ni UNDERPLATE,
SOLDER AREA : PLATING 0.05um Au NOMINAL,0.15um MAX
OVER 2um Ni UNDERPLATE.
3.ALL SURFACES TO BE WITHIN A SURFACE FROFILE TOLERANCE OF 0.10mm.
4.MAXIMUM BURR ALLOWANCE IS 0.02mm EXCEPT V-CUT AREA.
5.PACKAGING SPECIFICATION: GS-14-1216;
6.PRODUCT SPECIFICATION: GS-12-1236;
7.CONTACT SURFACE ROUGHNESS MUST BE LESS THAN 1000NM SA,
8.THE PRODUCTS WHERE THE PART NUMBER ENDS IN LF MET THE EUROPEAN UNION
DIRECTIVE AND OTHER COUNTRY REGULATIONS AS DESCRIBED IN GS-12-008.
9.PART NUMBER DESCRIPTION:
10129746-0 0 X X X
LF: LEAD FREE
R: TAPE & REEL
CONTACT PLATING:
I: 0.70um Au OVER Ni



spec ref *				dr Eric Jiang		2014/04/11		projection		mm		size A4		scale 20:1			
tolerance std		TOLERANCES UNLESS OTHERWISE SPECIFIED				eng Andy Lu		2014/11/25				ecn no ELX-DG-19537-1					
ASME Y14.5						chr -		-									
						appr Pei-Ming Zheng		2014/11/26								product family -	
												rel level Released					
surface -		linear		0.X		±0.1				title UNIVERSAL CONTACT		dwg no 10129746		rev D			
		0.XX		±0.05													
		0.XXX		±													
ASME Y14.5		angular		0°		±1.5°		www.fci.com		cat. no. 10104320		Product - Customer Drw				sheet 2 of 2	