



Chipsmall Limited consists of a professional team with an average of over 10 year of expertise in the distribution of electronic components. Based in Hongkong, we have already established firm and mutual-benefit business relationships with customers from,Europe,America and south Asia,supplying obsolete and hard-to-find components to meet their specific needs.

With the principle of “Quality Parts,Customers Priority,Honest Operation,and Considerate Service”,our business mainly focus on the distribution of electronic components. Line cards we deal with include Microchip,ALPS,ROHM,Xilinx,Pulse,ON,Everlight and Freescale. Main products comprise IC,Modules,Potentiometer,IC Socket,Relay,Connector.Our parts cover such applications as commercial,industrial, and automotives areas.

We are looking forward to setting up business relationship with you and hope to provide you with the best service and solution. Let us make a better world for our industry!



Contact us

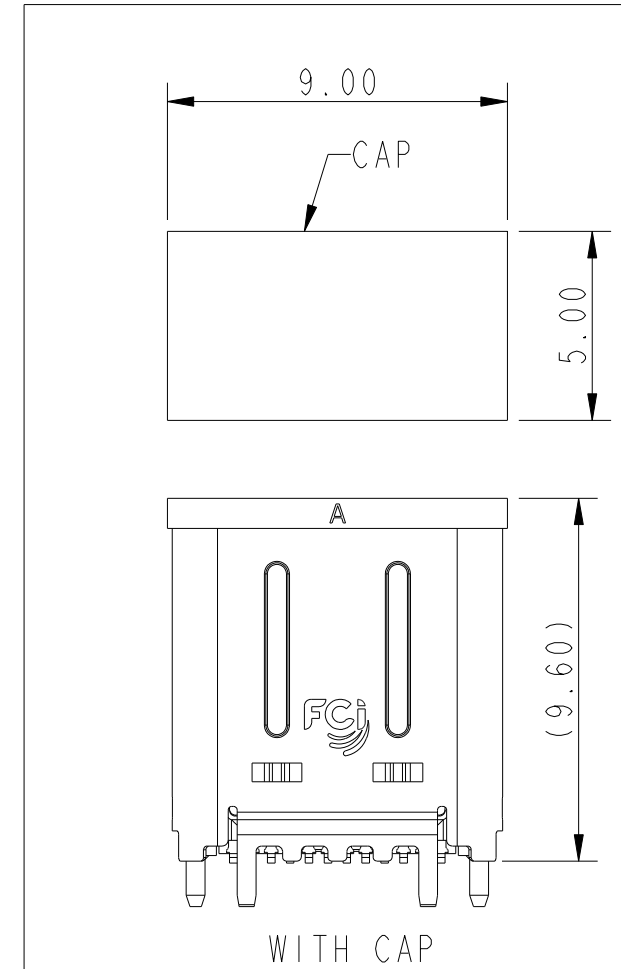
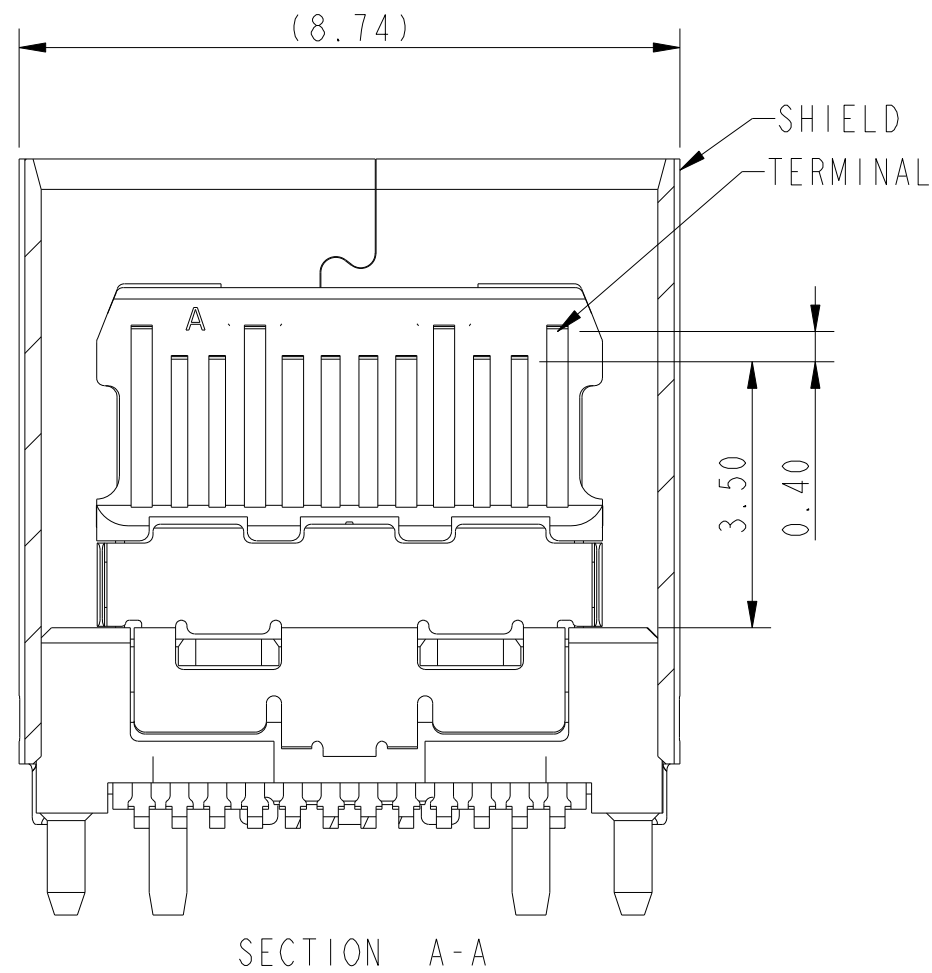
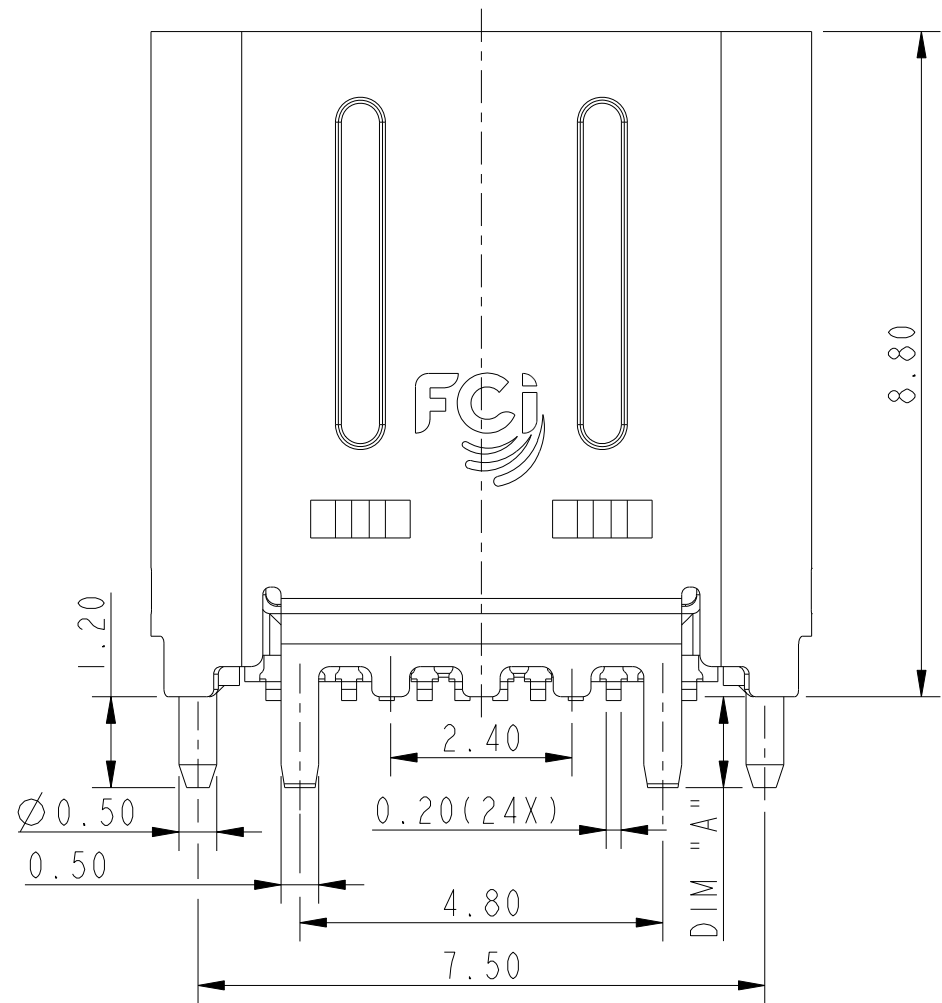
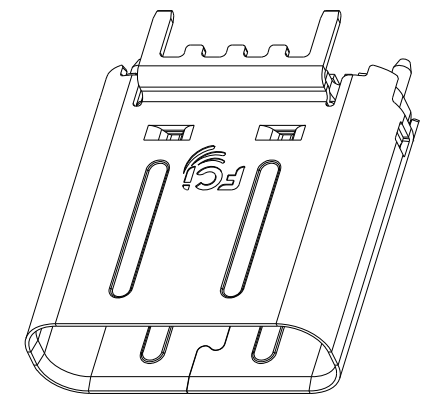
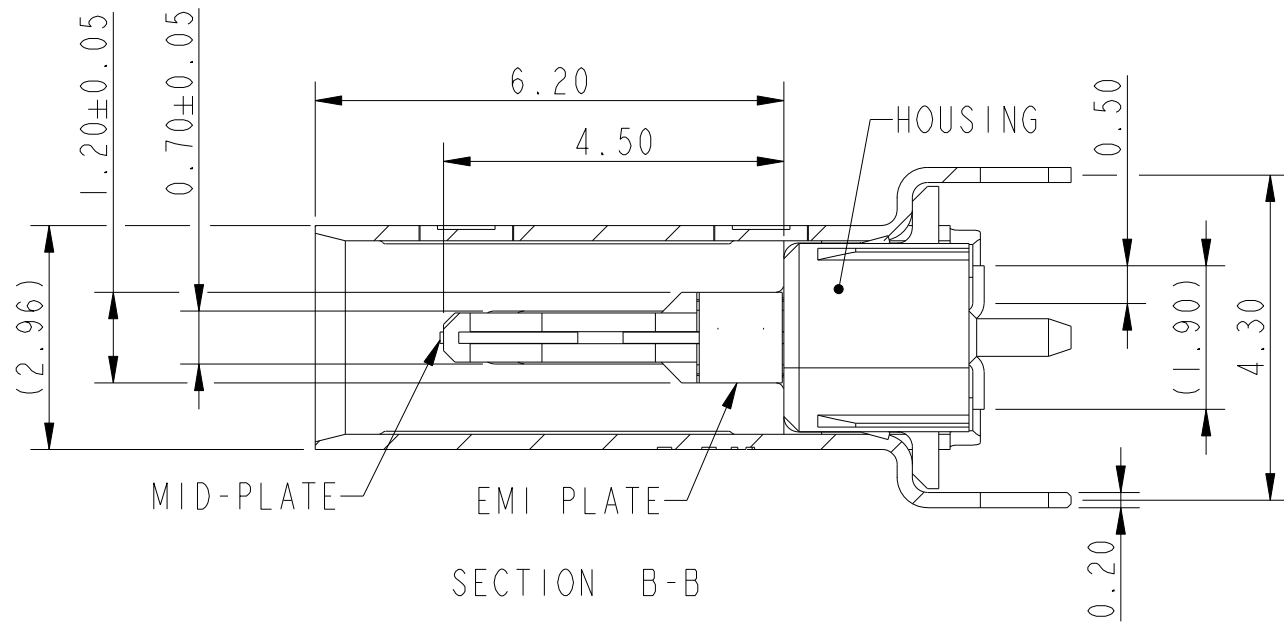
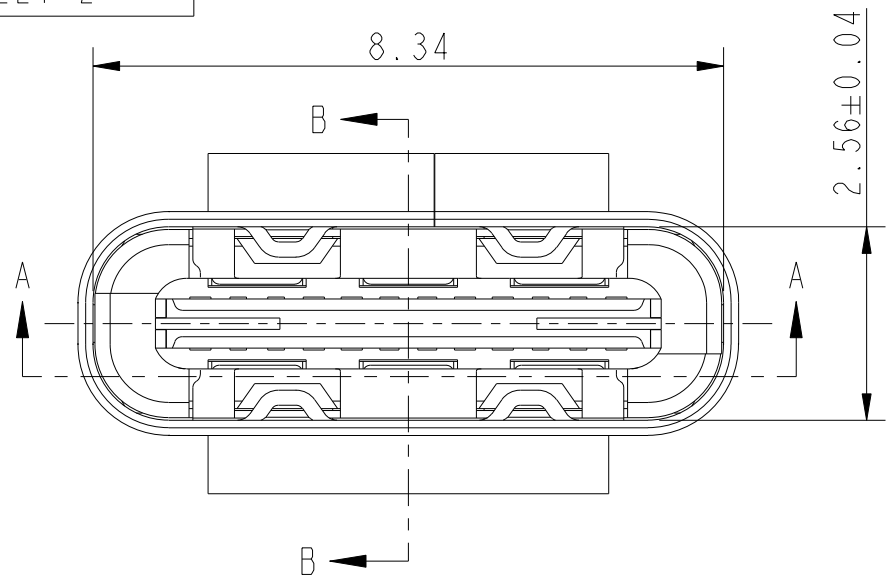
Tel: +86-755-8981 8866 Fax: +86-755-8427 6832

Email & Skype: info@chipsmall.com Web: www.chipsmall.com

Address: A1208, Overseas Decoration Building, #122 Zhenhua RD., Futian, Shenzhen, China



PART NUMBER
SEE SHEET 2



spec ref	-	dr	Li-Qing Lei	2014/11/20	projection	mm	size	A3	scale	10:1
tolerance std	ISO 406 ISO 1101	eng	Li-Qing Lei	2017/01/05			ecn no	-	rel level	Released
TOLERANCES UNLESS OTHERWISE SPECIFIED		chr	-	-			product family	-	rel level	Released
surface	linear	0.X	±0.25	Amphenol FCI	USB3.1 Type-C Vertical, Receptacle		dwg no 10132328	rev A		
		0.XX	±0.15							
		0.XXX	±0.10							
ISO 1302	angular	0°	±2°	cat. no.	-	Product - Customer Drw	sheet 1 of 3			

Amphenol FCI

© 2016 AFCI

NOTE:

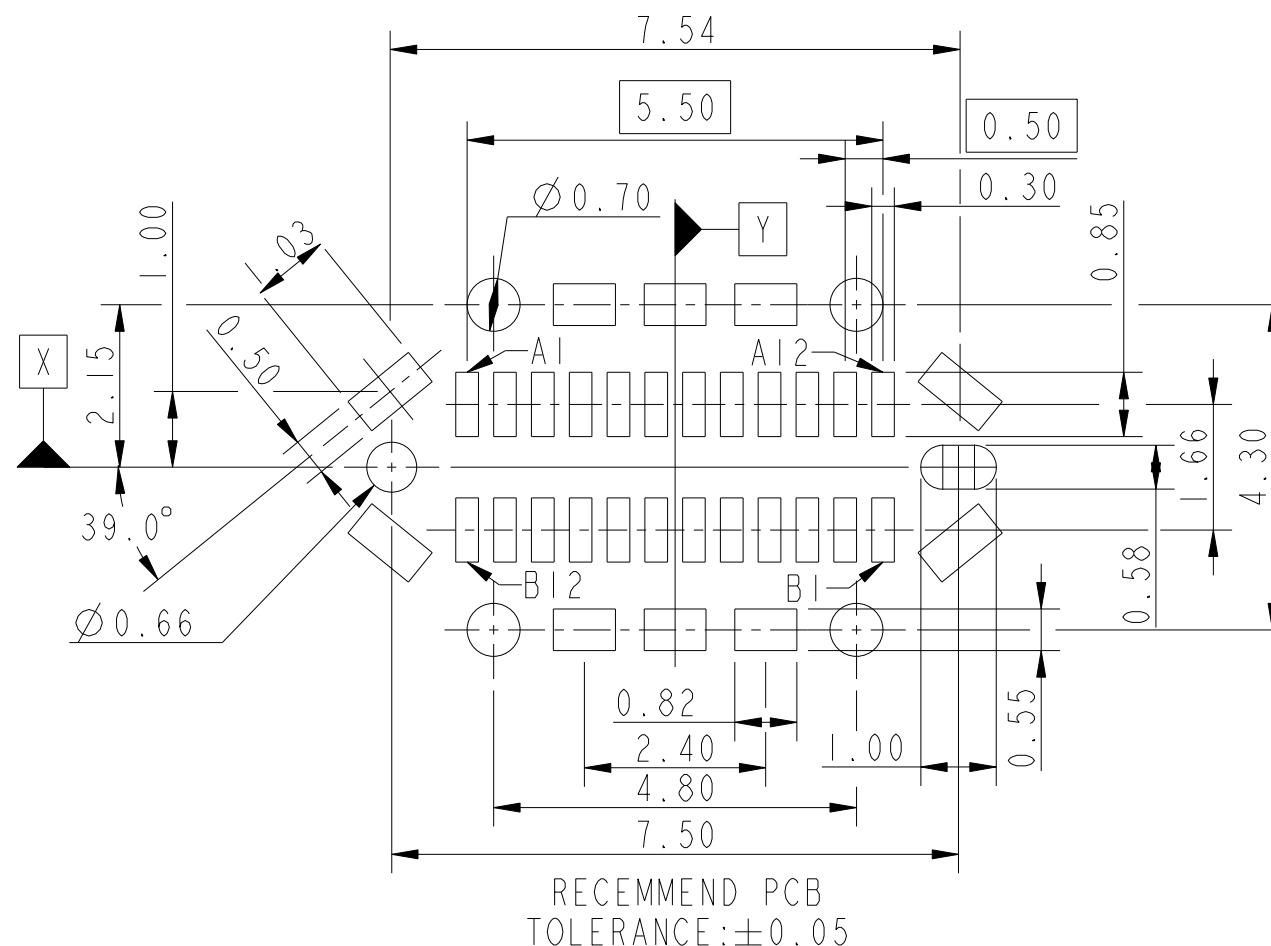
1. MATERIAL:
 - 1.1 HSG: THERMOPLASTIC, BLACK, UL94-V0
 - 1.2 TERMINAL: COPPER ALLOY
 - 1.3 EMI PLATE: STAINLESS STEEL
 - 1.4 MID PLATE: STAINLESS STEEL
 - 1.5 SHIELD: STAINLESS STEEL
2. PLATING:
 - 2.1 TERMINAL: (Min) 0.05 um Au + (Min) 0.75 um Ni-Pd ON CONTACT AREA
 - 2.2 SHELL: PLATING 0.74um MIN Ni OVER AREA.
 - 2.3 EMI: PLATING 0.74um MIN Ni OVER AREA.
 - 2.4 CENTER PLATE: PLATING 0.74 MIN Ni OVER AREA.
3. MECHANICAL CHARACTER:
 - 3.1 INSERTION FORCE: 5~20N;
 - 3.2 EXTRACTION FORCE: 8~20N INITIAL, 6~20N AFTER DURABILITY;
 - 3.3 DURABILITY: 10,000 CYCLES;
 - 3.4 OPERATION TEMPERATURE: -55°C TO +85°C
4. ELECTRICAL CHARACTER:
 - 4.1 LLCR : 40mΩ INITIAL, 50mΩ MAX AFTER ENVIRONMENT TEST;
 - 4.2 INSULATION RESISTANCE: 100MΩ MIN AT 250V DC.
 - 4.3 DIELECTRIC WITHSTAND VOLTAGE: 100VAC MIN.
5. THE HOUSING WILL WITHSTAND EXPOSURE TO 260°C PEAK TEMPERATURE FOR 20 SECONDS IN A CONVECTION, INFRA-RED OR VAPOR PHASE REFLOW ;
6. LEAD FREE PRODUCT MEETS EUROPEAN UNION DIRECTIVES AND OTHER COUNTRY REGULATIONS AS DISCRIBLED IN GS-22-008
7. PRODUCT SPEC: GS-12-1299
8. SOLDER TAILL TO BE COPLANAR WITHIN 0.10 TO EACH OTHER

PRODUCT NUMBER CODE:
10132328-100XXLF

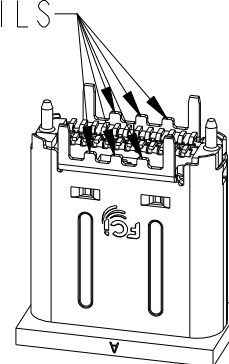
- THE LENGTH OF SHELL'S LEG OPTION
1. DIM"A"=1.2 WITH 6 SMT TAILS IN THE MIDDLE
 2. DIM"A"=1.6 WITH 6 SMT TAILS IN THE MIDDLE
 3. DIM"A"=1.2 WITHOUT 6 SMT TAILS IN THE MIDDLE
 4. DIM"A"=1.6 WITHOUT 6 SMT TAILS IN THE MIDDLE

- GROUND PIN STATUS (A1/A12/B1/B12)
0. SEPARATED
 1. CONNECTED

AVAILABLE P/N:
10132328-1000ILF
10132328-1001ILF
10132328-10013LF



6 SMT TAILS



PIN ASSIGNMENTS

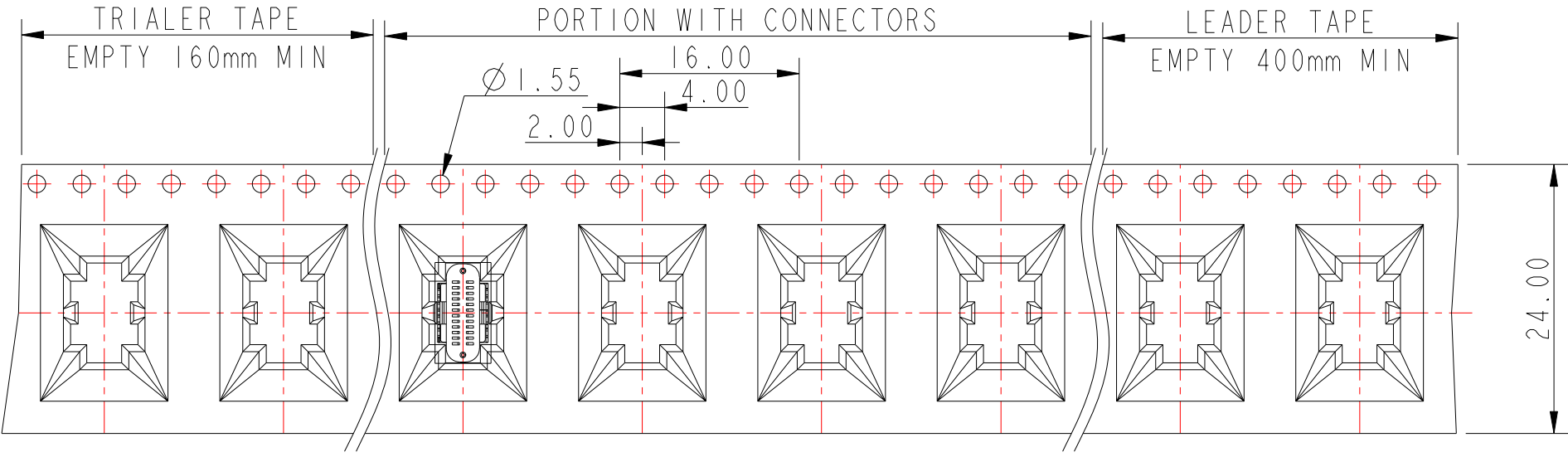
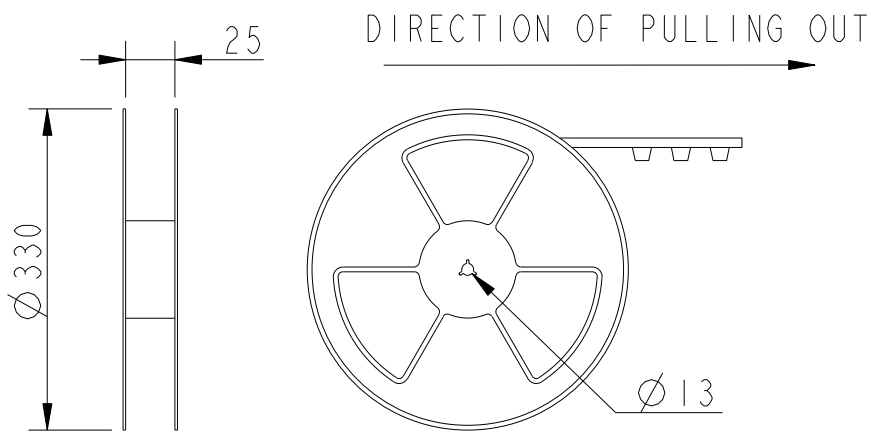
PIN	SIGNAL NAME	PIN	SIGNAL NAME
A1	GND	B12	GND
A2	SSTXp1	B11	SSRXp1
A3	SSTXn1	B10	SSRXn1
A4	VBUS	B9	VBUS
A5	CC1	B8	SBU2
A6	Dp1	B7	Dn2
A7	Dn1	B6	Dp2
A8	SBU1	B5	CC2
A9	VBUS	B4	VBUS
A10	SSRXn2	B3	SSTXn2
A11	SSRXp2	B2	SSTXp2
A12	GND	B1	GND

NOTE: TX AND RX ARE DEFINED FORM THE HOST PERSPECTIVE

spec ref	-	dr	Li-Qing Lei	2014/11/20	projection	mm	size	A3	scale	10:1
tolerance std	ISO 406 ISO 1101	eng	Li-Qing Lei	2017/01/05			ecn no		-	
TOLERANCES UNLESS OTHERWISE SPECIFIED		chr	-	-			rel level		Released	
surface	linear	appr	Tim Yao	2017/01/05	product family		-		rev	A
	angular			title USB3.1 Type-C Vertical, Receptacle		dwg no 10132328		sheet 2 of 3		
ISO 1302	0.X ±0.25 0.XX ±0.15 0.XXX ±0.10	cat. no.		Product - Customer Drw		-		-		

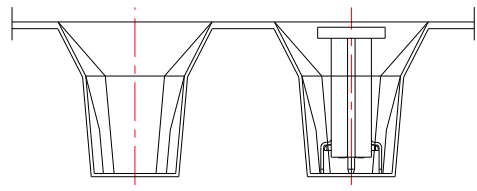
TAPE REEL PACKAGE
Q'TY: (350)EA/REEL

A



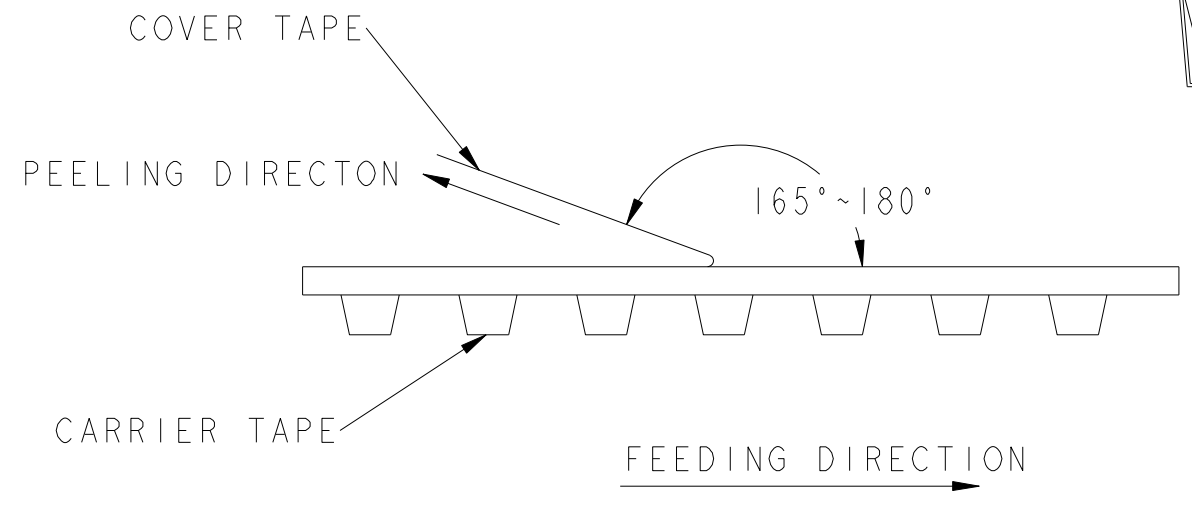
B

B



C

C



SHOWS THE METHOD OF COVER TAPE'S PEELING FORCE MEASUREMENT.
PEELING FORCE MUST BE 0.1 TO 1.3N AT THE SPEED OF 300MM/MIN.

D

D

spec ref	-	dr	Li-Qing Lei	2014/11/20	projection	mm	size	A3	scale	1:1
tolerance std	ISO 406 ISO 1101	eng	Li-Qing Lei	2017/01/05			ecn no	-	rel level	Released
TOLERANCES UNLESS OTHERWISE SPECIFIED		chr	-	-						
surface	ISO 1302	appr	Tim Yao	2017/01/05	product family		rel level	Released		
	linear	0.X	± 0.25		title USB3.1 Type-C Vertical, Receptacle	dwg no 10132328	rev A			
		0.XX	± 0.15							
		0.XXX	± 0.10							
	angular	0°	$\pm 2^{\circ}$	cat. no.	Product - Customer Drw		sheet 3 of 3			