



Chipsmall Limited consists of a professional team with an average of over 10 year of expertise in the distribution of electronic components. Based in Hongkong, we have already established firm and mutual-benefit business relationships with customers from,Europe,America and south Asia,supplying obsolete and hard-to-find components to meet their specific needs.

With the principle of “Quality Parts,Customers Priority,Honest Operation,and Considerate Service”,our business mainly focus on the distribution of electronic components. Line cards we deal with include Microchip,ALPS,ROHM,Xilinx,Pulse,ON,Everlight and Freescale. Main products comprise IC,Modules,Potentiometer,IC Socket,Relay,Connector.Our parts cover such applications as commercial,industrial, and automotives areas.

We are looking forward to setting up business relationship with you and hope to provide you with the best service and solution. Let us make a better world for our industry!



Contact us

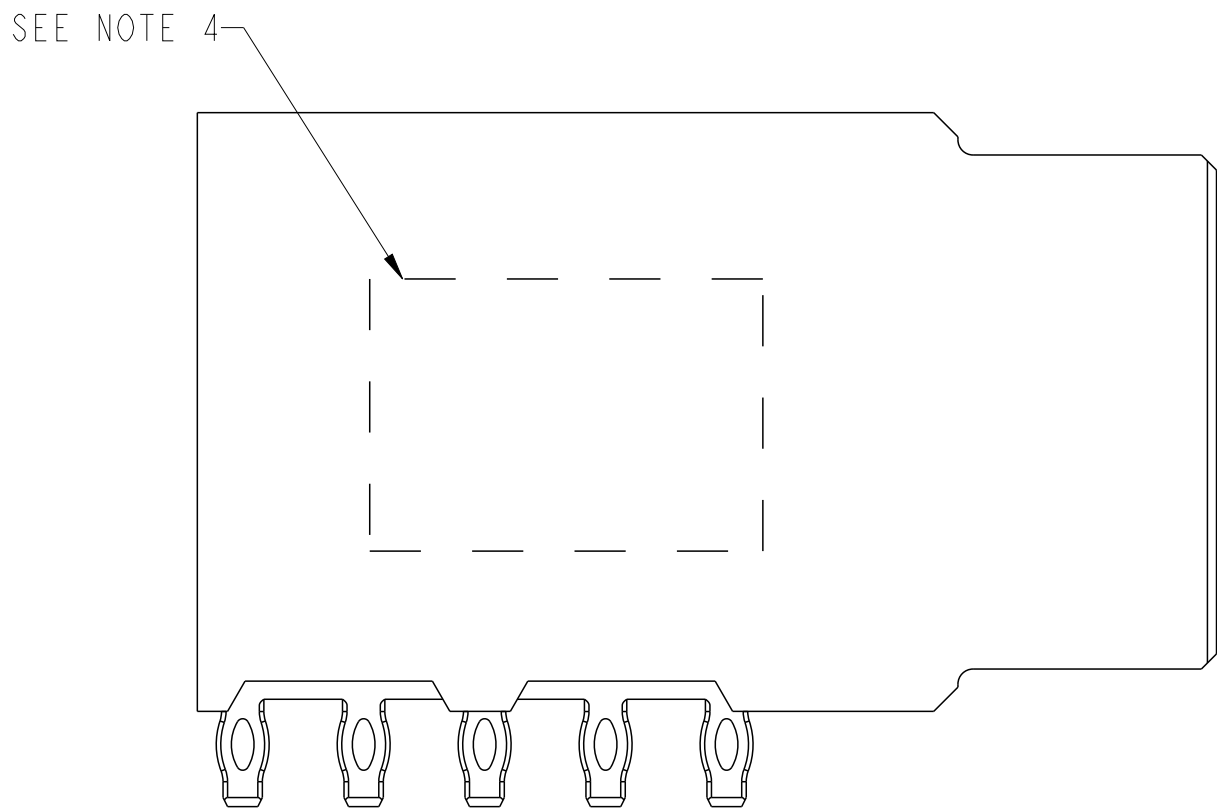
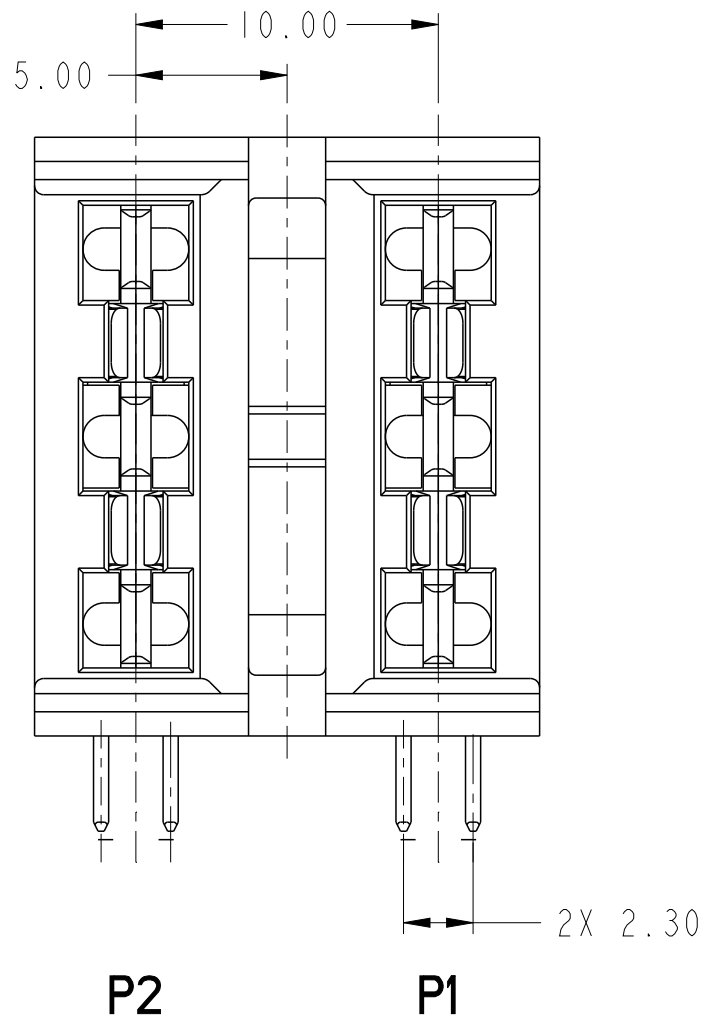
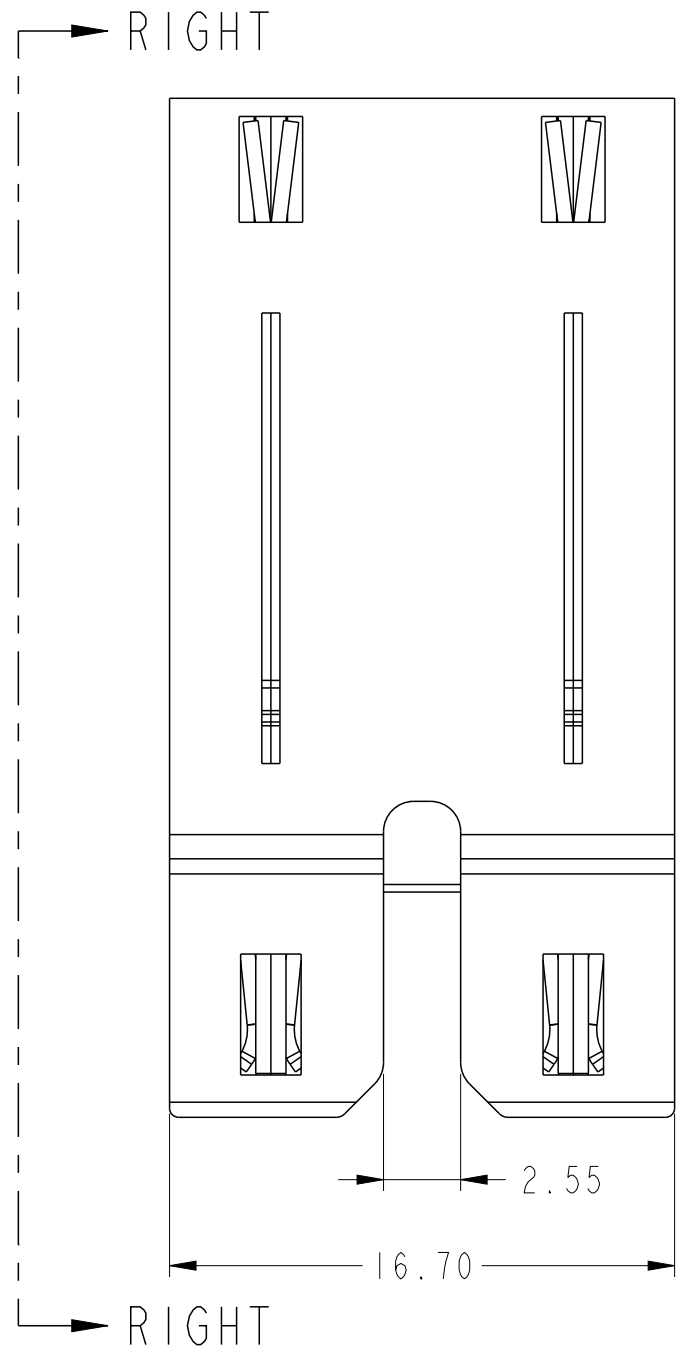
Tel: +86-755-8981 8866 Fax: +86-755-8427 6832

Email & Skype: info@chipsmall.com Web: www.chipsmall.com

Address: A1208, Overseas Decoration Building, #122 Zhenhua RD., Futian, Shenzhen, China

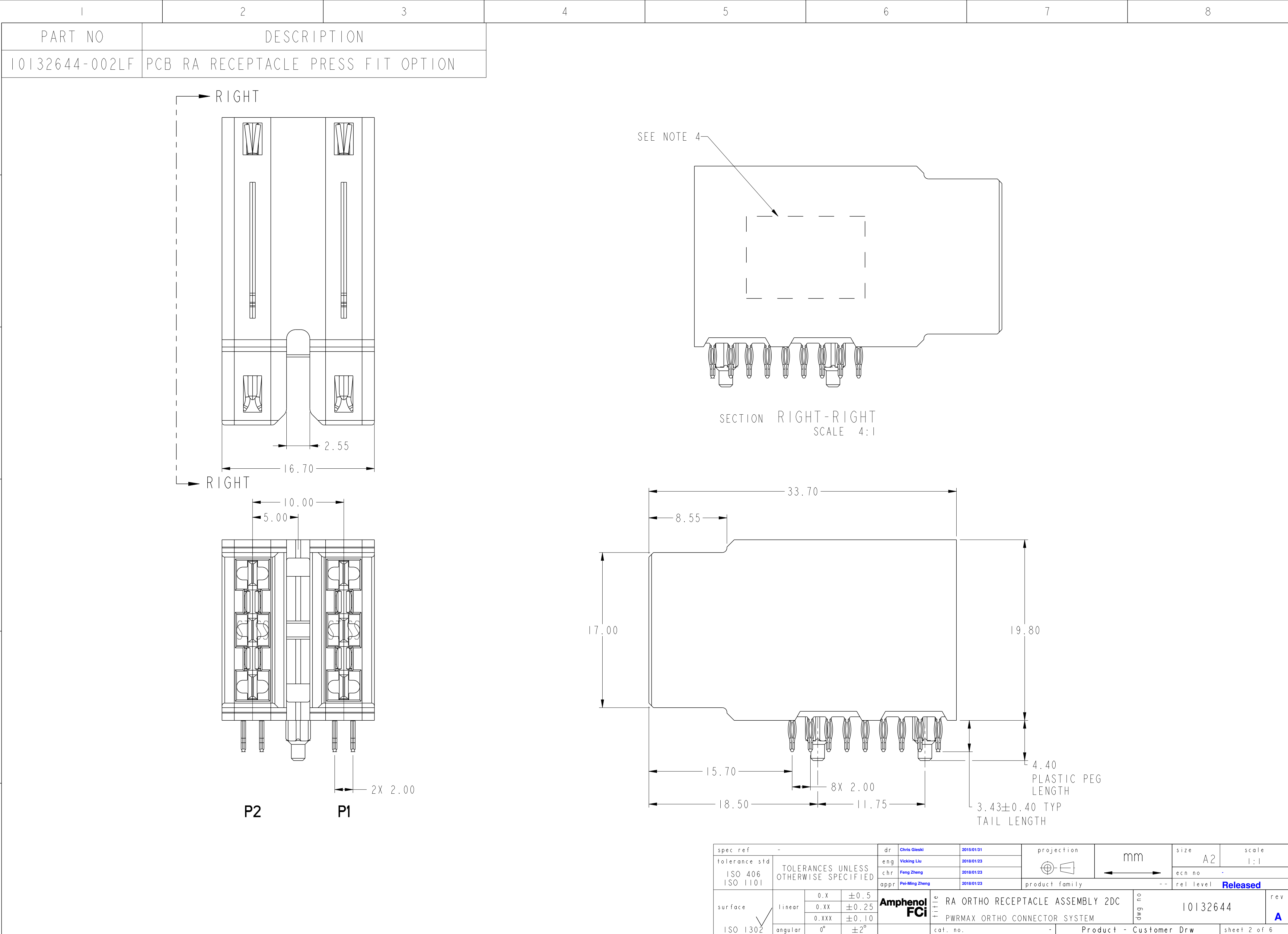


PART NO	DESCRIPTION
10132644-001LF	BUSBAR RA RECEPTACLE PRESS FIT OPTION



RIGHT-RIGHT
SCALE 4:1

spec ref	-	dr	Chris Gieski	2015/01/31	projection	mm	size	A2	scale	4:1
tolerance std	ISO 406 ISO 1101	eng	Vicking Liu	2018/01/23	chr	Feng Zheng	ecn no	-	rel level	Released
surface	ISO 1302	appr	Pei-Ming Zheng	2018/01/23	product family	-	cat. no.	-	Product - Customer Drw	sheet 1 of 6
linear	0.X ±0.5 0.XX ±0.25 0.XXX ±0.10	Amphenol FCi	title	RA ORTHO RECEPTACLE ASSEMBLY 2DC PWRMAX ORTHO CONNECTOR SYSTEM	dwg no	10132644	rev	A		
angular	0° ±2°									



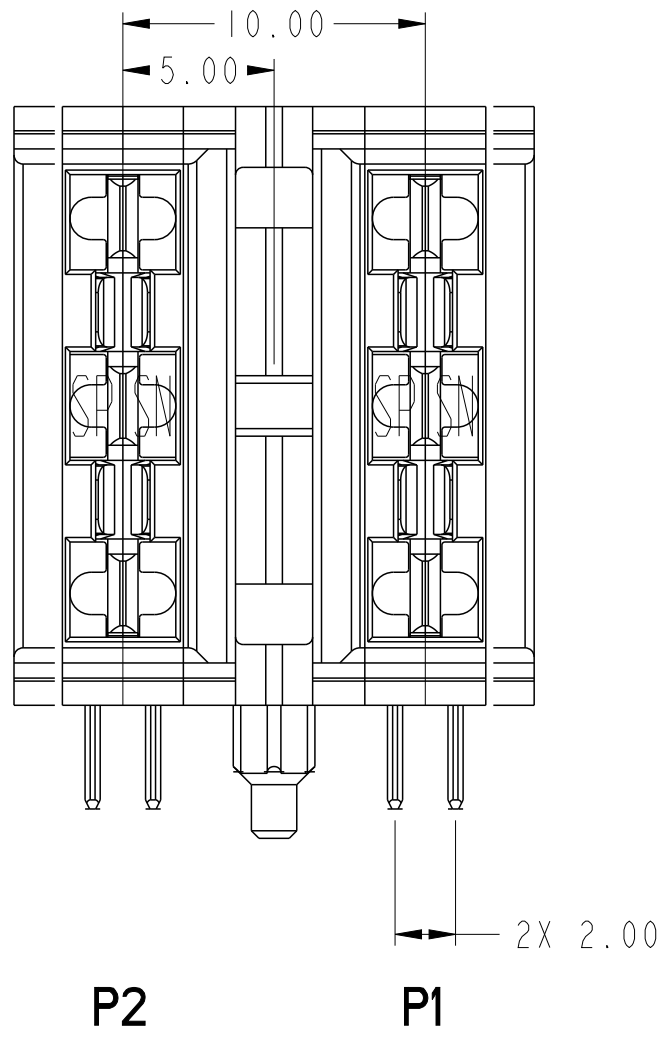
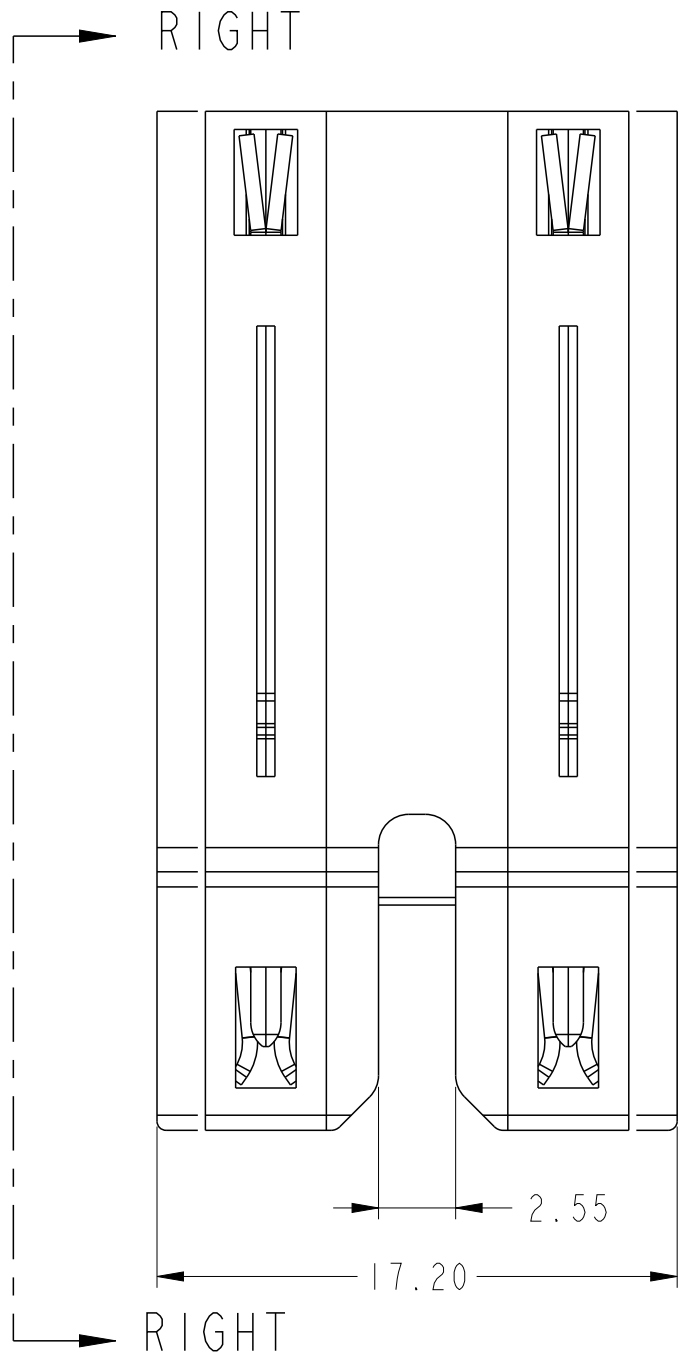
Amphenol
FCI

© 2016 APCI

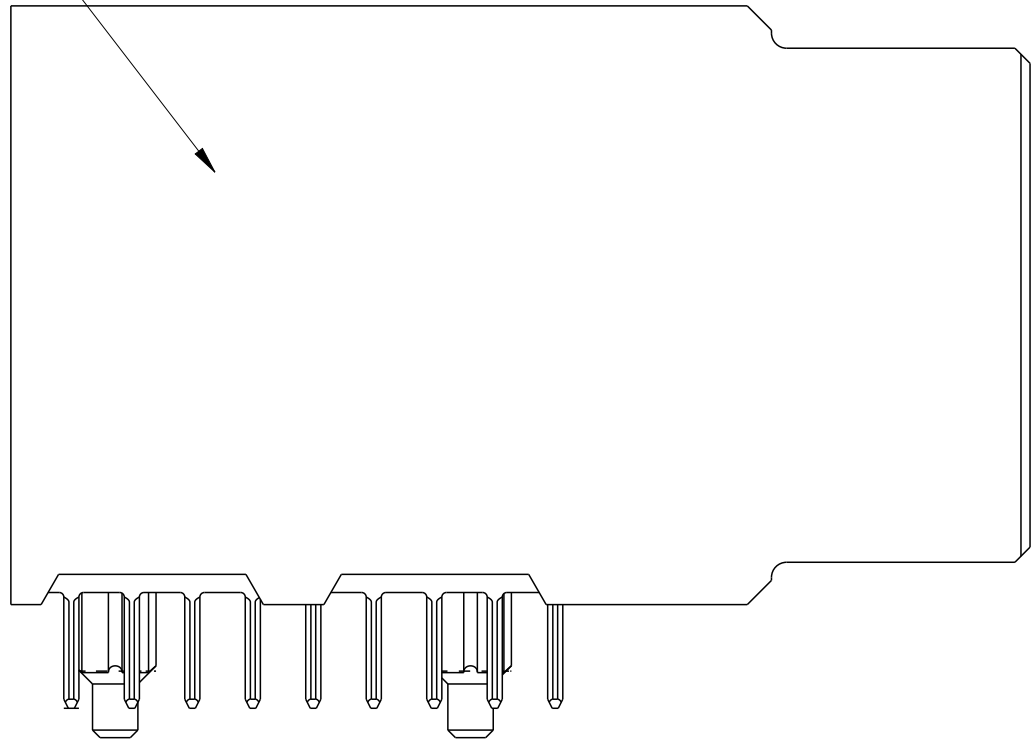
Amphenol
FCi

© 2016 AFCi

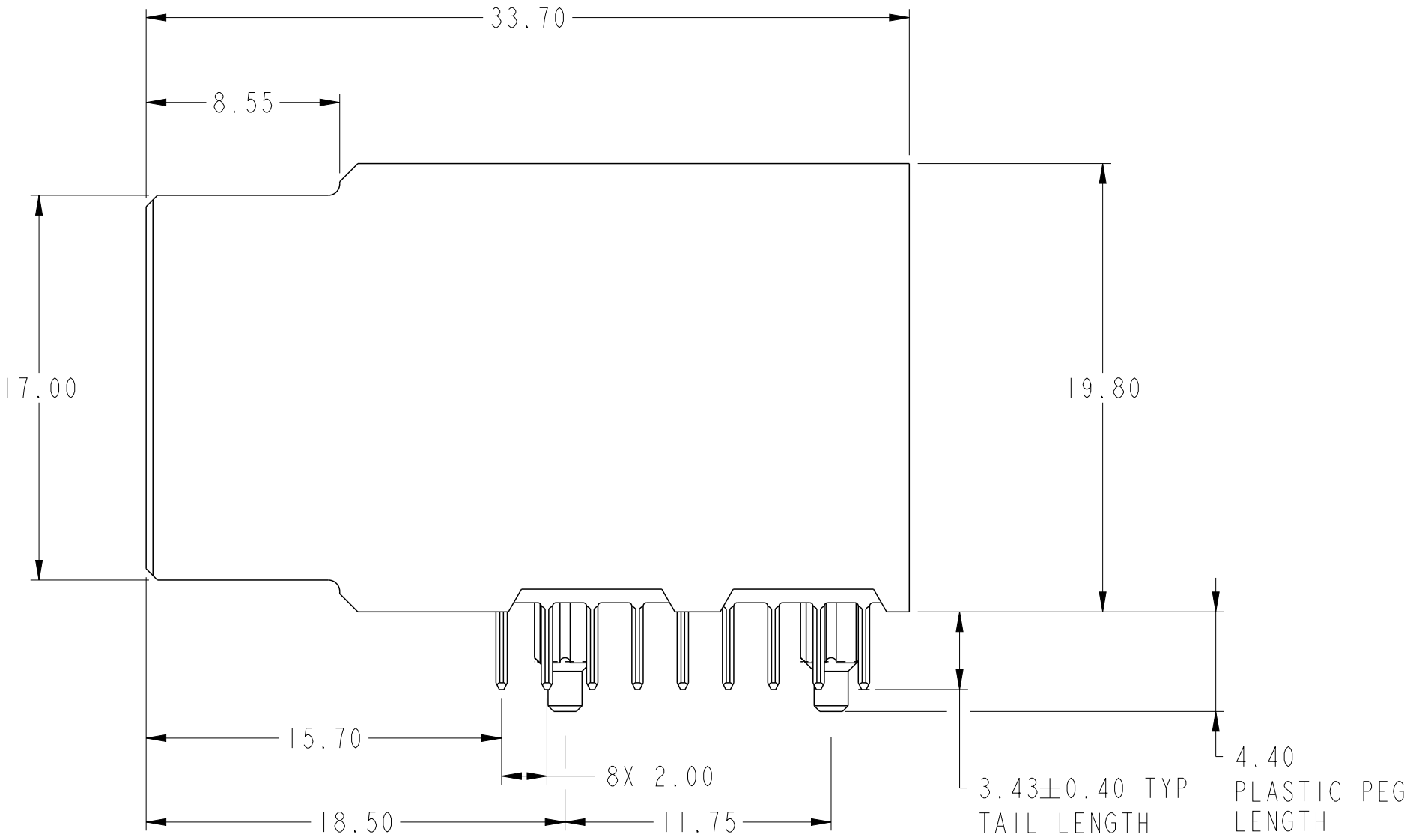
PART NO	DESCRIPTION
10132644-003LF	PCB RA RECEPTACLE STB OPTION





SEE NOTE 4



SECTION RIGHT-RIGHT
SCALE 4:1

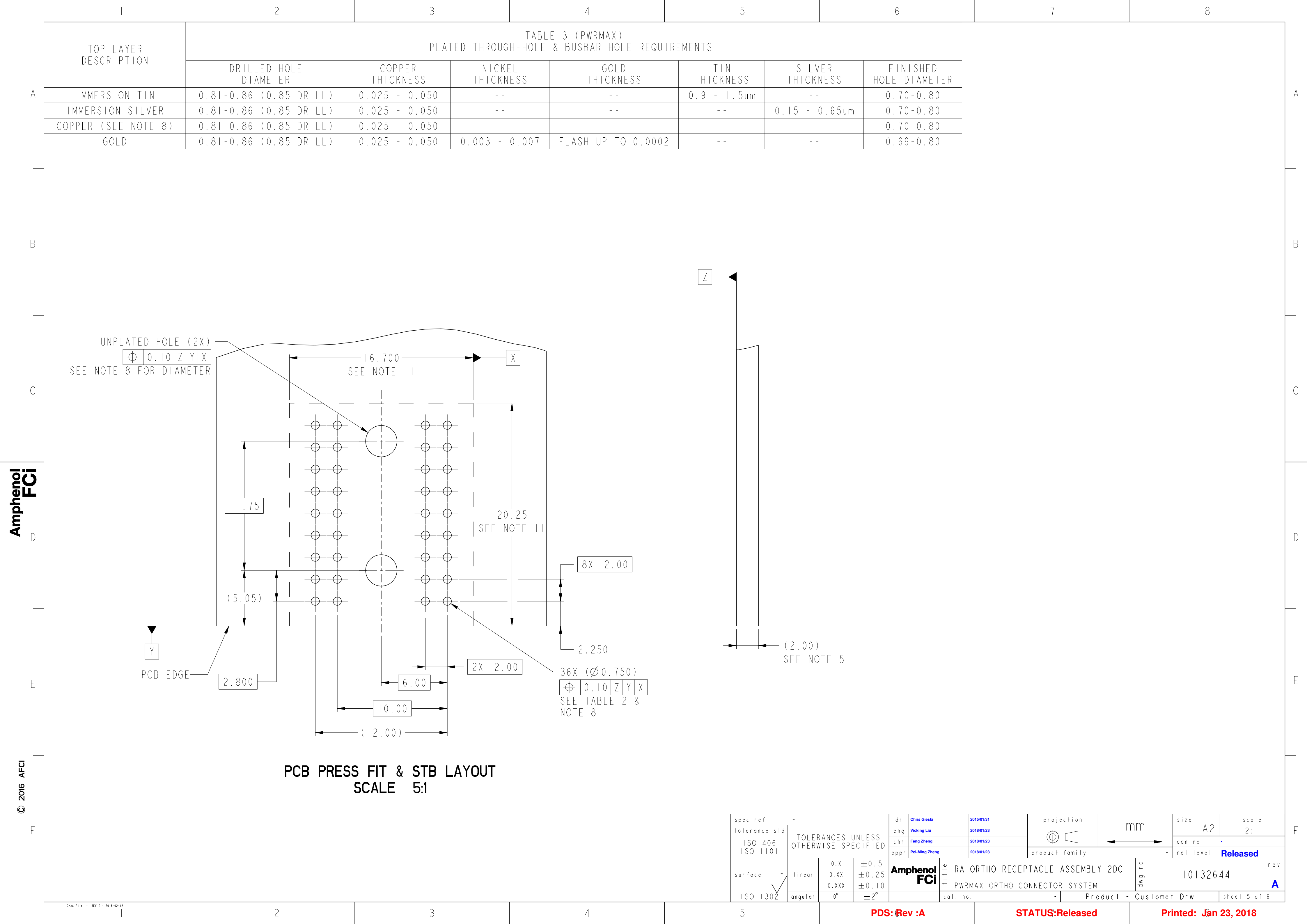


spec ref		-		dr		Chris Gieski		2015/01/31		projection		mm		size		A2		scale		1:1			
tolerance std		ISO 406		TOLERANCES UNLESS OTHERWISE SPECIFIED		eng		Vicking Liu		2018/01/23						ecn no		-		rel level		Released	
ISO 1101		chr				Feng Zheng		2018/01/23		appr												Pei-Ming Zheng	
surface		linear		Amphenol FCi		title		RA ORTHO RECEPTACLE ASSEMBLY 2DC PWRMAX ORTHO CONNECTOR SYSTEM		dwg no		10132644		rev		A							
																		0.X		±0.5			
																		0.XX		±0.25			
		0.XXX																±0.10					
ISO 1302		angular		0°		±2°		cat. no.		-		Product - Customer Drw		sheet 3 of 6									

PDS: Rev :A

STATUS:Released

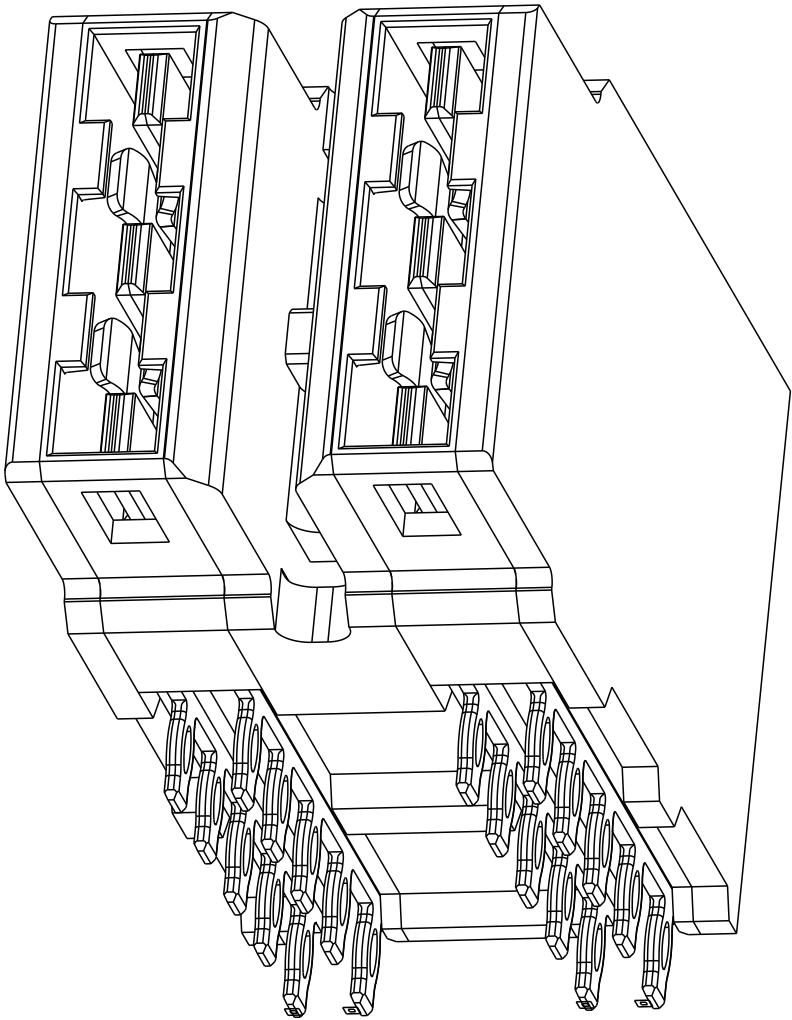
Printed: Jan 23, 2018



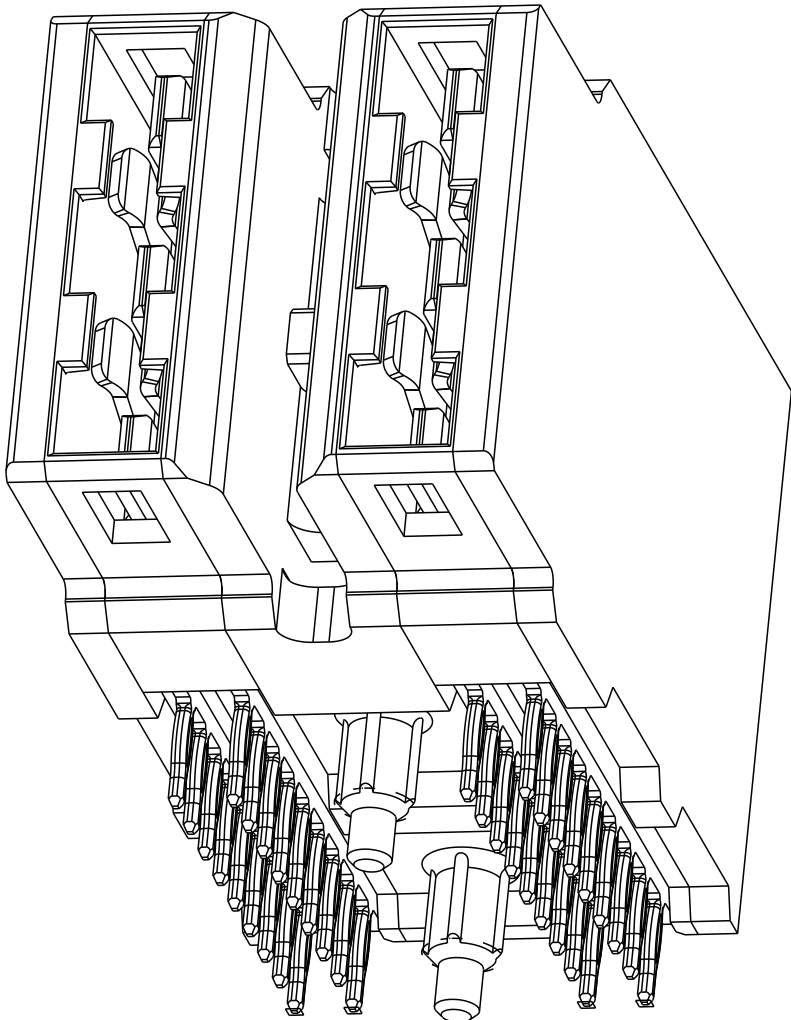
RA ORTHO RECEPTACLE ASSEMBLY 2DC			
PRODUCT NUMBER	PLATING TYPE	TOOLED	DESCRIPTION
10132644-001LF	GCS	NO	BUSBAR RA RECEPTACLE PRESS FIT OPTION
10132644-002LF	GCS	YES	PCB RA RECEPTACLE PRESS FIT OPTION
10132644-003LF	GCS	YES	PCB RA RECEPTACLE STB OPTION

NOTES:

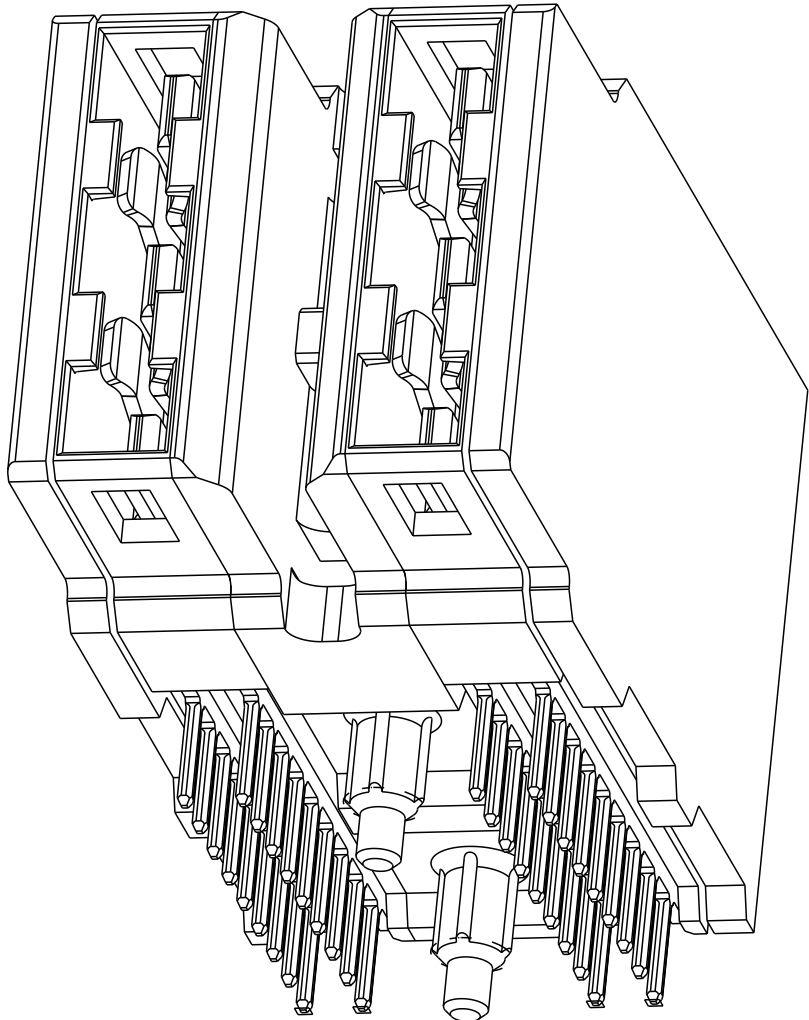
1. CONNECTOR MATERIALS:
HOUSING: HIGH TEMP THERMOPLASTIC, BLACK
UL94 V-0 COMPLIANT
CONTACTS: COPPER ALLOY
2. CONTACT FINISH: (REF. GS-12-1342 SECTION 5.2).
3. PRODUCT SPECIFICATION: GS-12-1342.
APPLICATION SPECIFICATION: GS-20-0452.
PACKAGING SPECIFICATION: GS-14-2479
4. PRODUCT MARKING (MANUFACTURER'S NAME, PRODUCT NUMBER AND DATE CODE) ON HOUSING IN AREA SHOWN.
5. MINIMAL NOMINAL BUSBAR & PCB THICKNESS: 1.60 mm
6. COPPER PLATING THICKNESS IN CENTER OF VIA-HOLE CAN BE NO MORE THAN 0.003 LESS THAN OTHER AREAS.
7. ALL HOLE SIZES ARE FINISHED HOLE SIZES UNLESS OTHERWISE NOTED.
8. PLASTIC PEG MOUNTING HOLES ARE UNPLATED.
Ø 2.85 ± 0.10 FOR PRESS-FIT TAILS
Ø 2.55 ± 0.10 FOR SOLDER TAILS
9. CONNOCTER KEEP OUT ZONE.





10132644-001
SCALE 4:1



10132644-002
SCALE 4:1



10132644-003
SCALE 4:1

spec ref -				dr Chris Gieski		2015/01/31		projection		mm		size A2		scale 4:1	
tolerance std		TOLERANCES UNLESS OTHERWISE SPECIFIED		eng Vicking Liu		2018/01/23						ecn no -		rel level Released	
ISO 406				chr Feng Zheng		2018/01/23									
ISO 1101				appr Pei-Ming Zheng		2018/01/23									
								product family		--					
surface		linear		Amphenol FCI		title		RA ORTHO RECEPTACLE ASSEMBLY 2DC PWRMAX ORTHO CONNECTOR SYSTEM		dwg no 10132644		rev A			
		0.X ±0.5													
		0.XX ±0.25													
		0.XXX ±0.10													
ISO 1302		angular 0° ±2°													
								cat. no. -		Product - Customer Drw				sheet 6 of 6	