



Chipsmall Limited consists of a professional team with an average of over 10 year of expertise in the distribution of electronic components. Based in Hongkong, we have already established firm and mutual-benefit business relationships with customers from,Europe,America and south Asia,supplying obsolete and hard-to-find components to meet their specific needs.

With the principle of “Quality Parts,Customers Priority,Honest Operation,and Considerate Service”,our business mainly focus on the distribution of electronic components. Line cards we deal with include Microchip,ALPS,ROHM,Xilinx,Pulse,ON,Everlight and Freescale. Main products comprise IC,Modules,Potentiometer,IC Socket,Relay,Connector.Our parts cover such applications as commercial,industrial, and automotives areas.

We are looking forward to setting up business relationship with you and hope to provide you with the best service and solution. Let us make a better world for our industry!



## Contact us

Tel: +86-755-8981 8866 Fax: +86-755-8427 6832

Email & Skype: [info@chipsmall.com](mailto:info@chipsmall.com) Web: [www.chipsmall.com](http://www.chipsmall.com)

Address: A1208, Overseas Decoration Building, #122 Zhenhua RD., Futian, Shenzhen, China



10144517- AA B C D E F F

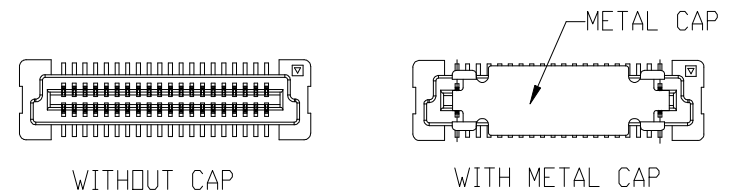
AA	POSITION
04	2X20
06	2X30
08	2X40
10	2X50

B	FOR PLUG, SEE DWG. NO. 10144518			
COMBINATION OF MATED HEIGHT	Plug 1	Plug 2	Plug 3	Plug 4
Recep 1				
Recep 2				
Recep 3				
Recep 4				

E	PACKAGING
2	T&R WITH METAL CAP
3	T&R WITHOUT CAP

D	POLARIZATION PEG	HOLD DOWN
0	YES	NO
2	NO	NO

C	PLATING ON CONTACT AREA	FF
8	GOLD FLASH ON CONTACT AREA; PURE TIN 2.5um MIN (LEAD FREE) ON SOLDER TAIL NICKEL UNDERPLATE OVERALL 1.27um MIN	LF

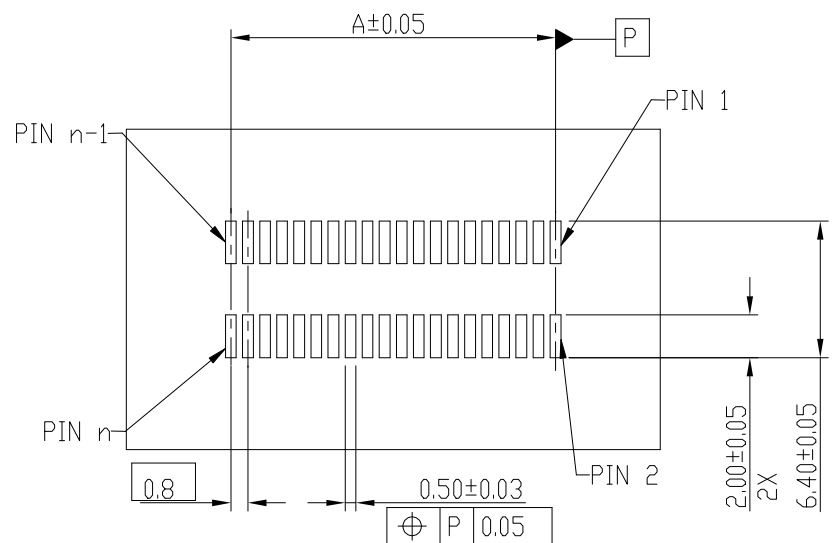


NOTE:

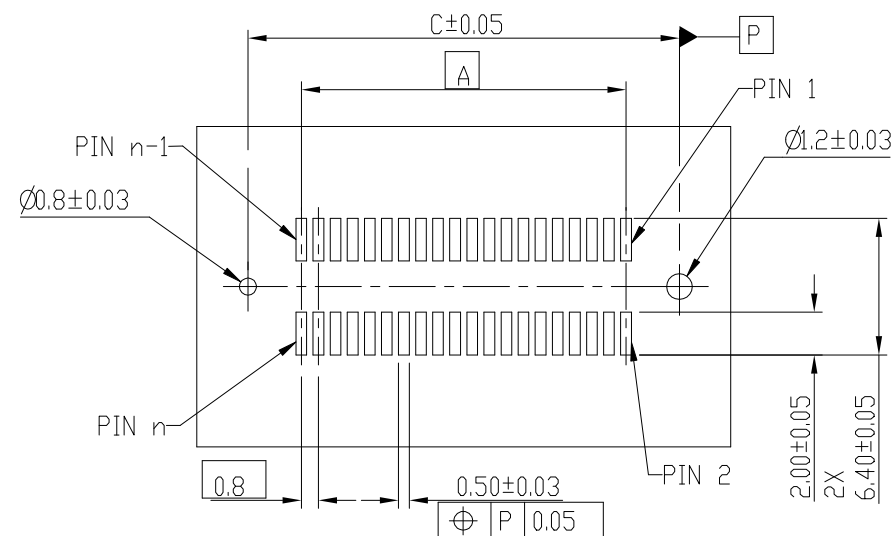
1. MATERIAL:  
HOUSING: G.F. LCP, NATURAL, UL94-V0  
TERMINAL: COPPER ALLOY
2. PLATING: AS SHOWN IN TABLE.
3. SEE GS-12-1424 FOR PRODUCT SPEC.
4. THIS PRODUCT MEETS THE EUROPEAN UNION DIRECTIVES AND OTHER COUNTRY REGULATIONS AS DESCRIBED IN GS-22-008.
5. THE HOUSING WILL WITHSTAND EXPOSURE UP TO 260~ PEAK TEMPERATURE FOR 30 SECONDS IN A CONVECTION, INFRA-RED OR VAPOR PHASE REFLOW OVEN.

mat'l. code				surface		tolerance		projection		product family					
				ISO 1302 ✓		ISO 406 ISO 1101				BERGSTAK					
ltr		ecn no		dr		date		tolerances unless otherwise specified		title					
A				Bob		07/25/17				RECEPTACLE ASSY					
										BERGSTAK 0.8MM					
								scale 1:1							
										dwg no		sheet 1 of 7		size	
												10144517		A3	





RECOMMENDED PCB LAYOUT WITHOUT PEGS AND HOLDDOWN



RECOMMENDED PCB LAYOUT WITH PEGS  
FOR NO. OF POSITION 2X20, 2X30, 2X40, 2X50,

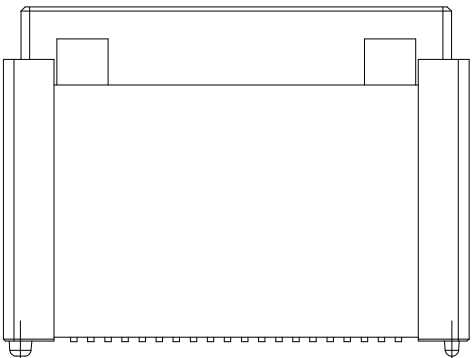
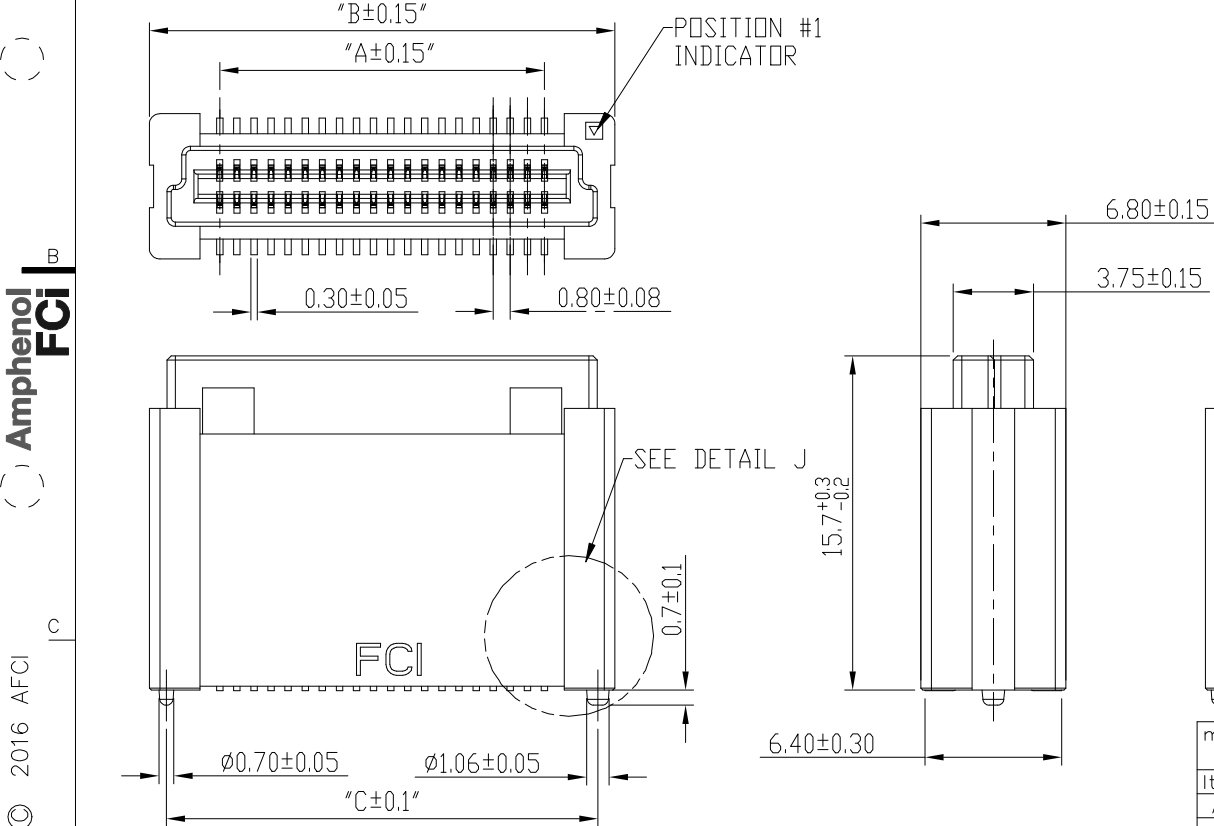
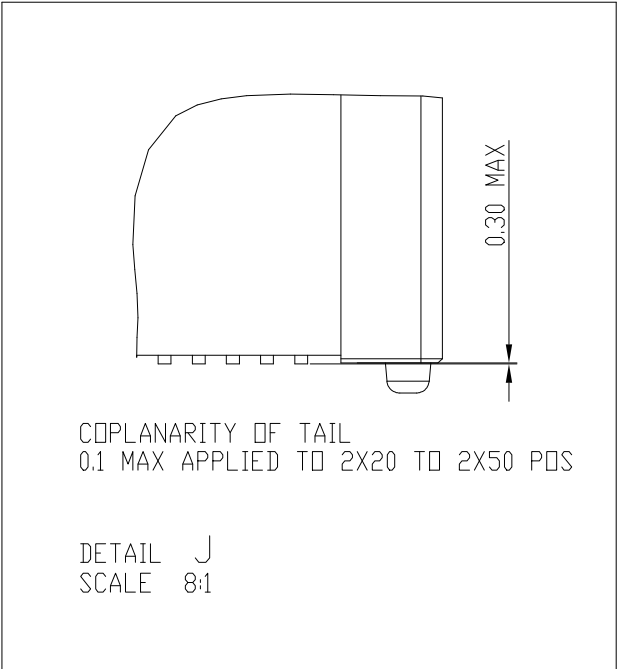
RECEPTACLE 1

[illegible]






PRODUCT NO.	NUMBER OF POSITIONS	DIMENSION		
		A	B	C
10144517-044***	2X20	15.2	21.8	20.2
10144517-064***	2X30	23.2	29.8	28.2
10144517-084***	2X40	31.2	37.8	36.2
10144517-104***	2X50	39.2	45.8	44.2



RECEPTACLE 4

mat'l. code				surface		ISO 1302	✓	tolerance		ISO 406	ISO 1101	projection		product family									
														BERGSTAK									
ltr		ecn		no		dr		date		tolerances unless otherwise specified				title									
A										angles		linear		.0±.2		RECEPTACLE ASSY BERGSTAK 0.8MM							
														.00±.15									
										X±2°				.000±.10									
														mm		scale 1:1							
										dr		Bob Gu		07/05/17		<b>Amphenol</b> <b>FCI</b>							
										engr		Bob Gu		07/25/17									
										chr		LQ Lei		07/25/17									
										appd		Tim Yao		07/25/17									
sheet index		revision		A														dwg no		sheet6 of 7		size	
		sheet		1~7														10144517				A3	
																		type		Product		Customer Drawing	

Printed: Aug 03, 2017