



Chipsmall Limited consists of a professional team with an average of over 10 year of expertise in the distribution of electronic components. Based in Hongkong, we have already established firm and mutual-benefit business relationships with customers from,Europe,America and south Asia,supplying obsolete and hard-to-find components to meet their specific needs.

With the principle of “Quality Parts,Customers Priority,Honest Operation,and Considerate Service”,our business mainly focus on the distribution of electronic components. Line cards we deal with include Microchip,ALPS,ROHM,Xilinx,Pulse,ON,Everlight and Freescale. Main products comprise IC,Modules,Potentiometer,IC Socket,Relay,Connector.Our parts cover such applications as commercial,industrial, and automotives areas.

We are looking forward to setting up business relationship with you and hope to provide you with the best service and solution. Let us make a better world for our industry!



## Contact us

Tel: +86-755-8981 8866 Fax: +86-755-8427 6832

Email & Skype: info@chipsmall.com Web: www.chipsmall.com

Address: A1208, Overseas Decoration Building, #122 Zhenhua RD., Futian, Shenzhen, China



# 101F

## MINIATURE EPOXY POTTED AUDIO TRANSFORMER

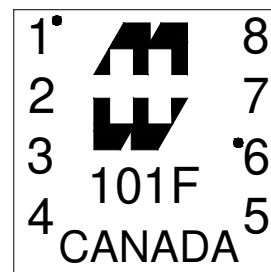
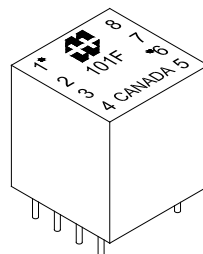
Pin type, P.C. board mount, net weight of only 0.1 oz.  
 Rugged black epoxy potted construction produces a completely sealed unit withstanding severe environmental conditions.  
 Secondary may be used as primary and primary as secondary.  
 Power level: 100mw @ 300 Hz. to 100 KHz.

-Freq. range @ +10 dbm is 200 Hz. to 100 KHz. +/- 0.5db

-Freq. range @ +15 dbm is 200 Hz. to 100 KHz. +/- 0.5db

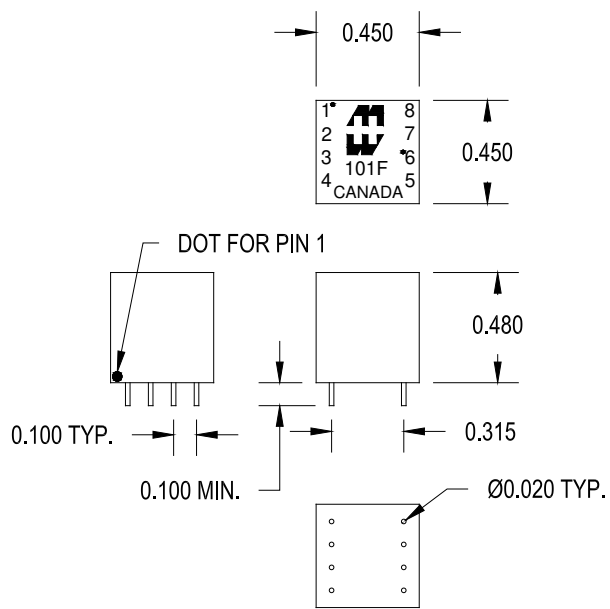
-Freq. range @ +20 dbm is 300 Hz. to 100 KHz. +/- 0.5db

-Freq. measurements with no D.C. saturation.

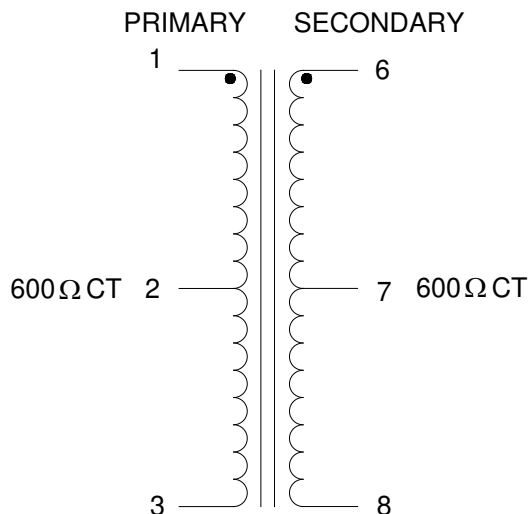


### ELECTRICAL SPECIFICATIONS

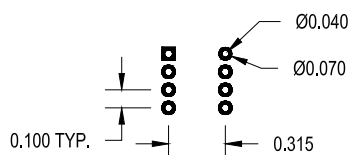
Characteristic	Typical
Input Impedance	600 $\Omega$ CT
Output Impedance	600 $\Omega$ CT
Output Power	0.100 Watts
DCR	
Primary 1-3	44 $\Omega$ (22 $\Omega$ /22 $\Omega$ )
Secondary 6-8	52 $\Omega$ (26 $\Omega$ /26 $\Omega$ )
Inductance	@ 1.0 kHz, 1.0 V OC
Primary	288 mH
Secondary	288 mH
Leakage Inductance	0.40 mH
Impedance	@ 1.0 kHz, 1.0 V OC
Primary	2.86 K $\Omega$
Secondary	2.86 K $\Omega$
Frequency Response	$\pm 0.5$ db from 200Hz to 100KHz
Turns ratio	1:1
Dielectric Strength	100 Vrms
No Connection	Pins 4 & 5
Storage Temp	-40 To 105°C**
Operating Temp	-40 To 85°C**



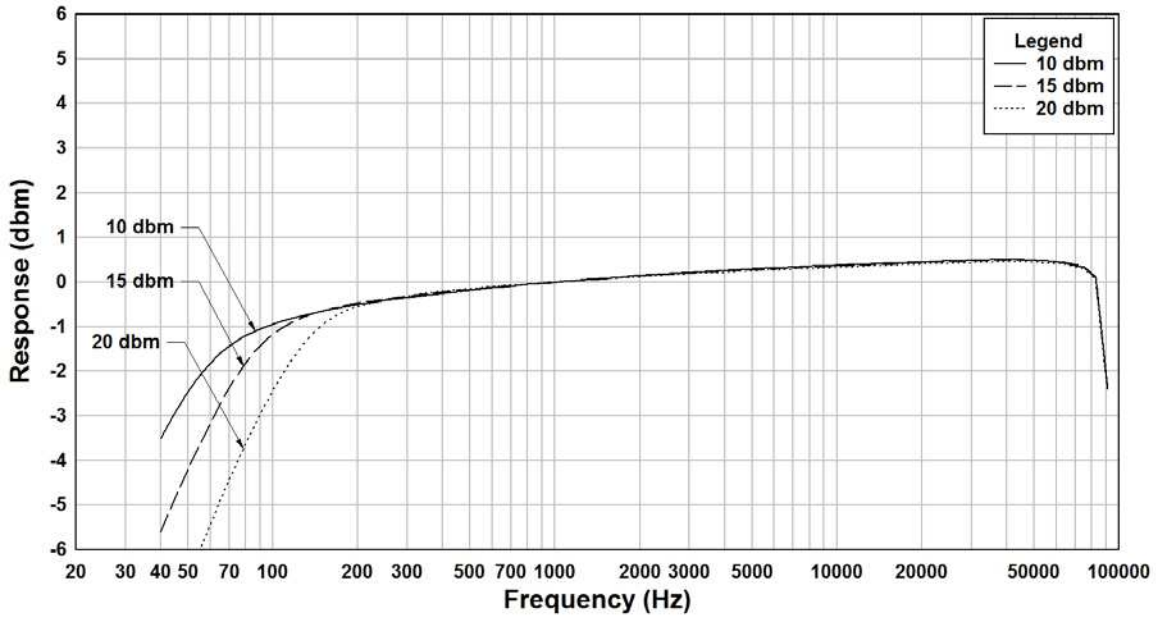
### SCHEMATIC DIAGRAM



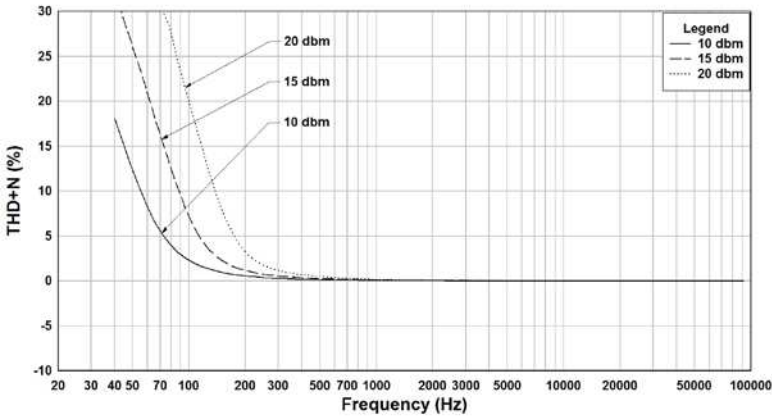
### PCB LAYOUT



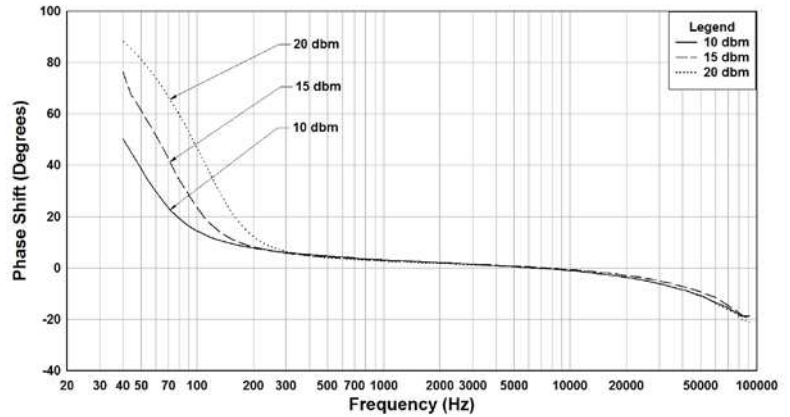
## 101F Frequency Response



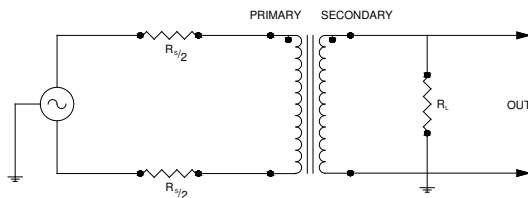
## 101F THD+N



## 101F Phase shift



## TYPICAL TEST CIRCUIT



Measurement instruments  
 Hp4192a impedance analyzer  
 Hp3456a DVM  
 Keithley 2002 DVM  
 D scope series iii audio analyzer

\*\* The epoxy that is used to cast these parts has a workable temperature range of  $-40^{\circ}\text{C}$  to  $+105^{\circ}\text{C}$  Under a normal rate of change, this does not include thermal shock. Variations in the transformer materials and environmental conditions may reduce the workable temperature range.

This drawing and the information in it is the property of Hammond Manufacturing. It may not be reproduced, transmitted or used in any manner whatsoever without the written permission of Hammond Manufacturing. Data subject to change without notice.