



Chipsmall Limited consists of a professional team with an average of over 10 year of expertise in the distribution of electronic components. Based in Hongkong, we have already established firm and mutual-benefit business relationships with customers from,Europe,America and south Asia,supplying obsolete and hard-to-find components to meet their specific needs.

With the principle of “Quality Parts,Customers Priority,Honest Operation,and Considerate Service”,our business mainly focus on the distribution of electronic components. Line cards we deal with include Microchip,ALPS,ROHM,Xilinx,Pulse,ON,Everlight and Freescale. Main products comprise IC,Modules,Potentiometer,IC Socket,Relay,Connector.Our parts cover such applications as commercial,industrial, and automotives areas.

We are looking forward to setting up business relationship with you and hope to provide you with the best service and solution. Let us make a better world for our industry!



Contact us

Tel: +86-755-8981 8866 Fax: +86-755-8427 6832

Email & Skype: info@chipsmall.com Web: www.chipsmall.com

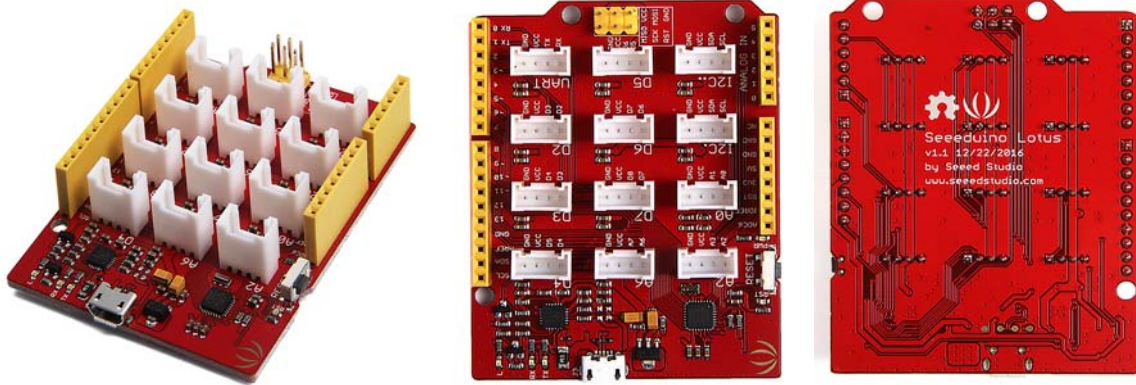
Address: A1208, Overseas Decoration Building, #122 Zhenhua RD., Futian, Shenzhen, China





Seeeduino Lotus V1.1 - ATmega328 Board with Grove Interface

SKU 102010168



Description

If you have experience using Seeed's Seeeduino board plus a base shield, you would know how easy it is because there is no jumper wire and soldering. In order to make it more convenient, we created the Seeeduino Lotus V1.0, a 2 in 1 solution of Seeeduino board and base shield. It turns out Seeeduino Lotus V1.0 is very welcome because it combines the advantages of Seeeduino board and base shield and also very cost effective. This time we'd like to introduce the new version, Seeeduino Lotus V1.1 to you.

Seeeduino Lotus V1.1 is a small update of the V1.0 version, we only changed the USB bus converter chip CH340 to CP2102N in order to make this board more compatible with Mac OS. Despite this change, the board is still based on ATMEGA328P-MU, a high performance, low power 8-Bit AVR Microcontroller. It is still Arduino compatible and has rich peripherals including digital interface, analog interface, I2C, SPI, UART.

The update of hardware might be small, while the reduction of price is huge. Even though the hardware is almost the same to the V1.0 version, the price of Seeeduino Lotus V1.1 is almost half of the V1.0. We have made a lot of cost down work to make this progress. The result is that you will have better experience and save more money. No matter you are using Windows or Mac OS, if want to build something based on Arduino quickly and conveniently, this board is the best for you.

Features

- Combination of Seeeduino and base shield.
- Arduino UNO Compatible
- On-board Grove connector
- Mac OS compatible.
- Cost effective

Documents

Please visit our wiki page for more info about this product. It will be appreciated if you can help us improve the documents, add more demo code or tutorials. For technical support, please post your questions to our forum.

Technical Details

Weight	G.W 21g
--------	---------

Battery	Exclude
Microcontroller	ATmega328P-MU
Operating Voltage	5V
DC Current per I/O Pin	40 mA
Flash Memory	32 KB (ATmega328P-MU)
RAM	2 KB (ATmega328P-MU)
EEPROM	1 KB (ATmega328P-MU)
Clock Speed	16 MHz

Digital Interface	D2,D3,D4,D5,D6,D7
Analog Interface	A0,A2,A4,A6
Other	I2C *2, SPI, UART

Part List

Seeeduino Lotus V1.1	1
----------------------	---

