



Chipsmall Limited consists of a professional team with an average of over 10 year of expertise in the distribution of electronic components. Based in Hongkong, we have already established firm and mutual-benefit business relationships with customers from,Europe,America and south Asia,supplying obsolete and hard-to-find components to meet their specific needs.

With the principle of “Quality Parts,Customers Priority,Honest Operation,and Considerate Service”,our business mainly focus on the distribution of electronic components. Line cards we deal with include Microchip,ALPS,ROHM,Xilinx,Pulse,ON,Everlight and Freescale. Main products comprise IC,Modules,Potentiometer,IC Socket,Relay,Connector.Our parts cover such applications as commercial,industrial, and automotives areas.

We are looking forward to setting up business relationship with you and hope to provide you with the best service and solution. Let us make a better world for our industry!



Contact us

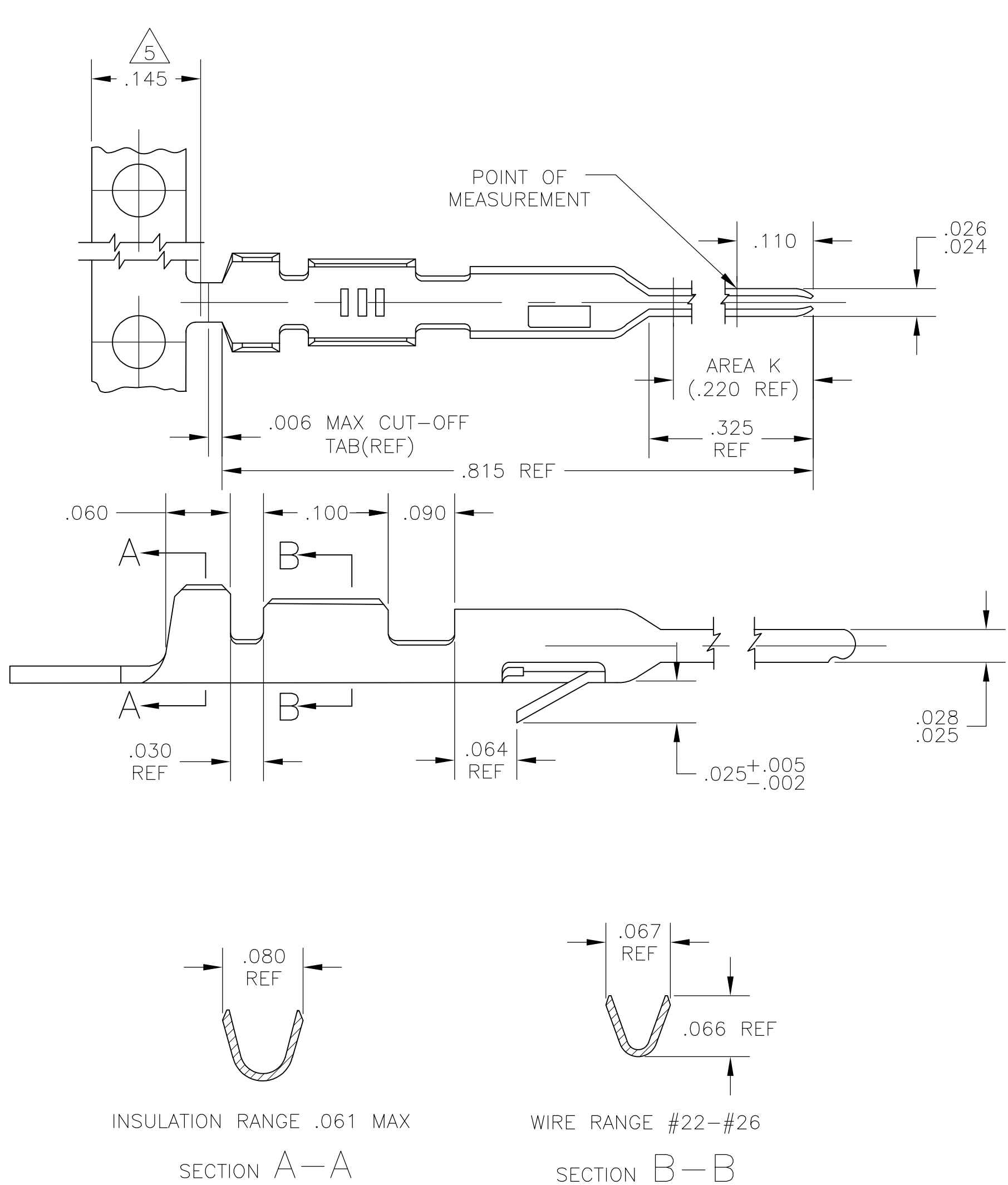
Tel: +86-755-8981 8866 Fax: +86-755-8427 6832

Email & Skype: info@chipsmall.com Web: www.chipsmall.com

Address: A1208, Overseas Decoration Building, #122 Zhenhua RD., Futian, Shenzhen, China



LOC	DIST	REVISIONS					
		P	LTR	DESCRIPTION	DATE	DWN	APVD
AD	00		D1	REVISED PER ECO-11-004917	11MAR11	RK	HMR



- 1 .000015 ON AREA K, GOLD FLASH ON REMAINDER , OVER .000050 NICKEL.
- 2 .000030 GOLD ON AREA K, GOLD FLASH ON REMAINDER , OVER .000050 NICKEL.
- 3 .000100 TO .000200 BRIGHT TIN OVER .000030 MIN NICKEL ENTIRE CONTACT.
4. USE HAND TOOL 90340-1 FOR CRIMPING LOOSE PIECE CONTACTS.
- 5 GOLD PLATING NOT REQUIRED IN THIS AREA(GOLD PLATED PART ONLY).
- 6 .000100 TO .000200 MATTE TIN OVER .000030 MIN NICKEL ENTIRE CONTACT.

5-102107-3	6	5-102095-4
102107-3	3	102095-4
102107-2	2	102095-3
102107-1	1	102095-2
LOOSE PIECE PART NO.	FINISH	PART NO.

THIS DRAWING IS A CONTROLLED DOCUMENT.		DWN	3-31-78	TE Connectivity			
		CHK	4-10-78				
		APVD	4-14-78	NAME			
DIMENSIONS: INCHES		TOLERANCES UNLESS OTHERWISE SPECIFIED:		CONTACT, MOD IV, PIN FOR 22-26 AWG			
		0 PLC ± -		SIZE			
		1 PLC ± -		CAGE CODE			
		2 PLC ± -		DRAWING NO			
		3 PLC ± .005		RESTRICTED TO			
		4 PLC ± -		A2 00779 C=102095			
		ANGLES ± -		SCALE 10:1			
MATERIAL		FINISH		SHEET 1 of 1			
PHOS. BRONZE		SEE TABLE		REV D1			
				CUSTOMER DRAWING			