



Chipsmall Limited consists of a professional team with an average of over 10 year of expertise in the distribution of electronic components. Based in Hongkong, we have already established firm and mutual-benefit business relationships with customers from,Europe,America and south Asia,supplying obsolete and hard-to-find components to meet their specific needs.

With the principle of “Quality Parts,Customers Priority,Honest Operation,and Considerate Service”,our business mainly focus on the distribution of electronic components. Line cards we deal with include Microchip,ALPS,ROHM,Xilinx,Pulse,ON,Everlight and Freescale. Main products comprise IC,Modules,Potentiometer,IC Socket,Relay,Connector.Our parts cover such applications as commercial,industrial, and automotives areas.

We are looking forward to setting up business relationship with you and hope to provide you with the best service and solution. Let us make a better world for our industry!



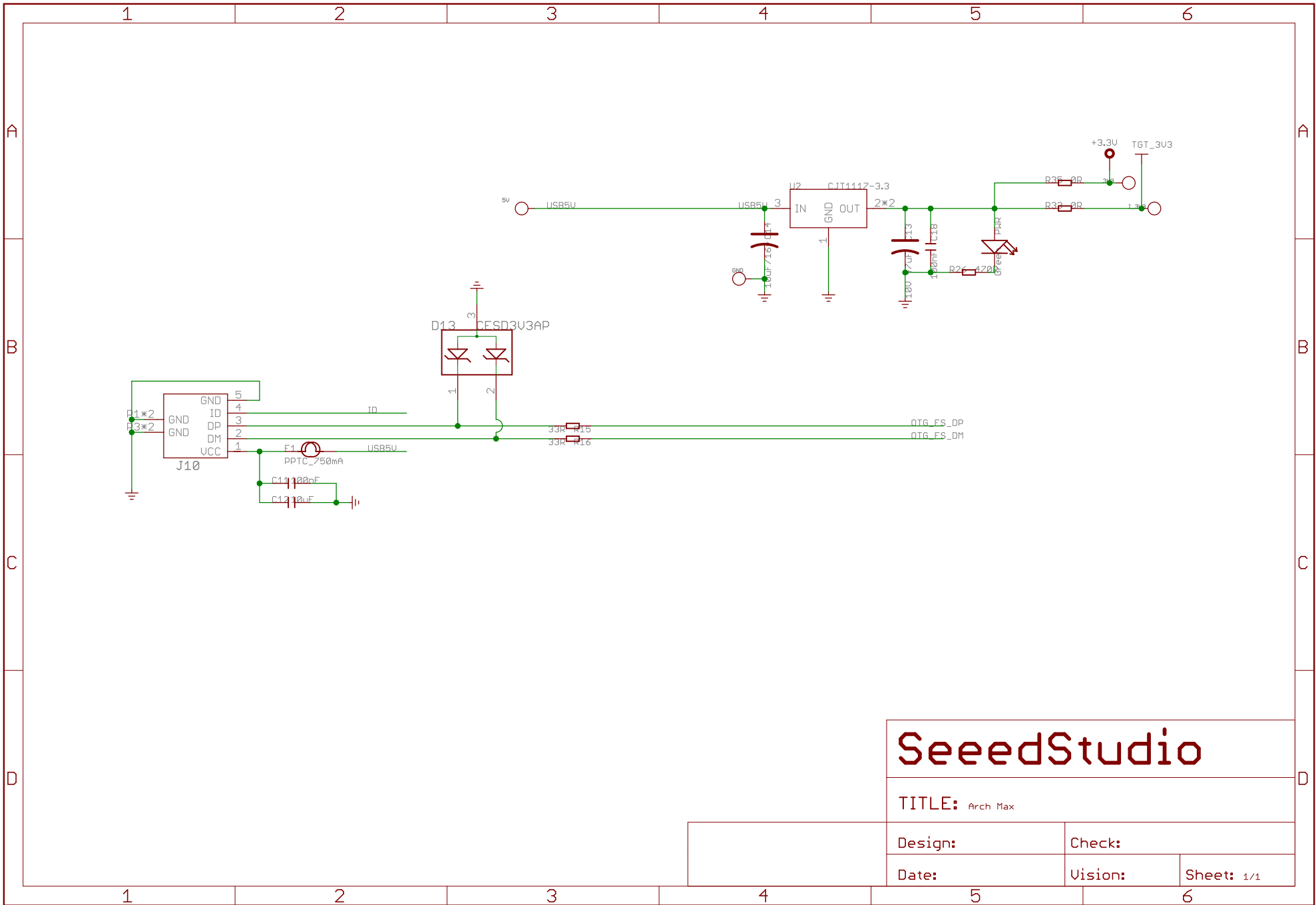
Contact us

Tel: +86-755-8981 8866 Fax: +86-755-8427 6832

Email & Skype: info@chipsmall.com Web: www.chipsmall.com

Address: A1208, Overseas Decoration Building, #122 Zhenhua RD., Futian, Shenzhen, China

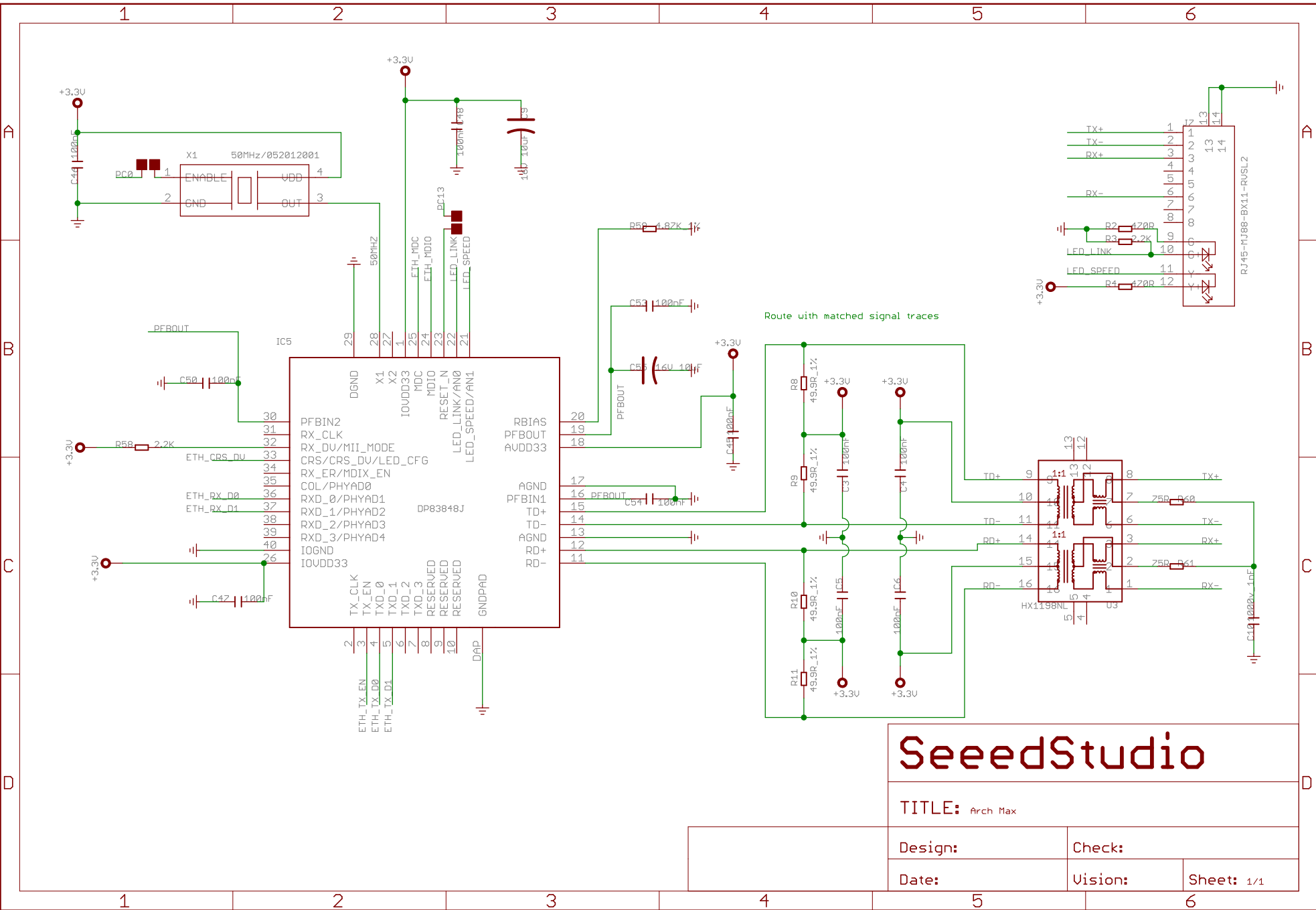




SeeedStudio

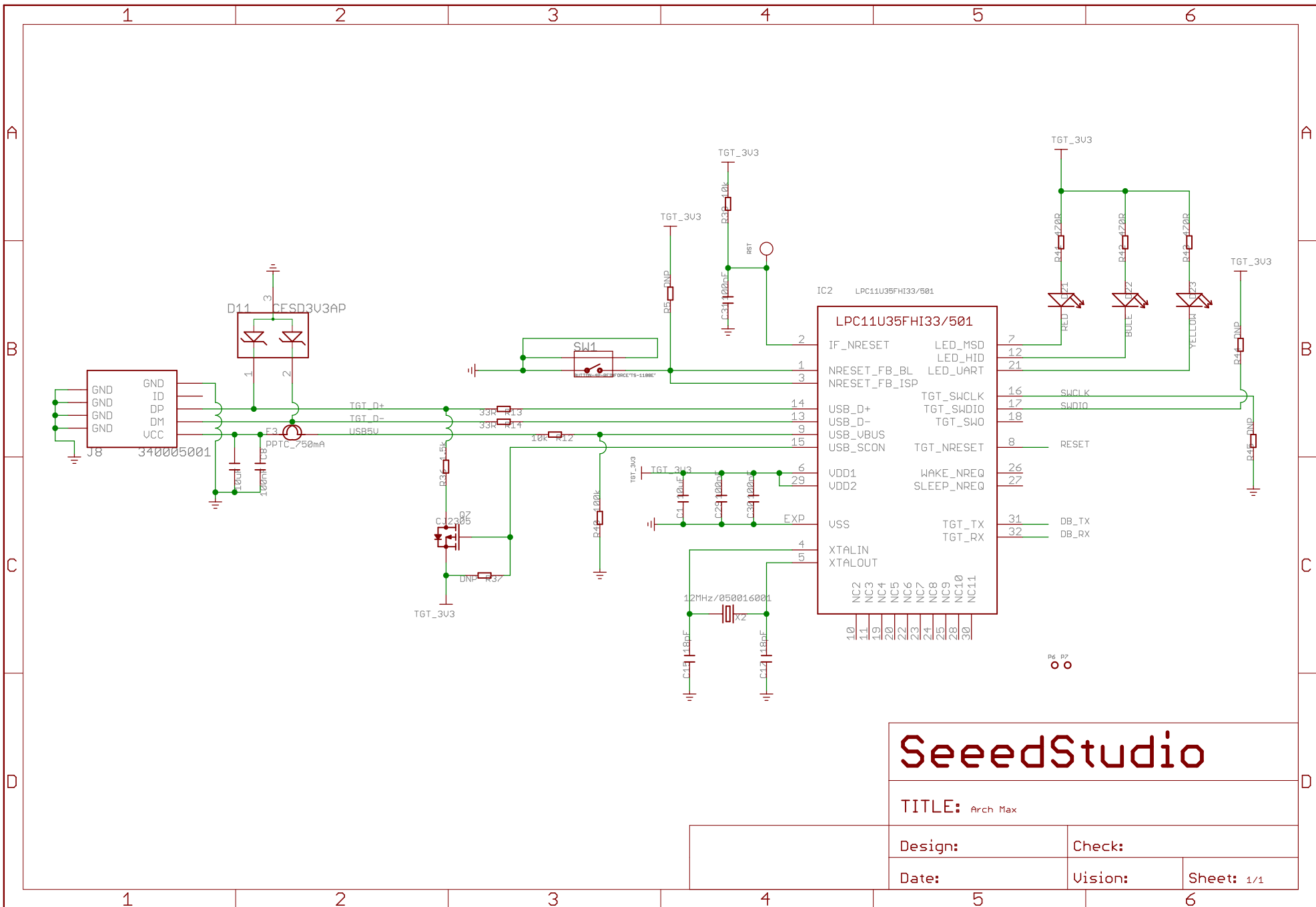
TITLE: Arch Max

Design:	Check:
Date:	Vision:
Sheet: 1/1	

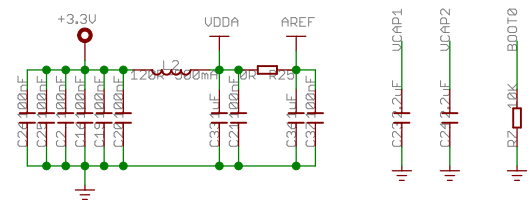
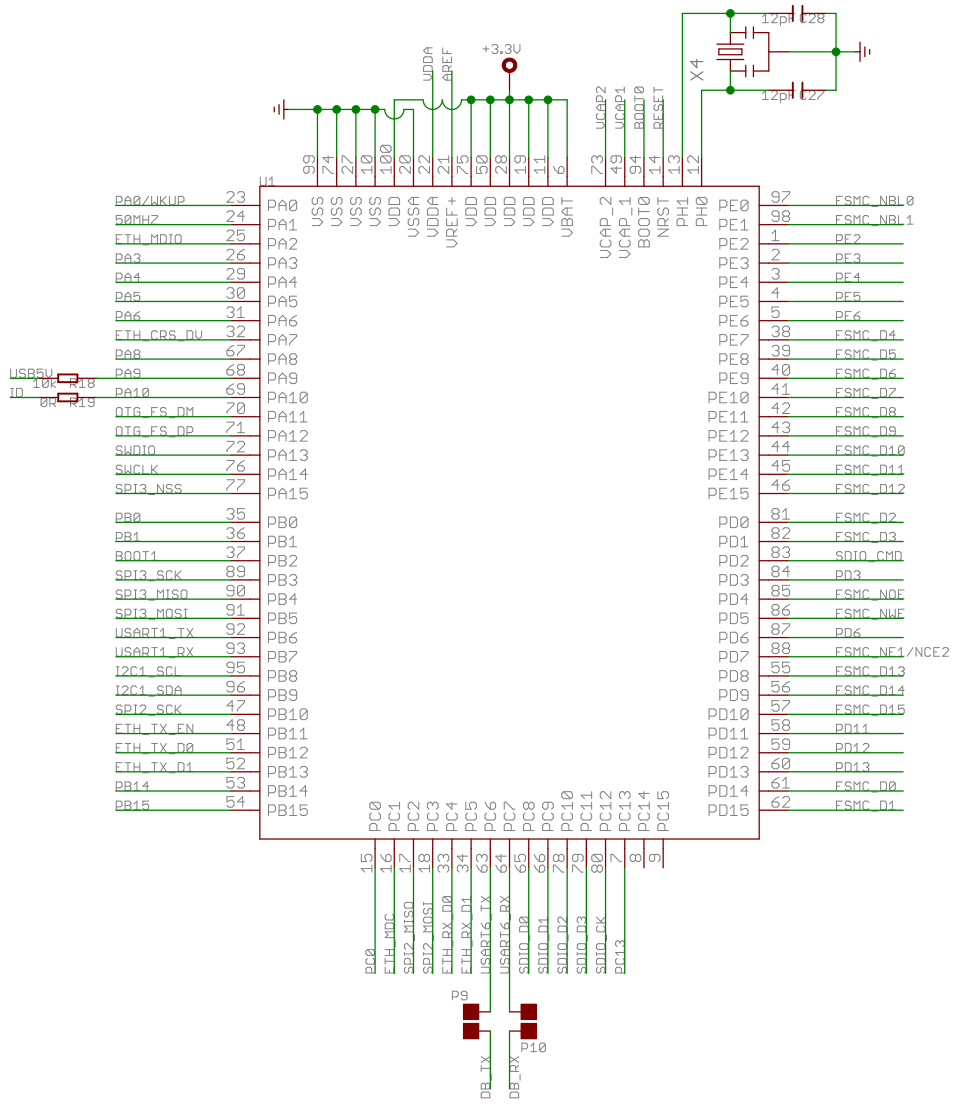


SeeedStudio

TITLE: Arch Max		
Design:	Check:	
Date:	Vision:	Sheet: 1/1



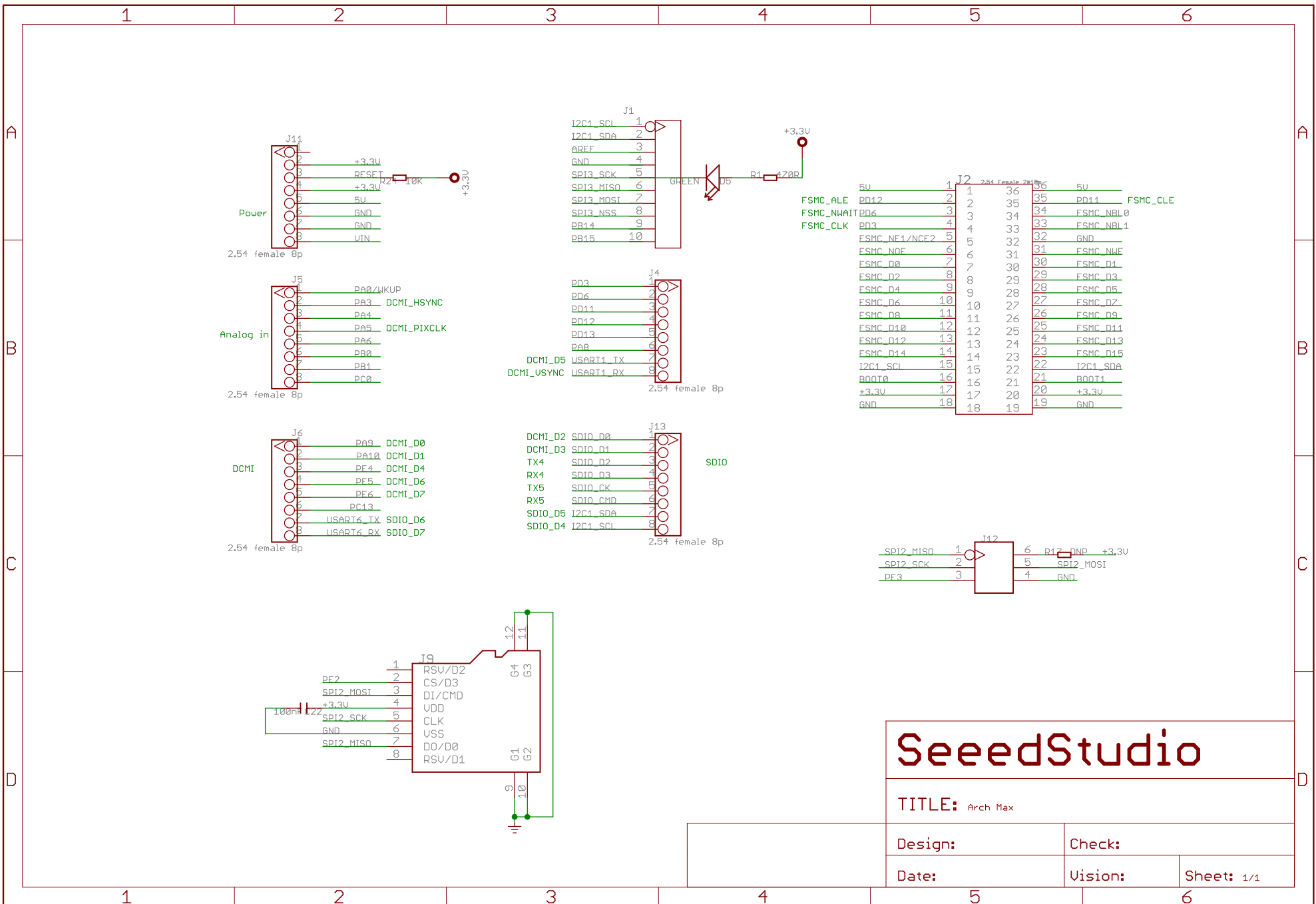
<h1>SeeedStudio</h1>		
TITLE: Arch Max		
Design:	Check:	
Date:	Vision:	Sheet: 1/1



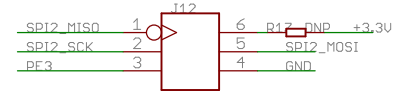
SeeedStudio

TITLE: Arch Max

Design:	Check:
Date:	Vision:
Sheet: 1/1	



5V	1	36	5V
FSMC_ALE	2	35	PD11
FSMC_NWAIT	3	34	FSMC_NBL0
FSMC_CLK	4	33	FSMC_NBL1
FSMC_NE1/NCF2	5	32	GND
FSMC_NOF	6	31	FSMC_NWE
FSMC_D0	7	30	FSMC_D3
FSMC_D2	8	29	FSMC_D5
FSMC_D4	9	28	FSMC_D7
FSMC_D6	10	27	FSMC_D9
FSMC_D8	11	26	FSMC_D11
FSMC_D10	12	25	FSMC_D13
FSMC_D12	13	24	FSMC_D15
FSMC_D14	14	23	I2C1_SCI
I2C1_SCI	15	22	I2C1_SDA
BOOT0	16	21	BOOT1
+3.3V	17	20	+3.3V
GND	18	19	GND



SeeedStudio

TITLE: Arch Max		
Design:	Check:	
Date:	Vision:	Sheet: 1/1