



Chipsmall Limited consists of a professional team with an average of over 10 year of expertise in the distribution of electronic components. Based in Hongkong, we have already established firm and mutual-benefit business relationships with customers from,Europe,America and south Asia,supplying obsolete and hard-to-find components to meet their specific needs.

With the principle of “Quality Parts,Customers Priority,Honest Operation,and Considerate Service”,our business mainly focus on the distribution of electronic components. Line cards we deal with include Microchip,ALPS,ROHM,Xilinx,Pulse,ON,Everlight and Freescale. Main products comprise IC,Modules,Potentiometer,IC Socket,Relay,Connector.Our parts cover such applications as commercial,industrial, and automotives areas.

We are looking forward to setting up business relationship with you and hope to provide you with the best service and solution. Let us make a better world for our industry!



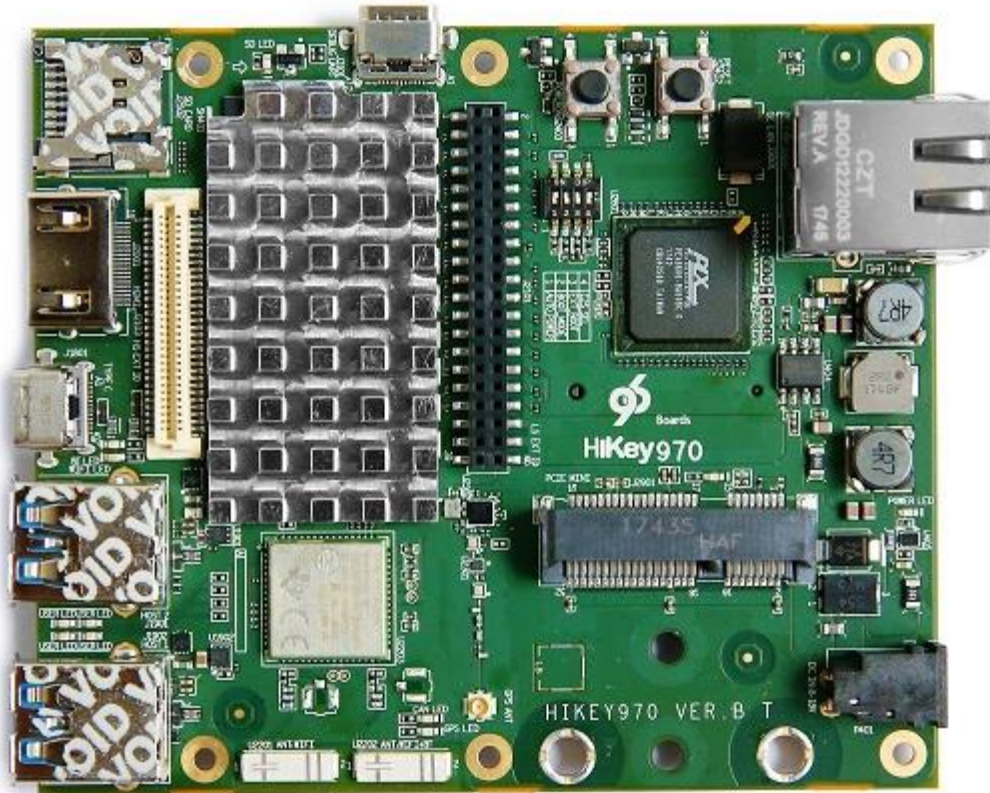
Contact us

Tel: +86-755-8981 8866 Fax: +86-755-8427 6832

Email & Skype: info@chipsmall.com Web: www.chipsmall.com

Address: A1208, Overseas Decoration Building, #122 Zhenhua RD., Futian, Shenzhen, China



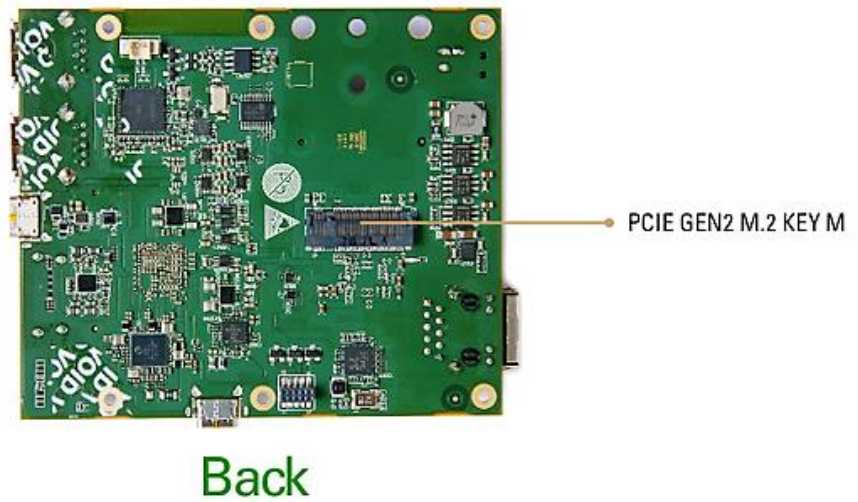
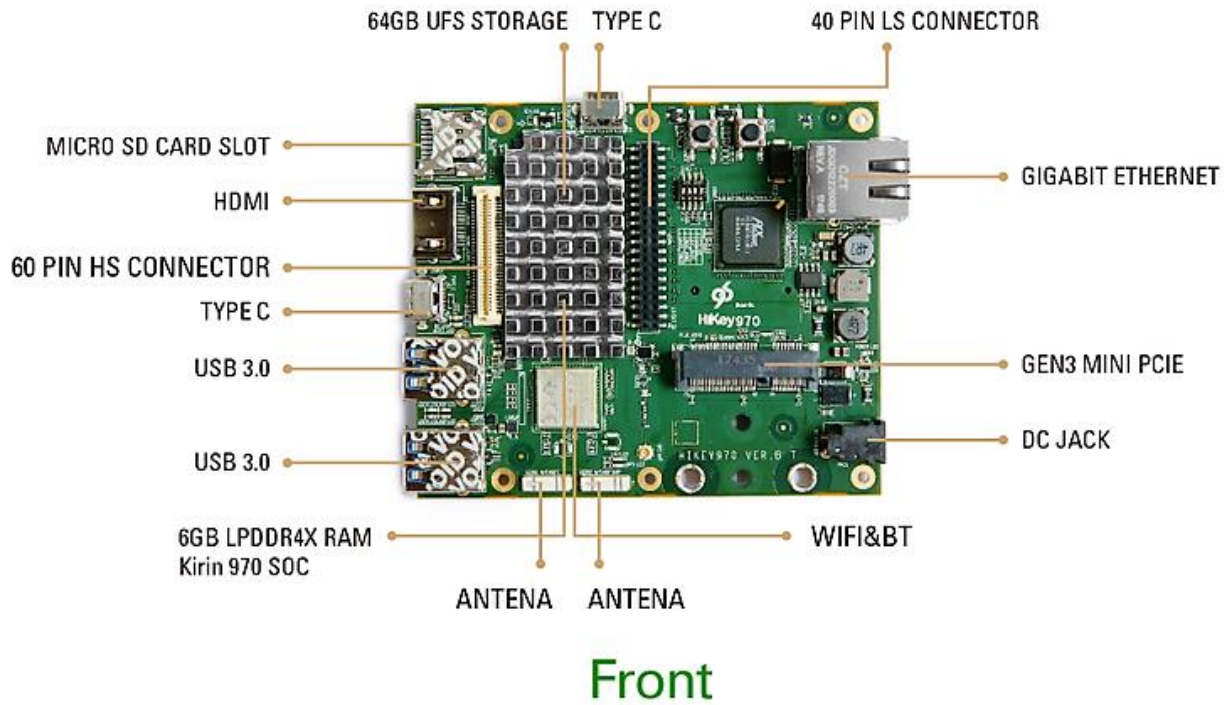


HiKey 970 Development Board

SKU 102110139

What is Hikey 970

Hikey970 is Super Edge AI Computing Platform Powered by Kirin970 SOC with 4 x Cortex A73,4 x Cortex A53. Hikey970 has 6GB LPDDR4 RAM, 64GB UFS storage, Gigabit Ethernet, GPS,PCIE Gen3 and CAN on board. As world's first dedicated NPU AI platform, Hikey970 integrates Huawei HiAI computing architecture and popular neural network frameworks which supports CPU, GPU AI and Neural Processing Unit dedicated to AI acceleration. Also It also comes with Huawei's HiAI SDK. Hikey 970 can be used in most application in build Deep Learning, Robots, Automobile and Smart City.



Technical Details

Dimensions	100mm x 85mm x 10mm
Weight	G.W 150g

Battery	Exclude
Hardware Specification of HiKey 970	
SoC	Kirin 970 SoC
CPU	4 x Cortex A73 @ 2.36GHz, 4 x Cortex A53 @ 1.8GHz
GPU	Mali G72-MP12
RAM	6GB LPDDR4
Features	
Storage	64GB UFS storage; micro SD card slot; PCIE Gen3 on M.2 M Key connector
Ethernet	1x1000Mbps LAN Por
Wireless	WiFi(2.4 -and 5-GHz dual band with two antennas); Bluetooth 4.1; GPS, Glonass, BeiDou
USB	2x USB 3.0 Type A(Host only); 1x USB 2.0 Type-C (OTG); 1xUSB 2.0 (Host only)
Display	1xHDMI1.4 (Type A-full); 1x4L-MIPIDSI; HDMI out up to FHD 1080
Video	MPEG2@80Mbps, MPEG4@50Mbps, H264@240Mbps, H265@160Mbps, VP8@100Mbps, VP9@120Mbps
Audio	HDMI output
Camera	1x4 lanes CSI ; 1x2 lanes CSI

Expansion Interface	40-pin 96Boards low-speed expansion header:+1.8V, +5V, DC power, GND, 2UART, 2I2C,SPI,I2S,12*GPIO
Expansion Interface	60-pin 96Boards high-speed expansion header: 4L-MIPI DSI, I2C x2, SPI(48M),USB 2.0, 2L +4LMIPI CSI
AI	Dedicated Neural-network Processing Unit (NPU)
CAN	Implements CAN V2.0B at 1Mb/s: 0-8 byter length in the data field; Standard and extended data and remote frames
CAN	Receive buffers, masks and filters:Two receive buffers with prioritized message storage; Six 29-bit filters; Two 29-bit masks
LED	1 x WiFi activity LED; 1 x BT activity LED; 4 x User LEDs
Power Source	Recommend a 12V@2A adaptor with a DC pulg which has a 4.75mm outer diameter and 1.7mm center pin with standard center -positive(EIAJ-3 Compliant)
OS Support	AOSP

Part List

HiKey970 board	1
----------------	---

