



Chipsmall Limited consists of a professional team with an average of over 10 year of expertise in the distribution of electronic components. Based in Hongkong, we have already established firm and mutual-benefit business relationships with customers from,Europe,America and south Asia,supplying obsolete and hard-to-find components to meet their specific needs.

With the principle of “Quality Parts,Customers Priority,Honest Operation,and Considerate Service”,our business mainly focus on the distribution of electronic components. Line cards we deal with include Microchip,ALPS,ROHM,Xilinx,Pulse,ON,Everlight and Freescale. Main products comprise IC,Modules,Potentiometer,IC Socket,Relay,Connector.Our parts cover such applications as commercial,industrial, and automotives areas.

We are looking forward to setting up business relationship with you and hope to provide you with the best service and solution. Let us make a better world for our industry!



Contact us

Tel: +86-755-8981 8866 Fax: +86-755-8427 6832

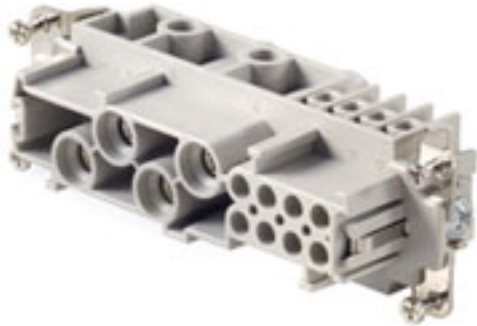
Email & Skype: info@chipsmall.com Web: www.chipsmall.com

Address: A1208, Overseas Decoration Building, #122 Zhenhua RD., Futian, Shenzhen, China



**HDC insert
HDC S4/8 FS**

Weidmüller Interface GmbH & Co. KG
Klingenbergstraße 16
D-32758 Detmold
Germany
Fon: +49 5231 14-0
Fax: +49 5231 14-292083
www.weidmueller.com



The MixMate series of connectors can simultaneously transmit high rated currents and voltages as well as signals.

The wire connection level is designed as a screw element. All screw connections are equipped with a wire protection spring.>br> Screw connection

General ordering data

Order No.	1023250000
Type	HDC S4/8 FS
Version	HDC insert, Female, 400 V, 80 A, No. of poles: 12, Screw connection, Size: 8
GTIN (EAN)	4032248739424
Qty.	1 pc(s).

**HDC insert
HDC S4/8 FS**

Weidmüller Interface GmbH & Co. KG
 Klingenbergstraße 16
 D-32758 Detmold
 Germany
 Fon: +49 5231 14-0
 Fax: +49 5231 14-292083
 www.weidmueller.com

Technical data**Dimensions and weights**

Length	111 mm	Width	34 mm
Height	46.2 mm	Net weight	142 g

Dimensions

Height of socket	46.2 mm	Total length base	111 mm
------------------	---------	-------------------	--------

General data

Size	8	Series	MixMate
Rated voltage (DIN EN 61984)	400 V	Rated voltage according to UL/CSA	600 V AC/DC
Rated impulse voltage (DIN EN 61984)	6 kV	Rated current (DIN EN 61984)	80 A
UL 94 flammability rating	V-0	Insulating material group	IIIa
Insulation resistance	10 ¹⁰ Ω	Insulating material	PC glass-fibre reinforced (UL-listed and railway-certified)
No. of poles	12	Plugging cycles, silver	≥ 500
Pollution severity	3	Type	Female

Connection data PE

Stripping length PE connection	13 mm	Wire connection cross-section, finely stranded, min.	0.5 mm ²
Wire connection cross section, finely stranded, max.	16 mm ²	Cross-section for connected conductor, finely stranded with wire-end ferrules and plastic collars DIN 46228/4, rated connection, min.	0.5 mm ²
Wire connection cross-section, finely stranded with wire-end ferrules and plastic collars DIN 46228/4, rated connection, max.	16 mm ²	Wire connection cross section AWG, min.	AWG 16
Wire connection cross section AWG, max.	AWG 6	Wire cross-section, solid, min.	0.5 mm ²
Wire cross-section, solid, max.	16 mm ²	Connection type PE	Screw connection
Tightening torque, min. PE connection	2 Nm	Tightening torque, max. PE connection	2.5 Nm
Rated cross-section	16 mm ²	Fixing screw	M 5
Blade size, crosshead	Gr. PH2	Blade size, slotted (PE connection)	SD 1.2 x 6.5

Rating data

Rated current (DIN EN 61984)	80 A	Rated impulse voltage (DIN EN 61984)	6 kV
Rated voltage (DIN EN 61984)	400 V	Rated voltage according to UL/CSA	600 V AC/DC

Version

Wire connection cross section AWG, min.	AWG 16	Wire connection cross section AWG, max.	AWG 6
Stripping length, rated connection	15 mm	Type of connection	Screw connection
Min. torque for main contact	1.2 Nm	Max. torque for main contact	3 Nm
Size	8	Volume resistance	≤ 1 mΩ
Clamping screw	M 6	Blade size, slotted (screw connection)	SD 0.8 x 4.0
Surface finish	Silver passivated	Material	Copper alloy

**HDC insert
HDC S4/8 FS**

Weidmüller Interface GmbH & Co. KG
 Klingenbergstraße 16
 D-32758 Detmold
 Germany
 Fon: +49 5231 14-0
 Fax: +49 5231 14-292083
 www.weidmueller.com

Technical data

Classifications

ETIM 3.0	EC002413	UNSPSC	30-21-18-01
eClass 6.2	27-26-12-90	eClass 7.1	27-44-02-90

Product information

Descriptive text ordering data	The signal contacts are designed for a rated voltage of 400V and a rated current of 16A.
Descriptive text accessories	Accessories, see chapter J - Tools, see chapter K

Approvals

Approvals



ROHS	Conform
------	---------

Data sheet...

**HDC insert
HDC S4/8 FS**

Weidmüller Interface GmbH & Co. KG
Klingenbergstraße 16
D-32758 Detmold
Germany
Fon: +49 5231 14-0
Fax: +49 5231 14-292083
www.weidmueller.com

Drawings

