



Chipsmall Limited consists of a professional team with an average of over 10 year of expertise in the distribution of electronic components. Based in Hongkong, we have already established firm and mutual-benefit business relationships with customers from,Europe,America and south Asia,supplying obsolete and hard-to-find components to meet their specific needs.

With the principle of “Quality Parts,Customers Priority,Honest Operation,and Considerate Service”,our business mainly focus on the distribution of electronic components. Line cards we deal with include Microchip,ALPS,ROHM,Xilinx,Pulse,ON,Everlight and Freescale. Main products comprise IC,Modules,Potentiometer,IC Socket,Relay,Connector.Our parts cover such applications as commercial,industrial, and automotives areas.

We are looking forward to setting up business relationship with you and hope to provide you with the best service and solution. Let us make a better world for our industry!



Contact us

Tel: +86-755-8981 8866 Fax: +86-755-8427 6832

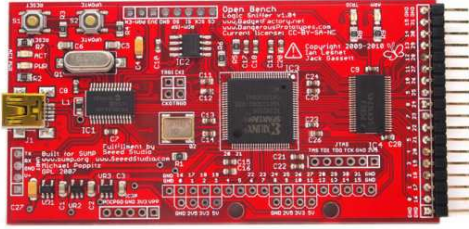
Email & Skype: info@chipsmall.com Web: www.chipsmall.com

Address: A1208, Overseas Decoration Building, #122 Zhenhua RD., Futian, Shenzhen, China



Open Workbench Logic Sniffer

SKU: 102990044



Description

The Open Workbench Logic Sniffer is an open source logic analyzer with a USB interface. The hardware is designed for the SUMP open source logic analyzer (<http://www.sump.org/projects/analyzer/>) client and toolchain. This project is a collaboration between the Gadget Factory (<http://www.gadgetfactory.net/gf/project/butterflylogic/>) and Dangerous Prototypes (<http://dangerousprototypes.com/open-logic-sniffer>).

Features

- Capture 50MHz+ waveforms on 32 channels
 - 200Msps captures up to 100MHz waveforms on 16 channels
 - 100Msps captures up to 50MHz waveforms on 32 channels
- 16 buffered channels, 5volt tolerant
 - M74LCX16245DTR2G (<http://www.onsemi.com/PowerSolutions/product.do?id=MC74LCX16245>) transceiver tolerates voltages from -0.5V to +7V.
- 216K Block RAM supports following memory configurations*
 - 8 channels with 24K sample depth
 - 16 channels with 12K sample depth
 - 32 channels with 6K sample depth
- External clock and trigger input

- Allows interfacing with external test equipment and daisy chaining OLS's for additional channels.
- Internal clock and trigger output
- 16bit wing expansion header
- USB interface, USB powered
- USB upgradable everything
- Designed for the SUMP logic analyzer client (<http://www.sump.org/projects/analyzer/>)
- Open source
- Low price

Memory depth is the maximum supported by the hardware, the current firmware implements the following memory depths:

- 8 channels with 16K sample depth
- 16 channels with 8K sample depth
- 32 channels with 4K sample depth

Future firmware upgrades will support the maximum memory configurations.

Support

- Latest project downloads, project page (<http://www.gadgetfactory.net/gf/project/butterflylogic/>)
- Design overview and links (http://dangerousprototypes.com/docs/Open_Bench_Logic_Sniffer)
- Issue tracker (<http://www.gadgetfactory.net/gf/project/butterflylogic/tracker/>)
- Forum (<http://whereisian.com/forum/index.php?board=23.0>)



(http://www.seeedstudio.com/depot/logic-sniffer-probe-cable-p-619.html?cPath=61_68)

Logic sniffer Probe Cable

Note: The cable is not included, please purchase if you need one.

This open source hardware and software is distributed in the hope that it will be useful, but WITHOUT ANY WARRANTY; without even the implied warranty of MERCHANTABILITY or FITNESS FOR A PARTICULAR PURPOSE. If you can't accept this risk (<http://wherelabs.com/tos.html>), please do not buy this hardware.

If you encounter any problems when using this product, here is the forum (<http://dangerousprototypes.com/forum/index.php>) from which you can get the technical support.