



Chipsmall Limited consists of a professional team with an average of over 10 year of expertise in the distribution of electronic components. Based in Hongkong, we have already established firm and mutual-benefit business relationships with customers from,Europe,America and south Asia,supplying obsolete and hard-to-find components to meet their specific needs.

With the principle of “Quality Parts,Customers Priority,Honest Operation,and Considerate Service”,our business mainly focus on the distribution of electronic components. Line cards we deal with include Microchip,ALPS,ROHM,Xilinx,Pulse,ON,Everlight and Freescale. Main products comprise IC,Modules,Potentiometer,IC Socket,Relay,Connector.Our parts cover such applications as commercial,industrial, and automotives areas.

We are looking forward to setting up business relationship with you and hope to provide you with the best service and solution. Let us make a better world for our industry!



## Contact us

Tel: +86-755-8981 8866 Fax: +86-755-8427 6832

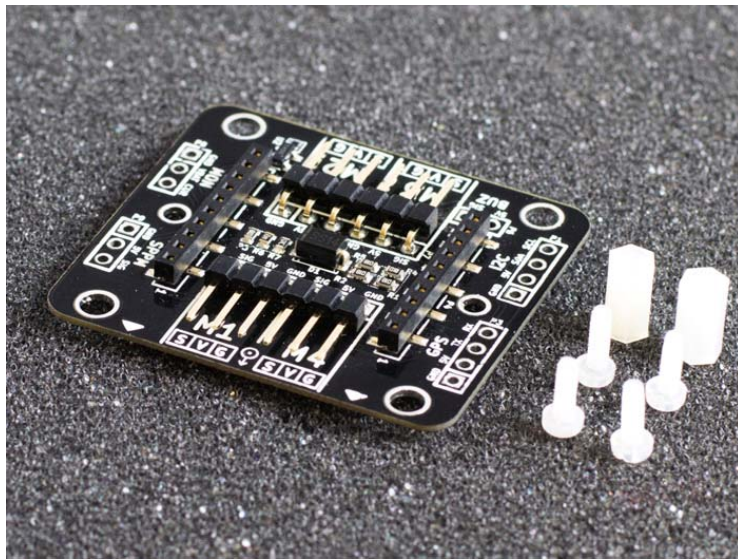
Email & Skype: info@chipsmall.com Web: www.chipsmall.com

Address: A1208, Overseas Decoration Building, #122 Zhenhua RD., Futian, Shenzhen, China



# Crazyflie 2.0 - BigQuad Deck

SKU 102990227



## Description

With the BigQuad deck you can transform your Crazyflie 2.0 to a bigger quad by connecting external ESCs (Electronic Speed Controller) to the breakout connectors on the deck. The autodetection of the deck makes this transformation possible to do in seconds. The deck contains breakout header connectors for additional accessories such as external receiver (CPPM input) and GPS. It also has the possibility to monitor battery voltage and current.

This product is intended to be used together with the Crazyflie 2.0 quadcopter and uses its expansion board system. Please have a look at the buyers guide for more info about the Crazyflie 2.0 ecosystem. For more information about how to use the expansion decks check out the getting started with expansion deckspage.

## FEATURES

- • 4 x ESC connectors
- • 0.1" header mounting holes for additional connectivity:
  - • CPPM input (3 pin)
  - • GPS input (4 pin)
  - • I2C expansion (4 pin)
  - • Battery and current monitoring input (3 pin)
  - • Buzzer output (2 pin)
- • Connect one or two additional decks
- • Automatic detection of expansion deck

## ELECTRICAL SPECIFICATION

- • Power Crazyflie 2.0 with 4.5V - 5.5V from ESC.
- • BiqQuad deck inputs are 5V tolerant.
- • Battery voltage monitoring divider scaled for input up to 23V.
- • Current monitoring input 0V - 3V.
- • BiqQuad deck and Crazyflie 2.0 current consumption:
  - • ~120mA without any additional decks.
  - • Up to 500mA if Crazyflie 2.0 battery is connected and charging.
- • 1-wire memory for automatic expansion deck detection.

## MECHANICAL SPECIFICATION

- • Weight: 3.8g
- • Size (WxHxD): 36x40x5mm
- • M3 mounting holes placed 30.5mm square.
- • Designed for mounting above or under the Crazyflie 2.0



## **PART LIST**

- • 1x BigQuad deck
- • 4x M2x4 nylon screw
- • 2x M2x6 hex spacer

- **SUPPORT**

- If you have any further question for technical support, please contact [support@bitcraze.se](mailto:support@bitcraze.se).