



Chipsmall Limited consists of a professional team with an average of over 10 year of expertise in the distribution of electronic components. Based in Hongkong, we have already established firm and mutual-benefit business relationships with customers from,Europe,America and south Asia,supplying obsolete and hard-to-find components to meet their specific needs.

With the principle of “Quality Parts,Customers Priority,Honest Operation,and Considerate Service”,our business mainly focus on the distribution of electronic components. Line cards we deal with include Microchip,ALPS,ROHM,Xilinx,Pulse,ON,Everlight and Freescale. Main products comprise IC,Modules,Potentiometer,IC Socket,Relay,Connector.Our parts cover such applications as commercial,industrial, and automotives areas.

We are looking forward to setting up business relationship with you and hope to provide you with the best service and solution. Let us make a better world for our industry!



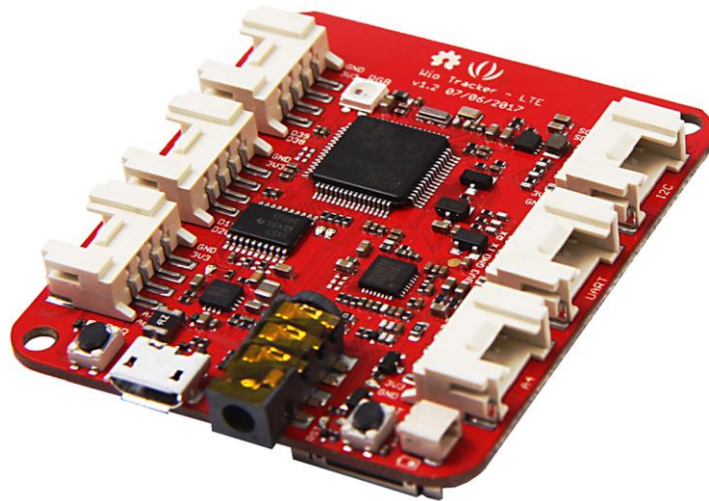
## Contact us

Tel: +86-755-8981 8866 Fax: +86-755-8427 6832

Email & Skype: info@chipsmall.com Web: www.chipsmall.com

Address: A1208, Overseas Decoration Building, #122 Zhenhua RD., Futian, Shenzhen, China





## Wio LTE JP Version - 4G, Cat.1, Espruino Compatible

SKU 102990925

### Description

While most of smart phones are using LTE network now, how about giving LTE capability to your IoT project with the latest released Wio LTE board. The Wio LTE is an Arduino and Grove compatible development board with also the ability of accessing LTE network. The LTE network provides a wide bandwidth which allows much faster interaction between user and device. The Arduino and Grove compatibility allows for quicker development through numerous libraries and a supportive community. In addition to C/C++, the Wio LTE also support programming in Espruino, a simplified JavaScript language that lower the entrance difficulty in play with the board.

### Note

- The suggest power supply for Wio LTE products is 5V/2A; The board may not be able to power up when the current is below 1A.
- Please always plug a 3.7V Lipo battery in case USB power supply is not sufficient.
- When the signal is not good, there will be noise while calling.
- We have developed 4 different versions of Wio LTE for different regions. This is the Wio LTE JP version, except this version, the others also support GNSS, below table shows the difference between each version. For more detail information, please refer to the manual.

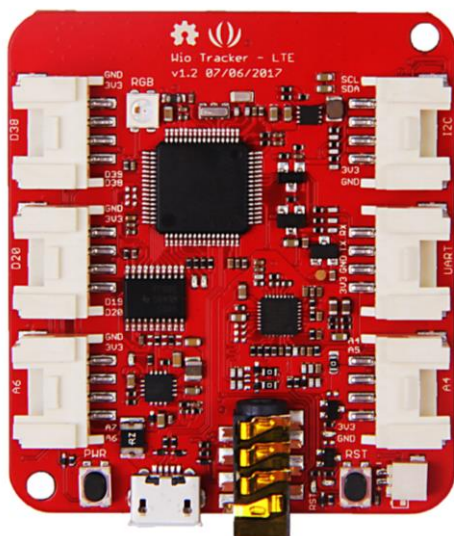
Versions	LTE Bands	3G Bands	GSM	GNSS
US	FDD: B2/B4/B12	WCDMA: B2/B4/B5	/	GPS/GLONASS/Beidou/Compass /Galileo/GZSS
EU	FDD: B1/B3/B5/B7/B8/B20	WCDMA: B1/B5/B8	900/1800	GPS/GLONASS/Beidou/Compass /Galileo/GZSS
AU	FDD: B1/B2/B3/B4/B5/B7/B8/B28	WCDMA: B1/B2/B5/B8	850/900/1800/1900	GPS/GLONASS/Beidou/Compass /Galileo/GZSS
JP	FDD: B1/B3/B8/B18/B19/B26	/	/	/

## Technical Details

Weight	G.W 18g
Battery	Exclude

## Part List

Wio LTE JP Version- 4G, Cat.1, Espruino Compatible	1
--	---



Sub-System	Function	Detail
Microcontroller	Processor	STM32F405RG, ARM Cortex-M4, CPU running up to 168MHZ
	Flash	1MB
	RAM	192+4KB
	Operating Voltage	3.3V
	Low Power	Sleep, Stop, Standby modes
	DC Current per I/O Pin	7 mA
LTE	LTE Cat.1	FDD: B1/B3/B8/B18/B19/B26
		AT Command: 3GPP TS27.007 and enhanced AT Commands
	Data	LTE-FDD Max 10Mbps(DL) Max 5Mbps (UL) Protocol: TCP/UDP/PPP/FTP/HTTP/SSL
	SMS	Peer to Peer Message, SMS broadcast, Text and PDU mode
	Audio	Echo cancellation; Noise elimination
Peripheral	Grove	2 x Grove Digital Port
		2 x Analog Port
		1 x UART
		1 x I2C
	Antenna	2 x LTE Antenna
	Others	USB: Power supply and upload program
		JST 1.0 connector for battery
		3.5mm Audio Jack
		MCU Reset Button, EC21 Power Button
		1 x User RGB LED SK6812
Nano SIM and TF card 2 in 1 socket		