



Chipsmall Limited consists of a professional team with an average of over 10 year of expertise in the distribution of electronic components. Based in Hongkong, we have already established firm and mutual-benefit business relationships with customers from,Europe,America and south Asia,supplying obsolete and hard-to-find components to meet their specific needs.

With the principle of “Quality Parts,Customers Priority,Honest Operation,and Considerate Service”,our business mainly focus on the distribution of electronic components. Line cards we deal with include Microchip,ALPS,ROHM,Xilinx,Pulse,ON,Everlight and Freescale. Main products comprise IC,Modules,Potentiometer,IC Socket,Relay,Connector.Our parts cover such applications as commercial,industrial, and automotives areas.

We are looking forward to setting up business relationship with you and hope to provide you with the best service and solution. Let us make a better world for our industry!



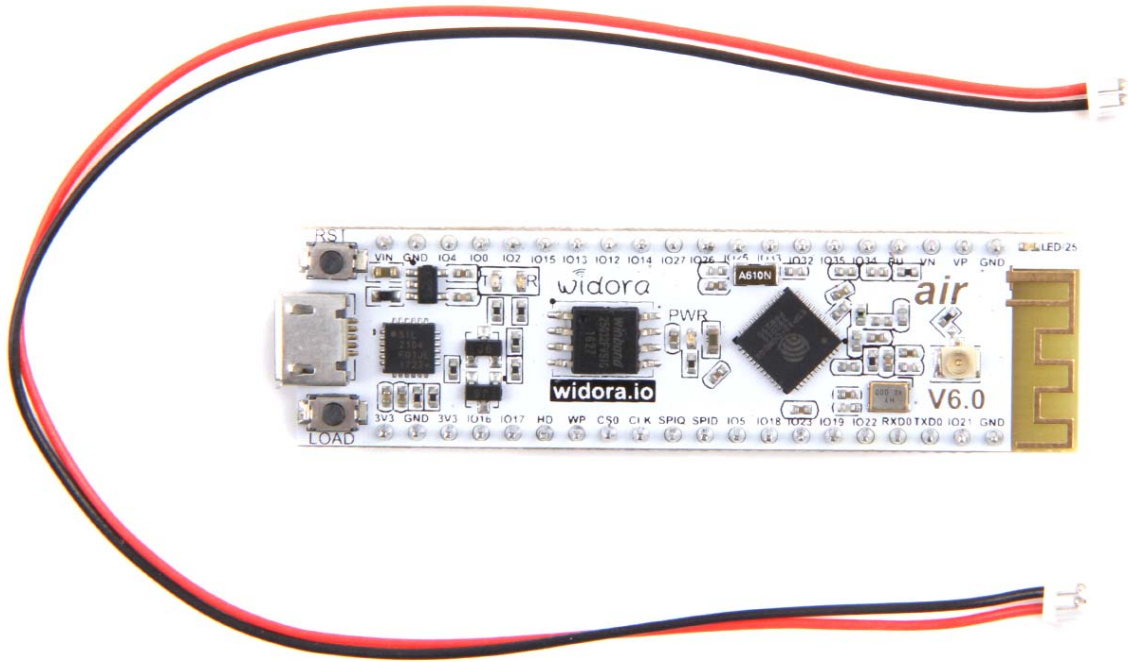
Contact us

Tel: +86-755-8981 8866 Fax: +86-755-8427 6832

Email & Skype: info@chipsmall.com Web: www.chipsmall.com

Address: A1208, Overseas Decoration Building, #122 Zhenhua RD., Futian, Shenzhen, China





Widora AIR Based ESP32 Development Board

SKU 102990963

Description

AIR hardware platform based on ESP32 microcontroller, onboard 4MByte FLASH and peripheral circuits, will also be integrated WI-FI / BT antenna, AIR also comes with a USB-TTL debugger circuit that makes it easy for users to download the watch code to run. The AIR size is only 2440mil*700mil with so many peripherals.

Features

- Microcontroller: ESP32-D0WDQ6(Tensilica 32-bit LX6)
- Clock Frequency: up to 240MHz
- Performance: up to 600DMIPS
- Wi-Fi: 802.11 b/g/n/e/i (802.11n @ 2.4 GHz up to 150 Mbit/s)
- Bluetooth: V4.2 BR/EDR and Bluetooth Low Energy
- Security: AES,SHA2,RSA-4096
- SRAM: 520KiB
- External FLASH: 4MiB
- 32 I/O pins with several builtin peripherals
- Console: CP2104 USB to UART bridge chip
- Size: 2440mil x 700mil
- Operating temperature: -40 ~ +85 Degrees celsius

Applications

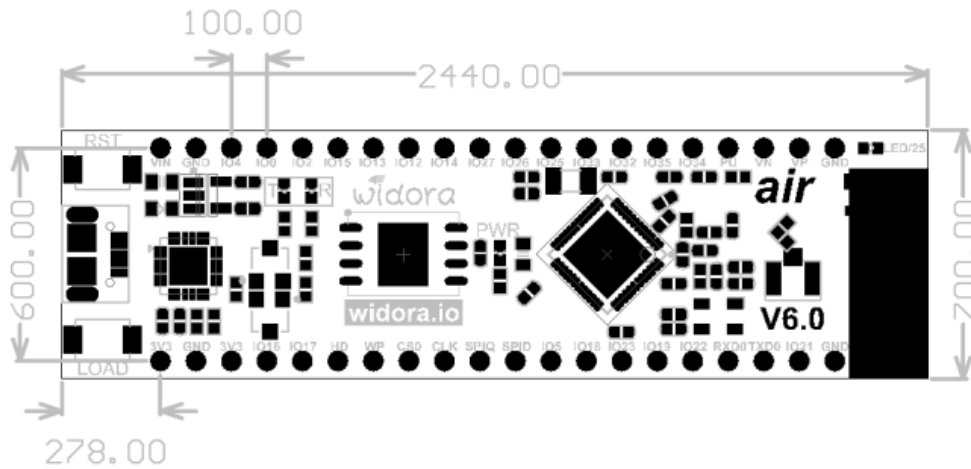
- Home and building automation
- Wireless alarm and security system
- Industrial monitoring
- Audio codec and playback

Technical Details

Dimensions	73.2mm x 21mm x 3mm
Weight	G.W 20g
Battery	Exclude
Power	
Power	2.8V - 3.6V
USB	5V
Battery	3.6V-4.2V
Current	225mA(max)

Part List

Widora AIR Based ESP32 Development Board	1
--	---



Pins photo

TOP ROW



BOTTOM ROW



Pins description

Top Row	Des	Functions	Bottom Row	Des	Functions
1	VIN	Power in	1	3V3	3V3 Power out
2	GND	GND	2	GND	GND
3	IO4	GPIO4	3	3V3	3V3 Power out
4	IO0	GPIO0(1)	4	IO16	GPIO16
5	IO2	GPIO2	5	IO17	GPIO17
6	IO15	GPIO15/MTDO	6	HD	FLASH Hold
7	IO13	GPIO13/MTCK	7	WP	FLASH Write protect
8	IO12	GPIO12/MTDI	8	CS0	FLASH CS0
9	IO14	GPIO14/MTMS	9	CLK	FLASH CLK
10	IO27	GPIO27	10	SPIQ	FLASH DOUT
11	IO26	GPIO26	11	SPID	FLASH DIN
12	IO25	GPIO25	12	IO5	GPIO5
13	IO33	GPIO33	13	IO18	GPIO18
14	IO32	GPIO32	14	IO23	GPIO23
15	IO35	GPIO35	15	IO19	GPIO19
16	IO34	GPIO34	16	IO22	GPIO22
17	PU	High:ON,Low:OF F	17	RXD0	GPIO3/RXD0
18	VN	GPIO38/SensVN	18	TXD0	GPIO1/TXD0
19	VP	GPIO36/SensVP	19	IO21	GPIO21
20	GND	GND	20	GND	GND

